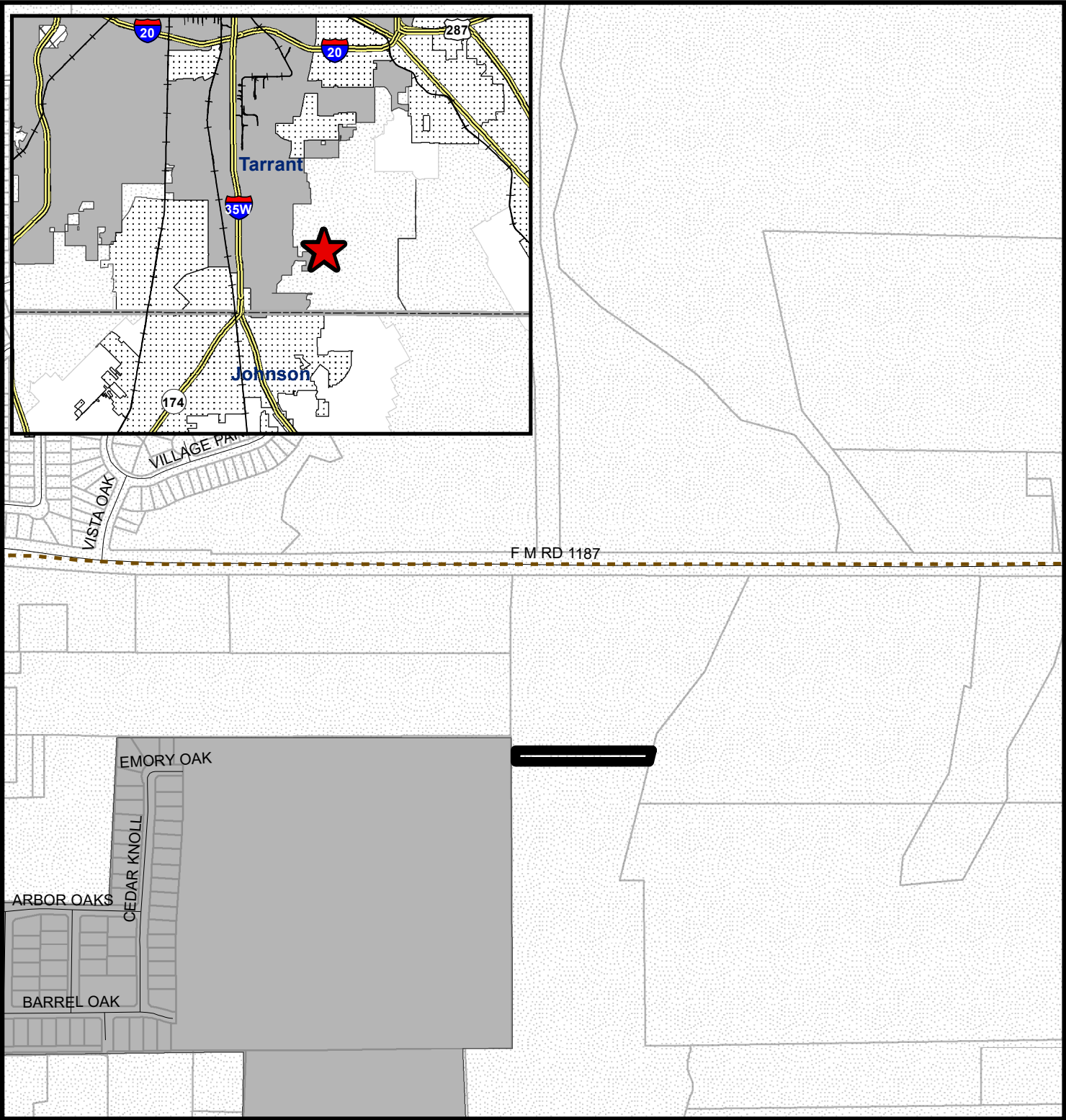


Annexation - HLS Property

Exhibit A

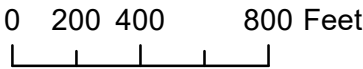
Addition of approximately 0.673 Acres to become part of Council District 6



Fort Worth
DESIGNATION

- Full Purpose
- Limited Purpose
- Extraterritorial Jurisdiction

- Adjacent Cities
- County Boundaries
- Annexation Area



1:7,200



Planning & Development Department
02/14/2022

COPYRIGHT 2022 CITY OF FORT WORTH UNAUTHORIZED REPRODUCTION IS A VIOLATION OF APPLICABLE LAWS. THIS DATA IS TO BE USED FOR A GRAPHICAL REPRESENTATION ONLY. THE ACCURACY IS NOT TO BE TAKEN / USED AS DATA PRODUCED FOR ENGINEERING PURPOSES OR BY A REGISTERED PROFESSIONAL LAND SURVEYOR. THE CITY OF FORT WORTH ASSUMES NO RESPONSIBILITY FOR THE ACCURACY OF SAID DATA.