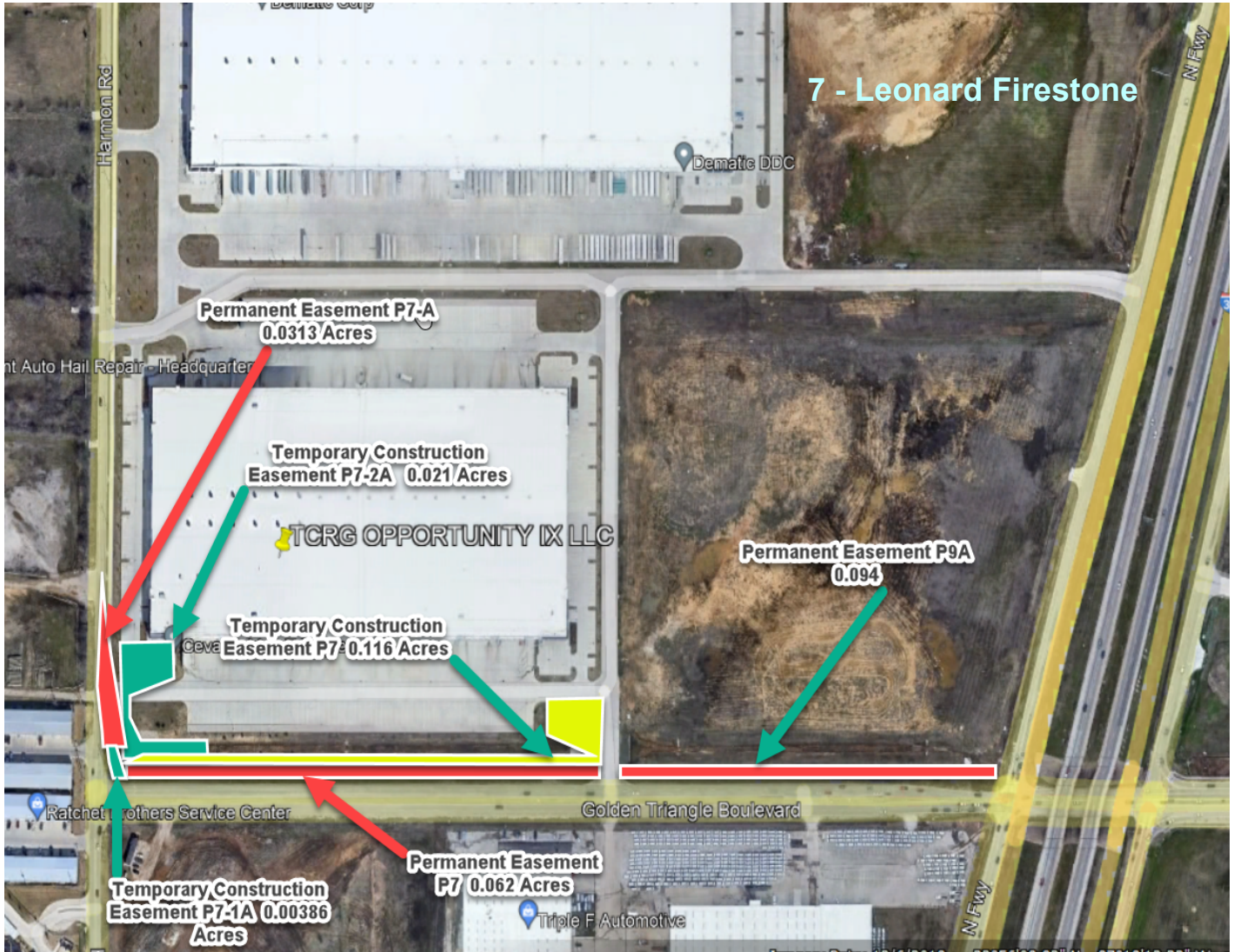


# 021CPN 101013 P7 & P9A TCRG ACQUISITION MAP

## GOLDEN TRIANGLE BLVD PROJECT

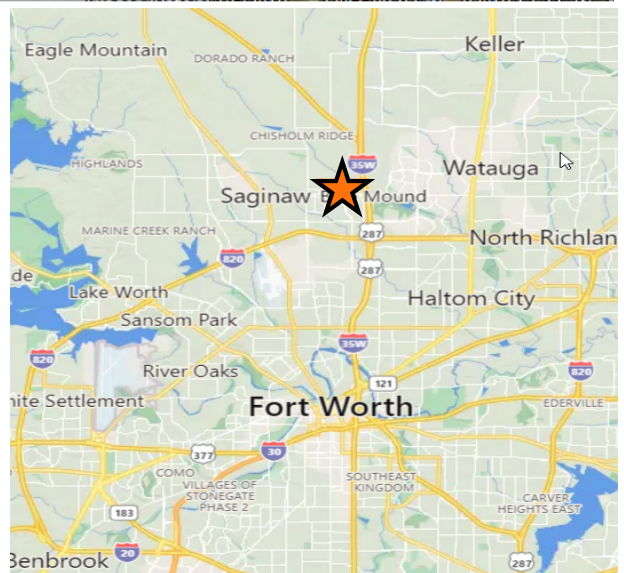
### CITY PROJECT No. 101013 - COUNCIL DISTRICT 7



\*LOCATION OF BOUNDARY IS APPROXIMATE.

- ROW = Right-of-Way Easement
- TCE = Temporary Construction Easement
- Parcel 7 ROW = 0.062 Acres
- Parcel 7-A ROW = 0.0313 Acres
- Parcel 7 TCE = 0.116 Acres
- Parcel 7-1A TCE = 0.00386 Acres
- Parcel 7-2A TCE = 0.021 Acres
- Parcel 9A ROW = 0.094 Acres

★ = Project Site



Copyright 2017 City of Fort Worth. Unauthorized reproduction is a violation of applicable laws. This product is for informational purposes and may not have been prepared for or be suitable for legal, engineering, or surveying purposes. It does not represent an on-the-ground survey and represents only the approximate relative location of property boundaries. The City of Fort Worth assumes no responsibility for the accuracy of said data.

