



TARRANT COUNTY

GARY FICKES

**COUNTY COMMISSIONER
PRECINCT NO. 3**

Northeast Courthouse
645 Grapevine Hwy., Suite 200
Hurst, TX 76054
(817) 248-6295
(817) 581-3603 - Fax

Southlake Town Hall
1400 Main Street, Suite 410
Southlake, TX 76092
(817) 481-8234
(817) 481-8053 - Fax

January 30, 2024

Dana Burghdoff, Assistant City Manager
City of Fort Worth
200 Texas Street
Fort Worth, TX 76102

Re: Haslet Roanoke Road

Ms. Burghdoff,

On January 26, 2024, our Transportation Services Department received an inquiry from the City of Fort Worth related to the potential annexation of Haslet Roanoke Road. It is my understanding that the city desires to annex the entire right-of-way of Haslet Roanoke Road as depicted on the attached map and that, once annexed, the city will assume full maintenance responsibilities.

This letter serves to inform the City of Fort Worth that Tarrant County Commissioner, Precinct 3, has no objection to the annexation of the full right-of-way of Haslet Roanoke Road as described.

Thank you,

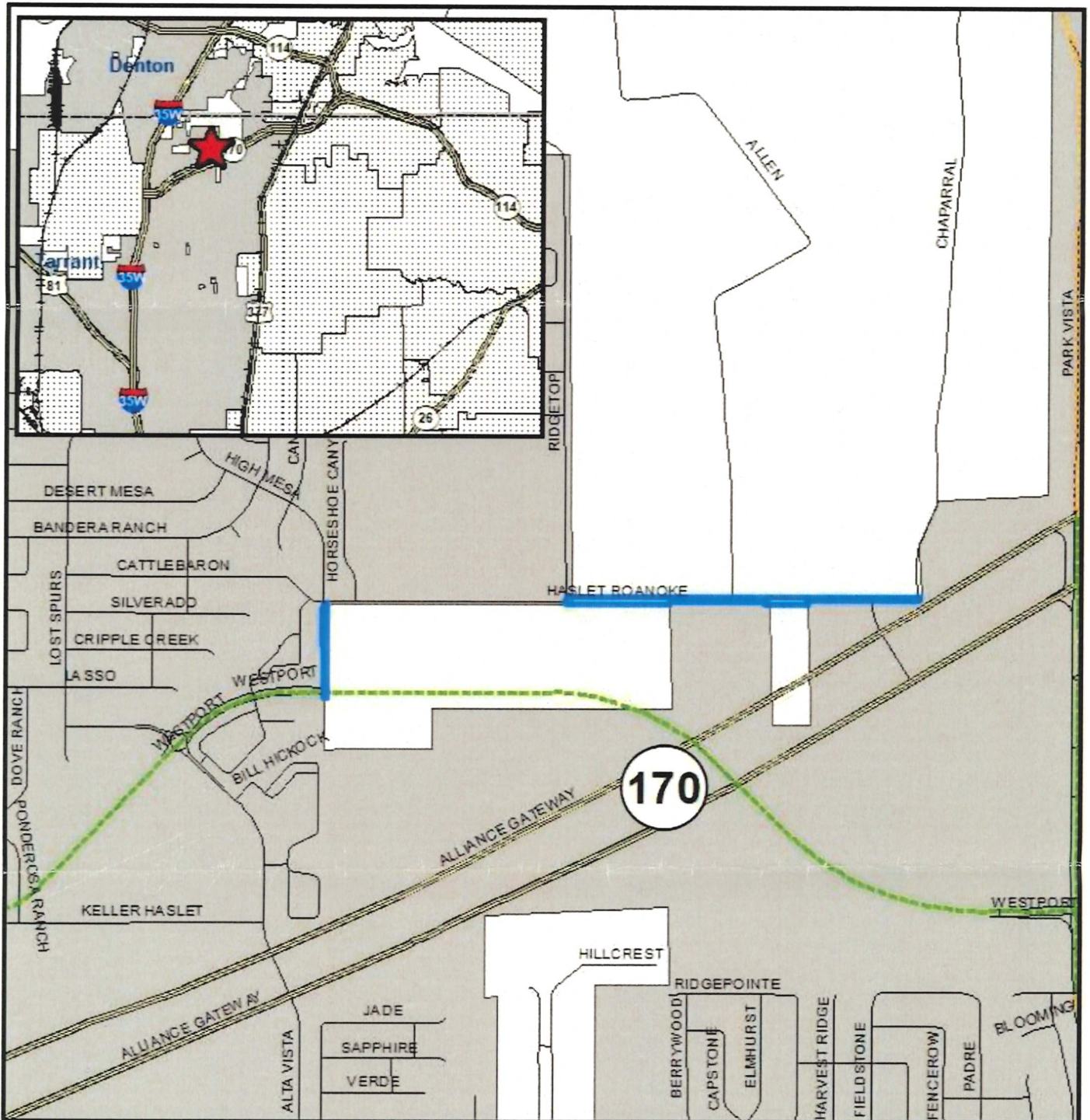
Gary Fickes
Tarrant County Commissioner, Precinct 3

Enclosure: Haslet Roanoke Road Annexation Map

cc: Randy Skinner, Director, Transportation Services

Annexation - Haslet Roanoke

Exhibit A



Fort Worth

DESIGNATION

- Full Purpose
- Limited Purpose
- Extraterritorial Jurisdiction
- Adjacent Cities
- County Boundaries
- Annexation Area

0 250 500 1,000 Feet

1:14,400



Planning & Development Department
01/25/2024

COPYRIGHT 2023 CITY OF FORT WORTH UNAUTHORIZED REPRODUCTION IS A VIOLATION OF APPLICABLE LAWS. THIS DATA IS TO BE USED FOR A GRAPHICAL REPRESENTATION ONLY. THE ACCURACY IS NOT TO BE TAKEN / USED AS DATA PRODUCED FOR ENGINEERING PURPOSES OR BY A REGISTERED PROFESSIONAL LAND SURVEYOR. THE CITY OF FORT WORTH ASSUMES NO RESPONSIBILITY FOR THE ACCURACY OF SAID DATA.