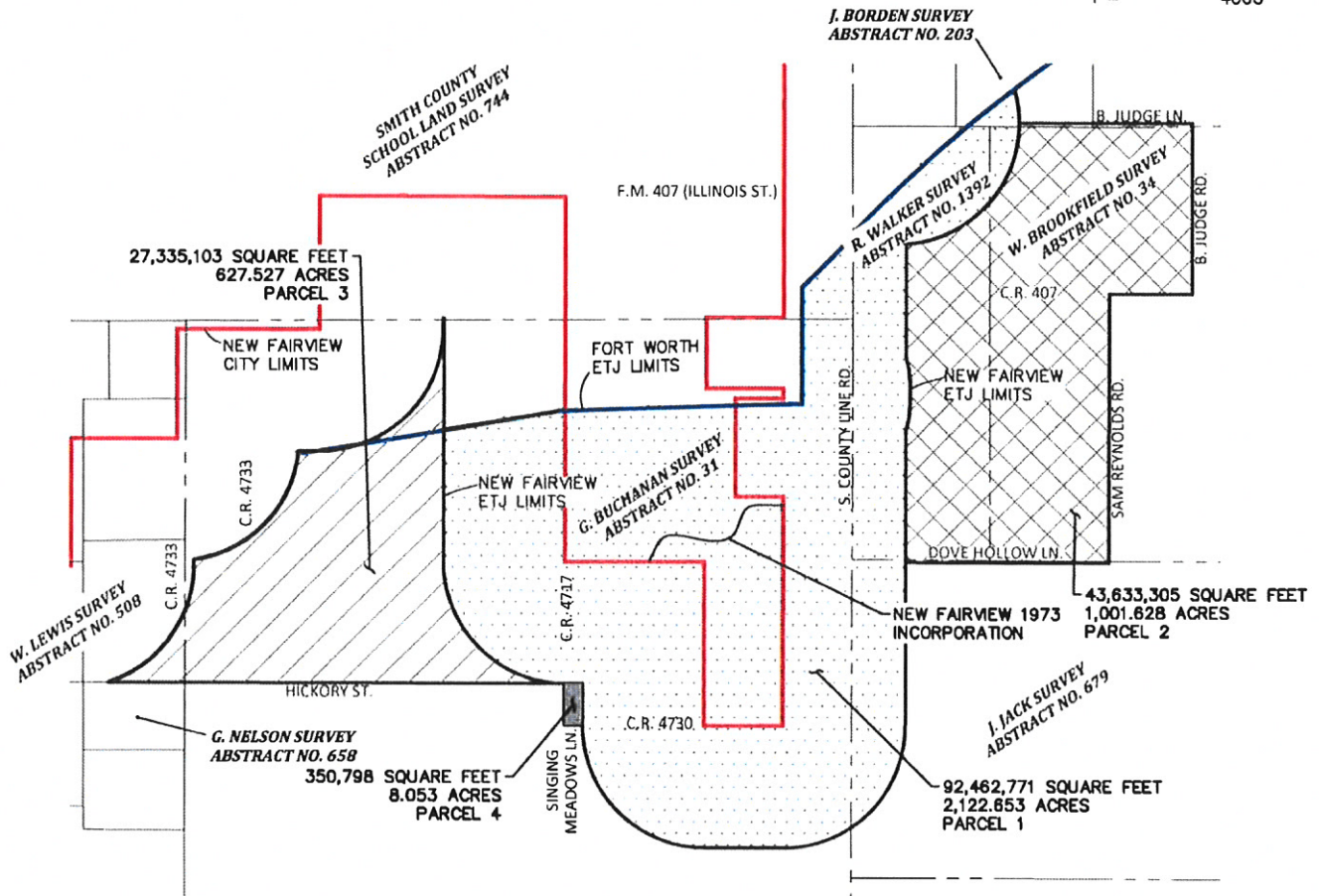
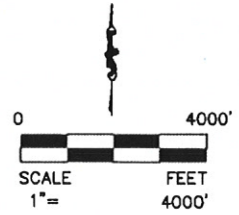


**EXHIBIT A**  
**CITY OF NEW FAIRVIEW CITY LIMITS AND CITY OF FORT WORTH EXTRATERRITORIAL JURISDICTION**

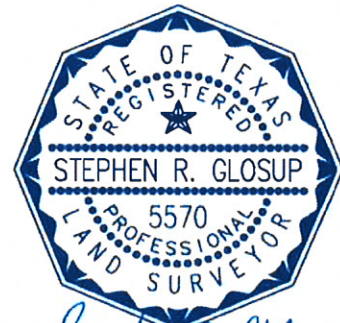


— = NEW FAIRVIEW CITY LIMITS  
 — = FORT WORTH ETJ LIMITS

- = PARCEL 1 (EXHIBIT A) CITY OF FORT WORTH ETJ RELEASE
- = PARCEL 2 (EXHIBIT B) CITY OF FORT WORTH ETJ RELEASE
- = PARCEL 3 (EXHIBIT C) CITY OF FORT WORTH ETJ RELEASE
- = PARCEL 4 (EXHIBIT D) CITY OF FORT WORTH ETJ RELEASE

C.C.D. NO. = COUNTY CLERK'S DOCUMENT NUMBER  
 D.R.T.C.T. = DEED RECORDS, TARRANT COUNTY, TEXAS  
 P.R.T.C.T. = PLAT RECORDS, TARRANT COUNTY, TEXAS

A metes and bounds description of even date accompanies this drawing.



*Stephen R. Glosup*  
 8/9/19



550 Bailey Avenue • Suite 400 • Fort Worth, Texas 76107  
 Tel: 817.335.1121  
 FIRM REGISTRATION 10098100

PLOTTED BY: Lee Flanegin ON: Thursday, August 08, 2019 AT: 4:30 PM. FILEPATH: G:\Production\500\002238\001\Survey\Drawings\B002238.001\Deed Sketch1.dwg