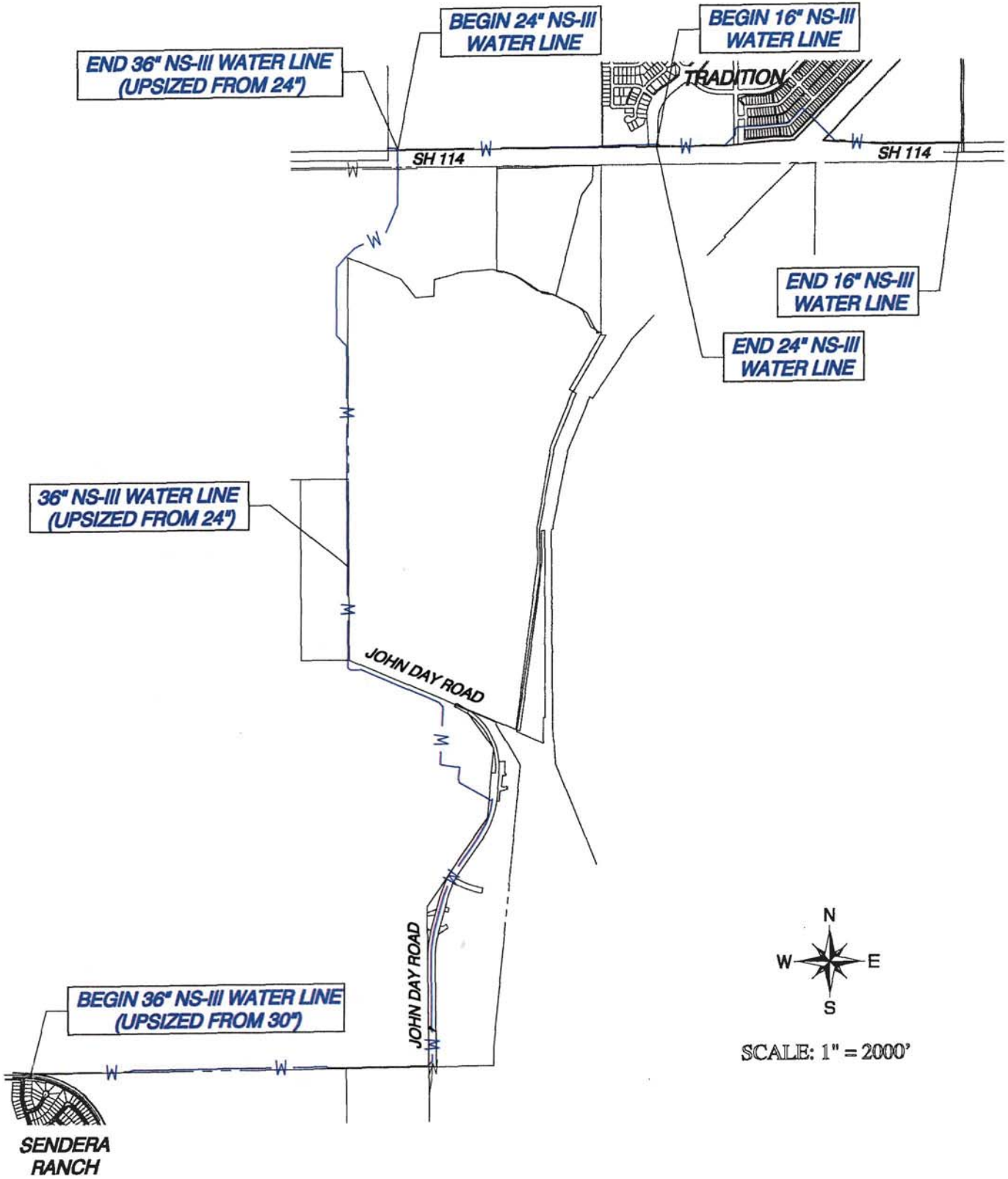


NS-III WATER LINE EXHIBIT



E:\10720 - Tradition\Plans\Phase - Major Infrastructure\Offsite Water Line NS-III.kj Upsize.pro 7 Nov 2019

PREPARED FOR:

HINES INTERESTS, LP

2200 ROSS AVENUE, SUITE 4200W
DALLAS, TX 75201
(972) 716-2903

PREPARED BY:

GOODWIN & MARSHALL

CIVIL ENGINEERS - PLANNERS - SURVEYORS
2405 Mustang Drive, Grapevine, Texas 76051
Metro (817) 329-4373

NOVEMBER 2019