

EXHIBIT "A"
METES AND BOUNDS DESCRIPTION
RIGHT-OF-WAY ABANDONMENT

BEING A 0.106 ACRE TRACT OF LAND LOCATED IN THE WILLIAM LINN SURVEY, ABSTRACT NO. 924, TARRANT COUNTY, TEXAS, AND BEING A PORTION OF WEST LANE, A VARIABLE WIDTH RIGHT-OF-WAY, SAID 0.106 ACRE TRACT OF LAND BEING MORE PARTICULARLY DESCRIBED BY METES AND BOUNDS AS FOLLOWS;

BEGINNING AT A 1/2 INCH CAPPED IRON ROD FOUND FOR THE NORTHWEST CORNER OF LOT 2, BLOCK 1, HOLLAND ADDITION, AN ADDITION TO THE CITY OF FORT WORTH, TARRANT COUNTY, TEXAS, ACCORDING TO THE PLAT RECORDED IN VOLUME 388-149, PAGE 53, PLAT RECORDS, TARRANT COUNTY, TEXAS (PRTCT), SAID BEGINNING POINT HAVING A NAD83 – TEXAS COORDINATE SYSTEM POSITION (GRID) OF N:6963321.8 E:2372379.0 (BEARINGS & COORDINATE VALUES SHOWN HEREON ARE IN REFERENCE TO THE NAD83 - TEXAS COORDINATE SYSTEM - NORTH CENTRAL ZONE, 4202, BASED ON OBSERVATIONS UTILIZING THE LEICA GPS REFERENCE NETWORK. ALL DISTANCES SHOWN HEREON WERE ADJUSTED TO SURFACE USING A COMBINED SCALE FACTOR OF 1.00013884974, BASE POINT 0,0,0);


THENCE SOUTH 00 DEGREES 54 MINUTES 22 SECONDS WEST, WITH THE WEST LINE OF THE SAID BLOCK 1, BEING COMMON WITH THE EAST RIGHT-OF-WAY LINE OF WEST LANE, A DISTANCE OF 200.48 FEET TO A 1/2 INCH IRON ROD FOUND FOR THE SOUTHWEST CORNER OF LOT 3, SAID BLOCK 1;

THENCE NORTH 81 DEGREES 57 MINUTES 39 SECONDS WEST, WITH A COMMON LINE BETWEEN SAID WEST LANE, AND A CALLED 23.246 ACRE TRACT OF LAND AS DESCRIBED IN THE SPECIAL WARRANTY DEED TO UPLIFT EDUCATION, FILED FOR RECORD IN COUNTY CLERK'S INSTRUMENT NO. D219140702, OFFICIAL PUBLIC RECORDS, TARRANT COUNTY, TEXAS (OPRTCT), A DISTANCE OF 20.52 FEET TO A 1/2 INCH IRON ROD FOUND FOR CORNER;

THENCE NORTH 00 DEGREE 41 MINUTES 31 SECONDS WEST, WITH AN EAST LINE OF THE SAID CALLED 23.246 ACRE TRACT OF LAND, A DISTANCE OF 198.13 FEET, TO A POINT FOR CORNER, FROM WHICH A 1/2 INCH IRON ROD FOUND BEARS NORTH 00 DEGREES 41 MINUTES 31 SECONDS WEST, A DISTANCE OF 105.72 FEET;

THENCE SOUTH 88 DEGREES 48 MINUTES 54 SECONDS EAST, OVER AND ACROSS SAID WEST LANE, A DISTANCE OF 25.89 FEET TO THE POINT OF BEGINNING AND CONTAINING 0.106 ACRES (4,604 SQUARE FEET) OF LAND, MORE OR LESS.

SEE ACCOMPANYING EXHIBIT "B" DATED JULY 15, 2019 (PAGE 2 OF 2)



JOSHUA D. WARGO DATE: 07/15/2019
STATE OF TEXAS RPLS NO. 6391

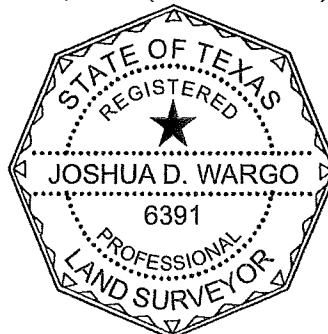


EXHIBIT "B"

RIGHT-OF-WAY ABANDONMENT

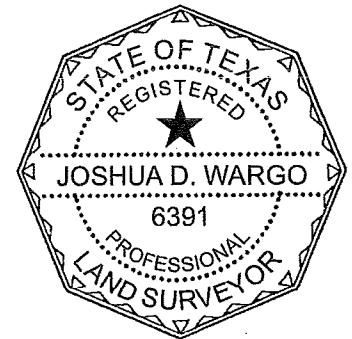
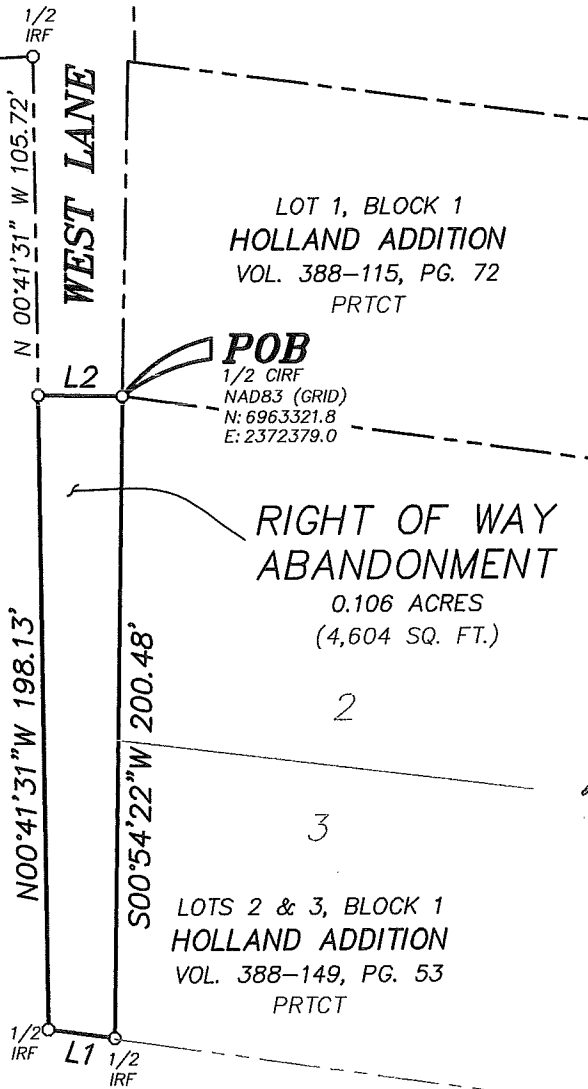
LOCATED IN THE WILLIAM LINN SURVEY,
ABSTRACT NO. 924 IN THE CITY OF
FORT WORTH, TARRANT COUNTY, TEXAS

JOHN T WHITE

LEGEND/ABBREVIATIONS

| | |
|--------|---|
| CIRF | CAPPED IRON ROD FOUND |
| PRTCT | PLAT RECORDS, TARRANT COUNTY, TEXAS |
| VOL. | VOLUME |
| PG. | PAGE |
| POB | POINT OF BEGINNING |
| IRF | IRON ROD FOUND |
| CC# | COUNTY CLERK'S INSTRUMENT NUMBER |
| OPRTCT | OFFICIAL PUBLIC RECORDS, TARRANT COUNTY, TEXAS |

CALLED 23.246 ACRES
UPLIFT EDUCATION
CC# D219140702
OPRTCT



Joshua D. Wargo
JOSHUA D. WARGO
REGISTERED PROFESSIONAL
LAND SURVEYOR NO. 6391
STATE OF TEXAS
JULY 15, 2019

BEARINGS & COORDINATE VALUES SHOWN HEREON
ARE IN REFERENCE TO THE NAD83 - TEXAS
COORDINATE SYSTEM - NORTH CENTRAL ZONE,
4202. ALL DISTANCES SHOWN HEREON WERE
ADJUSTED TO SURFACE USING A COMBINED SCALE
FACTOR OF 1.00013884974, BASE POINT 0,0,0

LINE TABLE

| LINE | BEARING | DISTANCE |
|------|---------------|----------|
| L1 | N 81°57'39" W | 20.52' |
| L2 | S 88°48'54" E | 25.89' |



mma

civil engineering surveying landscape architecture planning

tbpe registration number: f - 2759
tblps registration/license number: 10088000
519 east border
arlington, texas 76010
817-469-1671
fax: 817-274-8757
www.mmataxas.com