

EXHIBIT A
LEGAL DESCRIPTION
TEMPORARY CONSTRUCTION EASEMENT

TCE No.1

Being a portion of Lots 1B, 2B1, 3B1, N½ 6, 10B, 11B, 12B, & 13B, Block 4 of Handley Heights South, an addition of the City of Fort Worth, Tarrant County, Texas, as it appears upon the plat as recorded in Volume 1867, Page 310 of the Plat Records, Tarrant County, Texas (P.R.T.C.T), and being more particularly described as follows:

COMMENCING at a 1/2" iron rod found for the southeast corner of Lot 6, Block 3 Handley Heights South Addition, the southwest corner of Lot 7, Block 3 Handley Heights South Addition as it appears upon the plat as recorded in Volume 388-D, Page 199 of said Plat Records and in the north right of way line of Dowdell Road (a 60 foot right of way), from which a 1/2" iron rod found at the southeast corner of Lot 7, Block 3 Handley Heights South Addition and the southwest corner of Lot 8, Block 3 Handley Heights South Addition and in the north right of way line of Dowdell Road (a 60 foot right of way) bears N 89°28'15" E, a distance of 310.68'.

THENCE S 0°18'49" E departing the common line of Block 3 Handley Heights South Addition and Dowdell Road, a distance of 55.34 feet to a point in the south right of way line of Dowdell Road and in the north line of Lots 8B & 9B, Block 4 Handley Heights South addition as described in the deed as recorded in Volume 9213, Page 1503 (D.R.T.C.T.),

THENCE S 89°41'11" W along the common line of Lots 8B & 9B and the south line of Dowdell Road, a distance of 100.44 feet to the northwest corner of Lots 8B & 9B and Lots 8A & 9A, Block 4 Handley Heights South addition as described in the deed as recorded in Volume 9213, Page 1503 (D.R.T.C.T.) and in the south right of way line of Dowdell Road,

THENCE S 89°27'44" W along the common line of Lots 8A & 9A, Block 4 Handley Heights South Addition and the south line of Dowdell Road, a distance of 209.65 feet to a point for the northwest corner of Lots 8A & 9A and the northeast corner of Lots 1B, 2B1, 3B1, N½ 6, 10B, 11B, 12B, & 13B, Block 4 Handley Heights South Addition

THENCE S 00°18'49" E along the common line of Lots 8A & 9A, and Lots 1B, 2B1, 3B1, N½ 6, 10B, 11B, 12B, & 13B, Block 4 Handley Heights South Addition, a distance of 23.20 feet to the POINT OF BEGINNING,

THENCE S 00°18'49" E along the common line of Lots 8A & 9A, and Lots 1B, 2B1, 3B1, N½ 6, 10B, 11B, 12B, & 13B, Block 4 Handley Heights South Addition, a distance of 84.88 feet to a 5/8" iron rod set with plastic cap stamped "DEOTTE RPLS 4673",

THENCE S 70°09'30" W departing the common line of Lots 8A & 9A, and Lots 1B, 2B1, 3B1, N½ 6, 10B, 11B, 12B, & 13B, Block 4 Handley Heights South Addition, a distance of 314.59 feet to a 5/8" iron rod set with plastic cap stamped "DEOTTE RPLS 4673",

THENCE S 35°54'00" W, a distance of 42.37 feet to a 5/8" iron rod set with plastic cap stamped "DEOTTE RPLS 4673",

THENCE S 07°28'53" W, a distance of 194.62 feet to a point

THENCE N 50°56'43" W, a distance of 64.56 feet to a point

THENCE N 07°28'53" W, a distance of 174.74 feet to a point

THENCE N 35°54'00" E, a distance of 117.66 feet to a point

THENCE N 70°09'30" E, a distance of 323.21 feet to the POINT OF BEGINNING containing 40,070 square feet or 0.920 acres more or less

TCE No.2

Being a portion of Lots 1B, 2B1, 3B1, N½ 6, 10B, 11B, 12B, & 13B, Block 4 of Handley Heights South, an addition of the City of Fort Worth, Tarrant County, Texas, as it appears upon the plat as recorded in Volume 1867, Page 310 of the Plat Records, Tarrant County, Texas (P.R.T.C.T), and being more particularly described as follows:

COMMENCING at a 1/2" iron rod found for the southeast corner of Lot 6, Block 3 Handley Heights South Addition, the southwest corner of Lot 7, Block 3 Handley Heights South Addition as it appears upon the plat as recorded in Volume 388-D, Page 199 of said Plat Records and in the north right of way line of Dowdell Road (a 60 foot right of way), from which a 1/2" iron rod found at the southeast corner of Lot 7, Block 3 Handley Heights South Addition and the southwest corner of Lot 8, Block 3 Handley Heights South Addition and in the north right of way line of Dowdell Road (a 60 foot right of way) bears N 89°28'15" E, a distance of 310.68'.

THENCE S 0°18'49" E departing the common line of Block 3 Handley Heights South Addition and Dowdell Road, a distance of 55.34 feet to a point in the south right of way line of Dowdell Road and in the north line of Lots 8B & 9B, Block 4 Handley Heights South addition as described in the deed as recorded in Volume 9213, Page 1503 (D.R.T.C.T.),

THENCE S 89°41'11" W along the common line of Lots 8B & 9B and the south line of Dowdell Road, a distance of 100.44 feet to the northwest corner of Lots 8B & 9B and Lots 8A & 9A, Block 4 Handley Heights South addition as described in the deed as recorded in Volume 9213, Page 1503 (D.R.T.C.T.) and in the south right of way line of Dowdell Road,

THENCE S 89°27'44" W along the common line of Lots 8A & 9A, Block 4 Handley Heights South Addition and the south line of Dowdell Road, a distance of 209.65 feet to a point for the northwest corner of Lots 8A & 9A and the northeast corner of Lots 1B, 2B1, 3B1, N½ 6, 10B, 11B, 12B, & 13B, Block 4 Handley Heights South Addition

THENCE S 00°18'49" E along the common line of Lots 8A & 9A, and Lots 1B, 2B1, 3B1, N½ 6, 10B, 11B, 12B, & 13B, Block 4 Handley Heights South Addition, a distance of 129.30 feet to a 5/8" iron rod set with plastic cap stamped "DEOTTE RPLS 4673",

THENCE S 70°09'30" W departing the common line of Lots 8A & 9A, and Lots 1B, 2B1, 3B1, N½ 6, 10B, 11B, 12B, & 13B, Block 4 Handley Heights South Addition, a distance of 256.92 feet to the POINT OF BEGINNING,

THENCE S 35°54'00" W, a distance of 61.52 feet to a point

THENCE S 07°28'53" W, a distance of 165.95 feet to a point

THENCE S 68°37'43" W, a distance of 28.54 feet to a point

THENCE N 07°28'53" E, a distance of 186.06 feet to a point

THENCE N 35°54'00" E, a distance of 31.14 feet to a point

THENCE N 70°09'30" E, a distance of 44.41 feet to the POINT OF BEGINNING containing 5,558 square feet or 0.128 acres more or less of which 4,544 square feet or 0.104 acres more or less lie within existing easements leaving 1,014 square feet or 0.023 acres more or less exclusive of said existing easements.

TCE No.3

Being a portion of Lots 1B, 2B1, 3B1, N½ 6, 10B, 11B, 12B, & 13B, Block 4 of Handley Heights South, an addition of the City of Fort Worth, Tarrant County, Texas, as it appears upon the plat as recorded in Volume 1867, Page 310 of the Plat Records, Tarrant County, Texas (P.R.T.C.T), and being more particularly described as follows:

COMMENCING at a 1/2" iron rod found for the southeast corner of Lot 6, Block 3 Handley Heights South Addition, the southwest corner of Lot 7, Block 3 Handley Heights South Addition as it appears upon the plat as recorded in Volume 388-D, Page 199 of said Plat Records and in the north right of way line of Dowdell Road (a 60 foot right of way), from which a 1/2" iron rod found at the southeast corner of Lot 7, Block 3 Handley Heights South Addition and the southwest corner of Lot 8, Block 3 Handley Heights South Addition and in the north right of way line of Dowdell Road (a 60 foot right of way) bears N 89°28'15" E, a distance of 310.68'.

THENCE S 0°18'49" E departing the common line of Block 3 Handley Heights South Addition and Dowdell Road, a distance of 55.34 feet to a point in the south right of way line of Dowdell Road and in the north line of Lots 8B & 9B, Block 4 Handley Heights South addition as described in the deed as recorded in Volume 9213, Page 1503 (D.R.T.C.T.),

THENCE S 89°41'11" W along the common line of Lots 8B & 9B and the south line of Dowdell Road, a distance of 100.44 feet to the northwest corner of Lots 8B & 9B and Lots 8A & 9A, Block 4 Handley Heights South addition as described in the deed as recorded in Volume 9213, Page 1503 (D.R.T.C.T.) and in the south right of way line of Dowdell Road,

THENCE S 89°27'44" W along the common line of Lots 8A & 9A, Block 4 Handley Heights South Addition and the south line of Dowdell Road, a distance of 209.65 feet to a point for the northwest corner of Lots 8A & 9A and the northeast corner of Lots 1B, 2B1, 3B1, N½ 6, 10B, 11B, 12B, & 13B, Block 4 Handley Heights South Addition

THENCE S 00°18'49" E along the common line of Lots 8A & 9A, and Lots 1B, 2B1, 3B1, N½ 6, 10B, 11B, 12B, & 13B, Block 4 Handley Heights South Addition, a distance of 108.08 feet to a 5/8" iron rod set with plastic cap stamped "DEOTTE RPLS 4673",

THENCE S 70°09'30" W departing the common line of Lots 8A & 9A, and Lots 1B, 2B1, 3B1, N½ 6, 10B, 11B, 12B, & 13B, Block 4 Handley Heights South Addition, a distance of 314.59 feet to a point

THENCE S 35°54'00" W, a distance of 42.37 feet to a point

THENCE S 07°28'53" W, a distance of 276.80 feet to the POINT OF BEGINNING

THENCE S 07°28'53" W, a distance of 192.71 feet to a 5/8" iron rod set with plastic cap stamped "DEOTTE RPLS 4673",

THENCE S 15°12'25" E, a distance of 133.74 feet to a 5/8" iron rod set with plastic cap stamped "DEOTTE RPLS 4673", said point also being on the common line of Lot 4, Block 1 Handley Heights South Addition and Lots 1B, 2B1, 3B1, N½ 6, 10B, 11B, 12B, & 13B, Block 4 Handley Heights South Addition

THENCE S 15°12'25" E along the common line of Lot 4, Block 1 Handley Heights South Addition and Lots 1B, 2B1, 3B1, N½ 6, 10B, 11B, 12B, & 13B, Block 4 Handley Heights South Addition, a distance of 0.10 feet to a point

THENCE N 44°16'41" W departing the common line of Lot 4 and Lots 1B, 2B1, 3B1, N½ 6, 10B, 11B, 12B, & 13B, Block 4 Handley Heights South Addition, a distance of 135.58 feet to a point

THENCE N 07°28'53" E, a distance of 243.41 feet to a point

THENCE N 86°33'36" E, a distance of 19.29 feet to a point

THENCE S 60°06'33" E, a distance of 39.01 feet to the POINT OF BEGINNING containing 16,617 square feet or 0.381 acres more or less of which 4 square feet or 0.000 acres more or less lie within existing easements leaving 16,613 square feet or 0.381 acres more or less exclusive of said existing easements.

TCE No.4

Being a portion of Lots 1B, 2B1, 3B1, N½ 6, 10B, 11B, 12B, & 13B, Block 4 of Handley Heights South, an addition of the City of Fort Worth, Tarrant County, Texas, as it appears upon the plat as recorded in Volume 1867, Page 310 of the Plat Records, Tarrant County, Texas (P.R.T.C.T), and being more particularly described as follows:

COMMENCING at a 1/2" iron rod found for the southeast corner of Lot 6, Block 3 Handley Heights South Addition, the southwest corner of Lot 7, Block 3 Handley Heights South Addition as it appears upon the plat as recorded in Volume 388-D, Page 199 of said Plat Records and in the north right of way line of Dowdell Road (a 60 foot right of way), from which a 1/2" iron rod found at the southeast corner of Lot 7, Block 3 Handley Heights South Addition and the southwest corner of Lot 8, Block 3 Handley Heights South Addition and in the north right of way line of Dowdell Road (a 60 foot right of way) bears N 89°28'15" E, a distance of 310.68'.

THENCE S 0°18'49" E departing the common line of Block 3 Handley Heights South Addition and Dowdell Road, a distance of 55.34 feet to a point in the south right of way line of Dowdell Road and in the north line of Lots 8B & 9B, Block 4 Handley Heights South addition as described in the deed as recorded in Volume 9213, Page 1503 (D.R.T.C.T.),

THENCE S 89°41'11" W along the common line of Lots 8B & 9B and the south line of Dowdell Road, a distance of 100.44 feet to the northwest corner of Lots 8B & 9B and Lots 8A & 9A,

Block 4 Handley Heights South addition as described in the deed as recorded in Volume 9213, Page 1503 (D.R.T.C.T.) and in the south right of way line of Dowdell Road,

THENCE S 89°27'44" W along the common line of Lots 8A & 9A, Block 4 Handley Heights South Addition and the south line of Dowdell Road, a distance of 209.65 feet to a point for the northwest corner of Lots 8A & 9A and the northeast corner of Lots 1B, 2B1, 3B1, N½ 6, 10B, 11B, 12B, & 13B, Block 4 Handley Heights South Addition

THENCE S 00°18'49" E along the common line of Lots 8A & 9A, and Lots 1B, 2B1, 3B1, N½ 6, 10B, 11B, 12B, & 13B, Block 4 Handley Heights South Addition, a distance of 129.30 feet to a 5/8" iron rod set with plastic cap stamped "DEOTTE RPLS 4673",

THENCE S 70°09'30" W departing the common line of Lots 8A & 9A, and Lots 1B, 2B1, 3B1, N½ 6, 10B, 11B, 12B, & 13B, Block 4 Handley Heights South Addition, a distance of 301.33 feet to a point

THENCE S 35°54'00" W, a distance of 31.14 feet to a point

THENCE S 07°28'53" W, a distance of 276.89 feet to the POINT OF BEGINNING

THENCE S 70°06'31" E, a distance of 25.60 feet to a point

THENCE S 07°28'53" W, a distance of 173.02 feet to a point

THENCE S 44°16'41" E, a distance of 113.19 feet to a point

THENCE S 15°12'25" E, a distance of 52.21 feet to a point on the common line of Lot 4, Block 1 Handley Heights South Addition and Lots 1B, 2B1, 3B1, N½ 6, 10B, 11B, 12B, & 13B, Block 4 Handley Heights South Addition

THENCE S 89°35'50" W along the common line of Lot 4 and Lots 1B, 2B1, 3B1, N½ 6, 10B, 11B, 12B, & 13B, Block 4 Handley Heights South Addition, a distance of 82.75 feet to a 5/8" iron rod set with plastic cap stamped "DEOTTE RPLS 4673",

THENCE N 15°12'25" W departing the common line of Lot 4 and Lots 1B, 2B1, 3B1, N½ 6, 10B, 11B, 12B, & 13B, Block 4 Handley Heights South Addition, a distance of 135.01 feet to a 5/8" iron rod set with plastic cap stamped "DEOTTE RPLS 4673",

THENCE N 07°28'53" E, a distance of 183.54 feet to the POINT OF BEGINNING containing 13,044 square feet or 0.299 acres more or less of which 6,926 square feet or 0.159 acres more or less lie within existing easements leaving 6,119 square feet or 0.140 acres more or less exclusive of said existing easements.

TCE No.5

Being a portion of Lots 1B, 2B1, 3B1, N½ 6, 10B, 11B, 12B, & 13B, Block 4 of Handley Heights South, an addition of the City of Fort Worth, Tarrant County, Texas, as it appears upon the plat as recorded in Volume 1867, Page 310 of the Plat Records, Tarrant County, Texas (P.R.T.C.T), and being more particularly described as follows:

COMMENCING at a 1/2" iron rod found for the southeast corner of Lot 6, Block 3 Handley Heights South Addition, the southwest corner of Lot 7, Block 3 Handley Heights South Addition as it appears upon the plat as recorded in Volume 388-D, Page 199 of said Plat Records and in the north right of way line of Dowdell Road (a 60 foot right of way), from which a 1/2" iron rod found at the southeast corner of Lot 7, Block 3 Handley Heights South Addition and the southwest corner of Lot 8, Block 3 Handley Heights South Addition and in the north right of way line of Dowdell Road (a 60 foot right of way) bears N 89°28'15" E, a distance of 310.68'.

THENCE S 0°18'49" E departing the common line of Block 3 Handley Heights South Addition and Dowdell Road, a distance of 55.34 feet to a point in the south right of way line of Dowdell Road and in the north line of Lots 8B & 9B, Block 4 Handley Heights South addition as described in the deed as recorded in Volume 9213, Page 1503 (D.R.T.C.T.),

THENCE S 89°41'11" W along the common line of Lots 8B & 9B and the south line of Dowdell Road, a distance of 100.44 feet to the northwest corner of Lots 8B & 9B and Lots 8A & 9A, Block 4 Handley Heights South addition as described in the deed as recorded in Volume 9213, Page 1503 (D.R.T.C.T.) and in the south right of way line of Dowdell Road,

THENCE S 89°27'44" W along the common line of Lots 8A & 9A, Block 4 Handley Heights South Addition and the south line of Dowdell Road, a distance of 209.65 feet to a point for the northwest corner of Lots 8A & 9A and the northeast corner of Lots 1B, 2B1, 3B1, N½ 6, 10B, 11B, 12B, & 13B, Block 4 Handley Heights South Addition

THENCE S 00°18'49" E along the common line of Lots 8A & 9A, and Lots 1B, 2B1, 3B1, N½ 6, 10B, 11B, 12B, & 13B, Block 4 Handley Heights South Addition, a distance of 1401.30 feet to a point for the southwest corner of Lot 5, Block 4 Handley Heights South Addition and an interior corner of Lots 1B, 2B1, 3B1, N½ 6, 10B, 11B, 12B, & 13B, Block 4 Handley Heights South Addition

THENCE S 89°41'11" W along the common line of Lot 5, and Lots 1B, 2B1, 3B1, N½ 6, 10B, 11B, 12B, & 13B, Block 4 Handley Heights South Addition, a distance of 300.78 feet to a 5/8" iron rod set with plastic cap stamped "DEOTTE RPLS 4673", said point also being the POINT OF BEGINNING,

THENCE S 02°25'12" W departing the common line of Lot 5, and Lots 1B, 2B1, 3B1, N½ 6, 10B, 11B, 12B, & 13B, Block 4 Handley Heights South Addition, a distance of 110.07 feet to a 5/8" iron rod set with plastic cap stamped "DEOTTE RPLS 4673",

THENCE S 17°11'43" W, a distance of 58.40 feet to a 5/8" iron rod set with plastic cap stamped "DEOTTE RPLS 4673", being on the common line of the south half of Lot 6, and Lots 1B, 2B1, 3B1, N½ 6, 10B, 11B, 12B, & 13B, Block 4 Handley Heights South Addition

THENCE N 89°55'48" W along the common line of the south half of Lot 6, and Lots 1B, 2B1, 3B1, N½ 6, 10B, 11B, 12B, & 13B, Block 4 Handley Heights South Addition, a distance of 83.71 feet to a point,

THENCE N 17°11'43" E departing the common line of the south half of Lot 6, and Lots 1B, 2B1, 3B1, N½ 6, 10B, 11B, 12B, & 13B, Block 4 Handley Heights South Addition, a distance of 80.57 feet to a point,

THENCE N 42°41'17" E, a distance of 120.66 feet to the POINT OF BEGINNING containing 9,851 square feet or 0.226 acres more or less

TCE No.6

Being a portion of Lots 1B, 2B1, 3B1, N½ 6, 10B, 11B, 12B, & 13B, Block 4 of Handley Heights South, an addition of the City of Fort Worth, Tarrant County, Texas, as it appears upon the plat as recorded in Volume 1867, Page 310 of the Plat Records, Tarrant County, Texas (P.R.T.C.T), and being more particularly described as follows:

COMMENCING at a 1/2" iron rod found for the southeast corner of Lot 6, Block 3 Handley Heights South Addition, the southwest corner of Lot 7, Block 3 Handley Heights South Addition as it appears upon the plat as recorded in Volume 388-D, Page 199 of said Plat Records and in the north right of way line of Dowdell Road (a 60 foot right of way), from which a 1/2" iron rod found at the southeast corner of Lot 7, Block 3 Handley Heights South Addition and the southwest corner of Lot 8, Block 3 Handley Heights South Addition and in the north right of way line of Dowdell Road (a 60 foot right of way) bears N 89°28'15" E, a distance of 310.68'.

THENCE S 0°18'49" E departing the common line of Block 3 Handley Heights South Addition and Dowdell Road, a distance of 55.34 feet to a point in the south right of way line of Dowdell Road and in the north line of Lots 8B & 9B, Block 4 Handley Heights South addition as described in the deed as recorded in Volume 9213, Page 1503 (D.R.T.C.T.),

THENCE S 89°41'11" W along the common line of Lots 8B & 9B and the south line of Dowdell Road, a distance of 100.44 feet to the northwest corner of Lots 8B & 9B and Lots 8A & 9A, Block 4 Handley Heights South addition as described in the deed as recorded in Volume 9213, Page 1503 (D.R.T.C.T.) and in the south right of way line of Dowdell Road,

THENCE S 89°27'44" W along the common line of Lots 8A & 9A, Block 4 Handley Heights South Addition and the south line of Dowdell Road, a distance of 209.65 feet to a point for the northwest corner of Lots 8A & 9A and the northeast corner of Lots 1B, 2B1, 3B1, N½ 6, 10B, 11B, 12B, & 13B, Block 4 Handley Heights South Addition

THENCE S 00°18'49" E along the common line of Lots 8A & 9A, and Lots 1B, 2B1, 3B1, N½ 6, 10B, 11B, 12B, & 13B, Block 4 Handley Heights South Addition, a distance of 1401.30 feet to a point for the southwest corner of Lot 5, Block 4 Handley Heights South Addition and an interior corner of Lots 1B, 2B1, 3B1, N½ 6, 10B, 11B, 12B, & 13B, Block 4 Handley Heights South Addition

THENCE S 89°41'11" W along the common line of Lot 5, and Lots 1B, 2B1, 3B1, N½ 6, 10B, 11B, 12B, & 13B, Block 4 Handley Heights South Addition, a distance of 200.67 feet to the POINT OF BEGINNING,

THENCE S 02°25'12" W departing the common line of Lot 5, and Lots 1B, 2B1, 3B1, N½ 6, 10B, 11B, 12B, & 13B, Block 4 Handley Heights South Addition, a distance of 41.44 feet to a point,

THENCE S 42°41'17" W, a distance of 134.70 feet to a point,

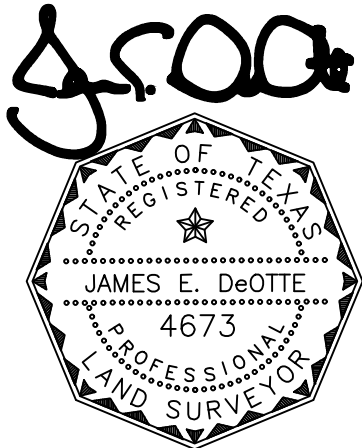
THENCE N 17°11'43" E, a distance of 27.69 feet to a 5/8" iron rod set with plastic cap stamped "DEOTTE RPLS 4673",

THENCE N 02°25'12" E, a distance of 113.62 feet to a 5/8" iron rod set with plastic cap stamped "DEOTTE RPLS 4673", said point also being in the common line of Lot 5, and Lots 1B, 2B1, 3B1, N½ 6, 10B, 11B, 12B, & 13B, Block 4 Handley Heights South Addition

THENCE N 89°41'11" E along the common line of Lot 5, and Lots 1B, 2B1, 3B1, N½ 6, 10B, 11B, 12B, & 13B, Block 4 Handley Heights South Addition, a distance of 80.09 feet to the POINT OF BEGINNING containing 7,005 square feet or 0.161 acres more or less of which 3,517 square feet or 0.081 acres more or less lie within existing easements leaving 3,488 square feet or 0.080 acres more or less exclusive of said existing easements.

NOTES:

- 1) All bearings and coordinates are in US survey feet surface using a scale factor of 1.000137001 and referenced to the Texas Coordinate System, Nad-83, The North Central Zone 4202.
- 2) Exhibit B of same date accompanies this legal description.



Date: 2/21/2020

James E. DeOtte
Registered Professional Land Surveyor
No. 4673

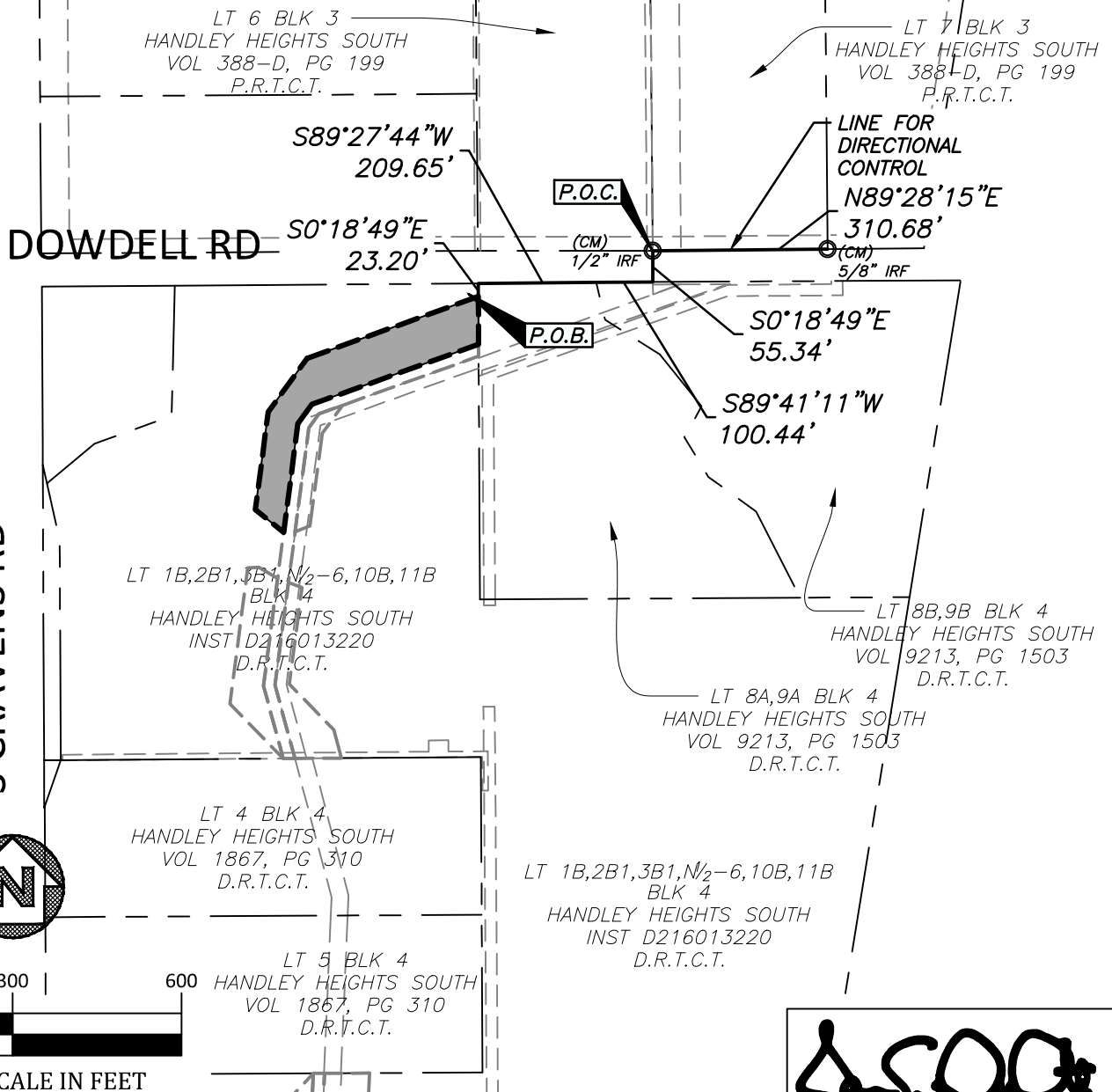
James DeOtte Engineering, Inc.
TBPLS Firm No. 10101400
2201 Dottie Lynn Parkway, Suite 119
Fort Worth, Texas 76120
(817) 446 – 6877

COMMENCING DETAIL

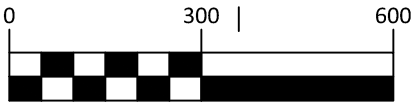
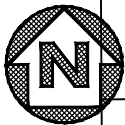
SCALE 1"=300'

EXHIBIT B

PAGE 10 OF 28



S CRAVENS RD



GRAPHIC SCALE IN FEET

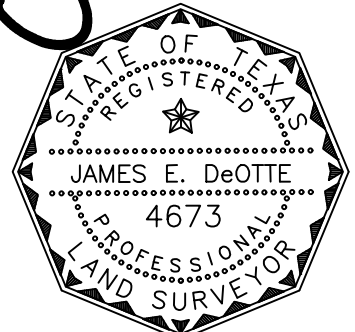


City of Fort Worth

200 TEXAS STREET
FORT WORTH, TX. 76102

EXHIBIT A SHOWING A
PARCEL OF PROPERTY
OUT OF
LOT 1B,2B1,3B1,N¹/₂ 6,10B,11B BLOCK 4
HANDLEY HEIGHTS SOUTH
SITUATED IN THE
J A CREARY SURVEY
TARRANT COUNTY, TEXAS
AS RECORDED IN
VOLUME 1867, PAGE 310
DEED RECORDS OF TARRANT COUNTY TEXAS

J. E. DeOtte



Date: 2/21/2020

PROJECT: LAKE ARLINGTON LIFT STATION AND FORCE MAIN	CITY PROJECT No. 100995
TEMPORARY CONSTRUCTION EASEMENT No. 1	PARCEL NO. 43
LAND ACQUISITION AREA: 40,070 SQ FT OR 0.920 AC	
JDEI JOB No. 201704200	DRAWN BY: TC
	PAGE 10 OF 28

EXHIBIT B

PAGE 11 OF 28

DOWDELL RD

S CRAVENS RD

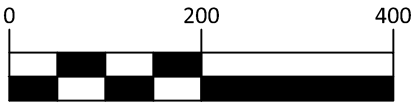
P.O.C.

(CM)
1/2" IRF

PAGE 12 OF 28

P.O.B.

PAGE 13 OF 28



GRAPHIC SCALE IN FEET

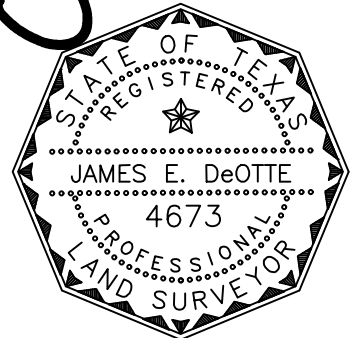


City of Fort Worth

200 TEXAS STREET
FORT WORTH, TX. 76102

EXHIBIT A SHOWING A
PARCEL OF PROPERTY
OUT OF
LOT 1B, 2B1, 3B1, N $\frac{1}{2}$ 6, 10B, 11B BLOCK 4
HANDLEY HEIGHTS SOUTH
SITUATED IN THE
J A CREARY SURVEY
TARRANT COUNTY, TEXAS
AS RECORDED IN
VOLUME 1867, PAGE 310
DEED RECORDS OF TARRANT COUNTY TEXAS

J. E. DeOtte



Date: 2/21/2020

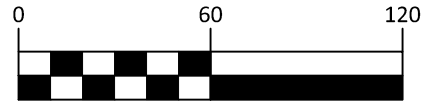
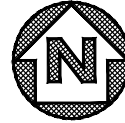
PROJECT: LAKE ARLINGTON LIFT STATION AND FORCE MAIN	CITY PROJECT No. 100995
TEMPORARY CONSTRUCTION EASEMENT No. 1	PARCEL NO. 43
LAND ACQUISITION AREA: 40,070 SQ FT OR 0.920 AC	
JDEI JOB No. 201704200	DRAWN BY: TC
	PAGE 11 OF 28

LEGEND:

PROPERTY BOUNDARY	— — — — —
EX. EASEMENT	- - - - -
PROP. EASEMENT	▬▬▬▬▬▬▬▬▬▬
CAPPED IRON ROD SET	CIRS
IRON ROD FOUND	IRF
DEED RECORDS TARRANT COUNTY TEXAS D.R.T.C.T.	
PLAT RECORDS TARRANT COUNTY TEXAS P.R.T.C.T.	

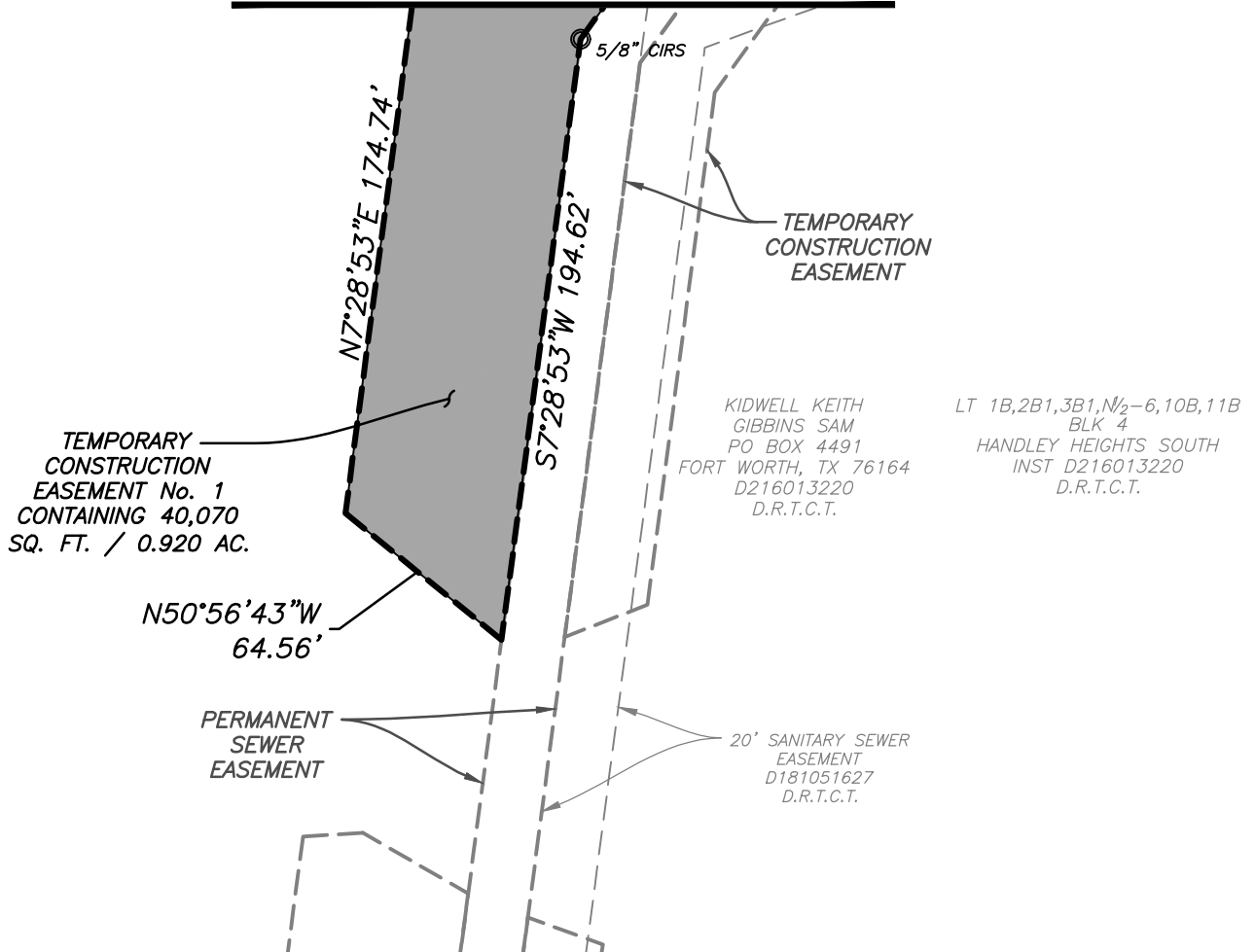
EXHIBIT B

PAGE 13 OF 28



GRAPHIC SCALE IN FEET

MATCH LINE

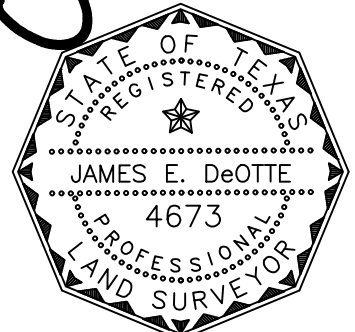


City of Fort Worth

200 TEXAS STREET
FORT WORTH, TX. 76102

EXHIBIT A SHOWING A
PARCEL OF PROPERTY
OUT OF
LOT 1B,2B1,3B1,N¹/₂ 6,10B,11B BLOCK 4
HANDLEY HEIGHTS SOUTH
SITUATED IN THE
J A CREAMY SURVEY
TARRANT COUNTY, TEXAS
AS RECORDED IN
VOLUME 1867, PAGE 310
DEED RECORDS OF TARRANT COUNTY TEXAS

J. E. DeOtte



Date: 2/21/2020

PROJECT: LAKE ARLINGTON LIFT STATION AND FORCE MAIN	CITY PROJECT No. 100995
TEMPORARY CONSTRUCTION EASEMENT No. 1	PARCEL NO. 43
LAND ACQUISITION AREA: 40,070 SQ FT OR 0.920 AC	
JDEI JOB No. 201704200	DRAWN BY: TC
	PAGE 13 OF 28

COMMENCING DETAIL
SCALE 1"=200'

EXHIBIT B
PAGE 15 OF 28

LT 6 BLK 3
HANDLEY HEIGHTS SOUTH
VOL 388-D, PG 199
P.R.T.C.T.

LT 7 BLK 3
HANDLEY HEIGHTS SOUTH
VOL 388-D, PG 199
P.R.T.C.T.

S89°27'44"W
209.65'

LINE FOR
DIRECTIONAL
CONTROL

N89°28'15"E
310.68'

S0°18'49"E
129.30'

P.O.C.

(CM)
1/2" IRF

(CM)
5/8" IRF

DOWDELL RD

S70°09'30"W
256.92'

S0°18'49"E
55.34'

S89°41'11"W
100.44'

N70°09'30"E
44.41'

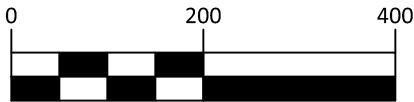
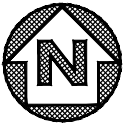
P.O.B.

LT 8B,9B BLK 4
HANDLEY HEIGHTS SOUTH
VOL 9213, PG 1503
D.R.T.C.T.

LT 8A,9A BLK 4
HANDLEY HEIGHTS SOUTH
VOL 9213, PG 1503
D.R.T.C.T.

LT 1B,2B1,3B1,N₂-6,10B,11B
BLK 4
HANDLEY HEIGHTS SOUTH
INST D216013220
D.R.T.C.T.

PAGE 16 OF 28



GRAPHIC SCALE IN FEET

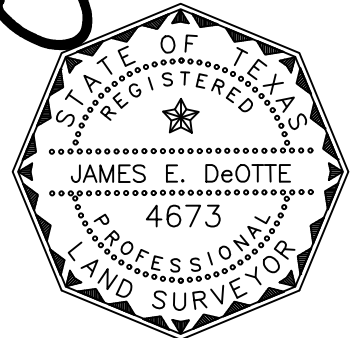


City of Fort Worth

200 TEXAS STREET
FORT WORTH, TX. 76102

EXHIBIT A SHOWING A
PARCEL OF PROPERTY
OUT OF
LOT 1B,2B1,3B1,N₂-6,10B,11B BLOCK 4
HANDLEY HEIGHTS SOUTH
SITUATED IN THE
J A CREARY SURVEY
TARRANT COUNTY, TEXAS
AS RECORDED IN
VOLUME 1867, PAGE 310
DEED RECORDS OF TARRANT COUNTY TEXAS

J. E. DeOtte



Date: 2/21/2020

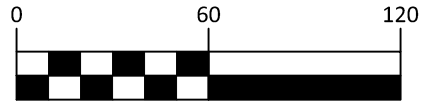
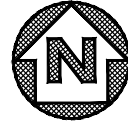
PROJECT: LAKE ARLINGTON LIFT STATION AND FORCE MAIN	CITY PROJECT No. 100995
TEMPORARY CONSTRUCTION EASEMENT No. 2	PARCEL NO. 43
LAND ACQUISITION AREA: 5,558 SQ FT OR 0.128 AC	
JDEI JOB No. 201704200	DRAWN BY: TC
	PAGE 15 OF 28

EXHIBIT B

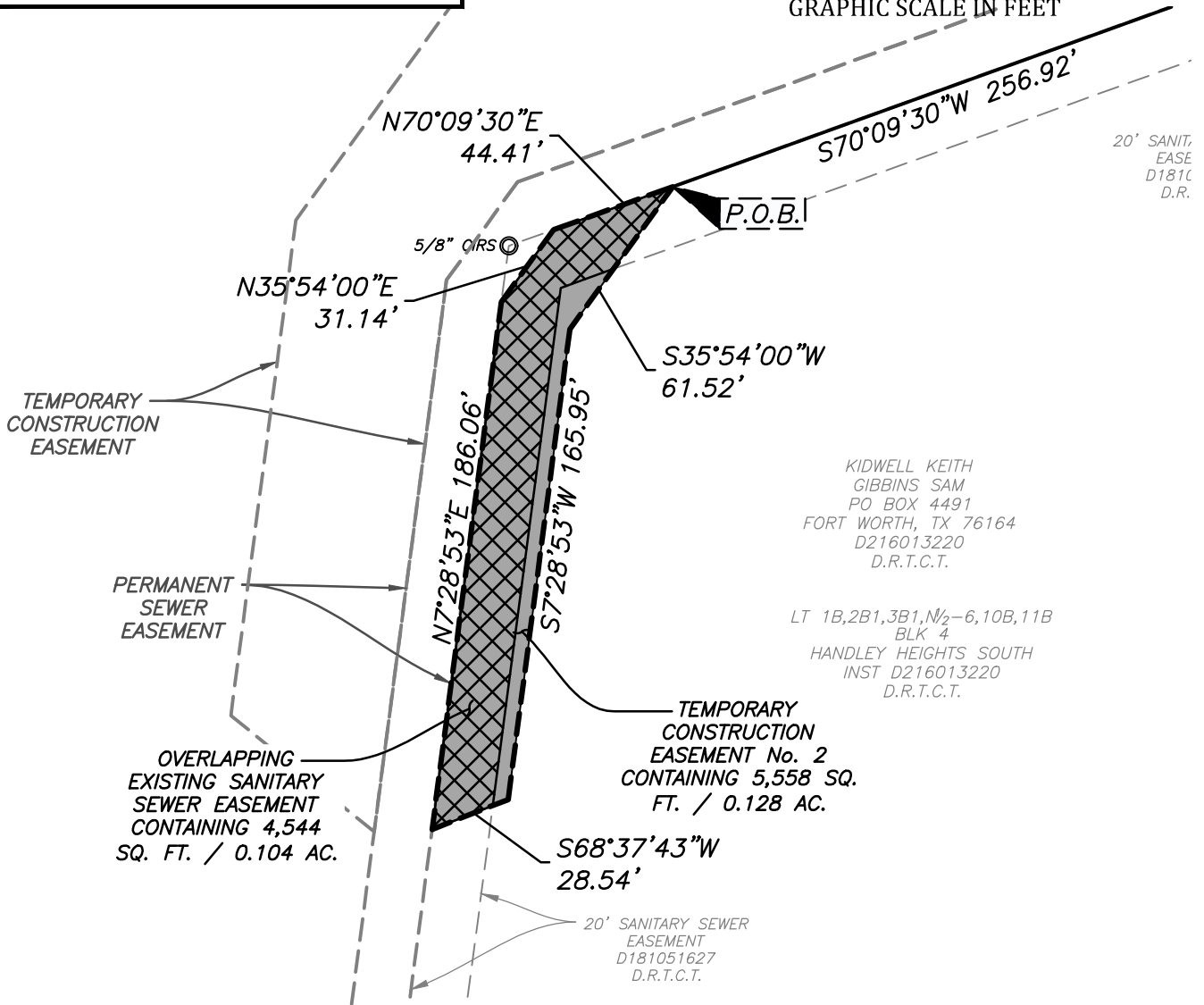
PAGE 16 OF 28

LEGEND:

- PROPERTY BOUNDARY
- EX. EASEMENT
- PROP. EASEMENT
- CAPPED IRON ROD SET CIRS
- IRON ROD FOUND IRF
- DEED RECORDS TARRANT COUNTY TEXAS D.R.T.C.T.
- PLAT RECORDS TARRANT COUNTY TEXAS P.R.T.C.T.



GRAPHIC SCALE IN FEET



20' SANIT.
EASE
D1810
D.R.

KIDWELL KEITH
GIBBINS SAM
PO BOX 4491
FORT WORTH, TX 76164
D216013220
D.R.T.C.T.

LT 1B,2B1,3B1,N₂-6,10B,11B
BLK 4
HANDLEY HEIGHTS SOUTH
INST D216013220
D.R.T.C.T.

TEMPORARY
CONSTRUCTION
EASEMENT No. 2
CONTAINING 5,558 SQ.
FT. / 0.128 AC.

OVERLAPPING
EXISTING SANITARY
SEWER EASEMENT
CONTAINING 4,544
SQ. FT. / 0.104 AC.

20' SANITARY SEWER
EASEMENT
D181051627
D.R.T.C.T.

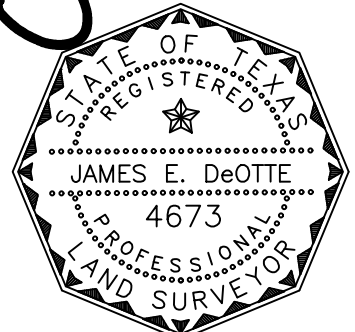


City of Fort Worth

200 TEXAS STREET
FORT WORTH, TX. 76102

EXHIBIT A SHOWING A
PARCEL OF PROPERTY
OUT OF
LOT 1B,2B1,3B1,N₂-6,10B,11B BLOCK 4
HANDLEY HEIGHTS SOUTH
SITUATED IN THE
J A CREAMY SURVEY
TARRANT COUNTY, TEXAS
AS RECORDED IN
VOLUME 1867, PAGE 310
DEED RECORDS OF TARRANT COUNTY TEXAS

J. E. DeOtte



Date: 2/21/2020

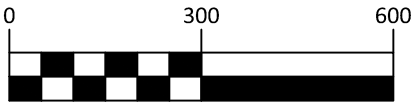
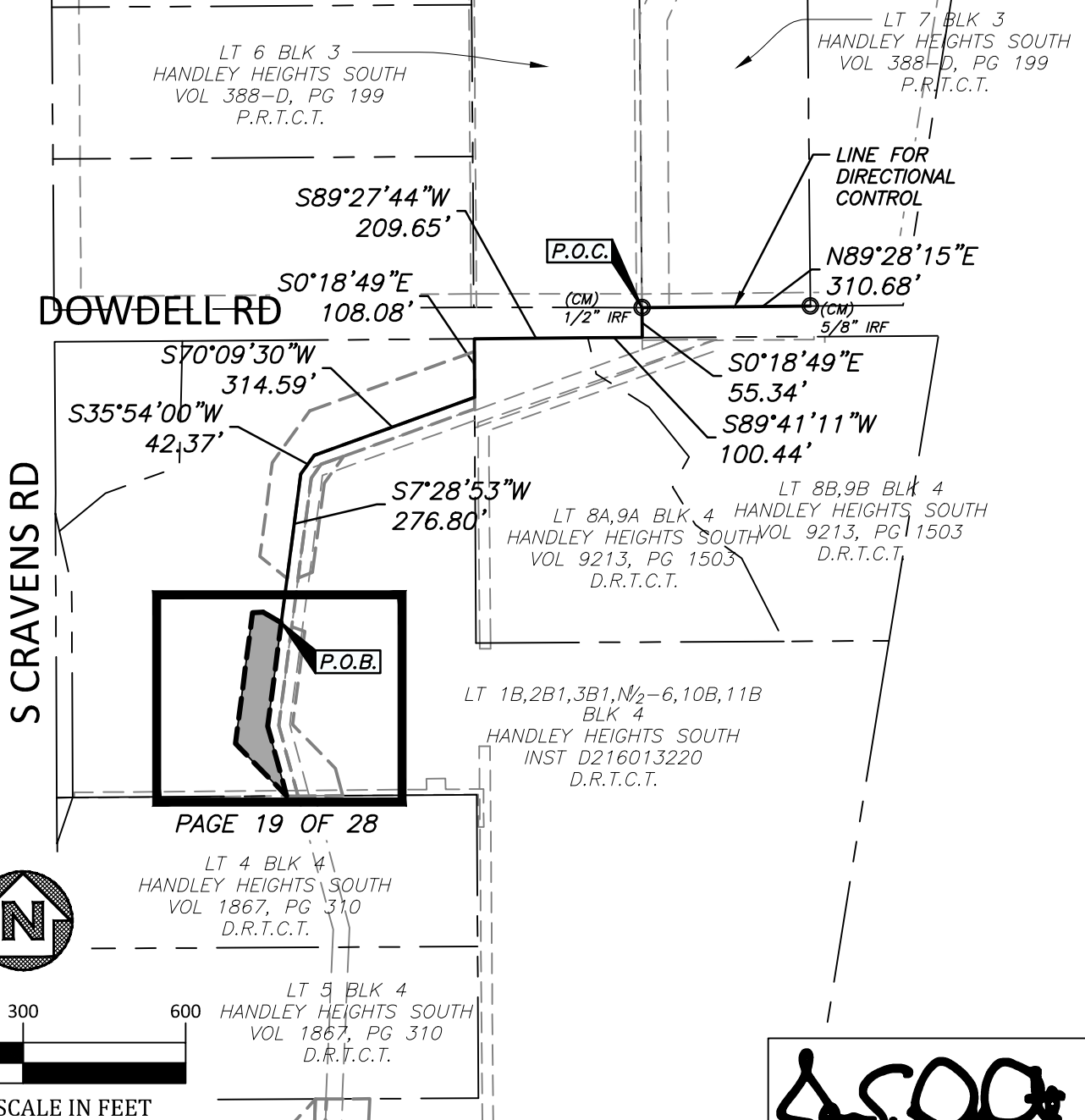
PROJECT: LAKE ARLINGTON LIFT STATION AND FORCE MAIN	CITY PROJECT No. 100995
TEMPORARY CONSTRUCTION EASEMENT No. 2	PARCEL NO. 43
LAND ACQUISITION AREA: 5,558 SQ FT OR 0.128 AC	
JDEI JOB No. 201704200	DRAWN BY: TC
	PAGE 16 OF 28

COMMENCING DETAIL

SCALE 1"=300'

EXHIBIT B

PAGE 18 OF 28



GRAPHIC SCALE IN FEET

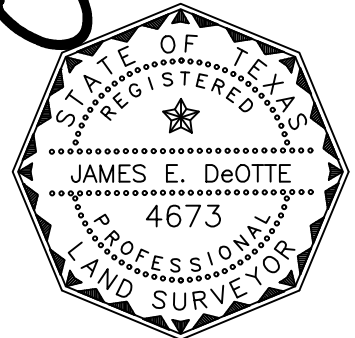


City of Fort Worth

200 TEXAS STREET
FORT WORTH, TX. 76102

EXHIBIT A SHOWING A
PARCEL OF PROPERTY
OUT OF
LOT 1B,2B1,3B1,N¹/₂-6,10B,11B BLOCK 4
HANDLEY HEIGHTS SOUTH
SITUATED IN THE
J A CREARY SURVEY
TARRANT COUNTY, TEXAS
AS RECORDED IN
VOLUME 1867, PAGE 310
DEED RECORDS OF TARRANT COUNTY TEXAS

J. E. DeOtte



Date: 2/21/2020

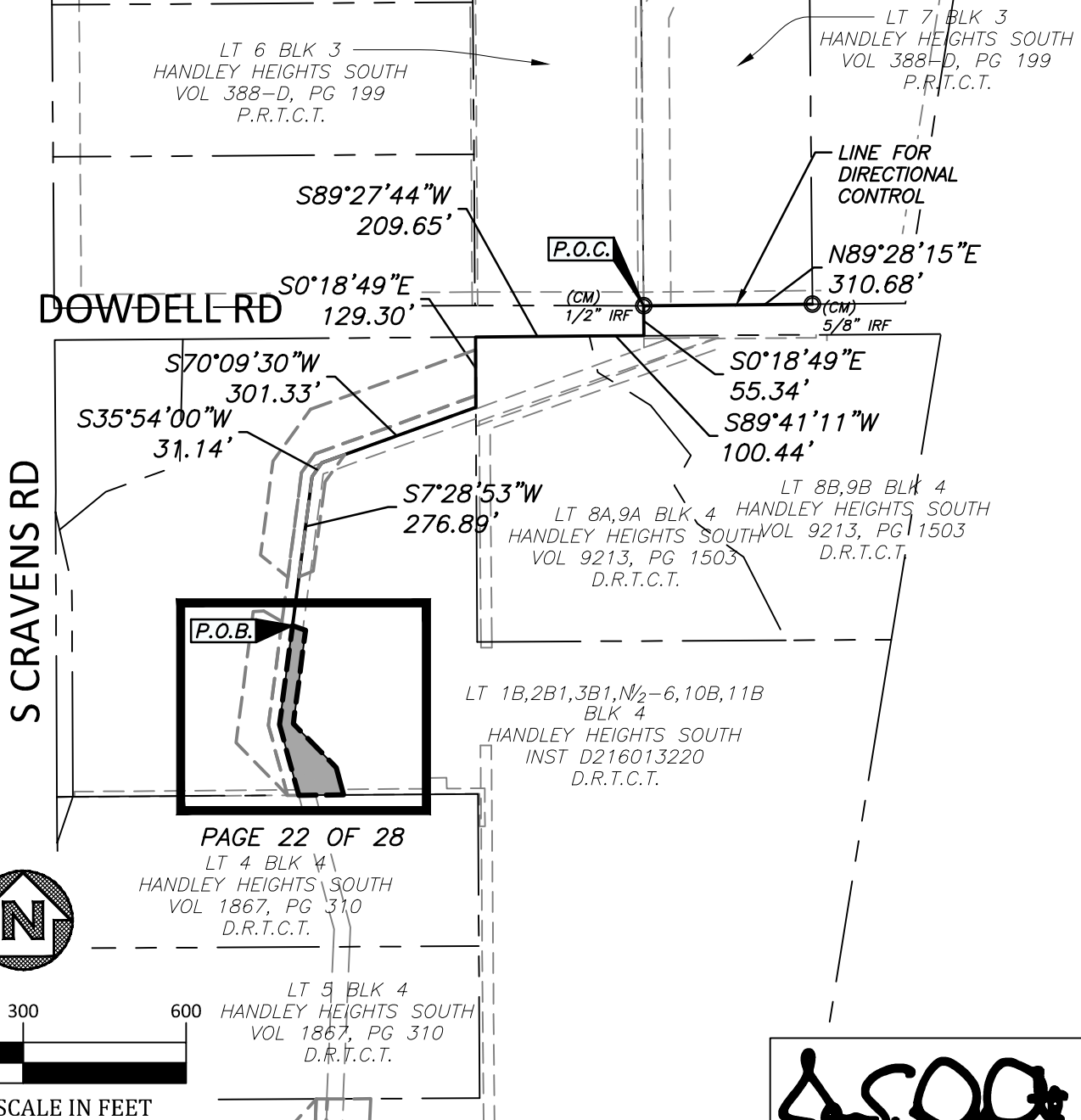
PROJECT: LAKE ARLINGTON LIFT STATION AND FORCE MAIN	CITY PROJECT No. 100995
TEMPORARY CONSTRUCTION EASEMENT No. 3	PARCEL NO. 43
LAND ACQUISITION AREA: 16,617 SQ FT OR 0.381 AC	
JDEI JOB No. 201704200	DRAWN BY: TC
	PAGE 18 OF 28

COMMENCING DETAIL

SCALE 1"=300'

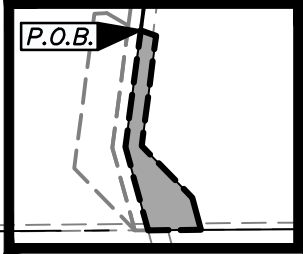
EXHIBIT B

PAGE 21 OF 28



S CRAVENS RD

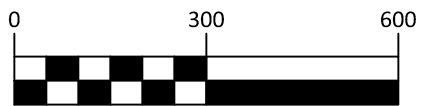
DOWDELL RD



PAGE 22 OF 28

LT 4 BLK 4
HANDLEY HEIGHTS SOUTH
VOL 1867, PG 310
D.R.T.C.T.

LT 5 BLK 4
HANDLEY HEIGHTS SOUTH
VOL 1867, PG 310
D.R.T.C.T.



GRAPHIC SCALE IN FEET

FORT WORTH

City of Fort Worth
 200 TEXAS STREET
 FORT WORTH, TX. 76102

EXHIBIT A SHOWING A
PARCEL OF PROPERTY
 OUT OF
LOT 1B,2B1,3B1,6,10B,11B BLOCK 4
HANDLEY HEIGHTS SOUTH
 SITUATED IN THE
J A CREARY SURVEY
TARRANT COUNTY, TEXAS
 AS RECORDED IN
VOLUME 1867, PAGE 310
 DEED RECORDS OF TARRANT COUNTY TEXAS

J. E. DeOtte

PROJECT: LAKE ARLINGTON LIFT STATION AND FORCE MAIN	CITY PROJECT No. 100995
TEMPORARY CONSTRUCTION EASEMENT No. 4	PARCEL NO. 43
LAND ACQUISITION AREA: 13,044 SQ FT OR 0.299 AC	
JDEI JOB No. 201704200	DRAWN BY: TC
	PAGE 21 OF 28

Date: 2/21/2020

COMMENCING DETAIL

EXHIBIT B

PAGE 24 OF 28

SCALE 1"=300'
LT 6 BLK 3
HANDLEY HEIGHTS SOUTH
VOL 388-D, PG 199
P.R.T.C.T.

LT 7 BLK 3
HANDLEY HEIGHTS SOUTH
VOL 388-D, PG 199
P.R.T.C.T.

DOWDELL RD
S89°27'44"W
209.65'

(CM)
1/2" IRF

P.O.C.

N89°28'15"E
310.68'

(CM)
5/8" IRF

LINE FOR
DIRECTIONAL
CONTROL

S0°18'49"E
55.34'

S89°41'11"W
100.44'

S CRAVENS RD

LT 1B,2B1,3B1,N₂-6,10B,11B
BLK 4
HANDLEY HEIGHTS SOUTH
INST D216013220
D.R.T.C.T.

LT 8B,9B BLK 4
HANDLEY HEIGHTS SOUTH
VOL 9213, PG 1503
D.R.T.C.T.

LT 8A,9A BLK 4
HANDLEY HEIGHTS SOUTH
VOL 9213, PG 1503
D.R.T.C.T.

1401.30'
S0°18'49"E

LT 4 BLK 4
HANDLEY HEIGHTS SOUTH
VOL 1867, PG 310
D.R.T.C.T.

LT 1B,2B1,3B1,N₂-6,10B,11B
BLK 4
HANDLEY HEIGHTS SOUTH
INST D216013220
D.R.T.C.T.

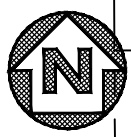
LT 5 BLK 4
HANDLEY HEIGHTS SOUTH
VOL 1867, PG 310
D.R.T.C.T.

P.O.B.

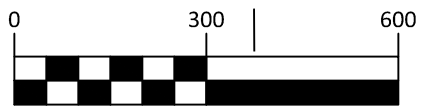
S89°41'11"W
300.78'

LT 5₂-6 BLK 4
HANDLEY HEIGHTS SOUTH
VOL 1867, PG 310
D.R.T.C.T.

LT 7 BLK 4
HANDLEY HEIGHTS SOUTH
VOL 1867, PG 310
D.R.T.C.T.

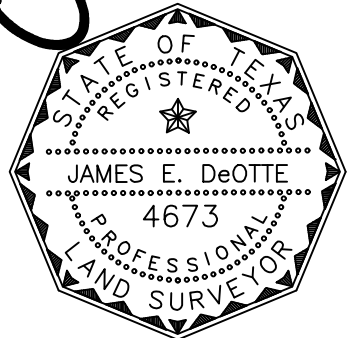


PAGE 24 OF 28



GRAPHIC SCALE IN FEET

J. E. DeOtte



Date: 2/21/2020



City of Fort Worth
200 TEXAS STREET
FORT WORTH, TX. 76102

EXHIBIT A SHOWING A
PARCEL OF PROPERTY
OUT OF
LOT 6, BLOCK 4 HANDLEY HEIGHTS SOUTH
SITUATED IN THE
J A CREAMY SURVEY
TARRANT COUNTY, TEXAS
AS RECORDED IN
VOLUME 1867, PAGE 310
DEED RECORDS OF TARRANT COUNTY TEXAS

PROJECT: LAKE ARLINGTON LIFT STATION AND FORCE MAIN	CITY PROJECT No. 100995
TEMPORARY CONSTRUCTION EASEMENT No. 5	PARCEL NO. 43
LAND ACQUISITION AREA: 9,851 SQ FT OR 0.226 AC	
JDEI JOB No. 201704200	DRAWN BY: TC
	PAGE 24 OF 28

COMMENCING DETAIL

EXHIBIT B

PAGE 27 OF 28

SCALE 1"=300'

LT 6 BLK 3
HANDLEY HEIGHTS SOUTH
VOL 388-D, PG 199
P.R.T.C.T.

LT 7 BLK 3
HANDLEY HEIGHTS SOUTH
VOL 388-D, PG 199
P.R.T.C.T.

DOWDELL RD

S89°27'44"W
209.65'

(CM)
1/2" IRF

P.O.C.

N89°28'15"E
310.68'

(CM)
5/8" IRF

LINE FOR
DIRECTIONAL
CONTROL

S0°18'49"E
55.34'

S89°41'11"W
100.44'

S CRAVENS RD

LT 1B,2B1,3B1,N₂-6,10B,11B
BLK 4
HANDLEY HEIGHTS SOUTH
INST D216013220
D.R.T.C.T.

LT 8B,9B BLK 4
HANDLEY HEIGHTS SOUTH
VOL 9213, PG 1503
D.R.T.C.T.

LT 8A,9A BLK 4
HANDLEY HEIGHTS SOUTH
VOL 9213, PG 1503
D.R.T.C.T.

1401.30'
S0°18'49"E

LT 4 BLK 4
HANDLEY HEIGHTS SOUTH
VOL 1867, PG 310
D.R.T.C.T.

LT 1B,2B1,3B1,N₂-6,10B,11B
BLK 4
HANDLEY HEIGHTS SOUTH
INST D216013220
D.R.T.C.T.

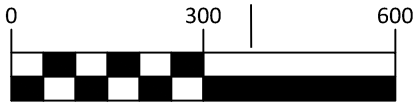
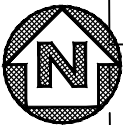
LT 5 BLK 4
HANDLEY HEIGHTS SOUTH
VOL 1867, PG 310
D.R.T.C.T.

S89°41'11"W
200.67'

LT S_{1/2}-6 BLK 4
HANDLEY HEIGHTS SOUTH
VOL 1867, PG 310
D.R.T.C.T.

P.O.B.

PAGE 27 OF 28



GRAPHIC SCALE IN FEET

LT 7 BLK 4
HANDLEY HEIGHTS SOUTH
VOL 1867, PG 310
D.R.T.C.T.

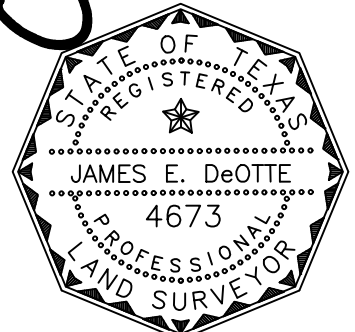


City of Fort Worth

200 TEXAS STREET
FORT WORTH, TX. 76102

EXHIBIT A SHOWING A
PARCEL OF PROPERTY
OUT OF
LOT 1B,2B1,3B1,N₂-6,10B,11B BLOCK 4
HANDLEY HEIGHTS SOUTH
SITUATED IN THE
J A CREAMY SURVEY
TARRANT COUNTY, TEXAS
AS RECORDED IN
VOLUME 1867, PAGE 310
DEED RECORDS OF TARRANT COUNTY TEXAS

J.E. DeOtte



Date: 2/21/2020

PROJECT: LAKE ARLINGTON LIFT STATION AND FORCE MAIN	CITY PROJECT No. 100995
TEMPORARY CONSTRUCTION EASEMENT No. 6	PARCEL NO. 43
LAND ACQUISITION AREA: 7,005 SQ FT OR 0.161 AC	
JDEI JOB No. 201704200	DRAWN BY: TC
PAGE 27 OF 28	

