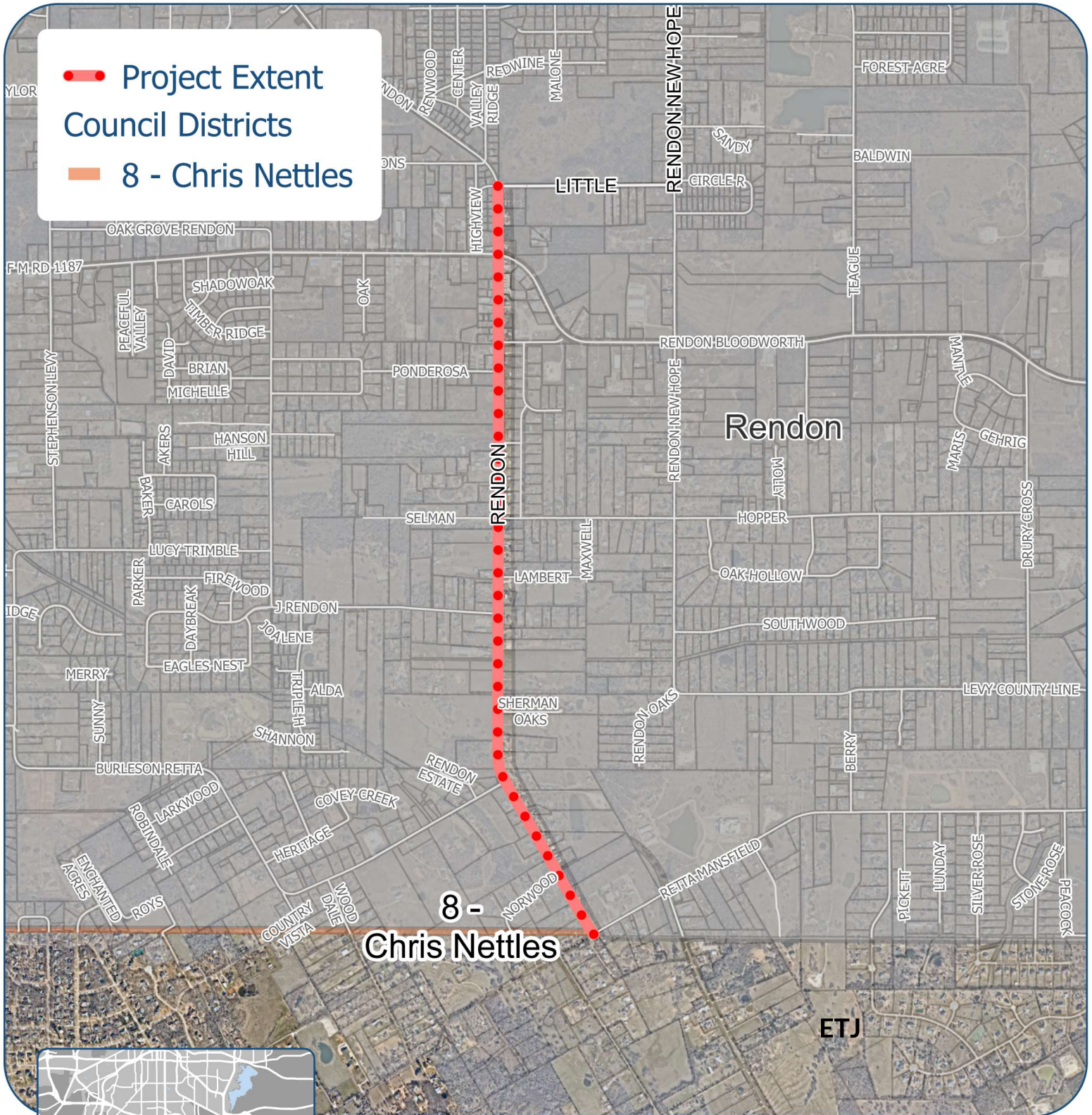


Mayor & Council Map | CPN #105354

2024 Interlocal Agreement with Tarrant County

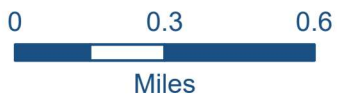
Asphalt Resurfacing | Precinct 1 | CD #8



- Project Extent
- Council Districts
- 8 - Chris Nettles

8 - Chris Nettles

ETJ



Data Source: CFW GIS, Nearmap | Map generated July 2024
TPW Business Support Services

Copyright © 2024 City of Fort Worth. Unauthorized reproduction is a violation of applicable laws. This data is to be used for graphical representation only. The accuracy is not to be taken/used as data produced for engineering purposes or by a registered professional land surveyor. The City of Fort Worth assumes no responsibility for the accuracy of said data.