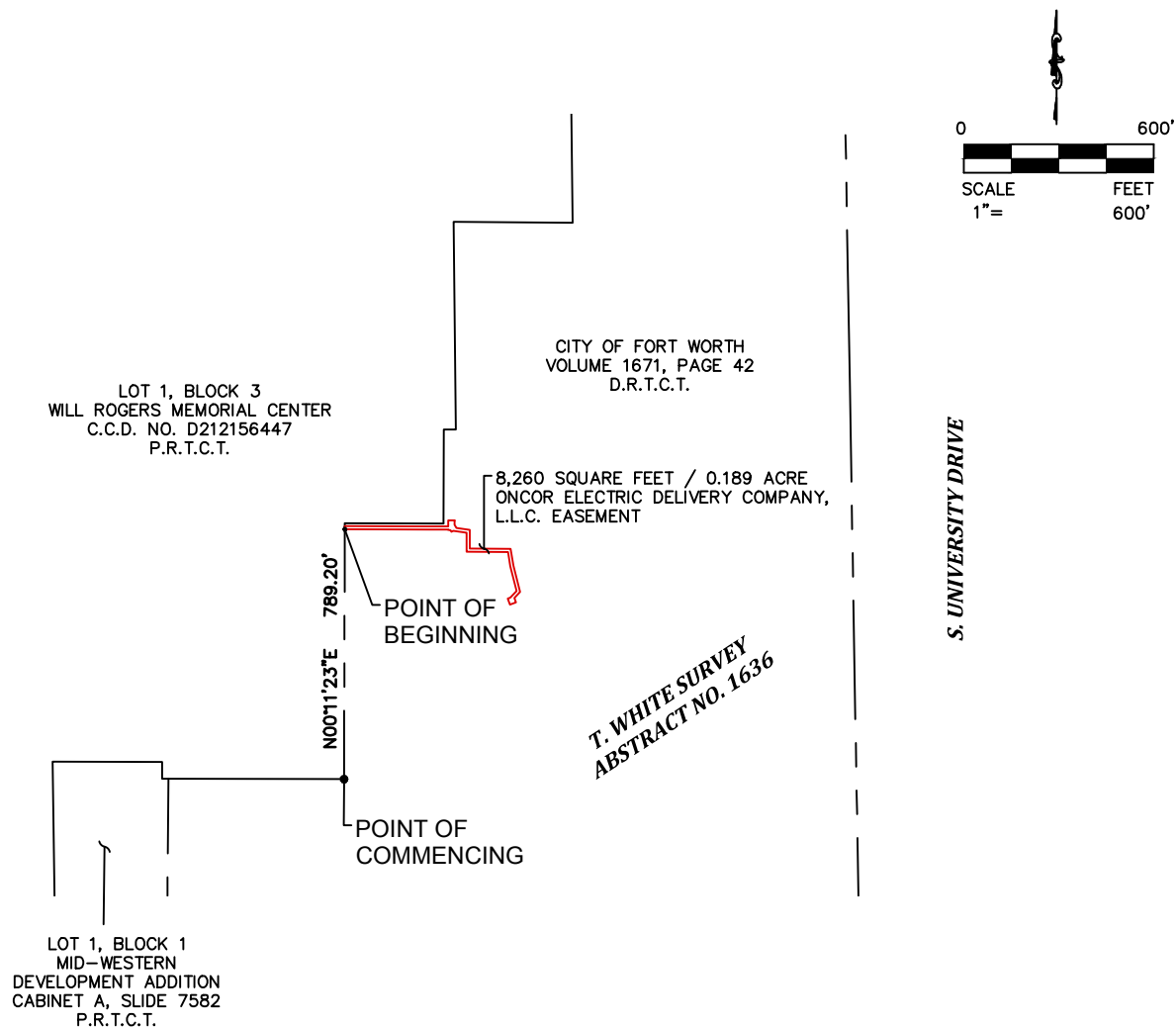


EXHIBIT "A"  
ONCOR ELECTRIC DELIVERY COMPANY, L.L.C. EASEMENT  
A PART OF THE T. WHITE SURVEY, ABSTRACT NUMBER 1636



C.C.D. NO. = COUNTY CLERK'S DOCUMENT NUMBER  
D.R.T.C.T. = DEED RECORDS, TARRANT COUNTY, TEXAS  
P.R.T.C.T. = PLAT RECORDS, TARRANT COUNTY, TEXAS

A metes and bounds description of  
even date accompanies this drawing.



550 Bailey Avenue • Suite 400 • Fort Worth, Texas 76107  
Tel: 817.335.1121  
TEXAS REGISTERED SURVEYING FIRM NO. 10098100



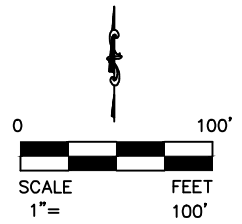
Stephen R. Glosup

11/20/2025

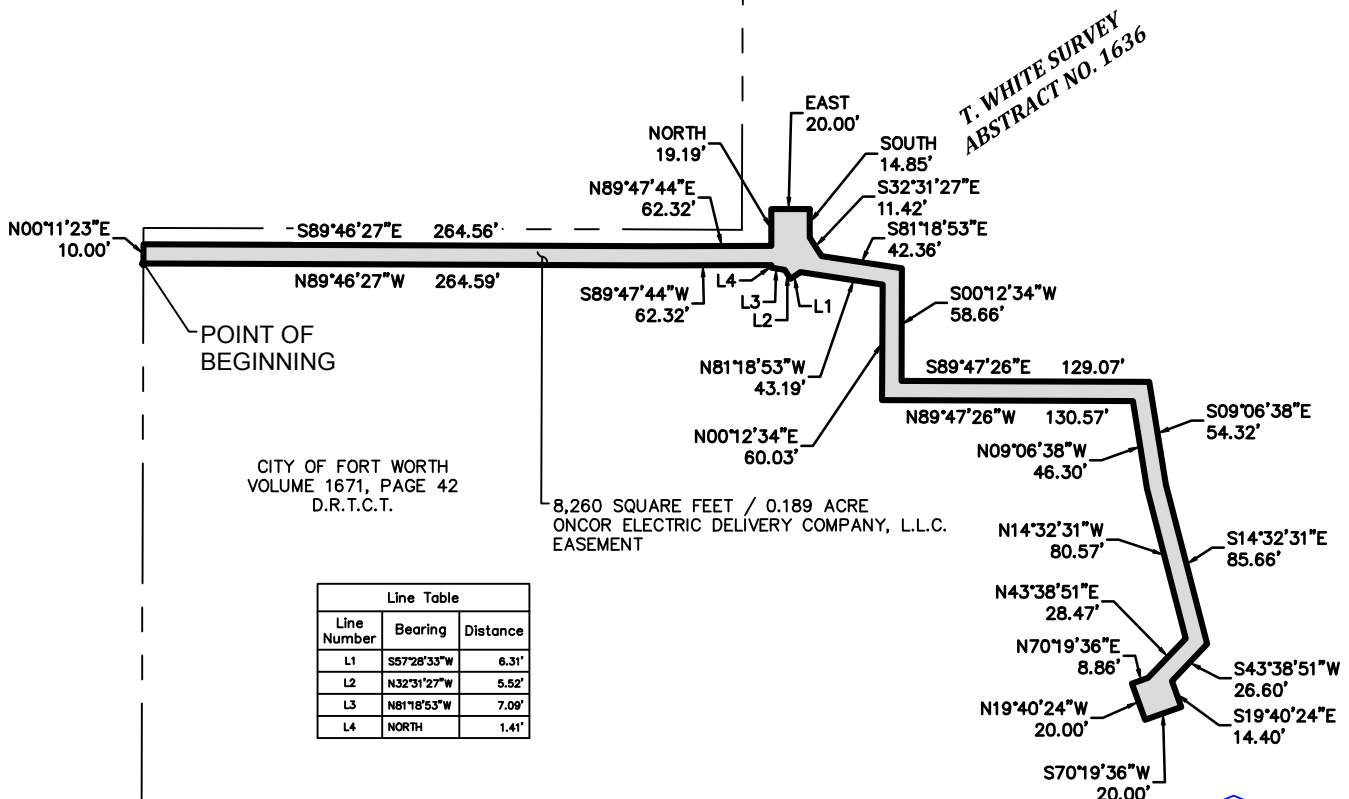
DATE: NOVEMBER 20, 2025

PAGE 1 OF 4  
DUNAWAY JOB NO. B008546.002

*EXHIBIT "A"*  
*ONCOR ELECTRIC DELIVERY COMPANY, L.L.C. EASEMENT*  
*A PART OF THE T. WHITE SURVEY, ABSTRACT NUMBER 1636*



LOT 1, BLOCK 3  
 WILL ROGERS MEMORIAL CENTER  
 C.C.D. NO. D212156447  
 P.R.T.C.T.



C.C.D. NO. = COUNTY CLERK'S DOCUMENT NUMBER

D.R.T.C.T. = DEED RECORDS, TARRANT COUNTY, TEXAS

P.R.T.C.T. = PLAT RECORDS, TARRANT COUNTY, TEXAS

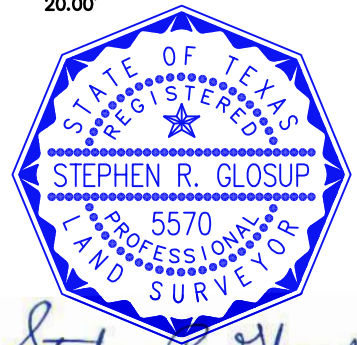
A metes and bounds description of even date accompanies this drawing.



550 Bailey Avenue • Suite 400 • Fort Worth, Texas 76107

Tel: 817.335.1121

TEXAS REGISTERED SURVEYING FIRM NO. 10098100



*Stephen R. Glosup*

DATE: NOVEMBER 20, 2025

11/20/2025 PAGE 2 OF 4  
 DUNAWAY JOB NO. B008546.002

*EXHIBIT "A"*  
*ONCOR ELECTRIC DELIVERY COMPANY, L.L.C. EASEMENT*  
*A PART OF THE T. WHITE SURVEY, ABSTRACT NUMBER 1636*

PROPERTY DESCRIPTION

BEING a tract of land situated in the T. White Survey, Abstract No. 1636, City of Fort Worth, Tarrant County, Texas and being a part of that certain tract of land described by deed to City of Fort Worth, recorded in Volume 1671, Page 42, Deed Records, Tarrant County, Texas, said tract of land being more particularly described by metes and bounds as follows:

COMMENCING at a point for the southeast corner of Lot 1, Block 3, Will Rogers Memorial Center, an Addition to the City of Fort Worth according to the plat record in County Clerk's Document Number D212156447, Plat Records, Tarrant County, Texas;

North 00°11'23" East, with the east line of said Lot 1, Block 3, Will Rogers Memorial Center, a distance of 789.20 feet to a point for the POINT OF BEGINNING of herein described tract of land;

THENCE North 00°11'23" East, continuing with the east line of said Lot 1, Block 3, Will Rogers Memorial Center, a distance of 10.00 feet to a point;

THENCE departing the east line of said Lot 1, Block 3, Will Rogers Memorial Center, crossing into said City of Fort Worth Tract the following courses and distances:

South 89°46'27" East, a distance of 264.56 feet to a point;

North 89°47'44" East, a distance of 62.32 feet to a point;

NORTH, a distance of 19.19 feet to a point;

EAST, a distance of 20.00 feet to a point;

SOUTH, a distance of 14.85 feet to a point;

South 32°31'27" East, a distance of 11.42 feet to a point;

South 81°18'53" East, a distance of 42.36 feet to a point;

South 00°12'34" West, a distance of 58.66 feet to a point;

South 89°47'26" East, a distance of 129.07 feet to a point;

South 09°06'38" East, a distance of 54.32 feet to a point;

South 14°32'31" East, a distance of 85.66 feet to a point;

South 43°38'51" West, a distance of 26.60 feet to a point;

South 19°40'24" East, a distance of 14.40 feet to a point;

South 70°19'36" West, a distance of 20.00 feet to a point;

North 19°40'24" West, a distance of 20.00 feet to a point;

North 70°19'36" East, a distance of 8.86 feet to a point;

North 43°38'51" East, a distance of 28.47 feet to a point;

North 14°32'31" West, a distance of 80.57 feet to a point;

North 09°06'38" West, a distance of 46.30 feet to a point;

Continuing...

A drawing of even date accompanies  
this metes and bounds description.



550 Bailey Avenue • Suite 400 • Fort Worth, Texas 76107  
Tel: 817-335.1121

TEXAS REGISTERED SURVEYING FIRM NO. 10098100



11/20/2025

DATE: NOVEMBER 20, 2025

PAGE 3 OF 4  
DUNAWAY JOB NO. B008546.002

*EXHIBIT "A"*  
*ONCOR ELECTRIC DELIVERY COMPANY, L.L.C. EASEMENT*  
*A PART OF THE T. WHITE SURVEY, ABSTRACT NUMBER 1636*

PROPERTY DESCRIPTION

Continuing...

North 89°47'26" West, a distance of 130.57 feet to a point;

North 00°12'34" East, a distance of 60.03 feet to a point;

North 81°18'53" West, a distance of 43.19 feet to a point;

South 57°28'33" West, a distance of 6.31 feet to a point;

North 32°31'27" West, a distance of 5.52 feet to a point;

North 81°18'53" West, a distance of 7.09 feet to a point;

NORTH, a distance of 1.41 feet to a point;

South 89°47'44" West, a distance of 62.32 feet to a point;

North 89°46'27" West, a distance of 264.59 feet to the POINT OF BEGINNING and containing a calculated area of 8,260 square feet or 0.189 acre of land.

NOTES: The basis of bearings for this Easement is the Texas Coordinate System of 1983, North Central Zone, 4202, based upon GPS measurements, according to the GPS Reference Network.

A drawing of even date accompanies this metes and bounds description.

The metes and bounds description contained herein was compiled from information contained in recorded documents and does not reflect the results of an on the ground survey.

DUNAWAY JOB NO. B008546.002

PAGE 4 OF 4


  
Stephen R. Glosup  
Registered Professional Land Surveyor  
Texas Registration No. 5570  
srg@dunaway.com  
November 20, 2025

EXHIBIT "A"

ONCOR ELECTRIC DELIVERY  
COMPANY, L.L.C. EASEMENT

A PART OF THE T. WHITE SURVEY  
ABSTRACT NUMBER 1636

City of Fort Worth.



550 Bailey Avenue • Suite 400 • Fort Worth, Texas 76107  
Tel: 817.335.1121  
TEXAS REGISTERED SURVEYING FIRM NO. 10098100

