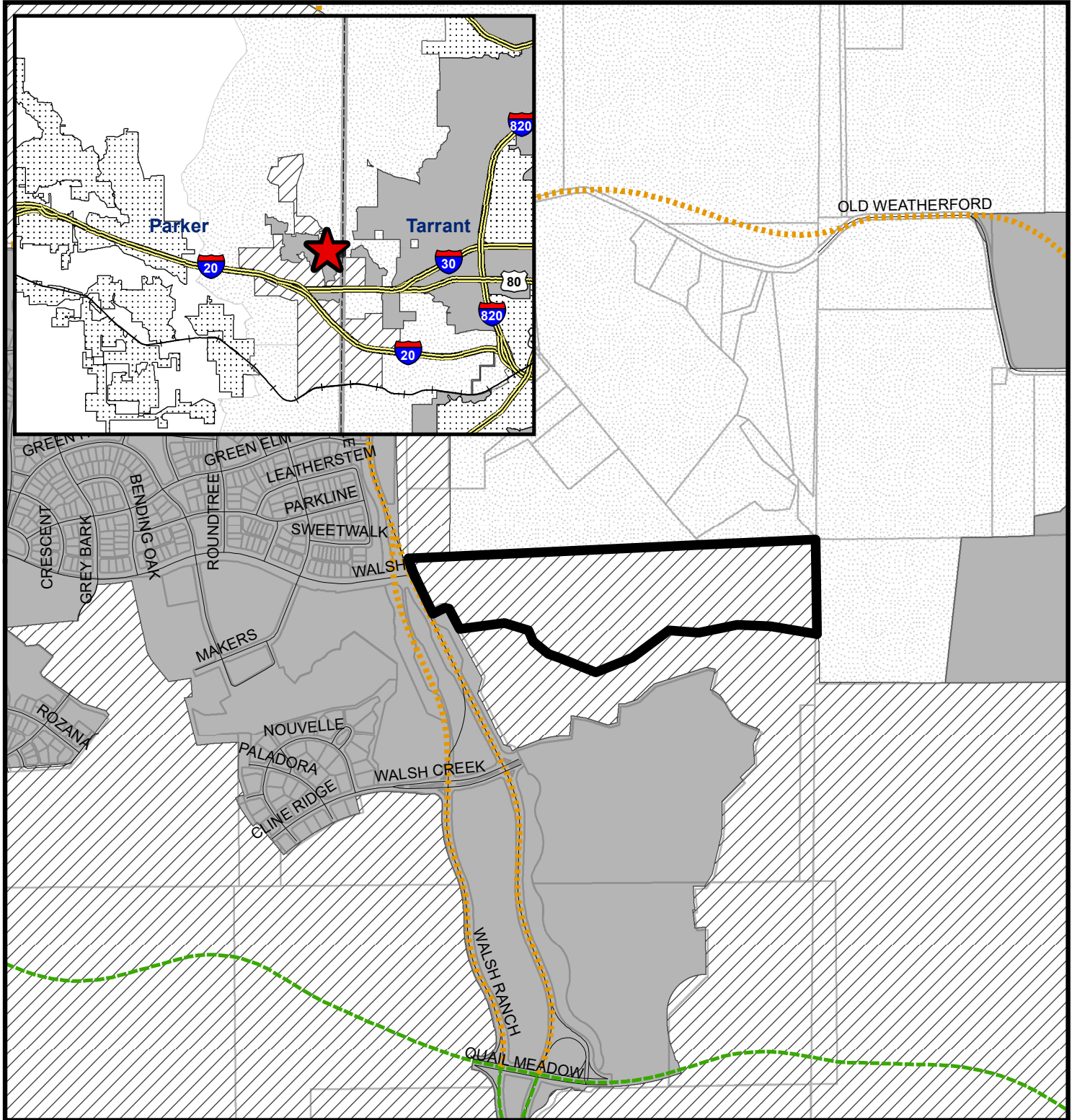


# Annexation - Walsh Ranch 3E

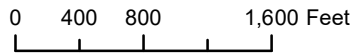
Exhibit A

Addition of approximately 60.07 Acres to become part of Council District 3



**Fort Worth**  
**DESIGNATION**

- Full Purpose
- Limited Purpose
- Extraterritorial Jurisdiction
- Adjacent Cities
- County Boundaries
- Annexation Area



1:14,400



Planning & Development Department  
2/24/2022

COPYRIGHT 2021 CITY OF FORT WORTH UNAUTHORIZED REPRODUCTION IS A VIOLATION OF APPLICABLE LAWS. THIS DATA IS TO BE USED FOR A GRAPHICAL REPRESENTATION ONLY. THE ACCURACY IS NOT TO BE TAKEN / USED AS DATA PRODUCED FOR ENGINEERING PURPOSES OR BY A REGISTERED PROFESSIONAL LAND SURVEYOR. THE CITY OF FORT WORTH ASSUMES NO RESPONSIBILITY FOR THE ACCURACY OF SAID DATA.