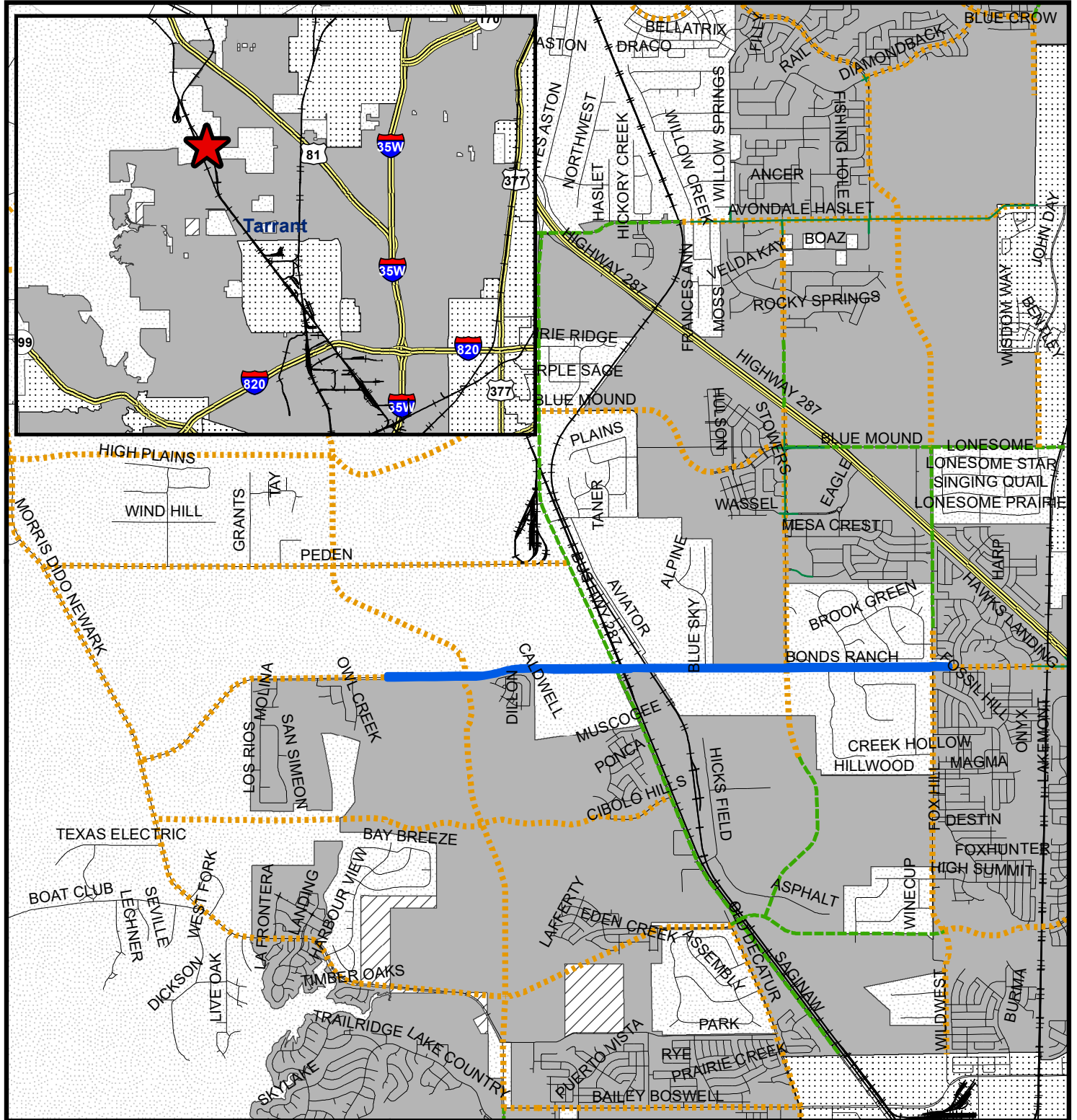


Annexation - W. Bonds Ranch Road

Exhibit A

Addition of approximately 55.305 Acres to become part of Council District 7



**Master Thoroughfare Plan
Land Use**

- Commercial Connector
- - - Neighborhood Connector
- - - System Link

**Fort Worth
DESIGNATION**

- Full Purpose
- Limited Purpose
- Extraterritorial Jurisdiction

- Railroads
- Freeways
- Streets
- Adjacent Cities
- Subject Area



Planning & Development Department
4/19/2022

COPYRIGHT 2022 CITY OF FORT WORTH UNAUTHORIZED REPRODUCTION IS A VIOLATION OF APPLICABLE LAWS. THIS DATA IS TO BE USED FOR A GRAPHICAL REPRESENTATION ONLY. THE ACCURACY IS NOT TO BE TAKEN / USED AS DATA PRODUCED FOR ENGINEERING PURPOSES OR BY A REGISTERED PROFESSIONAL LAND SURVEYOR. THE CITY OF FORT WORTH ASSUMES NO RESPONSIBILITY FOR THE ACCURACY OF SAID DATA.