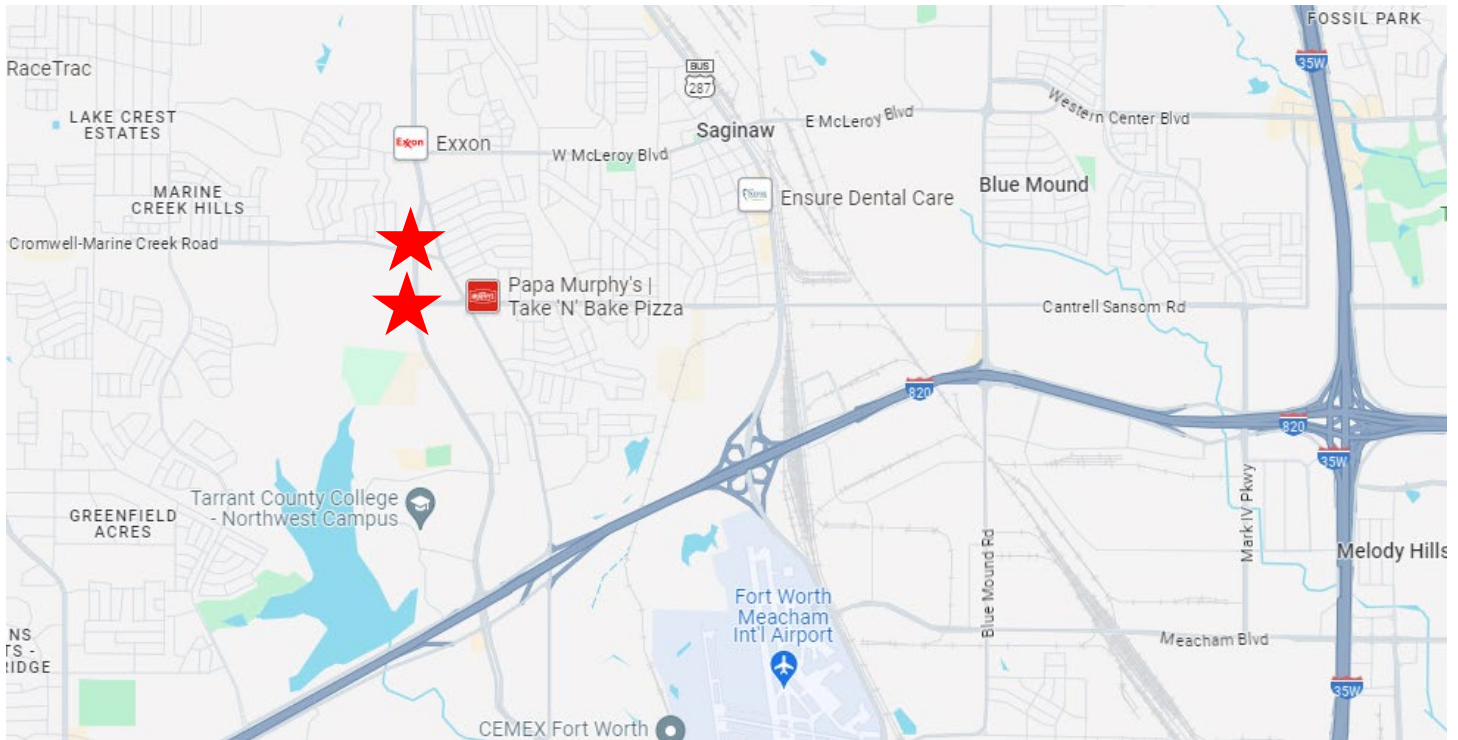


## Marine Creek Parkway Public Art Project

**Site:** Roundabouts along Marine Creek Parkway at Cromwell-Marine Creek Road and Longhorn Road



## Marine Creek Parkway Public Art Project, Curated by Iris Bechtol

### *One Way* by Leticia Bajuyo, to be located at Marine Creek Parkway at Cromwell-Marine Creek Road

#### Narrative Description

This sculptural installation titled *One Way* highlights the cyclical nature of the roundabout, of the annual growing seasons, of an academic year, and of a daily commute. This installation of twenty-four colorful metal doilies incorporates the words and arrows of the “ONE WAY” signs directing traffic around the Marine Creek roundabouts. These doilies are inspired by vortexes, star-wheel rake tractors, hay bales, and dandelions that have gone to seed. Lifted into the air at varying heights, like candles on a birthday cake, they rise vertically from the top surface of the roundabout. From two directions, this sequence of doilies creates an infinity sign. When driving around or entering the roundabout from either east or west, the doilies vanish and become lines and rows like rows of crops in a field. This brings a driver back to the next infinity sign as the roundabout guides one counterclockwise to their next destination.

To emphasize the cyclical movement, the gradation of color is reminiscent of the change of color in nature both in plants and in the sky as the earth turns in its own roundabout. The colors peacefully shift from shades of blue skies to green grass. This smooth shift from light to dark is reminiscent of a day going from sunrise to sunset to nighttime and back to sunrise. This color change guides drivers around the roundabout.

#### Final Design Images



Final Design Rendering (Northbound View)

20 ft., 3 in. (h) x 35 ft. (w) 35 ft. (d)

Painted Steel

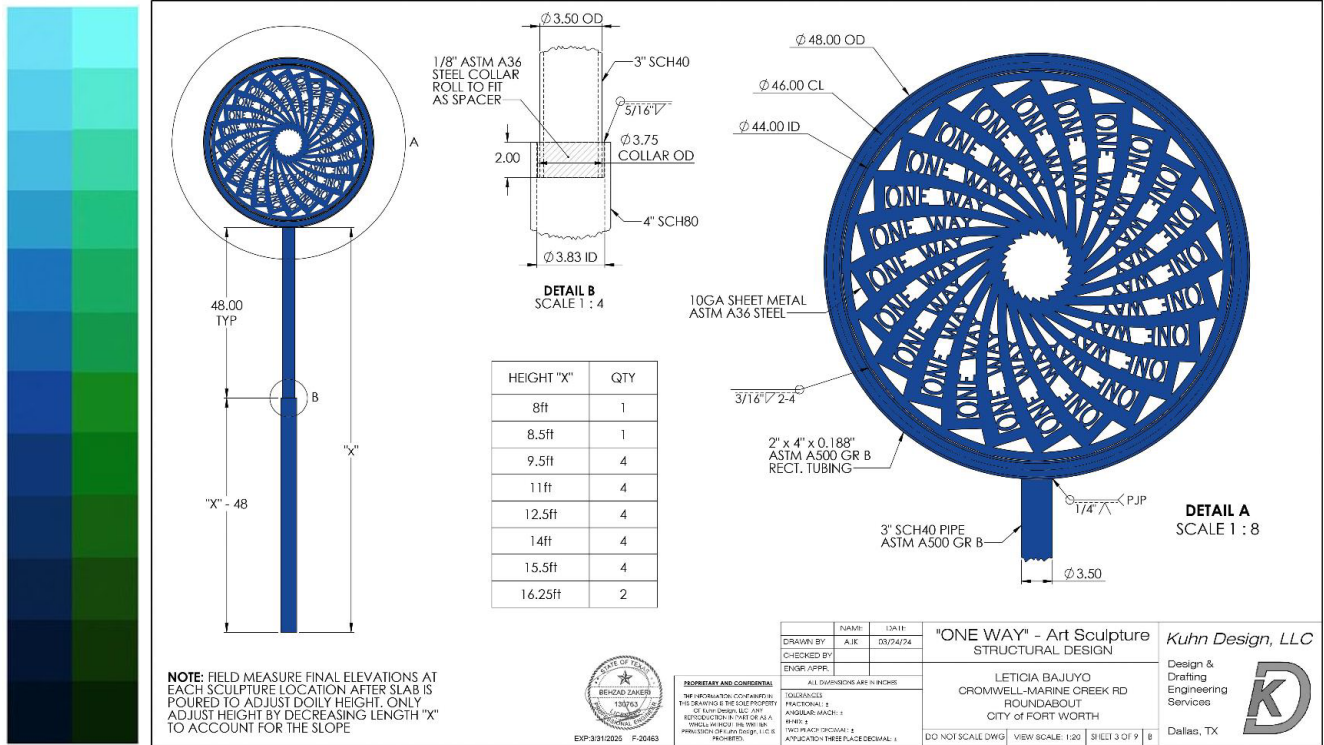




Final Design Rendering (Eastbound View)  
 20 ft., 3 in. (h) x 35 ft. (w) 35 ft. (d)  
 Painted Steel



Final Design Rendering (Southbound View)  
 20 ft., 3 in. (h) x 35 ft. (w) 35 ft. (d)  
 Painted Steel



Detail of Laser Cut Steel "One Way" Doilies  
Each 4 ft. in diameter, ranging in height from 12 ft. to 20 ft., 3 in.  
Each of the 24 doilies are assigned a unique paint color

[Marine Creek Parkway Final Design continues on next page.]

## ***A Very Long Now* by Alicia Eggert, to be located at Marine Creek Parkway at Longhorn Road**

### **Narrative Description**

The word “now” can have very different meanings when it is used in different contexts. It can refer to this very second (which has already passed), the time it will take to give this presentation (which is halfway over), this year, or this century. In our daily lives, we tend to think in short terms and see the present moment as very narrow and small. But our capacity to create a better future seems like it might depend on our collective ability to conceive of “now” in much longer terms—one that is longer or wider than our narrow fields of vision can contain. How would our behaviors change if we imagined a “now” that extends 10,000 years into the past, or 10,000 years into the future?

*A Very Long Now* encourages both living in the present *and* thinking in longer terms. There are 60 NOWs in total, which alludes to those small increments of time counted by clocks—the number of seconds in a minute and the number of minutes in an hour. Each NOW, like a brief moment in time, is so thin that it is almost non-existent when viewed from the side. Yet they all work together to create an upward-spiraling form that is greater than the sum of its parts. That form is both linear and cyclical in nature, just like the different ways we perceive and experience Time.

Some things in life are cyclical and seemingly infinite, like the path a clock’s hands travel around its face, the revolution of the earth around the sun, or the motion of a car in the roundabout. At the same time, other things are linear and finite in nature, like the hours in a day or the length of a human life. Although the path of these NOWs comes to a finite end, hovering in the air above the road, they also suggest the potential of extending and spiraling endlessly outward and upward, into a future that does not yet exist.

### **Final Design Images**



Final Design Rendering (Eastbound View)

28 ft., 10 in. (h) x 35 ft., 9 in. (w) x 25 ft., 2 in. (d)

Painted aluminum “NOWs” with steel support structure



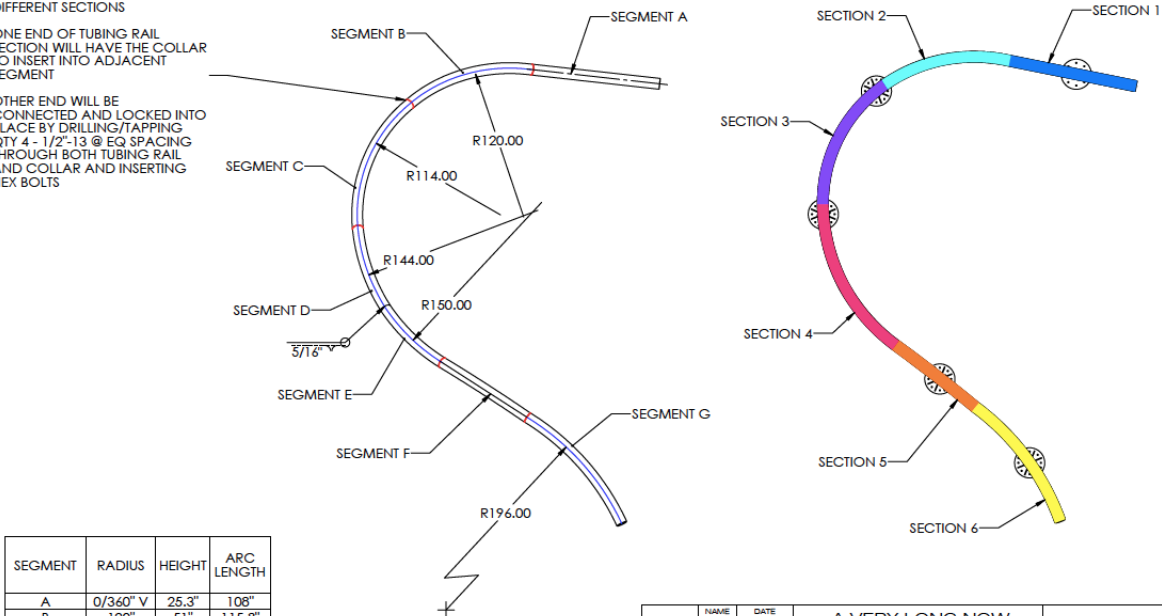


Final Design Rendering (Northbound View)  
 28 ft., 10 in. (h) x 35 ft., 9 in. (w) x 25 ft., 2 in. (d)  
 Painted aluminum "NOWs" with steel support structure

**NOTE:**  
 RED LINES IDENTIFY WHERE  
 TUBING RAIL SPLITS INTO  
 DIFFERENT SECTIONS

ONE END OF TUBING RAIL  
 SECTION WILL HAVE THE COLLAR  
 TO INSERT INTO ADJACENT  
 SEGMENT

OTHER END WILL BE  
 CONNECTED AND LOCKED INTO  
 PLACE BY DRILLING/TAPPING  
 QTY 4 - 1/2"-13 @ EQ SPACING  
 THROUGH BOTH TUBING RAIL  
 AND COLLAR AND INSERTING  
 HEX BOLTS



EXP:3/31/2025  
 F#20463

**PROFESSIONAL AND CONFIDENTIAL**  
 THE INFORMATION CONTAINED IN  
 THIS DRAWING IS THE SOLE PROPERTY  
 OF KUHN DESIGN, LLC. ANY  
 REPRODUCTION IN WHOLE OR IN  
 PART WITHOUT THE WRITTEN  
 PERMISSION OF KUHN DESIGN, LLC IS  
 PROHIBITED.

NAME	DATE
DRAWN BY: AJK	08/28/24
CHECKED BY:	
ENGR APPR:	

ALL DIMENSIONS ARE IN INCHES  
 UNLESS OTHERWISE SPECIFIED  
 TOLERANCES:  
 FRACTIONS: 1/8"  
 ANGULAR MEASURE: 1/2"  
 DECIMALS: 1/16"  
 APPLICATION THREE PLACE DECIMAL: 1

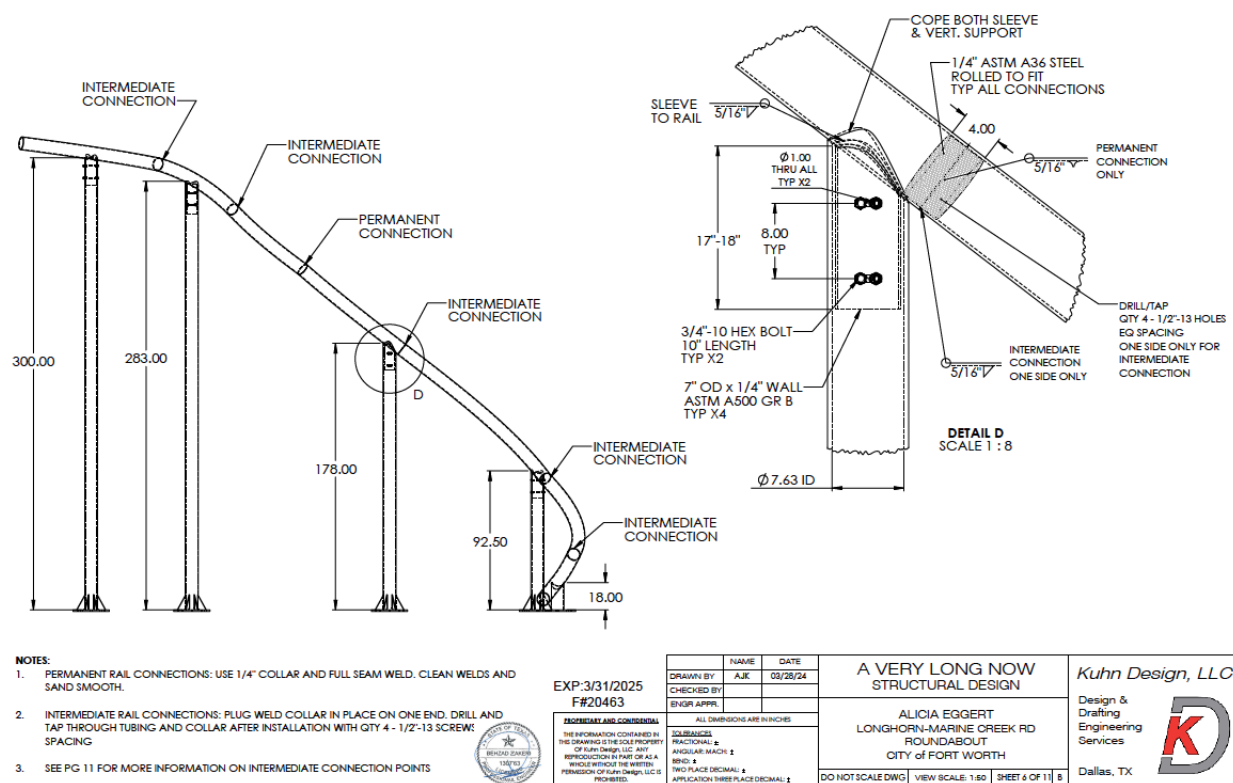
**A VERY LONG NOW  
 STRUCTURAL DESIGN**

ALICIA EGGERT  
 LONGHORN-MARINE CREEK RD  
 ROUNDABOUT  
 CITY OF FORT WORTH

DO NOT SCALE DWG VIEW SCALE: 1:60 SHEET 5 OF 11 5

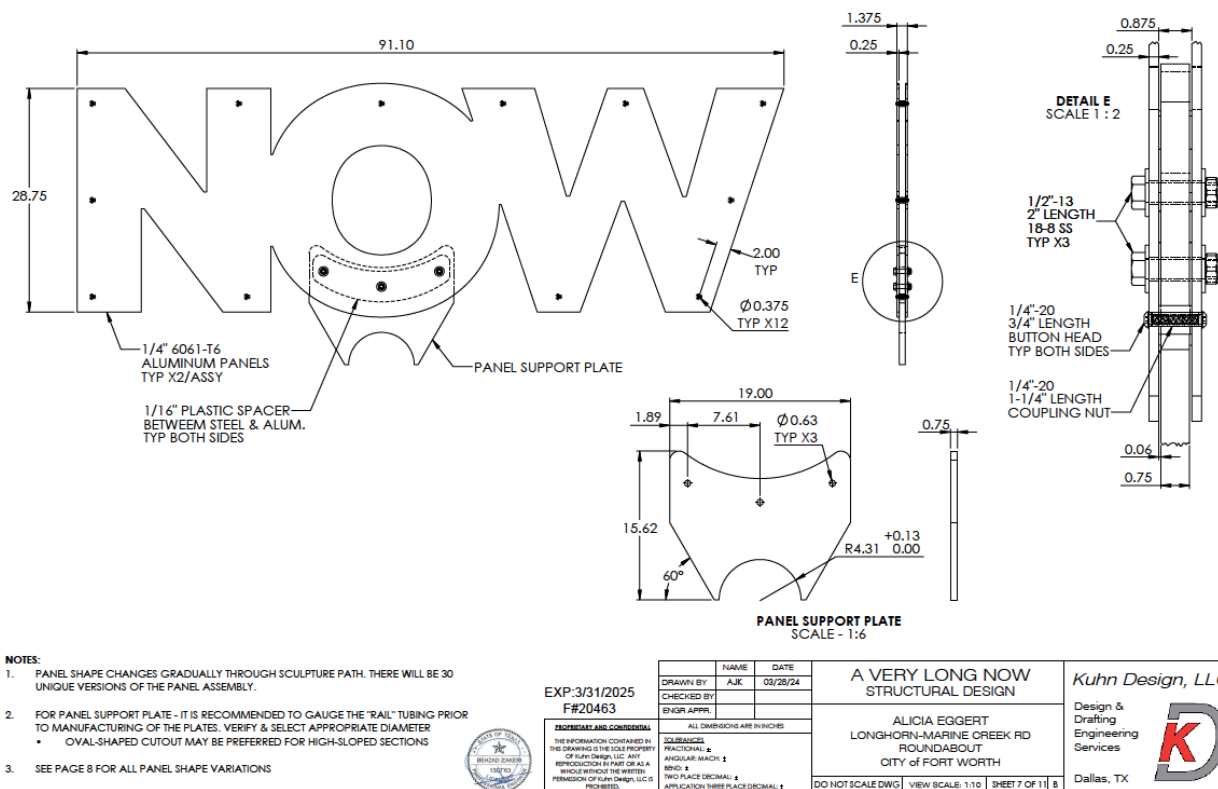
**Kuhn Design, LLC**  
 Design &  
 Drafting  
 Engineering  
 Services  
 Dallas, TX

Final Design of Support Structure  
 Bent steel rail, segmented into 5 parts



## Final Design of Support Structure

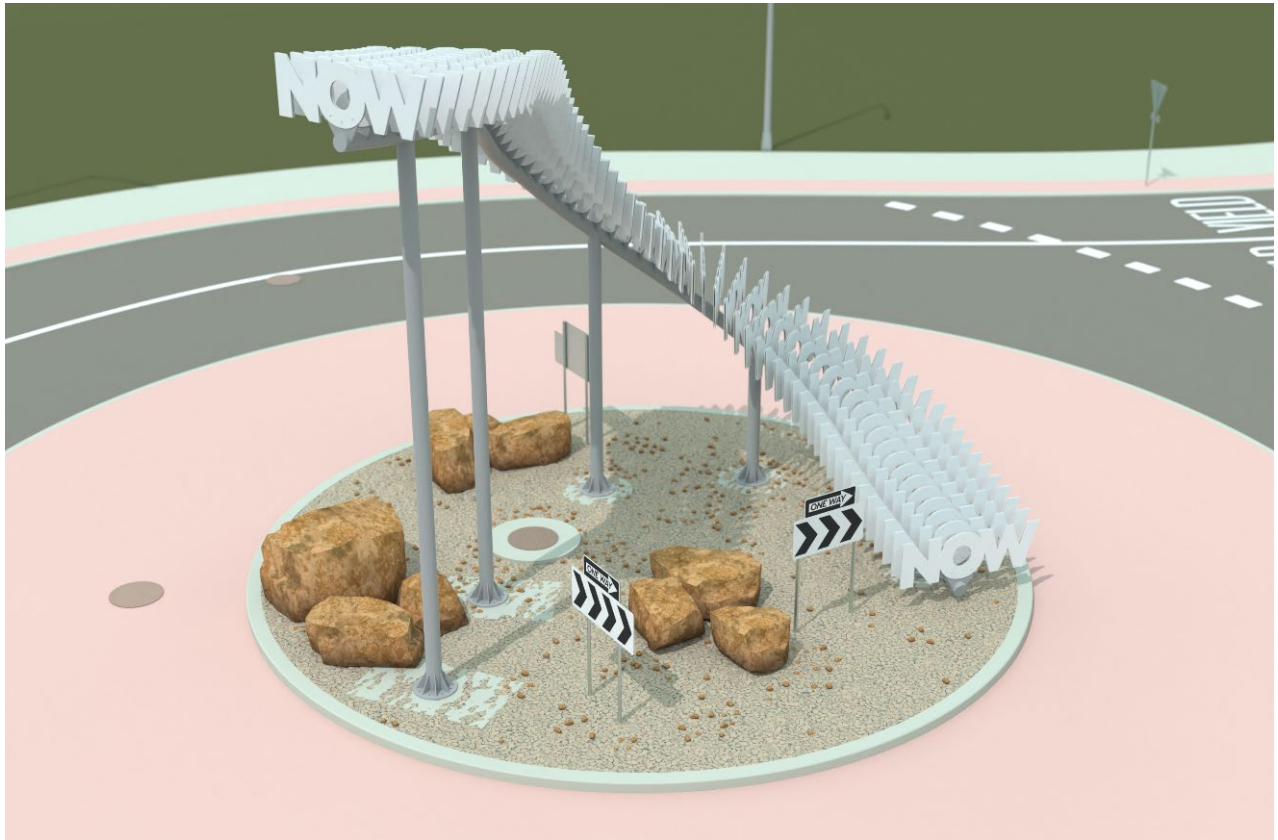
### Bent steel rail, ranging from 1 ft., 6 in. to 25 ft. in height



Detail of "NOWs"

Total of 60, each 2ft., 4in. (h) x 7 ft., 7 in. (w)

Painted Aluminum



Final Design Rendering (Aerial View)

40' diameter roundabout groundscaped with crushed limestone and return of existing boulders