

**Holly Vehicle Facility Public Art Commission Contract
M&C Attachments**

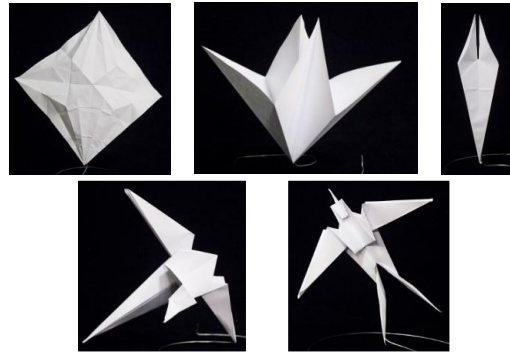
Exhibit A: Artwork Design

Narrative Description

Fort Worth artist Lynne Bowman Craven’s design for an artwork for the Municipal Vehicle Maintenance facility at the Holly Water Treatment Plant consists of a series of five sculptures, eight feet tall, that run along the east side of Forest Park Boulevard. These sculptures show the progression of folding an origami bird, designed to depict a scissor tail flycatcher, starting from a solid square all the way to a completed folded bird form. The scissor tail flycatcher’s habitat is specific to Texas, Oklahoma, parts of other the southern U.S. and Mexico and it can readily be found along the Trinity River during spring and summer.



Scissor Tailed Flycatcher



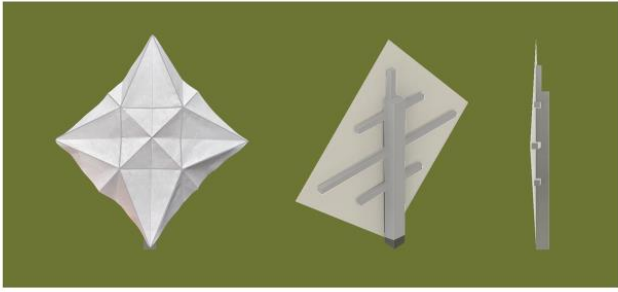
Concept Models

Final Design Images

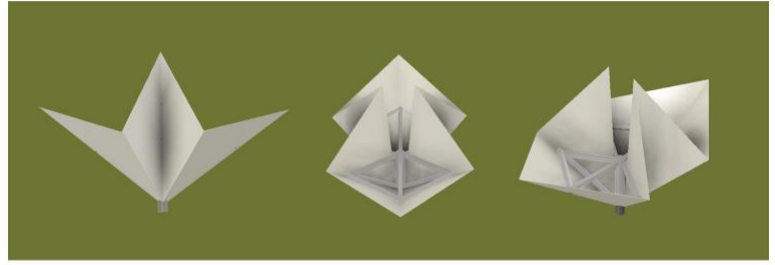
The five steps portrayed in creating the final origami form are representative of meditative spots in the folding process where one can pause and contemplate the next set of instructions. The artist chose white for this artwork so the sculptures stand out from the green grass and blue sky of their surroundings. Clean white forms along the roadway will add to the aesthetic of the area without becoming a distraction to drivers, and will accentuate the creases and folds in the sculptures.



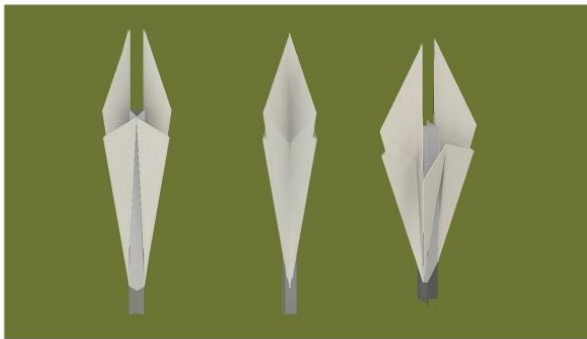
Space B: Tree #1 and Tree #2



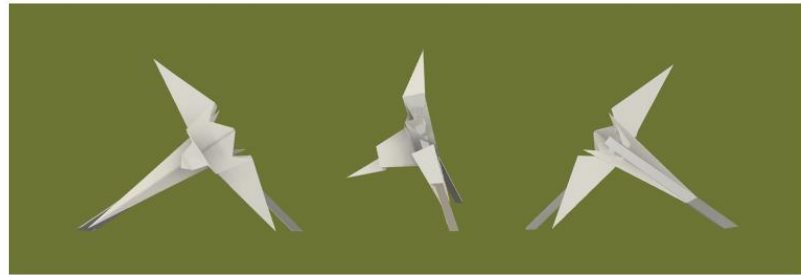
Sculpture #1



Sculpture #2



Sculpture #3



Sculpture #4



Sculpture #5

Exhibit B: The Site

Location on Forest Park Boulevard near the Municipal Vehicle Maintenance Facility in the Holly Water Treatment Plant, 2222 Daggett, 76102 (Council District 9).



Forest Park Blvd, Holly Water Treatment Plant,
Water , Sewer, and Stormwater Drains