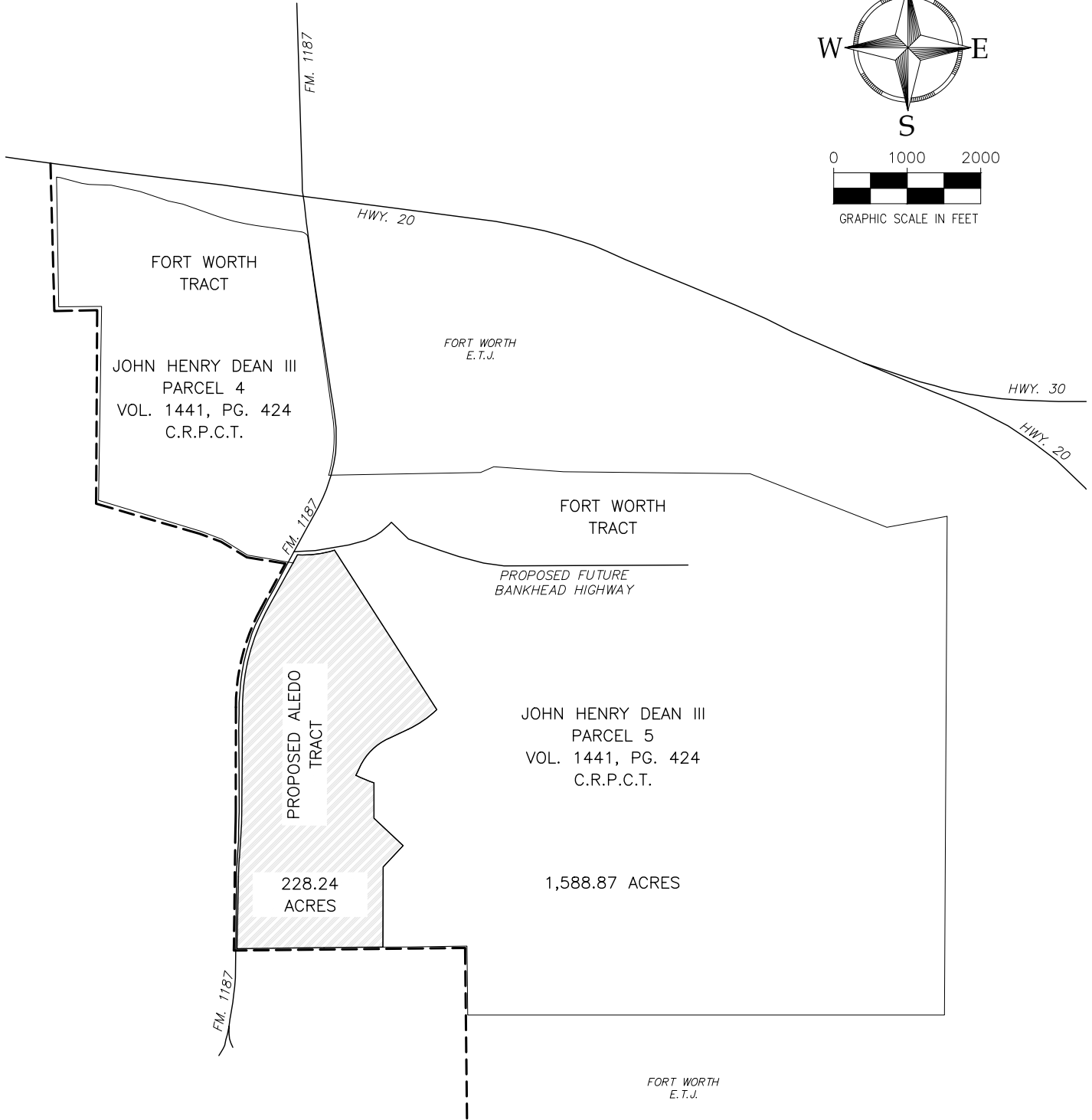
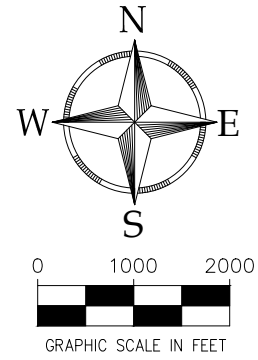


EXHIBIT A



"This document was prepared under 22 TAC 138.95, does not reflect the results of an on the ground survey, and is not to be used to convey or establish interests in real property except those rights and interests implied or established by the creation or reconfiguration of the boundary of the political subdivision for which it was prepared."

11000 FRISCO ST, SUITE 400
FRISCO, TX 75033 469-213-1800

DESCRIPTION (FORT WORTH TRACT):

BEGINNING AT THE NORTHWEST CORNER OF PRAIRIE RIDGE ESTATES, AN ADDITION TO PARKER COUNTY;

THENCE SOUTH 89°27'40" WEST, 583.34 FEET;

THENCE NORTH 00°56'40" WEST, 1763.44 FEET TO THE SOUTH LINE OF INTERSTATE 20;

THENCE WITH THE SOUTH LINE OF INTERSTATE 20 THE FOLLOWING COURSES:

SOUTH 83°20'44" EAST, 50.49 FEET;

SOUTH 75°00'38" EAST, 304.95 FEET;

SOUTH 81°21'46" EAST, 98.39 FEET;

SOUTH 88°17'04" EAST, 300.57 FEET;

SOUTH 77°42'23" EAST, 401.56 FEET;

SOUTH 71°23'14" EAST, 406.80 FEET;

SOUTH 77°58'07" EAST, 200.67 FEET;

SOUTH 70°26'15" EAST, 458.91 FEET;

WITH A CURVE TO THE LEFT HAVING A RADIUS OF 2893.79 FEET, A DELTA ANGLE OF 11°28'39", A CHORD BEARING OF SOUTH 76°14'26" EAST, AND A CHORD LENGTH OF 578.72 FEET, ALONG SAID CURVE AN ARC LENGTH OF 579.69 FEET;

SOUTH 81°59'32" EAST, 623.96 FEET;

WITH A CURVE TO THE RIGHT HAVING A RADIUS OF 121.00 FEET, A DELTA ANGLE OF 49°23'34", A CHORD BEARING OF SOUTH 56°50'45" EAST, A CHORD LENGTH OF 101.11 FEET, ALONG SAID CURVE AN ARC LENGTH OF 104.31 FEET, TO THE WEST LINE OF F.M. 1187;

THENCE WITH THE WEST LINE OF F.M. 1187 THE FOLLOWING COURSES:

SOUTH 08°14'32" EAST, 324.27 FEET;

SOUTH 07°51'40" EAST 2177.58 FEET;

WITH A CURVE TO THE RIGHT HAVING A RADIUS OF 1859.86 FEET, A DELTA ANGLE OF 24°07'46", A CHORD BEARING OF SOUTH 04°14'56" WEST, A CHORD LENGTH OF 777.48 FEET, ALONG SAID CURVE ARC LENGTH OF 783.25 FEET;

THENCE DEPARTING THE WEST LINE OF F.M. 1187, NORTH 88°59'05" EAST, 2067.00 FEET;

THENCE NORTH 66°21'56" EAST, 197.26 FEET;

THENCE SOUTH 85°53'04" EAST, 950.20 FEET;

THENCE SOUTH 89°23'04" EAST, 2536.63 FEET;

THENCE SOUTH 68°38'04" EAST, 2000.41 FEET;

THENCE NORTH 79°37'01" EAST, 833.51 FEET;

THENCE SOUTH 00°18'57" WEST, 6780.76 FEET;

THENCE WEST, 6484.80 FEET;

THENCE NORTH 00°38'41" WEST, 937.06 FEET;

THENCE SOUTH 89°08'47" WEST, 784.86 FEET;

CONTINUED ON NEXT PAGE



DESCRIPTION (FORT WORTH TRACT contd.):

THENCE SOUTH 89°31'34" WEST, 357.78 FEET;

THENCE NORTH 00°08'56" EAST, 1090.76 FEET;

THENCE NORTH 43°08'45" EAST, 397.24 FEET;

THENCE NORTH 46°51'15" WEST, 543.35 FEET;

THENCE NORTH, 478.39 FEET;

THENCE WITH A CURVE TO THE RIGHT HAVING A RADIUS OF 2474.96 FEET, A DELTA ANGLE OF 06°12'30", A CHORD BEARING OF NORTH 67°21'22" WEST, A CHORD LENGTH OF 268.04 FEET, ALONG SAID CURVE AN ARC LENGTH OF 268.17 FEET;

THENCE NORTH 25°44'52" EAST, 141.03 FEET;

THENCE WITH A CURVE TO THE RIGHT HAVING A RADIUS OF 800.00 FEET, A DELTA ANGLE OF 38°32'13", A CHORD BEARING OF NORTH 45°22'10" EAST, A CHORD LENGTH OF 527.99 FEET, ALONG SAID CURVE AN ARC LENGTH OF 538.08 FEET;

THENCE NORTH 64°38'16" EAST, 301.12 FEET;

THENCE WITH A CURVE TO THE LEFT HAVING A RADIUS OF 1500.00 FEET, A DELTA ANGLE OF 18°15'11", A CHORD BEARING OF NORTH 55°30'41" WEST, A CHORD LENGTH OF 475.85 FEET, ALONG SAID CURVE AN ARC LENGTH OF 477.87 FEET;

THENCE NORTH 32°42'27" WEST, 2574.59 FEET;

THENCE WITH A CURVE TO THE RIGHT HAVING A RADIUS OF 1443.78 FEET, A DELTA ANGLE OF 20°15'27", A CHORD BEARING OF SOUTH 82°50'57" WEST, A CHORD LENGTH OF 507.81 FEET, ALONG SAID CURVE AN ARC LENGTH OF 510.46 FEET;

THENCE SOUTH 28°58'30" WEST, 126.02 FEET;

THENCE NORTH 80°03'38" WEST, 495.02 FEET TO THE CENTER OF EAST BANKHEAD HIGHWAY;

THENCE WITH THE CENTER OF EAST BANKHEAD HIGHWAY THE FOLLOWING COURSES:

- NORTH 80°13'13" WEST, 131.81 FEET;
- NORTH 58°16'08" WEST, 406.68 FEET;
- NORTH 69°07'05" WEST, 312.26 FEET;
- NORTH 73°11'39" WEST, 1450.87 FEET;

THENCE DEPARTING EAST BANKHEAD HIGHWAY NORTH 00°53'27" EAST, 2636.23 FEET, TO THE **PLACE OF BEGINNING** AND CONTAINING 1,588.87 ACRES (69,211,256 SQUARE FEET) OF LAND, MORE OR LESS.



DESCRIPTION (PROPOSED ALEDO TRACT):

COMMENCING AT THE NORTHEAST CORNER OF ROLLING HILLS ADDITION, AND ADDITION TO THE CITY OF ALEDO, PARKER COUNTY, TEXAS;

THENCE SOUTH 89°08'47" WEST, 784.86 FEET;

THENCE SOUTH 89°31'34" WEST, 357.78 FEET TO THE POINT OF BEGINNING;

THENCE SOUTH 89°31'34" WEST, 801.47 FEET;

THENCE SOUTH 89°18'26" WEST, 1183.42 FEET TO THE EAST LINE OF F.M. 1187;

THENCE WITH THE EAST LINE OF F.M. 1187 THE FOLLOWING COURSES:

NORTH 01°11'52" EAST, 977.65 FEET;

WITH A CURVE TO THE RIGHT HAVING A RADIUS OF 5679.58 FEET, A DELTA ANGLE OF 02°36'07", A CHORD BEARING OF NORTH 02°36'22" EAST, A CHORD LENGTH OF 257.91 FEET, ALONG SAID CURVE AN ARC LENGTH OF 257.93 FEET;

NORTH 03°48'39" EAST, 291.49 FEET;

WITH CURVE TO THE LEFT HAVING A RADIUS OF 5779.58 FEET, A DELTA ANGLE OF 03°25'01", A CHORD BEARING OF NORTH 02°07'26" EAST, A CHORD LENGTH OF 344.63 FEET, ALONG SAID CURVE AN ARC LENGTH OF 344.68 FEET;

NORTH 00°25'14" EAST, 1425.38 FEET;

WITH A CURVE TO THE RIGHT HAVING A RADIUS OF 2814.79 FEET, A DELTA ANGLE OF 28°35'52", A CHORD BEARING OF NORTH 14°39'40" EAST, A CHORD LENGTH OF 1390.39 FEET, ALONG SAID CURVE AN ARC LENGTH OF 1404.93 FEET;

NORTH 28°58'30" EAST, 815.52 FEET;

THENCE DEPARTING THE EAST LINE OF F.M. 1187, WITH A CURVE TO THE LEFT HAVING A RADIUS OF 1443.78 FEET, A DELTA ANGLE OF 20°15'27", A CHORD BEARING OF NORTH 82°50'57" EAST, A CHORD LENGTH OF 507.81 FEET, ALONG SAID CURVE AN ARC LENGTH OF 510.46 FEET;

THENCE SOUTH 32°42'27" EAST, 2574.59 FEET;

THENCE WITH A CURVE TO THE RIGHT HAVING A RADIUS OF 1500.00 FEET, A DELTA ANGLE OF 18°15'11", A CHORD BEARING OF SOUTH 55°30'41" WEST, A CHORD LENGTH OF 475.85 FEET, ALONG SAID CURVE AN ARC LENGTH OF 477.87 FEET;

THENCE SOUTH 64°38'16" WEST, 301.12 FEET;

THENCE WITH A CURVE TO THE LEFT HAVING A RADIUS OF 800.00 FEET, A DELTA ANGLE OF 38°32'13", A CHORD BEARING OF SOUTH 45°22'10" WEST, A CHORD LENGTH OF 527.99 FEET, ALONG SAID CURVE AN ARC LENGTH OF 538.08 FEET;

THENCE SOUTH 25°44'52" WEST, 141.03 FEET;

CONTINUED ON NEXT PAGE



JOB #: DRH20004	DRAWN BY: DK	CHECKED BY: NAME	DATE: 6/16/2021	PAGE #: 4 OF 5
-----------------	--------------	------------------	-----------------	----------------

DESCRIPTION (PROPOSED ALEDO TRACT contd.):

THENCE WITH A CURVE TO THE LEFT HAVING A RADIUS OF 2474.96 FEET, A DELTA ANGLE OF 06°12'30", A CHORD BEARING OF SOUTH 67°21'22" EAST, A CHORD LENGTH OF 268.04 FEET, ALONG SAID CURVE AN ARC LENGTH OF 268.17 FEET;

THENCE SOUTH, 478.39 FEET;

THENCE SOUTH 46°51'15" EAST, 543.35 FEET;

THENCE SOUTH 43°08'45" WEST, 397.24 FEET;

THENCE SOUTH 00°08'56" WEST, 1090.76 FEET; TO THE **PLACE OF BEGINNING** AND CONTAINING 228.24 ACRES (9,942,300 SQUARE FEET) OF LAND, MORE OR LESS.

