

THE CITY OF FORT WORTH, TEXAS PLANS FOR THE CONSTRUCTION OF CHISHOLM TRAIL RANCH OFFSITE SANITARY SEWER MAIN

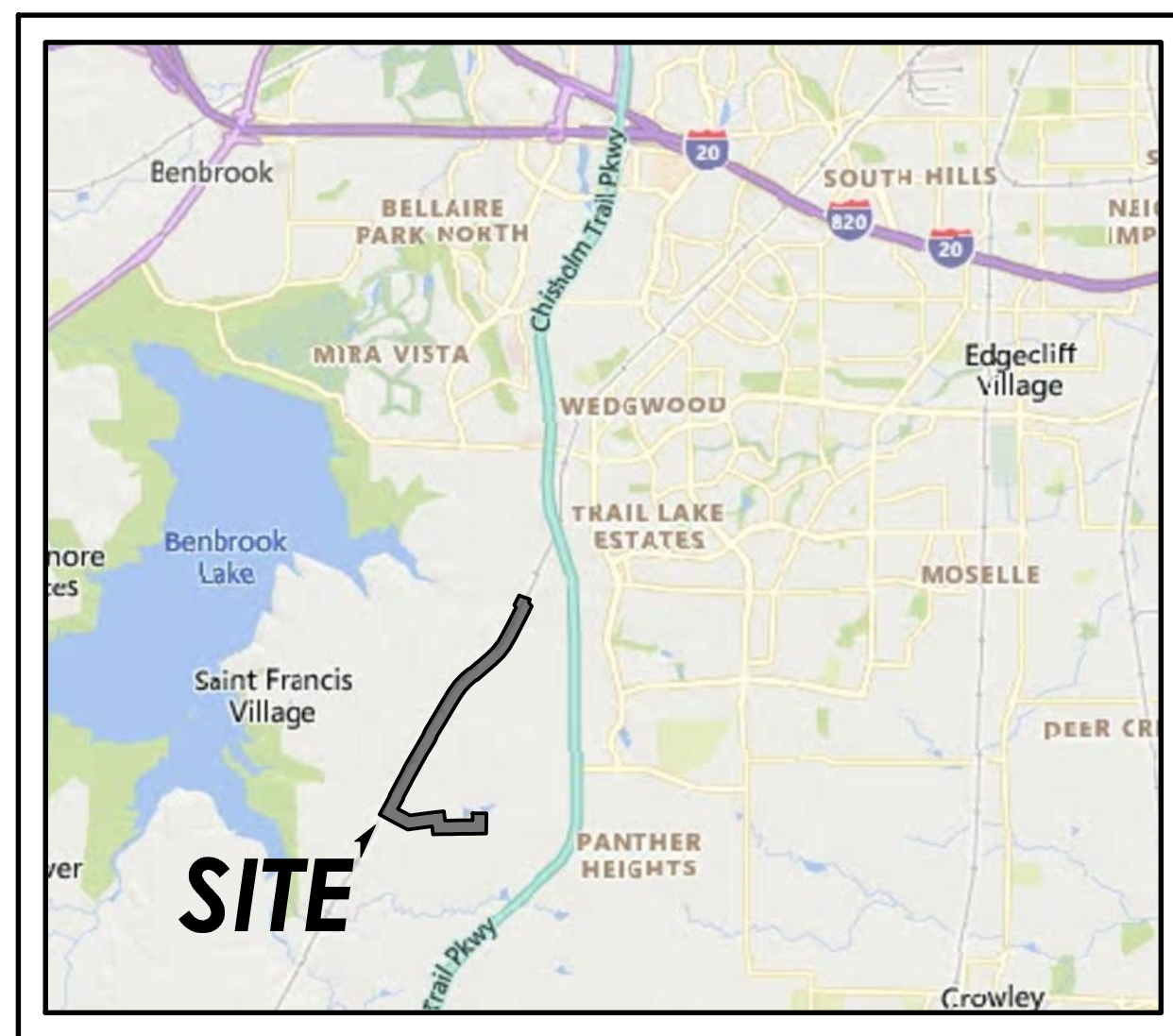
CURRENT CONSTRUCTION STANDARDS
FOR DEVELOPMENTS (10-4-2019)
SHALL GOVERN ON THIS PROJECT

MATTIE PARKER
MAYOR

DAVID COOKE
CITY MANAGER

MICHAEL OWEN, P.E.
CITY ENGINEER, TRANSPORTATION
AND PUBLIC WORKS DEPARTMENT

CHRISTOPHER P. HARDER, P.E.
DIRECTOR, WATER DEPARTMENT



VICINITY MAP

N.T.S

MAPSCO # 117 E & F

COUNCIL DISTRICT # 6

UNIT I SANITARY SEWER IMPROVEMENTS

Sheet No.	Description
1.	SANITARY SEWER & FORCE MAIN LAYOUT SHEET INDEX
2.	EASEMENT EXHIBIT
3.	S.S. LINE "OS-1" PLAN & PROFILE - Sta. 1+00.00 to 8+00.00
4.	S.S. LINE "OS-1" PLAN & PROFILE - Sta. 8+00.00 to 15+50.00
5.	S.S. LINE "OS-1" PLAN & PROFILE - Sta. 15+50.00 to 24+50.00
6.	S.S. LINE "OS-1" PLAN & PROFILE - Sta. 24+50.00 to 35+00.00
7.	S.S. LINE "OS-1" PLAN & PROFILE - Sta. 35+00.00 to 45+00.00
8.	S.S. LINE "OS-1" PLAN & PROFILE - Sta. 45+00.00 to 53+00.00
9.	S.S. LINE "OS-1" PLAN & PROFILE - Sta. 53+00.00 to 60+00.00
10.	S.S. LINE "OS-1" PLAN & PROFILE - Sta. 60+00.00 to 68+00.00
11.	S.S. LINE "OS-1" PLAN & PROFILE - Sta. 68+00.00 to 75+50.00
12.	S.S. LINE "OS-1" PLAN & PROFILE - Sta. 75+50.00 to 86+00.00
13.	S.S. LINE "OS-1" PLAN & PROFILE - Sta. 86+00.00 to 96+00.00
14.	S.S. LINE "OS-1" PLAN & PROFILE - Sta. 96+00.00 to 106+00.00
15.	S.S. LINE "OS-1" PLAN & PROFILE - Sta. 106+00.00 to 116+00.00
16.	S.S. LINE "OS-1" PLAN & PROFILE - Sta. 116+00.00 to 123+50.00
17.	S.S. LINE "OS-1" PLAN & PROFILE - Sta. 123+50.00 to 133+50.00
18.	S.S. LINE "OS-1" PLAN & PROFILE - Sta. 133+50.00 to 143+50.00
19.	S.S. LINE "OS-1" PLAN & PROFILE - Sta. 143+50.00 to 151+50.00
20.	S.S. LINE "OS-1" PLAN & PROFILE - Sta. 151+50.00 to 162+00.00
21.	S.S. LINE "OS-1" PLAN & PROFILE - Sta. 162+00.00 to 170+00.00
22.	S.S. LINE "OS-1" PLAN & PROFILE - Sta. 170+00.00 to 180+00.00
23.	S.S. LINE "OS-1" PLAN & PROFILE - Sta. 180+00.00 to 187+32.95
24.	GAS PIPELINE CROSSING NOTES
25.	CITY OF FORT WORTH GENERAL NOTES
26.	CITY OF FORT WORTH GENERAL DETAILS
27.	CITY OF FORT WORTH GENERAL DETAILS
28.	CITY OF FORT WORTH SEWER DETAILS
29.	EROSION CONTROL DETAILS
30.	TRAFFIC CONTROL DETAILS

MARCH 2022



IPRC NO. 21-0132

CITY PROJECT NO. 103610

FID NO. 30114-0200431-103610-E07685

FILE NO. N/A

DEVELOPED BY:



8840 CYPRUS WATERS BLVD., SUITE 100
DALLAS, TX 75019
(972)-580-6300

ENGINEER/SURVEYOR:



2405 Mustang Drive, Grapevine, Texas 76051
(817) 329 - 4373

DIRECTOR'S DESIGNEE FOR CONSTRUCTION _____ DATE
PLAN APPROVAL _____
RESOLUTION NO.: 01-10-2020

REVIEWED _____ DATE
PROJECT MANAGER _____

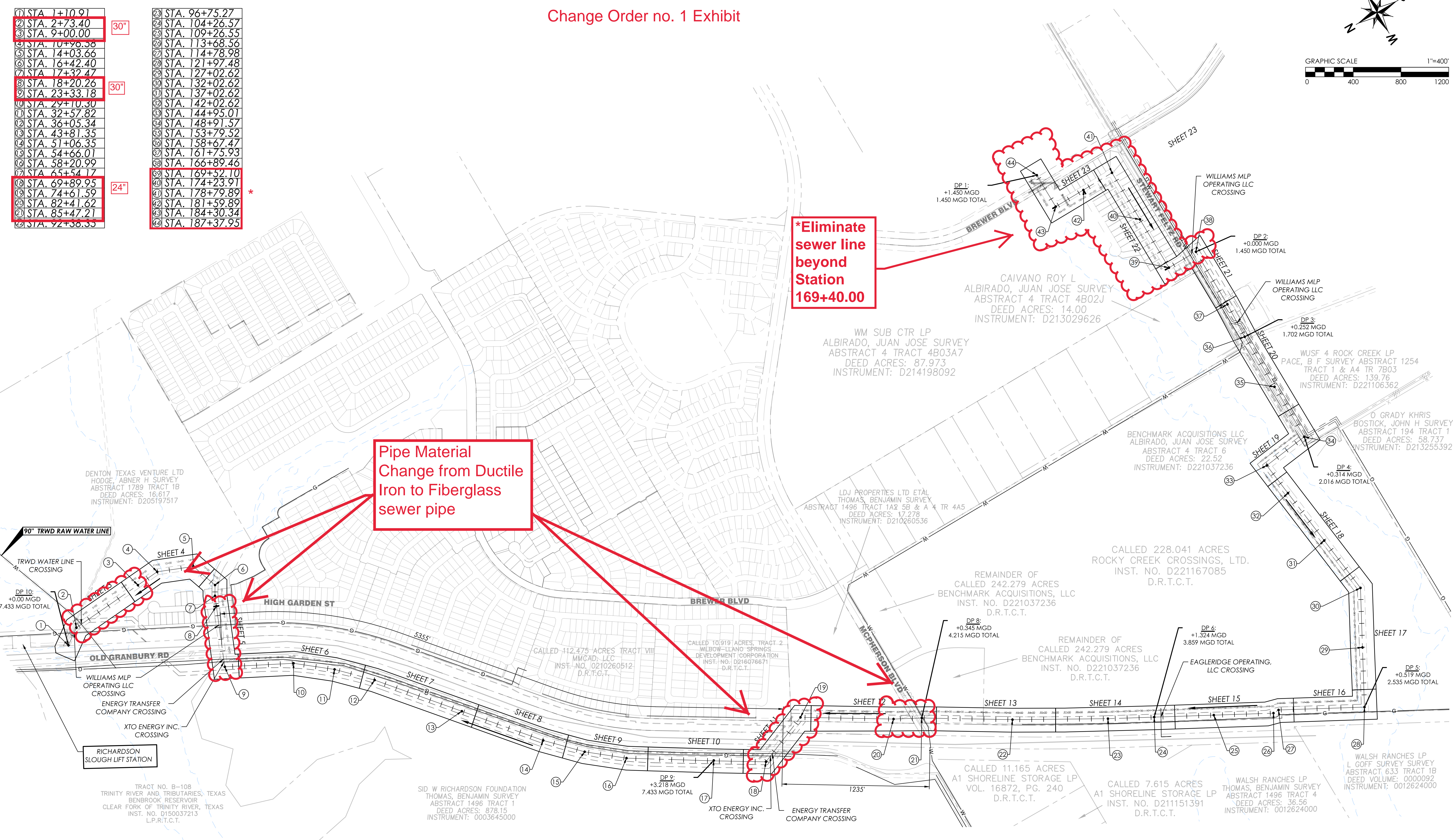
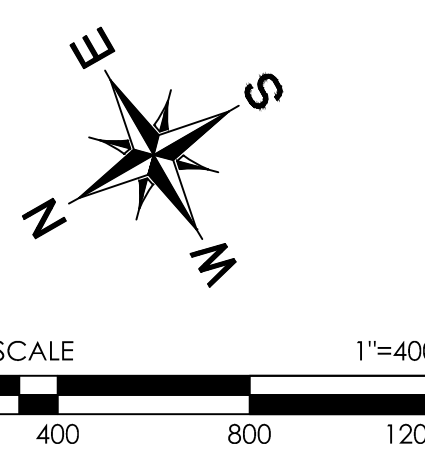
S.S. LINE "OS-1" MANHOLE STATIONING

1	STA. 1+10.91
2	STA. 2+73.40
3	STA. 9+00.00
4	STA. 10+96.38
5	STA. 14+03.66
6	STA. 16+42.40
7	STA. 17+32.47
8	STA. 18+20.26
9	STA. 23+33.18
10	STA. 29+10.30
11	STA. 32+57.82
12	STA. 36+05.34
13	STA. 43+81.35
14	STA. 51+06.35
15	STA. 54+66.01
16	STA. 58+20.99
17	STA. 65+54.17
18	STA. 69+89.95
19	STA. 74+61.59
20	STA. 82+41.62
21	STA. 85+47.21
22	STA. 92+36.33

S.S. LINE "OS-1" MANHOLE STATIONING

23	STA. 96+75.27
24	STA. 104+26.57
25	STA. 109+26.55
26	STA. 113+68.56
27	STA. 114+78.98
28	STA. 121+97.48
29	STA. 127+02.62
30	STA. 132+02.62
31	STA. 137+02.62
32	STA. 142+02.62
33	STA. 144+95.01
34	STA. 148+91.57
35	STA. 153+79.52
36	STA. 158+67.47
37	STA. 161+75.93
38	STA. 166+89.46
39	STA. 169+52.10
40	STA. 174+23.91
41	STA. 178+79.89
42	STA. 181+59.89
43	STA. 184+30.34
44	STA. 187+37.95

Change Order no. 1 Exhibit



CONTRACTOR NOTE
 THE CONTRACTOR SHALL BE RESPONSIBLE FOR LOCATING ALL UTILITIES, WHETHER PRIVATE OR PUBLIC, PRIOR TO EXCAVATING. THE INFORMATION AND DATA SHOWN WITH RESPECT TO EXISTING UNDERGROUND FACILITIES AT OR CONTIGUOUS TO THE SITE IS APPROXIMATE AND BASED ON INFORMATION AND DATA FURNISHED BY THE OWNERS OF SUCH UNDERGROUND FACILITIES OR ON PHYSICAL APPURTENANCES OBSERVED IN THE FIELD. THE OWNER AND ENGINEER SHALL NOT BE RESPONSIBLE FOR THE ACCURACY OR COMPLETENESS OF ANY SUCH INFORMATION OR DATA, AND THE CONTRACTOR SHALL HAVE FULL RESPONSIBILITY FOR REVIEWING AND CHECKING ALL SUCH INFORMATION AND DATA, FOR LOCATING ALL UNDERGROUND FACILITIES, FOR COORDINATION OF THE WORK WITH THE OWNERS OF SUCH UNDERGROUND FACILITIES DURING CONSTRUCTION, FOR THE SAFETY AND PROTECTION THEREOF, AND REPAIRING ANY DAMAGE THERE TO RESULTING FROM THE WORK. THE COST OF ALL OF WHICH WILL BE CONSIDERED AS HAVING BEEN INCLUDED IN THE CONTRACT PRICE. CONTRACTOR SHALL VERIFY LOCATION AND ELEVATION OF EXISTING UTILITIES PRIOR TO CONSTRUCTION. CONTRACTOR SHALL NOTIFY ANY AFFECTED UTILITY COMPANIES OR AGENCIES AT LEAST 48 HOURS PRIOR TO BEGINNING CONSTRUCTION.

NOTE:
 ALL DESIGN POINTS AND PROJECTED FLOWS ON THIS SHEET MATCH THOSE PROVIDED BY THE CITY OF FORT WORTH (3/24/21)

NOTE:
PRE-EXISTING MEDIANS/PARKWAYS
 ALL EXISTING MEDIANS/ROWS DISTURBED DURING CONSTRUCTION SHALL BE RETURNED TO THEIR ORIGINAL STATE OR BETTER UPON COMPLETION OF THE PROJECT. IN THE EVENT THAT GRASS HAS BEEN DISTURBED, GRASS SHALL BE ESTABLISHED AT 100% BY CONTRACTOR.
PRIOR TO SOD OR SEEDING, REMOVE ALL ROCKS GREATER THAN 1" (32 92 13-SODDING - REVISED MAY 13, 2021 OR 32 92 14-NON-NATIVE SEEDING - REVISED MAY 13, 2021).
 ALL DIRT MOUNDS SHALL BE REMOVED FROM MEDIANS/ROWS PRIOR TO SEEDING AFTER CONSTRUCTION IS COMPLETED.

BENCH MARK ELEVATION : 818.08
 "Y" CUT NEAR THE WEST END OF INLET. LOCATED IN THE SOUTH RIGHT-OF-WAY OF McPHERSON BLVD. BEING 1020 FEET EAST OF THE INTERSECTION OF McPHERSON BLVD. AND SUMMER CREEK DR.
BENCH MARK ELEVATION : 832.66
 "Y" CUT IN SIDEWALK. LOCATED IN THE SOUTH RIGHT-OF-WAY OF BARTON CREEK DR. BEING 120 FEET WEST OF THE INTERSECTION OF BARTON CREEK DR. AND WILLOW BRANCH WAY

NO.	REVISION DATE

Meritage Homes
 8840 CYPRIUS WATERS BLVD., SUITE 100
 DALLAS, TX 75019
 (972) 580-6300

CHISHOLM TRAIL RANCH
SECTION 3 - OFFSITE SEWER
 FORT WORTH, TEXAS

GOODWIN & MARSHALL
 CIVIL ENGINEERS - PLANNERS - SURVEYORS
 2405 Mustang Drive, Grapevine, Texas 76051
 (817) 226-4373
 Tel: (817) 226-4373 Fax: (817) 226-4373



JOB NO.:	10612
DATE:	2/4/22
DSGN/DRFT:	SAM/RS
REVIEW:	MJB
1 of 30	
SEWER LAYOUT SHEET INDEX	