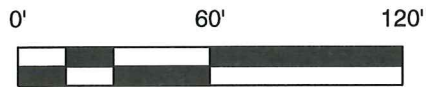


EASEMENT ABANDONMENT  
 1.038 ACRES  
 LOTS 1-3, BLOCK 1  
 RIVERFRONT LOFTS ADDITION  
 TARRANT COUNTY, TEXAS



FIRE LANE & PUBLIC ACCESS EASEMENT PER D217147861

EAST NORTHSIDE DRIVE

LOT 1, BLOCK 1



**CERTIFICATION:**

I HEREBY CERTIFY THAT THIS SURVEY HAS BEEN PREPARED FROM AN ACCURATE ON-THE-GROUND SURVEY OF THE PREMISES DEPICTED HEREON AND DESCRIBED IN THE LEGAL DESCRIPTION ATTACHED HERETO, CONDUCTED UNDER MY DIRECTION AND SUPERVISION ON 02/02/2017 AND THAT THE FINDINGS AND RESULTS OF SAID SURVEY ARE TRUE AND CORRECT TO THE BEST OF MY KNOWLEDGE AND BELIEF.

*J.E. Thompson*

J.E. THOMPSON II R.P.L.S. No 4857

FIRE LANE & PUBLIC ACCESS EASEMENT PER D217147861

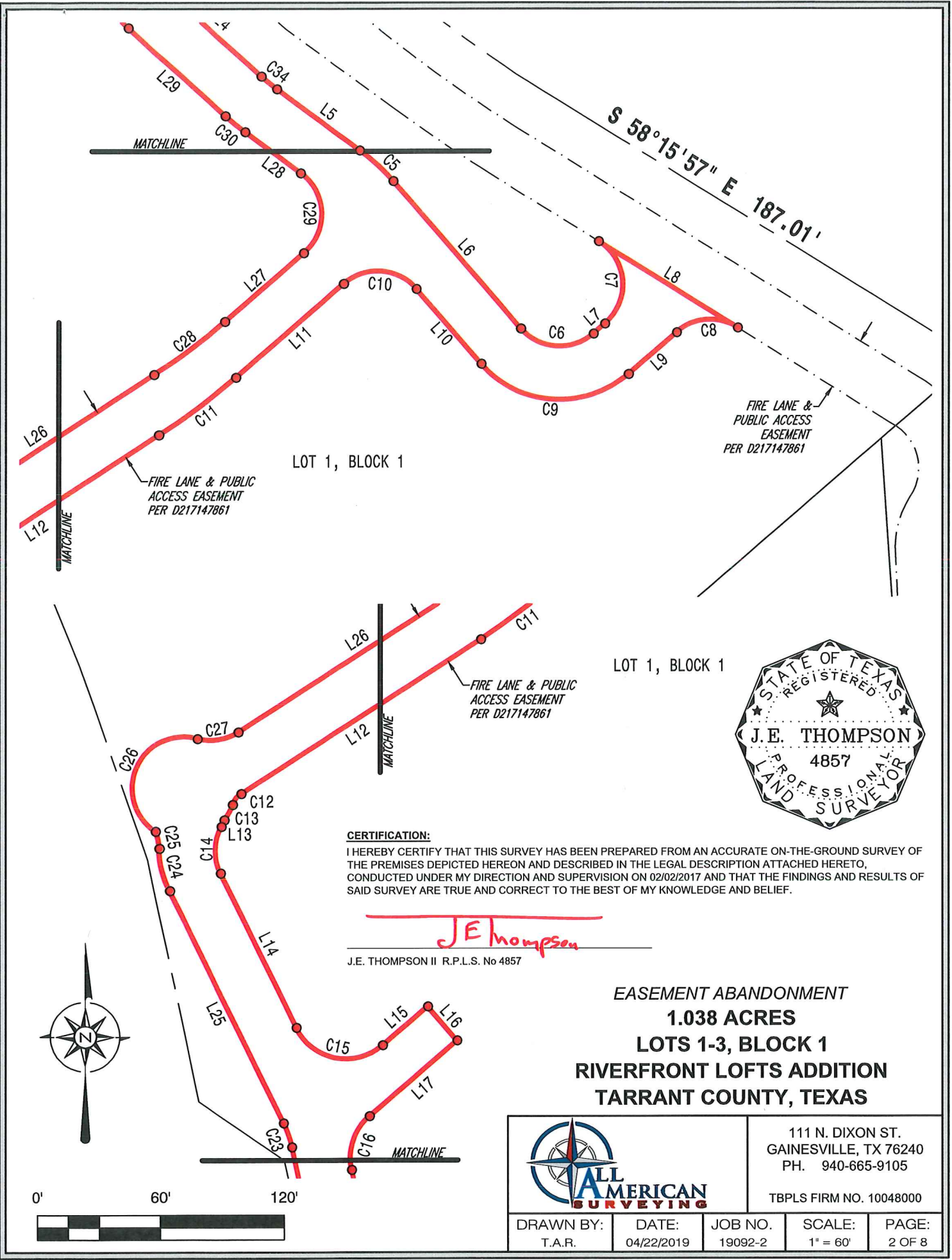
MATCHLINE



111 N. DIXON ST.  
 GAINESVILLE, TX 76240  
 PH. 940-665-9105

TBPLS FIRM NO. 10048000

DRAWN BY: T.A.R.	DATE: 04/22/2019	JOB NO. 19092-2	SCALE: 1" = 60'	PAGE: 1 OF 8
---------------------	---------------------	--------------------	--------------------	-----------------



FIRE LANE & PUBLIC ACCESS EASEMENT PER D217147861

FIRE LANE & PUBLIC ACCESS EASEMENT PER D217147861

FIRE LANE & PUBLIC ACCESS EASEMENT PER D217147861



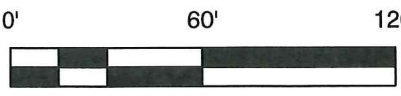
**CERTIFICATION:**

I HEREBY CERTIFY THAT THIS SURVEY HAS BEEN PREPARED FROM AN ACCURATE ON-THE-GROUND SURVEY OF THE PREMISES DEPICTED HEREON AND DESCRIBED IN THE LEGAL DESCRIPTION ATTACHED HERETO, CONDUCTED UNDER MY DIRECTION AND SUPERVISION ON 02/02/2017 AND THAT THE FINDINGS AND RESULTS OF SAID SURVEY ARE TRUE AND CORRECT TO THE BEST OF MY KNOWLEDGE AND BELIEF.

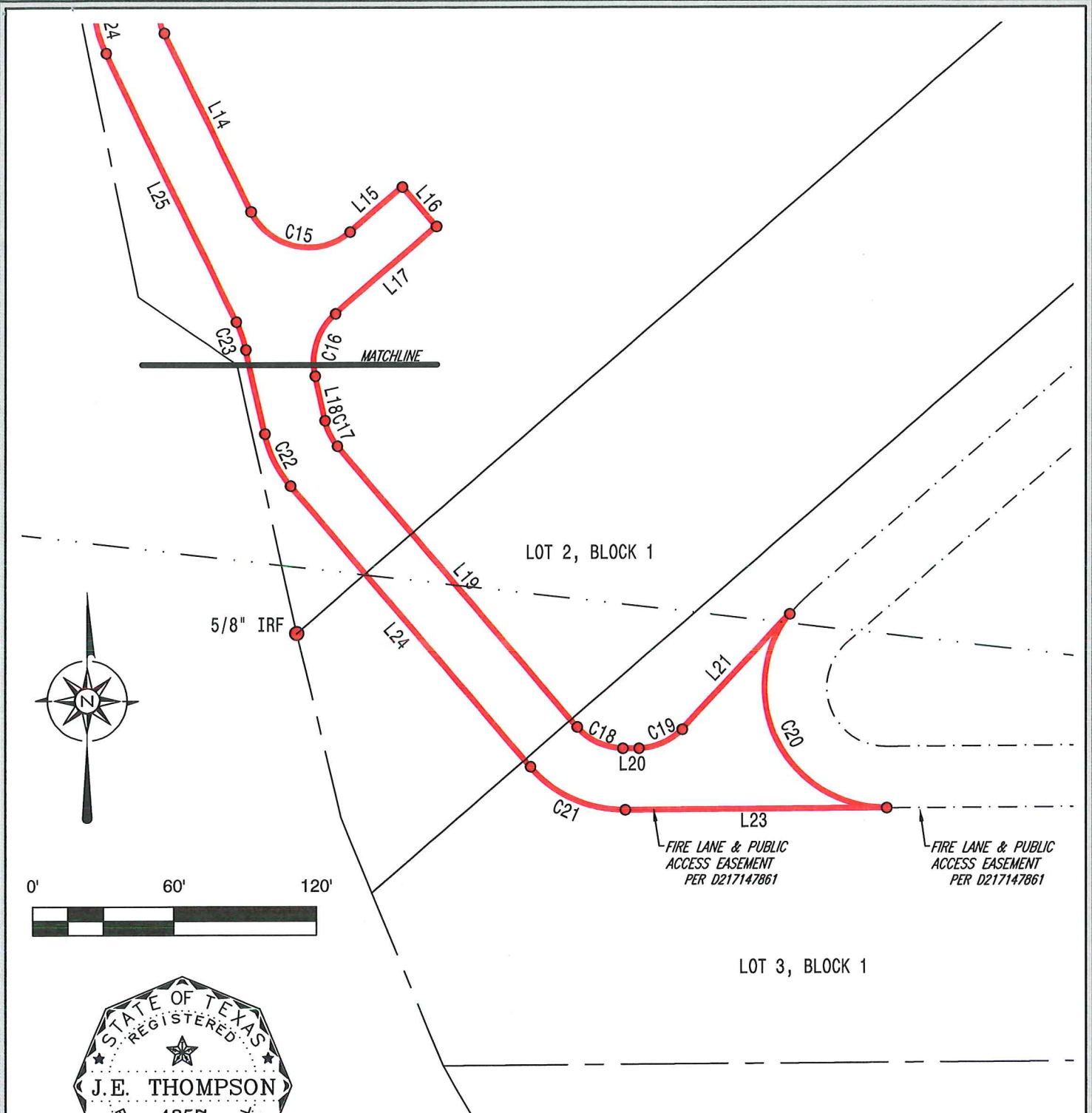
*J.E. Thompson*

J.E. THOMPSON II R.P.L.S. No 4857

**EASEMENT ABANDONMENT  
1.038 ACRES  
LOTS 1-3, BLOCK 1  
RIVERFRONT LOFTS ADDITION  
TARRANT COUNTY, TEXAS**



		111 N. DIXON ST. GAINESVILLE, TX 76240 PH. 940-665-9105		
		TBPLS FIRM NO. 10048000		
DRAWN BY: T.A.R.	DATE: 04/22/2019	JOB NO. 19092-2	SCALE: 1" = 60'	PAGE: 2 OF 8



**CERTIFICATION:**  
 I HEREBY CERTIFY THAT THIS SURVEY HAS BEEN PREPARED FROM AN ACCURATE ON-THE-GROUND SURVEY OF THE PREMISES DEPICTED HEREON AND DESCRIBED IN THE LEGAL DESCRIPTION ATTACHED HERETO, CONDUCTED UNDER MY DIRECTION AND SUPERVISION ON 02/02/2017 AND THAT THE FINDINGS AND RESULTS OF SAID SURVEY ARE TRUE AND CORRECT TO THE BEST OF MY KNOWLEDGE AND BELIEF.

*J.E. Thompson*

J.E. THOMPSON II R.P.L.S. No 4857

**EASEMENT ABANDONMENT  
 1.038 ACRES  
 LOTS 1-3, BLOCK 1  
 RIVERFRONT LOFTS ADDITION  
 TARRANT COUNTY, TEXAS**

		111 N. DIXON ST. GAINESVILLE, TX 76240 PH. 940-665-9105		
		TBPLS FIRM NO. 10048000		
DRAWN BY: T.A.R.	DATE: 04/22/2019	JOB NO.: 19092-2	SCALE: 1" = 60'	PAGE: 3 OF 8

CURVE	ARC LENGTH	RADIUS	DELTA ANGLE	CHORD BEARING	CHORD LENGTH
C1	26.01'	768.60'	1°56'20"	S 29°03'35" E	26.01'
C2	44.98'	30.00'	85°53'55"	S 19°23'45" W	40.88'
C3	22.06'	51.03'	24°45'55"	S 15°39'28" E	21.89'
C4	125.86'	163.50'	44°06'16"	S 25°19'12" E	122.77'
C5	22.07'	101.50'	12°27'25"	S 47°15'03" E	22.02'
C6	39.18'	25.00'	89°48'17"	S 85°55'29" E	35.30'
C7	46.80'	25.00'	107°14'58"	S 04°27'06" E	40.26'
C8	31.74'	25.00'	72°45'02"	N 85°32'54" E	29.65'
C9	79.94'	51.00'	89°48'17"	N 85°55'29" W	72.00'
C10	39.27'	25.00'	90°00'00"	N 86°01'20" W	35.36'
C11	46.63'	326.00'	8°11'46"	S 53°04'33" W	46.59'
C12	6.74'	10.00'	38°38'07"	S 37°51'22" W	6.62'
C13	8.63'	25.00'	19°46'31"	S 28°25'34" W	8.59'
C14	23.51'	25.00'	53°52'34"	S 00°59'54" W	22.65'
C15	49.43'	27.00'	104°53'11"	S 78°22'58" E	42.81'
C16	29.05'	27.00'	61°38'51"	S 18°21'01" W	27.67'
C17	12.19'	25.00'	27°56'22"	S 26°26'40" E	12.07'
C18	21.81'	26.00'	48°04'10"	S 64°26'56" E	21.18'
C19	20.31'	25.00'	46°32'50"	N 66°22'06" E	19.76'
C20	113.78'	51.00'	127°49'50"	S 26°26'34" E	91.61'
C21	45.33'	52.00'	49°56'36"	N 65°23'09" W	43.91'
C22	24.87'	51.00'	27°56'23"	N 26°26'39" W	24.62'
C23	12.46'	53.00'	13°27'58"	N 19°12'24" W	12.43'
C24	21.33'	49.00'	24°56'44"	N 13°28'01" W	21.17'
C25	8.58'	22.00'	22°20'53"	N 12°10'05" W	8.53'
C26	70.61'	25.00'	161°49'16"	N 23°56'54" E	49.37'
C27	20.81'	25.00'	47°41'06"	N 81°00'59" E	20.21'
C28	42.92'	300.00'	8°11'47"	N 53°04'33" E	42.88'
C29	44.71'	25.00'	102°27'25"	N 02°15'03" W	38.98'
C30	12.27'	124.50'	5°38'49"	N 50°39'21" W	12.27'
C31	145.98'	189.50'	44°08'14"	N 25°20'11" W	142.40'
C32	10.82'	25.00'	24°47'16"	N 15°39'42" W	10.73'
C33	84.98'	56.00'	86°56'29"	N 18°52'28" E	77.05'
C34	9.71'	98.50'	5°38'49"	S 50°39'21" E	9.70'

LINE	BEARING	DISTANCE
L1	S 62°20'43" W	8.51'
L2	S 27°26'57" E	121.35'
L3	S 28°02'26" E	77.25'
L4	S 47°49'57" E	63.61'
L5	S 53°28'45" E	50.24'
L6	S 41°01'20" E	95.34'
L7	N 49°10'23" E	7.44'
L8	S 58°04'35" E	79.58'
L9	S 49°10'23" W	31.04'
L10	N 41°01'20" W	48.32'
L11	S 48°58'40" W	69.43'
L12	S 57°10'26" W	138.80'
L13	S 22°41'02" W	3.50'
L14	S 25°56'23" E	83.76'
L15	N 49°10'26" E	29.01'
L16	S 40°49'34" E	22.00'
L17	S 49°10'26" W	56.36'
L18	S 12°28'25" E	19.23'
L19	S 40°26'44" E	156.16'
L20	N 89°45'26" E	6.92'
L21	N 43°05'41" E	66.77'
L23	S 89°38'30" W	110.42'
L24	N 40°26'44" W	156.16'
L25	N 25°56'23" W	126.05'
L26	N 57°10'26" E	137.71'
L27	N 48°58'40" E	50.80'
L28	N 53°28'45" W	33.76'
L29	N 47°49'57" W	63.71'
L30	N 28°02'26" W	77.38'
L31	N 27°26'57" W	122.24'
L32	N 62°20'43" E	7.87'



**CERTIFICATION:**

I HEREBY CERTIFY THAT THIS SURVEY HAS BEEN PREPARED FROM AN ACCURATE ON-THE-GROUND SURVEY OF THE PREMISES DEPICTED HEREON AND DESCRIBED IN THE LEGAL DESCRIPTION ATTACHED HERETO, CONDUCTED UNDER MY DIRECTION AND SUPERVISION ON 02/02/2017 AND THAT THE FINDINGS AND RESULTS OF SAID SURVEY ARE TRUE AND CORRECT TO THE BEST OF MY KNOWLEDGE AND BELIEF.

*J.E. Thompson*

J.E. THOMPSON II R.P.L.S. No 4857

**EASEMENT ABANDONMENT  
1.038 ACRES  
LOTS 1-3, BLOCK 1  
RIVERFRONT LOFTS ADDITION  
TARRANT COUNTY, TEXAS**

	111 N. DIXON ST. GAINESVILLE, TX 76240 PH. 940-665-9105			
	TBPLS FIRM NO. 10048000			
DRAWN BY: T.A.R.	DATE: 04/22/2019	JOB NO. 19092-2	SCALE: 1" = 60'	PAGE: 4 OF 8

FIELD NOTES TO ALL THAT CERTAIN TRACT OR PARCEL OF LAND SITUATED IN THE W. WHEAT SURVEY, ABSTRACT NUMBER 1647, AND THE W. LITTLE SURVEY, ABSTRACT NUMBER 945, TARRANT COUNTY, TEXAS, BEING A PART OF LOTS 1, 2, AND 3, BLOCK 1, RIVERFRONT LOFTS ADDITION, AS SHOWN ON THE PLAT THEREOF RECORDED IN DOCUMENT NUMBER D217147861 OF THE DEED RECORDS OF TARRANT COUNTY, TEXAS, AND BEING MORE PARTICULARLY DESCRIBED AS FOLLOWS:

BEGINNING AT A POINT FOR CORNER IN THE SOUTHERN RIGHT-OF-WAY LINE OF NORTHSIDE DRIVE IN THE NORTHEAST LINE OF SAID LOT 1, FROM WHICH THE NORTHERNMOST CORNER OF SAID LOT 1 BEARS NORTH 32 DEGREES 12 MINUTES 00 SECONDS EAST, A DISTANCE OF 58.23 FEET, SAID POINT BEING IN A CURVE TO THE RIGHT;

THENCE WITH SAID RIGHT-OF-WAY LINE AND THE NORTHEAST LINE OF LOT 1, WITH SAID CURVE HAVING A RADIUS OF 768.60 FEET, AN ARC LENGTH OF 26.01 FEET, A DELTA ANGLE OF 1 DEGREE 56 MINUTES 20 SECONDS, AND A CHORD WHICH BEARS SOUTH 29 DEGREES 03 MINUTES 32 SECONDS EAST, A DISTANCE OF 26.01 FEET TO A POINT FOR CORNER;

THENCE CROSSING SAID LOT 1 THE FOLLOWING THIRTY-FIVE (35) CALLS:

SOUTH 62 DEGREES 20 MINUTES 43 SECONDS WEST, A DISTANCE OF 8.51 FEET TO A POINT FOR CORNER AT THE BEGINNING OF A CURVE TO THE LEFT;

WITH SAID CURVE TO THE LEFT HAVING A RADIUS OF 30.00 FEET, AN ARC LENGTH OF 44.98 FEET, A DELTA ANGLE OF 85 DEGREES 53 MINUTES 55 SECONDS, AND A CHORD WHICH BEARS SOUTH 19 DEGREES 23 MINUTES 45 SECONDS WEST, A DISTANCE OF 40.88 FEET TO A POINT FOR CORNER;

NORTH 27 DEGREES 26 MINUTES 57 SECONDS WEST, A DISTANCE OF 121.35 FEET TO A POINT FOR CORNER;

SOUTH 28 DEGREES 02 MINUTES 26 SECONDS WEST, A DISTANCE OF 77.25 FEET TO A POINT FOR CORNER AT THE BEGINNING OF A CURVE TO THE RIGHT;

WITH SAID CURVE TO THE RIGHT HAVING A RADIUS OF 51.03 FEET, AN ARC LENGTH OF 22.06 FEET, A DELTA ANGLE OF 24 DEGREES 43 MINUTES 55 SECONDS, AND A CHORD WHICH BEARS SOUTH 15 DEGREES 39 MINUTES 28 SECONDS EAST, A DISTANCE OF 21.89 FEET TO A POINT FOR CORNER AT THE BEGINNING OF A CURVE TO THE LEFT;

WITH SAID CURVE TO THE LEFT HAVING A RADIUS OF 163.50 FEET, AN ARC LENGTH OF 125.86 FEET, A DELTA ANGLE OF 44 DEGREES 06 MINUTES 16 SECONDS, AND A CHORD WHICH BEARS SOUTH 25 DEGREES 19 MINUTES 12 SECONDS EAST, A DISTANCE OF 122.77 FEET TO A POINT FOR CORNER;

SOUTH 47 DEGREES 49 MINUTES 57 SECONDS EAST, A DISTANCE OF 63.61 FEET TO A POINT FOR CORNER AT THE BEGINNING OF A CURVE TO THE LEFT;

WITH SAID CURVE TO THE LEFT HAVING A RADIUS OF 98.50 FEET, AN ARC LENGTH OF 9.71 FEET, A DELTA ANGLE OF 5 DEGREES 38 MINUTES 49 SECONDS, AND A CHORD WHICH BEARS SOUTH 50 DEGREES 39 MINUTES 21 SECONDS EAST, A DISTANCE OF 9.70 FEET TO A POINT FOR CORNER;

SOUTH 53 DEGREES 28 MINUTES 45 SECONDS EAST, A DISTANCE OF 50.24 FEET TO A POINT FOR CORNER AT THE BEGINNING OF A CURVE TO THE RIGHT;

WITH SAID CURVE TO THE LEFT HAVING A RADIUS OF 101.50 FEET, AN ARC LENGTH OF 22.07 FEET, A DELTA ANGLE OF 12 DEGREES 27 MINUTES 25 SECONDS, AND A CHORD WHICH BEARS SOUTH 47 DEGREES 15 MINUTES 03 SECONDS EAST, A DISTANCE OF 22.02 FEET TO A POINT FOR CORNER;

SOUTH 41 DEGREES 01 MINUTE 20 SECONDS WEST, A DISTANCE OF 95.34 FEET TO A POINT FOR CORNER AT THE BEGINNING OF A CURVE TO THE LEFT;

WITH SAID CURVE TO THE LEFT HAVING A RADIUS OF 25.00 FEET, AN ARC LENGTH OF 39.18 FEET, A DELTA ANGLE OF 89 DEGREES 48 MINUTES 17 SECONDS, AND A CHORD WHICH BEARS SOUTH 85 DEGREES 55 MINUTES 29 SECONDS EAST, A DISTANCE OF 35.30 FEET TO A POINT FOR CORNER;

NORTH 49 DEGREES 10 MINUTES 23 SECONDS EAST, A DISTANCE OF 7.44 FEET TO A POINT FOR CORNER AT THE BEGINNING OF A CURVE TO THE LEFT;

WITH SAID CURVE TO THE LEFT HAVING A RADIUS OF 25.00 FEET, AN ARC LENGTH OF 46.80 FEET, A DELTA ANGLE OF 107 DEGREES 14 MINUTES 58 SECONDS, AND A CHORD WHICH BEARS NORTH 04 DEGREES 27 MINUTES 06 SECONDS EAST, A DISTANCE OF 40.26 FEET TO A POINT FOR CORNER;

SOUTH 58 DEGREES 04 MINUTES 35 SECONDS EAST, A DISTANCE OF 79.58 FEET TO A POINT FOR CORNER AT THE BEGINNING OF A CURVE TO THE LEFT;

WITH SAID CURVE TO THE LEFT HAVING A RADIUS OF 25.00 FEET, AN ARC LENGTH OF 31.74 FEET, A DELTA ANGLE OF 72 DEGREES 45 MINUTES 02 SECONDS, AND A CHORD WHICH BEARS SOUTH 85 DEGREES 32 MINUTES 54 SECONDS WEST, A DISTANCE OF 29.65 FEET TO A POINT FOR CORNER;




**CERTIFICATION:**

I HEREBY CERTIFY THAT THIS SURVEY HAS BEEN PREPARED FROM AN ACCURATE ON-THE-GROUND SURVEY OF THE PREMISES DEPICTED HEREON AND DESCRIBED IN THE LEGAL DESCRIPTION ATTACHED HERETO, CONDUCTED UNDER MY DIRECTION AND SUPERVISION ON 02/02/2017 AND THAT THE FINDINGS AND RESULTS OF SAID SURVEY ARE TRUE AND CORRECT TO THE BEST OF MY KNOWLEDGE AND BELIEF.

*J.E. Thompson*

J.E. THOMPSON II R.P.L.S. No 4857

**EASEMENT ABANDONMENT  
1.038 ACRES  
LOTS 1-3, BLOCK 1  
RIVERFRONT LOFTS ADDITION  
TARRANT COUNTY, TEXAS**

		111 N. DIXON ST. GAINESVILLE, TX 76240 PH. 940-665-9105		
		TBPLS FIRM NO. 10048000		
DRAWN BY: T.A.R.	DATE: 04/22/2019	JOB NO. 19092-2	SCALE: 1" = 60'	PAGE: 5 OF 8

SOUTH 49 DEGREES 10 MINUTES 23 SECONDS WEST, A DISTANCE OF 31.04 FEET TO A POINT FOR CORNER AT THE BEGINNING OF A CURVE TO THE RIGHT;

WITH SAID CURVE TO THE RIGHT HAVING A RADIUS OF 51.00 FEET, AN ARC LENGTH OF 79.94 FEET, A DELTA ANGLE OF 89 DEGREES 48 MINUTES 17 SECONDS, AND A CHORD WHICH BEARS NORTH 85 DEGREES 55 MINUTES 29 SECONDS EAST, A DISTANCE OF 72.00 FEET TO A POINT FOR CORNER;

NORTH 41 DEGREES 01 MINUTE 20 SECONDS WEST, A DISTANCE OF 48.32 FEET TO A POINT FOR CORNER AT THE BEGINNING OF A CURVE TO THE LEFT;

WITH SAID CURVE TO THE LEFT HAVING A RADIUS OF 25.00 FEET, AN ARC LENGTH OF 39.27 FEET, A DELTA ANGLE OF 90 DEGREES 0 MINUTES 0 SECONDS, AND A CHORD WHICH BEARS NORTH 86 DEGREES 01 MINUTE 20 SECONDS EAST, A DISTANCE OF 35.36 FEET TO A POINT FOR CORNER;

SOUTH 48 DEGREES 58 MINUTES 40 SECONDS WEST, A DISTANCE OF 69.43 FEET TO A POINT FOR CORNER AT THE BEGINNING OF A CURVE TO THE RIGHT;

WITH SAID CURVE TO THE RIGHT HAVING A RADIUS OF 326.00 FEET, AN ARC LENGTH OF 46.63 FEET, A DELTA ANGLE OF 8 DEGREES 11 MINUTES 46 SECONDS, AND A CHORD WHICH BEARS SOUTH 53 DEGREES 04 MINUTES 33 SECONDS WEST, A DISTANCE OF 46.59 FEET TO A POINT FOR CORNER;

SOUTH 57 DEGREES 10 MINUTES 26 SECONDS EAST, A DISTANCE OF 138.80 FEET TO A POINT FOR CORNER AT THE BEGINNING OF A CURVE TO THE LEFT;

WITH SAID CURVE TO THE LEFT HAVING A RADIUS OF 10.00 FEET, AN ARC LENGTH OF 6.74 FEET, A DELTA ANGLE OF 38 DEGREES 38 MINUTES 07 SECONDS, AND A CHORD WHICH BEARS NORTH 37 DEGREES 51 MINUTES 22 SECONDS WEST, A DISTANCE OF 6.62 FEET TO A POINT FOR CORNER AT THE BEGINNING OF A CURVE TO THE RIGHT;

WITH SAID CURVE TO THE RIGHT HAVING A RADIUS OF 25.00 FEET, AN ARC LENGTH OF 8.63 FEET, A DELTA ANGLE OF 19 DEGREES 46 MINUTES 31 SECONDS, AND A CHORD WHICH BEARS SOUTH 28 DEGREES 25 MINUTES 34 SECONDS WEST, A DISTANCE OF 8.59 FEET TO A POINT FOR CORNER;

SOUTH 22 DEGREES 41 MINUTES 02 SECONDS WEST, A DISTANCE OF 3.50 FEET TO A POINT FOR CORNER AT THE BEGINNING OF A CURVE TO THE LEFT;

WITH SAID CURVE TO THE LEFT HAVING A RADIUS OF 25.00 FEET, AN ARC LENGTH OF 23.51 FEET, A DELTA ANGLE OF 53 DEGREES 52 MINUTES 34 SECONDS, AND A CHORD WHICH BEARS SOUTH 00 DEGREES 59 MINUTES 54 SECONDS EAST, A DISTANCE OF 22.65 FEET TO A POINT FOR CORNER;

SOUTH 25 DEGREES 56 MINUTES 23 SECONDS, A DISTANCE OF 83.76 FEET TO A POINT FOR CORNER AT THE BEGINNING OF A CURVE TO THE LEFT;

WITH SAID CURVE TO THE LEFT HAVING A RADIUS OF 27.00 FEET, AN ARC LENGTH OF 49.43 FEET, A DELTA ANGLE OF 104 DEGREES 53 MINUTES 11 SECONDS, AND A CHORD WHICH BEARS SOUTH 78 DEGREES 22 MINUTES 58 SECONDS EAST, A DISTANCE OF 42.81 FEET TO A POINT FOR CORNER;

NORTH 49 DEGREES 10 MINUTES 26 SECONDS EAST, A DISTANCE OF 29.01 FEET TO A POINT FOR CORNER;

SOUTH 40 DEGREES 49 MINUTES 34 SECONDS EAST, A DISTANCE OF 22.00 FEET TO A POINT FOR CORNER;

SOUTH 49 DEGREES 10 MINUTES 29 SECONDS WEST, A DISTANCE OF 56.36 FEET TO A POINT FOR CORNER AT THE BEGINNING OF A CURVE TO THE LEFT;

WITH SAID CURVE TO THE LEFT HAVING A RADIUS OF 27.00 FEET, AN ARC LENGTH OF 29.05 FEET, A DELTA ANGLE OF 61 DEGREES 38 MINUTES 51 SECONDS, AND A CHORD WHICH BEARS SOUTH 18 DEGREES 21 MINUTES 01 SECOND WEST, A DISTANCE OF 27.67 FEET TO A POINT FOR CORNER;

SOUTH 12 DEGREES 28 MINUTES 25 SECONDS WEST, A DISTANCE OF 19.23 FEET TO A POINT FOR CORNER AT THE BEGINNING OF A CURVE TO THE LEFT;

WITH SAID CURVE TO THE LEFT HAVING A RADIUS OF 25.00 FEET, AN ARC LENGTH OF 12.19 FEET, A DELTA ANGLE OF 27 DEGREES 56 MINUTES 22 SECONDS, AND A CHORD WHICH BEARS SOUTH 26 DEGREES 26 MINUTES 40 SECONDS EAST, A DISTANCE OF 12.07 FEET TO A POINT FOR CORNER;

THENCE SOUTH 40 DEGREES 26 MINUTES 44 SECONDS EAST, CROSSING SAID LOT 1 PART OF THE WAY, LOT 2 PART OF THE WAY, AND LOT 3 PART OF THE WAY, A DISTANCE OF 156.16 FEET TO A POINT FOR CORNER AT THE BEGINNING OF A CURVE TO THE LEFT;

THENCE CROSSING SAID LOT 3 THE FOLLOWING EIGHT (8) CALLS:

WITH SAID CURVE TO THE LEFT HAVING A RADIUS OF 26.00 FEET, AN ARC LENGTH OF 21.81 FEET, A DELTA ANGLE OF 48 DEGREES 04 MINUTES 10 SECONDS, AND A CHORD WHICH BEARS SOUTH 64 DEGREES 26 MINUTES 56 SECONDS EAST, A DISTANCE OF 21.18 FEET TO A POINT FOR CORNER;




**EASEMENT ABANDONMENT  
1.038 ACRES  
LOTS 1-3, BLOCK 1  
RIVERFRONT LOFTS ADDITION  
TARRANT COUNTY, TEXAS**

**CERTIFICATION:**

I HEREBY CERTIFY THAT THIS SURVEY HAS BEEN PREPARED FROM AN ACCURATE ON-THE-GROUND SURVEY OF THE PREMISES DEPICTED HEREON AND DESCRIBED IN THE LEGAL DESCRIPTION ATTACHED HERETO, CONDUCTED UNDER MY DIRECTION AND SUPERVISION ON 02/02/2017 AND THAT THE FINDINGS AND RESULTS OF SAID SURVEY ARE TRUE AND CORRECT TO THE BEST OF MY KNOWLEDGE AND BELIEF.

*J.E. Thompson*

J.E. THOMPSON II R.P.L.S. No 4857

		111 N. DIXON ST. GAINESVILLE, TX 76240 PH. 940-665-9105		
		TBPLS FIRM NO. 10048000		
DRAWN BY: T.A.R.	DATE: 04/22/2019	JOB NO. 19092-2	SCALE: 1" = 60'	PAGE: 6 OF 8

NORTH 89 DEGREES 45 MINUTES 26 SECONDS EAST, A DISTANCE OF 6.92 FEET TO A POINT FOR CORNER AT THE BEGINNING OF A CURVE TO THE LEFT;  
 WITH SAID CURVE TO THE LEFT HAVING A RADIUS OF 25.00 FEET, AN ARC LENGTH OF 20.31 FEET, A DELTA ANGLE OF 46 DEGREES 32 MINUTES 50 SECONDS, AND A CHORD WHICH BEARS NORTH 66 DEGREES 22 MINUTES 06 SECONDS EAST, A DISTANCE OF 19.76 FEET TO A POINT FOR CORNER;  
 NORTH 43 DEGREES 05 MINUTES 41 SECONDS WEST, A DISTANCE OF 66.77 FEET TO A POINT FOR CORNER AT THE BEGINNING OF A CURVE TO THE LEFT;  
 WITH SAID CURVE TO THE LEFT HAVING A RADIUS OF 51.00 FEET, AN ARC LENGTH OF 113.78 FEET, A DELTA ANGLE OF 127 DEGREES 49 MINUTES 50 SECONDS, AND A CHORD WHICH BEARS SOUTH 26 DEGREES 26 MINUTES 34 SECONDS EAST, A DISTANCE OF 91.61 FEET TO A POINT FOR CORNER;  
 SOUTH 89 DEGREES 38 MINUTES 30 SECONDS EAST, A DISTANCE OF 110.42 FEET TO A POINT FOR CORNER AT THE BEGINNING OF A CURVE TO THE RIGHT;  
 WITH SAID CURVE TO THE RIGHT HAVING A RADIUS OF 52.00 FEET, AN ARC LENGTH OF 45.33 FEET, A DELTA ANGLE OF 49 DEGREES 56 MINUTES 36 SECONDS, AND A CHORD WHICH BEARS NORTH 65 DEGREES 23 MINUTES 09 SECONDS WEST, A DISTANCE OF 43.91 FEET TO A POINT FOR CORNER;  
 THENCE NORTH 40 DEGREES 26 MINUTES 44 SECONDS WEST, CROSSING SAID LOT 3 PART OF THE WAY, LOT 2 PART OF THE WAY, AND LOT 1 PART OF THE WAY, A DISTANCE OF 156.16 FEET TO A POINT FOR CORNER AT THE BEGINNING OF A CURVE TO THE RIGHT;  
 THENCE CROSSING SAID LOT 1 THE FOLLOWING TWENTY (20) CALLS:  
 WITH SAID CURVE TO THE RIGHT HAVING A RADIUS OF 51.00 FEET, AN ARC LENGTH OF 24.87 FEET, A DELTA ANGLE OF 27 DEGREES 56 MINUTES 23 SECONDS, AND A CHORD WHICH BEARS NORTH 26 DEGREES 26 MINUTES 39 SECONDS WEST, A DISTANCE OF 24.62 FEET TO A POINT FOR CORNER AT THE BEGINNING OF A CURVE TO THE LEFT;  
 WITH SAID CURVE TO THE LEFT HAVING A RADIUS OF 53.00 FEET, AN ARC LENGTH OF 12.46 FEET, A DELTA ANGLE OF 12 DEGREES 27 MINUTES 58 SECONDS, AND A CHORD WHICH BEARS NORTH 19 DEGREES 12 MINUTES 24 SECONDS WEST, A DISTANCE OF 12.43 FEET TO A POINT FOR CORNER;  
 NORTH 25 DEGREES 56 MINUTES 23 SECONDS WEST, A DISTANCE OF 126.05 FEET TO A POINT FOR CORNER AT THE BEGINNING OF A CURVE TO THE RIGHT;  
 WITH SAID CURVE TO THE RIGHT HAVING A RADIUS OF 49.00 FEET, AN ARC LENGTH OF 21.33 FEET, A DELTA ANGLE OF 24 DEGREES 56 MINUTES 44 SECONDS, AND A CHORD WHICH BEARS NORTH 13 DEGREES 28 MINUTES 01 SECOND WEST, A DISTANCE OF 21.17 FEET TO A POINT FOR CORNER AT THE BEGINNING OF A CURVE TO THE LEFT;  
 WITH SAID CURVE TO THE LEFT HAVING A RADIUS OF 22.00 FEET, AN ARC LENGTH OF 8.58 FEET, A DELTA ANGLE OF 22 DEGREES 20 MINUTES 53 SECONDS, AND A CHORD WHICH BEARS NORTH 12 DEGREES 10 MINUTES 05 SECONDS EAST, A DISTANCE OF 8.53 FEET TO A POINT FOR CORNER AT THE BEGINNING OF A CURVE TO THE RIGHT;  
 WITH SAID CURVE TO THE RIGHT HAVING A RADIUS OF 25.00 FEET, AN ARC LENGTH OF 70.61 FEET, A DELTA ANGLE OF 161 DEGREES 49 MINUTES 16 SECONDS, AND A CHORD WHICH BEARS NORTH 23 DEGREES 56 MINUTES 54 SECONDS EAST, A DISTANCE OF 49.37 FEET TO A POINT FOR CORNER AT THE BEGINNING OF A CURVE TO THE LEFT;  
 WITH SAID CURVE TO THE LEFT HAVING A RADIUS OF 25.00 FEET, AN ARC LENGTH OF 20.81 FEET, A DELTA ANGLE OF 47 DEGREES 41 MINUTES 06 SECONDS, AND A CHORD WHICH BEARS NORTH 81 DEGREES 00 MINUTES 59 SECONDS EAST, A DISTANCE OF 20.21 FEET TO A POINT FOR CORNER;  
 NORTH 57 DEGREES 10 MINUTES 26 SECONDS WEST, A DISTANCE OF 137.71 FEET TO A POINT FOR CORNER AT THE BEGINNING OF A CURVE TO THE LEFT;  
 WITH SAID CURVE TO THE LEFT HAVING A RADIUS OF 300.00 FEET, AN ARC LENGTH OF 42.92 FEET, A CENTRAL ANGLE OF 8 DEGREES 11 MINUTES 47 SECONDS, AND A CHORD WHICH BEARS NORTH 53 DEGREES 04 MINUTES 33 SECONDS EAST, A DISTANCE OF 42.88 FEET TO A POINT FOR CORNER;  
 NORTH 48 DEGREES 58 MINUTES 40 SECONDS EAST, A DISTANCE OF 50.80 FEET TO A POINT FOR CORNER AT THE BEGINNING OF A CURVE TO THE LEFT;  
 WITH SAID CURVE TO THE LEFT HAVING A RADIUS OF 25.00 FEET, AN ARC LENGTH OF 44.71 FEET, A DELTA ANGLE OF 102 DEGREES 27 MINUTES 25 SECONDS, AND A CHORD WHICH BEARS NORTH 02 DEGREES 15 MINUTES 03 SECONDS WEST, A DISTANCE OF 38.98 FEET TO A POINT FOR CORNER;




**CERTIFICATION:**

I HEREBY CERTIFY THAT THIS SURVEY HAS BEEN PREPARED FROM AN ACCURATE ON-THE-GROUND SURVEY OF THE PREMISES DEPICTED HEREON AND DESCRIBED IN THE LEGAL DESCRIPTION ATTACHED HERETO, CONDUCTED UNDER MY DIRECTION AND SUPERVISION ON 02/02/2017 AND THAT THE FINDINGS AND RESULTS OF SAID SURVEY ARE TRUE AND CORRECT TO THE BEST OF MY KNOWLEDGE AND BELIEF.

*J.E. Thompson*

J.E. THOMPSON II R.P.L.S. No 4857

**EASEMENT ABANDONMENT  
 1.038 ACRES  
 LOTS 1-3, BLOCK 1  
 RIVERFRONT LOFTS ADDITION  
 TARRANT COUNTY, TEXAS**

		111 N. DIXON ST. GAINESVILLE, TX 76240 PH. 940-665-9105		
		TBPLS FIRM NO. 10048000		
DRAWN BY:	DATE:	JOB NO.	SCALE:	PAGE:
T.A.R.	04/22/2019	19092-2	1" = 60'	7 OF 8

NORTH 53 DEGREES 28 MINUTES 45 SECONDS WEST, A DISTANCE OF 33.76 FEET TO A POINT FOR CORNER AT THE BEGINNING OF A CURVE TO THE RIGHT;

WITH SAID CURVE TO THE RIGHT HAVING A RADIUS OF 124.50 FEET, AN ARC LENGTH OF 12.27 FEET, A DELTA ANGLE OF 5 DEGREES 38 MINUTES 49 SECONDS, AND A CHORD WHICH BEARS NORTH 30 DEGREES 39 MINUTES 21 SECONDS WEST, A DISTANCE OF 12.27 FEET TO A POINT FOR CORNER;

NORTH 47 DEGREES 49 MINUTES 57 SECONDS WEST, A DISTANCE OF 63.71 FEET TO A POINT FOR CORNER AT THE BEGINNING OF A CURVE TO THE RIGHT;

WITH SAID CURVE TO THE RIGHT HAVING A RADIUS OF 189.50 FEET, AN ARC LENGTH OF 145.98 FEET, A DELTA ANGLE OF 44 DEGREES 08 MINUTES 14 SECONDS, AND A CHORD WHICH BEARS NORTH 25 DEGREES 20 MINUTES 11 SECONDS WEST, A DISTANCE OF 142.40 FEET TO A POINT FOR CORNER AT THE BEGINNING OF A CURVE TO THE LEFT;

WITH SAID CURVE TO THE LEFT HAVING A RADIUS OF 25.00 FEET, AN ARC LENGTH OF 10.82 FEET, A DELTA ANGLE OF 24 DEGREES 47 MINUTES 16 SECONDS, AND A CHORD WHICH BEARS NORTH 15 DEGREES 39 MINUTES 42 SECONDS WEST, A DISTANCE OF 10.73 FEET TO A POINT FOR CORNER;

NORTH 28 DEGREES 02 MINUTES 26 SECONDS EAST, A DISTANCE OF 77.38 FEET TO A POINT FOR CORNER;

NORTH 27 DEGREES 26 MINUTES 57 SECONDS EAST, A DISTANCE OF 122.24 FEET TO A POINT FOR CORNER AT THE BEGINNING OF A CURVE TO THE RIGHT;

WITH SAID CURVE TO THE RIGHT HAVING A RADIUS OF 56.00 FEET, AN ARC LENGTH OF 84.98 FEET, A DELTA ANGLE OF 86 DEGREES 56 MINUTES 29 SECONDS, AND A CHORD WHICH BEARS NORTH 18 DEGREES 52 MINUTES 28 SECONDS EAST, A DISTANCE OF 77.05 FEET TO A POINT FOR CORNER;

NORTH 62 DEGREES 20 MINUTES 43 SECONDS EAST, A DISTANCE OF 7.87 FEET TO THE POINT OF BEGINNING AND ENCLOSING 1.038 ACRES OF LAND, MORE OR LESS.

### LINETYPE LEGEND

PROPERTY LINE =	
EASEMENT LINES =	
DEED/LOT LINES =	
ADJOINER LINES =	
WATER LINE =	WL WL
SEWER LINE =	SS SS
GAS LINE =	GAS GAS
COMMUNICATIONS LINE =	UC UC
OVERHEAD UTILITY =	OHU
ELECTRIC LINE =	E E
ASPHALT ROAD =	
GRAVEL ROAD =	
FENCE LINES =	X X

### LEGEND

	= PROPERTY CORNER	CM	= CONTROL MONUMENT
	= BENCHMARK	*	= BEARING BASIS
	= TELEPHONE/UTILITY RISER (TR/UR)	FF	= FINISHED FLOOR
	= BURIED CABLE MARKER (BCM)	MFCP	= METAL FENCE CORNER POST
	= TELEPHONE MANHOLE (TMH)	WFPC	= METAL FENCE CORNER POST
	= POWER/UTILITY POLE (PP/UP)	( )	= PLAT/DEED CALLS
	= LIGHT POLE (LP)	POB	= POINT OF BEGINNING
	= GUY WIRE (GUY)	R.O.W.	= RIGHT-OF-WAY
	= ELECTRIC VAULT (VLT)	D.E.	= DRAINAGE EASEMENT
	= ELECTRIC TRANSFORMER (TRAN)	E.E.	= ELECTRIC EASEMENT
	= WATER METER (WM)	U.E.	= UTILITY EASEMENT
	= WATER VALVE (WV)	W.E.	= WATER EASEMENT
	= FIRE HYDRANT (FH)	P.U.E.	= PUBLIC UTILITY EASEMENT
	= WATER MANHOLE (WMH)	B.L.	= BUILDING/SETBACK LINE
	= BURIED PIPELINE MARKER (BPM)	A.E.	= ACCESS EASEMENT
	= GAS METER (GM)	F.L.E.	= FIRELANE EASEMENT
	= GAS VALVE/TEST STATION (GV/TS)	S.W.E.	= SIDEWALK EASEMENT
	= GAS WELL HEAD (WH)	S.S.E.	= SANITARY SEWER EASEMENT
	= PROPANE TANK (PT)	IRF	= IRON ROD FOUND
	= SEPTIC CLEANOUT (C/O)	CIRF	= CAPPED IRON ROD FOUND
	= SEPTIC LID (SEPT)	CIRS	= CAPPED IRON ROD SET
	= SANITARY SEWER MANHOLE (SSMH)	PKF	= PK NAIL FOUND
	= STORM DRAIN MANHOLE (SDMH)	PKS	= PK NAIL SET
	= SIGN (SIGN)		= CONCRETE SURFACE
	= FLAGPOLE (FP)		= ASPHALT SURFACE
	= MAILBOX (MB)		= GRAVEL SURFACE
	= ABSTRACT CORNER		



**CERTIFICATION:**

I HEREBY CERTIFY THAT THIS SURVEY HAS BEEN PREPARED FROM AN ACCURATE ON-THE-GROUND SURVEY OF THE PREMISES DEPICTED HEREON AND DESCRIBED IN THE LEGAL DESCRIPTION ATTACHED HERETO, CONDUCTED UNDER MY DIRECTION AND SUPERVISION ON 02/02/2017 AND THAT THE FINDINGS AND RESULTS OF SAID SURVEY ARE TRUE AND CORRECT TO THE BEST OF MY KNOWLEDGE AND BELIEF.

*J.E. Thompson*

J.E. THOMPSON II R.P.L.S. No 4857

**EASEMENT ABANDONMENT  
1.038 ACRES  
LOTS 1-3, BLOCK 1  
RIVERFRONT LOFTS ADDITION  
TARRANT COUNTY, TEXAS**

	111 N. DIXON ST. GAINESVILLE, TX 76240 PH. 940-665-9105			
	TBPLS FIRM NO. 10048000			
DRAWN BY: T.A.R.	DATE: 04/22/2019	JOB NO. 19092-2	SCALE: 1" = 60'	PAGE: 8 OF 8