

11101-DFW Airport-FN-R10

EXHIBIT A
FIELD NOTES
DFW AIRPORT
VARIABLE WIDTH (3.941 ACRE) EASEMENT AREA &
MAINTENANCE AREA (0.6622 ACRE)

Being all of those certain lots, tracts, or parcels of land being located in the W.K. PAYNE SURVEY, ABSTRACT 1211 and E. MOORE SURVEY, ABSTRACT 1029, Tarrant County, Texas, being a portion of that certain 277.7476 acre tract conveyed to City of Dallas by deed recorded in Volume 5283, Page 791, Deed Records, Tarrant County, Texas (D.R.,T.Co.,Tx.), a portion of the eastward extension of Coppell Road, a portion of that certain 18.486 acre tract conveyed to City of Fort Worth by deed recorded in Volume 5475, Page 301, D.R.,T.Co.,Tx., and being more particularly described, in two separate tracts and by metes and bounds, as follows:

VARIABLE WIDTH EASEMENT AREA

BEGINNING at a point (N 7,026,817.72 E 2,410,784.22) being located in the common West line of said 18.486 acre tract, East line of that certain 35.88 acre tract conveyed to Oncor Electric Delivery Company, LLC by deed recorded as Document 218025857, D.R.,T.Co.,Tx., and bearing North 00 degrees 33 minutes 15 seconds West a distance of 139.89 feet from a 1/2 inch iron pin found in the North Right Of Way (R.O.W.) line of DART railroad tract for common Southwest corner of said 18.486 acre tract and Southeast corner of said 35.88 acre tract;

THENCE with said common line, North 00 degrees 33 minutes 15 seconds West a distance of 100.00 feet to a point bearing South 00 degrees 33 minutes 15 seconds East a distance of 60.26 feet from a 1/2 inch iron pin found in said West line of 18.486 acre tract for common most Northerly Southeast corner of said 35.88 acre tract and Southeast corner of the remainder of that certain 41.230 acre tract "M112" conveyed to Total E&P USA Barnett, LLC by deed recorded as Document 216266568, D.R.,T.Co.,Tx.;

THENCE departing said common line, North 89 degrees 26 minutes 45 seconds East a distance of 38.36 feet to a point for corner;

THENCE North 00 degrees 16 minutes 58 seconds West a distance of 3245.66 feet to a point being located in the common North line of said 277.7476 acre tract, South R.O.W. line of State Highway 26 (variable width R.O.W.), and bearing North 42 degrees 21 minutes 16 seconds East a distance of 78.92 feet from a brass monument found in said South R.O.W. line of State Highway 26 for common Northwest corner of said 277.7476 acre tract and Northeast corner of that certain Lot 1, Block 1, Great Wolf Addition of Grapevine as recorded in Cabinet A, Slide 11261, Plat Records, Tarrant County, Texas;

THENCE with said common line, North 42 degrees 21 minutes 16 seconds East a distance of 73.82 feet to a point for corner;

THENCE departing said common line, South 00 degrees 16 minutes 58 seconds East a distance of 3399.73 feet to a point for corner;
THENCE South 89 degrees 26 minutes 45 seconds West a distance of 87.89 feet to the point of BEGINNING, containing 3.941 acres of land.

MAINTENANCE AREA

BEGINNING at a point (N 7,030,141.89 E 2,410,785.70) being located in the common North line of said 277.7476 acre tract, South R.O.W. line of State Highway 26 (variable width R.O.W.), and bearing North 42 degrees 21 minutes 16 seconds East a distance of 49.39 feet from a brass monument found in said South R.O.W. line of State Highway 26 for common Northwest corner of said 277.7476 acre tract and Northeast corner of that certain Lot 1, Block 1, Great Wolf Addition of Grapevine as recorded in Cabinet A, Slide 11261, Plat Records, Tarrant County, Texas;

THENCE with said common line, North 42 degrees 21 minutes 16 seconds East a distance of 22.14 feet to a point being located in the West line of proposed transmission line easement, described herein;

THENCE with said West line of proposed transmission line easement, South 00 degrees 16 minutes 58 seconds East a distance of 1931.20 feet to a point for corner;

THENCE South 89 degrees 43 minutes 02 seconds West a distance of 15.00 feet to a point for corner;

THENCE North 00 degrees 16 minutes 58 seconds West a distance of 1914.91 feet to the point of BEGINNING, containing 0.6622 of an acre of land.

(See attached "EXHIBIT B")



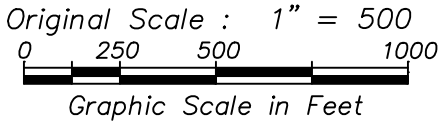
PREPARED FROM DEED RECORDS FURNISHED AND A SURVEY MADE ON THE GROUND IN APRIL & JUNE, 2018.

A handwritten signature in cursive script that reads "Isaac P. Grier".

ISAAC P. GRIER R.P.L.S. 5838

NOTE: Bearings, distances, acreages and coordinates are based on NAD 83, Grid, North Central Zone, Texas State Plane Coordinate System. Grid to surface scale factor = 1.00014996

Bearings, distance, acreages & coordinates are based on NAD 83, Grid, North Central Zone, Texas State Plane Coordinate System. Grid to surface scale factor = 1.00014996



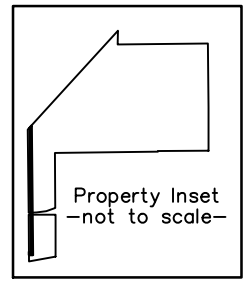
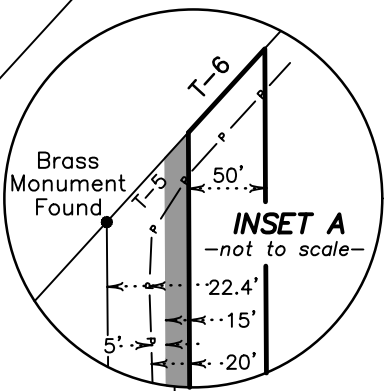
— LEGEND —

	PROPERTY LINE
	SURVEY LINE (approx. location)
	CENTERLINE
	IRON PIN FOUND
	EXPLORER PIPELINE
	MAINTENANCE AREA

SEE
INSET A

Brass Monument Found

State Highway 26



See Page
2 of 2
MAINTENANCE AREA

TANGENT TABLE

No.	Bearing	Dist.
T-1	N 00°33'15" W	139.89'
T-2	N 00°33'15" W	100.00'
T-3	S 00°33'15" E	60.26'
T-4	N 89°26'45" E	33.36'
T-5	N 42°21'16" E	78.92'
T-6	N 42°21'16" E	73.82'
T-7	S 89°26'45" W	82.89'

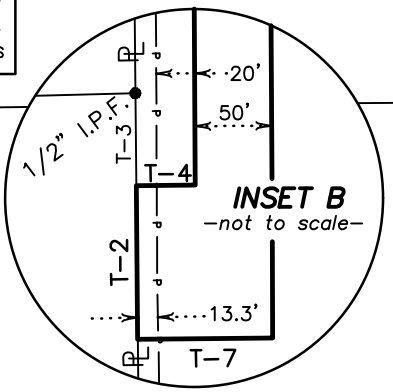
W.K. PAYNE
SURVEY A-1211
Lots 1-4, Block 1
Great Wolf Addition of Grapevine
Cab. A, Slide 11261
P.R., T.Co., Tx.

City of Dallas
Vol. 5283, Pg. 791
D.R., T.Co., Tx.
277.7476 Acres

C.F. MARTIN
SURVEY
A-1002

**VARIABLE WIDTH
EASEMENT AREA**
Area = 3.941 Acres

Coppell Road



Texan Trail

Total E&P USA Barnett, LLC
Document 216266568
D.R., T.Co., Tx.
Remainder of
41.230 Acres (M112)

City of Fort Worth
Vol. 5475, Pg. 301
D.R., T.Co., Tx.
18.486 Acres

T.J. DALTON
SURVEY, A-434

Oncor Electric Delivery
Company, LLC
Doc. 218025857
D.R., T.Co., Tx.
35.88 Acres

**EXHIBIT B
VARIABLE WIDTH EASEMENT AREA
& MAINTENANCE AREA**
being a portion of
DFW AIRPORT
in the



N 7,026,817.72
E 2,410,784.22
P.O.B.

W.K. PAYNE SURVEY, ABSTRACT 1211
E. MOORE SURVEY, ABSTRACT 1029
Tarrant County, Texas

PREPARED FROM RECORDS FURNISHED AND A SURVEY
MADE ON THE GROUND IN APRIL & JUNE, 2018.

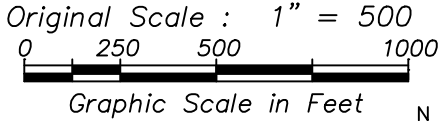
ISAAC P. GRIER R.P.L.S NO. 5838

Sempco Surveying, Inc.
3208 S. Main St.
Ft. Worth, TX 76110
(817) 926-7876

Proj. No. 11101-DFW Airport-R10 Firm Registration Number: 10094500

SCALE 1"=500'	VINEYARD SWITCH - MCKAMY TAP		SHEET NO. 1 OF 2
DWN: IPG CK: GRH	TARRANT COUNTY, TEXAS		
DATE: 02/17/20			

Bearings, distance, acreages & coordinates are based on NAD 83, Grid, North Central Zone, Texas State Plane Coordinate System. Grid to surface scale factor = 1.00014996

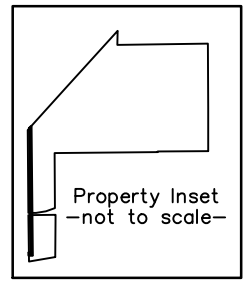
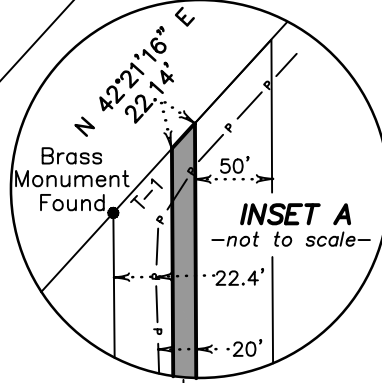


P.O.B.
N 7,030,141.89
E 2,410,785.70
MAINTENANCE AREA



State Hwy 26

SEE
INSET A



— LEGEND —

- PROPERTY LINE
- SURVEY LINE (approx. location)
- CENTERLINE
- IRON PIN FOUND
- EXPLORER PIPELINE
- MAINTENANCE AREA

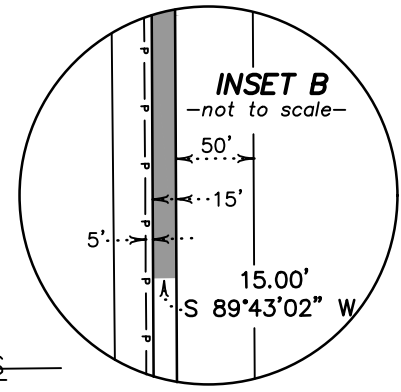
TANGENT TABLE

No.	Bearing	Dist.
T-1	N 42°21'16" E	49.39'

W.K. PAYNE SURVEY A-1211
Lots 1-4, Block 1
Great Wolf Addition of Grapevine
Cab. A, Slide 11261
P.R., T.Co., Tx.

MAINTENANCE AREA
Area = 0.6622 Acre

City of Dallas
Vol. 5283, Pg. 791
D.R., T.Co., Tx.
277.7476 Acres



Easement Area
See Page 1 of 2

Coppell Road

SEE
INSET B

T. J. DALTON
SURVEY, A-434

Texan Trail

Total E&P USA Barnett, LLC
Document 216266568
D.R., T.Co., Tx.
Remainder of
41.230 Acres (M112)

City of Fort Worth
Vol. 5475, Pg. 301
D.R., T.Co., Tx.
18.486 Acres

Oncor Electric Delivery
Company, LLC
Doc. 218025857
D.R., T.Co., Tx.
35.88 Acres

1/2" I.P.F.

EXHIBIT B
VARIABLE WIDTH EASEMENT AREA & MAINTENANCE AREA
being a portion of
DFW AIRPORT

in the
W.K. PAYNE SURVEY, ABSTRACT 1211
E. MOORE SURVEY, ABSTRACT 1029
Tarrant County, Texas



PREPARED FROM RECORDS FURNISHED AND A SURVEY
MADE ON THE GROUND IN APRIL & JUNE, 2018.

ISAAC P. GRIER

R.P.L.S NO. 5838

Sempco Surveying, Inc.
3208 S. Main St.
Ft. Worth, TX 76110
(817) 926-7876

Firm Registration Number: 10094500

Proj. No. 11101-DFW Airport-R10

SCALE 1"=500'	VINEYARD SWITCH - MCKAMY TAP			SHEET NO.
DWN: IPG CK: GRH	TARRANT COUNTY, TEXAS			2 OF 2
DATE: 02/17/20				