

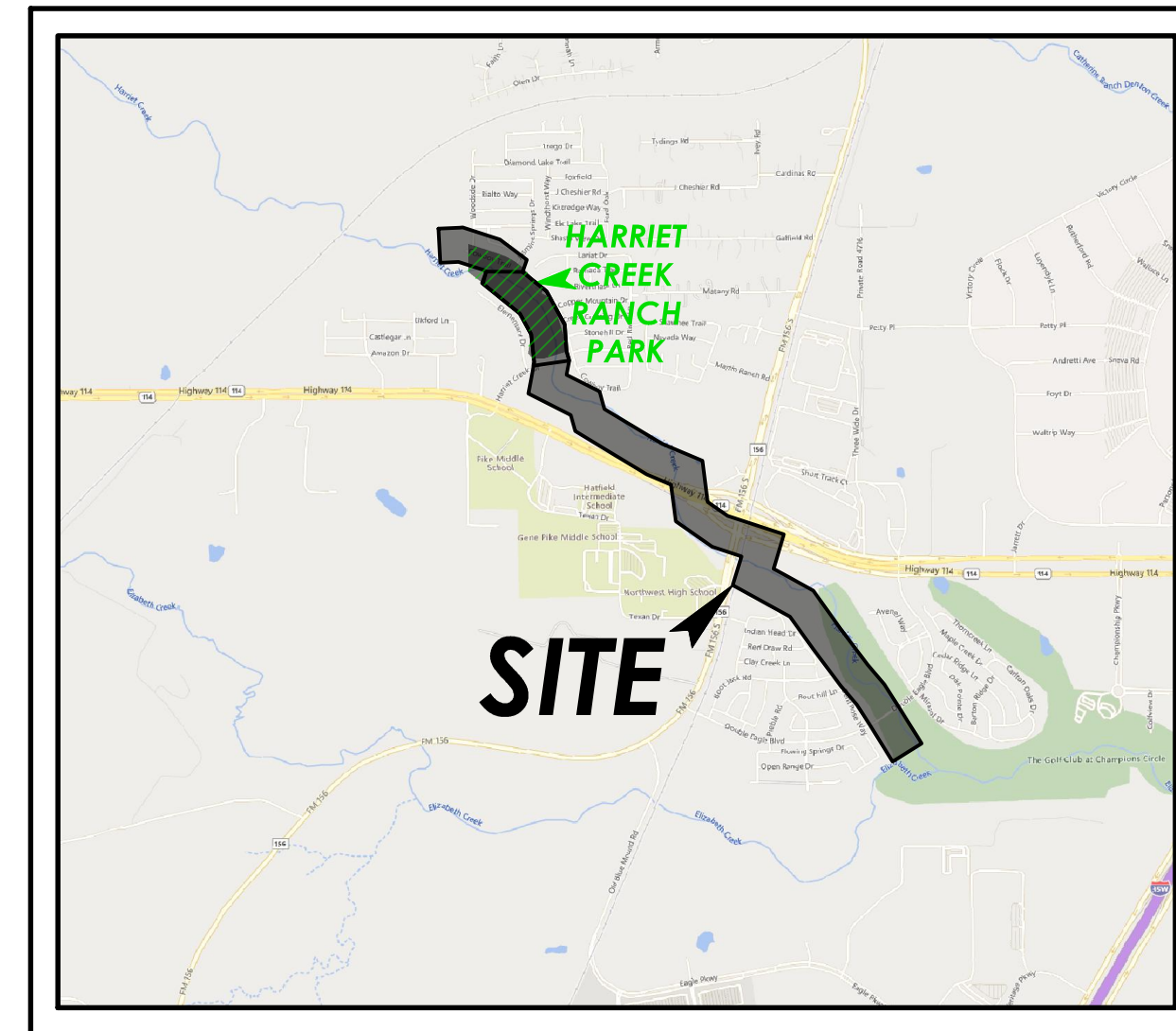
THE CITY OF FORT WORTH, TEXAS PLANS FOR THE CONSTRUCTION OF EAST OFFSITE SANITARY SEWER TO SERVE TRADITION

MATTIE PARKER
MAYOR

DAVID COOKE
CITY MANAGER

MICHAEL OWEN, P.E.
CITY ENGINEER, TRANSPORTATION
AND PUBLIC WORKS DEPARTMENT

CHRISTOPHER P. HARDER, P.E.
DIRECTOR, WATER DEPARTMENT

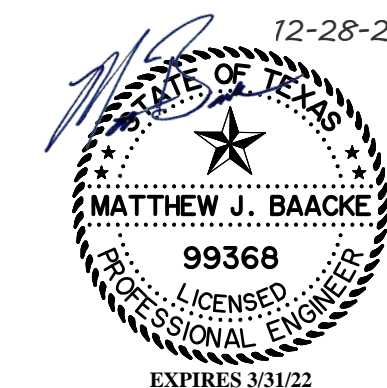


VICINITY MAP

N.T.S.

UNIT I SANITARY SEWER IMPROVEMENTS

Sheet No.	Description
1.	SANITARY SEWER OVERALL LAYOUT
2.	EASEMENT EXHIBIT
3.	S.S. LINE "S-1" PLAN & PROFILE - Sta. 1+00.00 to 11+00.00
4.	S.S. LINE "S-1" PLAN & PROFILE - Sta. 11+00.00 to 21+00.00
5.	S.S. LINE "S-1" PLAN & PROFILE - Sta. 21+00.00 to 31+00.00
6.	S.S. LINE "S-1" PLAN & PROFILE - Sta. 31+00.00 to 38+00.00
7.	S.S. LINE "S-1" PLAN & PROFILE - Sta. 38+00.00 to 47+00.00
8.	S.S. LINE "S-1" PLAN & PROFILE - Sta. 47+00.00 to 55+50.00
9.	S.S. LINE "S-1" PLAN & PROFILE - Sta. 55+50.00 to 66+00.00
10.	S.S. LINE "S-1" PLAN & PROFILE - Sta. 66+00.00 to 76+00.00
11.	S.S. LINE "S-1" PLAN & PROFILE - Sta. 76+00.00 to 85+00.00
12.	S.S. LINE "S-1" PLAN & PROFILE - Sta. 85+00.00 to 95+00.00
13.	S.S. LINE "S-1" PLAN & PROFILE - Sta. 95+00.00 to 105+00.00
14.	S.S. LINE "S-1" PLAN & PROFILE - Sta. 105+00.00 to 113+00.00
15.	S.S. LINE "S-1" PLAN & PROFILE - Sta. 113+00.00 to 122+50.00
16.	S.S. LINE "S-1" PLAN & PROFILE - Sta. 122+00.00 to 131+62.50
17.	SANITARY SEWER BYPASS PLAN
18.	GAS PIPELINE CROSSING NOTES
19.	CITY OF FORT WORTH GENERAL NOTES
20.	CITY OF FORT WORTH GENERAL DETAILS
21.	CITY OF FORT WORTH GENERAL DETAILS
22.	CITY OF FORT WORTH SEWER DETAILS
23.	EROSION CONTROL DETAILS
S1.1	JUNCTION BOX DETAILS
S2.1	JUNCTION BOX DETAILS
S2.2	JUNCTION BOX DETAILS



DECEMBER, 2021

IPRC NO. IPRC21-0083
CITY PROJECT NO. 103493
FID NO. 30114-0200431-103493-E07685
FILE NO. W-

OWNED/DEVELOPED BY:

Hines

2200 Ross Avenue, Suite 4200W
Dallas, Texas 75201
(972) 716-2900

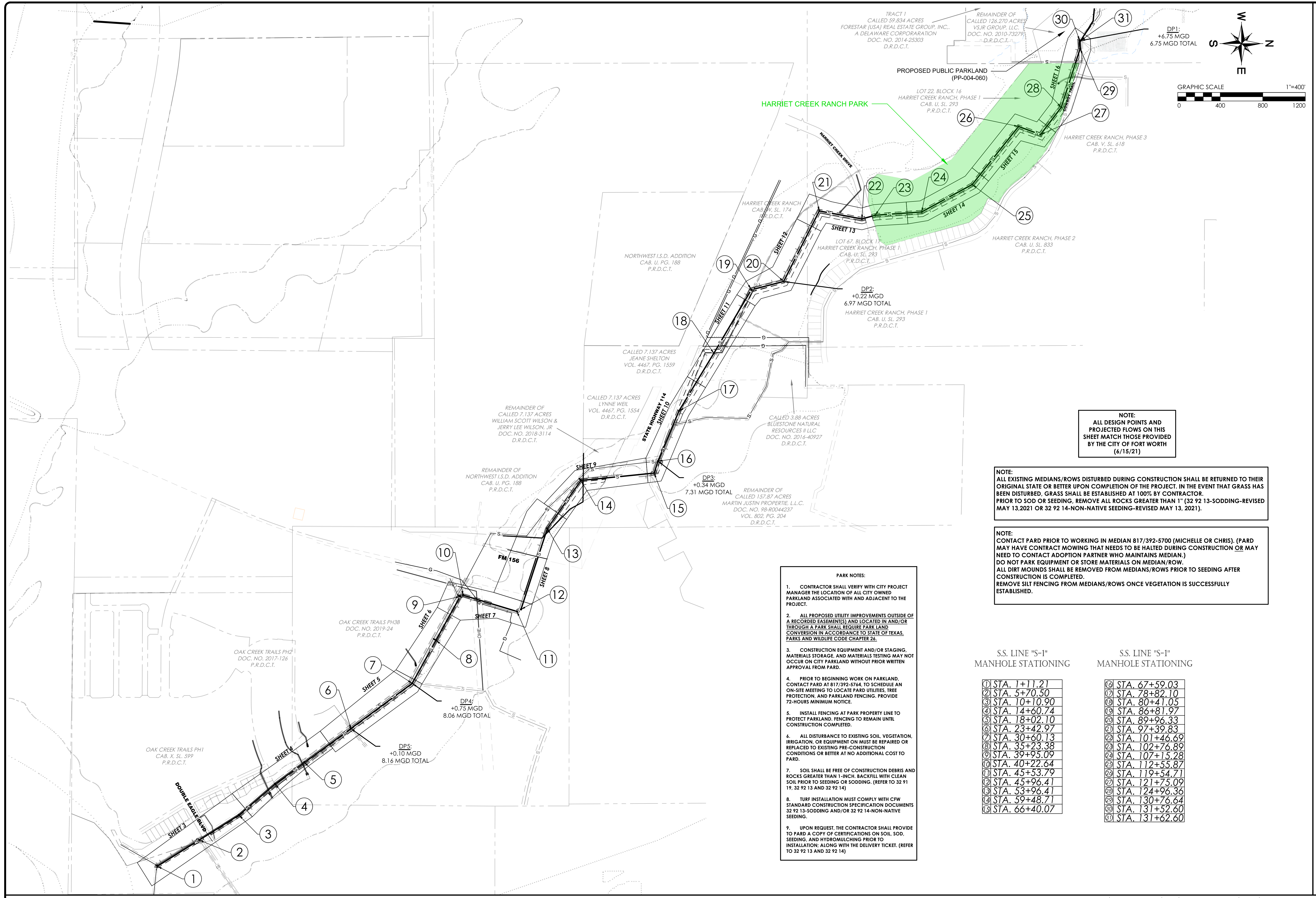
ENGINEER/SURVEYOR:

GOODWIN AND MARSHALL INC.
CIVIL ENGINEERS ~ PLANNERS ~ SURVEYORS

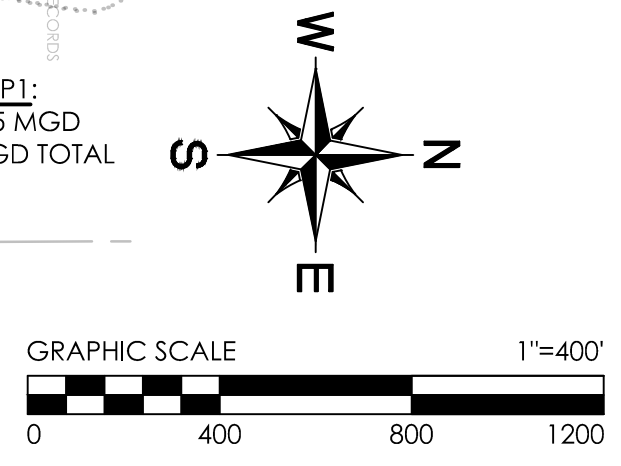
2405 Mustang Drive, Grapevine, Texas 76051
(817) 329 - 4373

DIRECTOR'S DESIGNEE FOR CONSTRUCTION
PLAN APPROVAL
RESOLUTION NO.: 01-10-2020
DATE

REVIEWED
PROJECT MANAGER
DATE



NO.	REVISION DATE



NOTE:
ALL DESIGN POINTS AND PROJECTED FLOWS ON THIS SHEET MATCH THOSE PROVIDED BY THE CITY OF FORT WORTH (6/15/21)

NOTE:
ALL EXISTING MEDIANS/ROWS DISTURBED DURING CONSTRUCTION SHALL BE RETURNED TO THEIR ORIGINAL STATE OR BETTER UPON COMPLETION OF THE PROJECT. IN THE EVENT THAT GRASS HAS BEEN DISTURBED, GRASS SHALL BE ESTABLISHED AT 100% BY CONTRACTOR. PRIOR TO SOD OR SEEDING, REMOVE ALL ROCKS GREATER THAN 1" (32 92 13-SODDING-REVISED MAY 13, 2021 OR 32 92 14-NON-NATIVE SEEDING-REVISED MAY 13, 2021).

NOTE:
CONTACT PARD PRIOR TO WORKING IN MEDIAN 817/392-5700 (MICHELLE OR CHRIS). (PARD MAY HAVE CONTRACT MOWING THAT NEEDS TO BE HALTED DURING CONSTRUCTION OR MAY NEED TO CONTACT ADOPTION PARTNER WHO MAINTAINS MEDIAN.) DO NOT PARK EQUIPMENT OR STORE MATERIALS ON MEDIAN/ROW. ALL DIRT MOUNDS SHALL BE REMOVED FROM MEDIANS/ROWS PRIOR TO SEEDING AFTER CONSTRUCTION IS COMPLETED. REMOVE SILT FENCING FROM MEDIANS/ROWS ONCE VEGETATION IS SUCCESSFULLY ESTABLISHED.

- PARK NOTES:**
- CONTRACTOR SHALL VERIFY WITH CITY PROJECT MANAGER THE LOCATION OF ALL CITY OWNED PARKLAND ASSOCIATED WITH AND ADJACENT TO THE PROJECT.
 - ALL PROPOSED UTILITY IMPROVEMENTS OUTSIDE OF A RECORDED EASEMENT(S) AND LOCATED IN AND/OR THROUGH A PARK SHALL REQUIRE PARK LAND CONVERSION IN ACCORDANCE TO STATE OF TEXAS, PARKS AND WILDLIFE CODE CHAPTER 26.
 - CONSTRUCTION EQUIPMENT AND/OR STAGING, MATERIALS STORAGE, AND MATERIALS TESTING MAY NOT OCCUR ON CITY PARKLAND WITHOUT PRIOR WRITTEN APPROVAL FROM PARD.
 - PRIOR TO BEGINNING WORK ON PARKLAND, CONTACT PARD AT 817/392-5744, TO SCHEDULE AN ON-SITE MEETING TO LOCATE PARD UTILITIES, TREE PROTECTION, AND PARKLAND FENCING. PROVIDE 72-HOURS MINIMUM NOTICE.
 - INSTALL FENCING AT PARK PROPERTY LINE TO PROTECT PARKLAND. FENCING TO REMAIN UNTIL CONSTRUCTION COMPLETED.
 - ALL DISTURBANCE TO EXISTING SOIL, VEGETATION, IRRIGATION, OR EQUIPMENT ON MUST BE REPAIRED OR REPLACED TO EXISTING PRE-CONSTRUCTION CONDITIONS OR BETTER AT NO ADDITIONAL COST TO PARD.
 - SOIL SHALL BE FREE OF CONSTRUCTION DEBRIS AND ROCKS GREATER THAN 1-INCH. BACKFILL WITH CLEAN SOIL PRIOR TO SEEDING OR SODDING. (REFER TO 32 91 19, 32 92 13 AND 32 92 14)
 - TURF INSTALLATION MUST COMPLY WITH CFW STANDARD CONSTRUCTION SPECIFICATION DOCUMENTS 32 92 13-SODDING AND/OR 32 92 14-NON-NATIVE SEEDING.
 - UPON REQUEST, THE CONTRACTOR SHALL PROVIDE TO PARD A COPY OF CERTIFICATIONS ON SOIL, SOD, SEEDING, AND HYDROMULCHING PRIOR TO INSTALLATION, ALONG WITH THE DELIVERY TICKET. (REFER TO 32 92 13 AND 32 92 14)

S.S. LINE "S-1" MANHOLE STATIONING

①	STA. 1+11.21
②	STA. 5+70.50
③	STA. 10+10.90
④	STA. 14+60.74
⑤	STA. 18+02.10
⑥	STA. 23+42.97
⑦	STA. 30+60.13
⑧	STA. 35+23.38
⑨	STA. 39+95.09
⑩	STA. 40+22.64
⑪	STA. 45+53.79
⑫	STA. 45+96.41
⑬	STA. 53+96.41
⑭	STA. 59+48.71
⑮	STA. 66+40.07

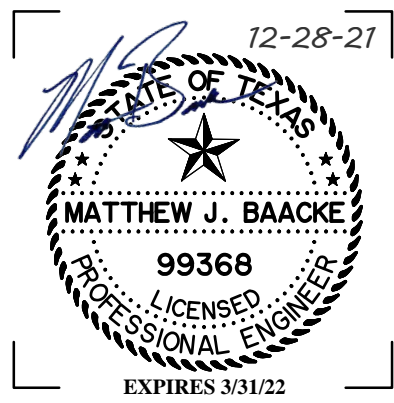
S.S. LINE "S-1" MANHOLE STATIONING

⑯	STA. 67+59.03
⑰	STA. 78+82.10
⑱	STA. 80+41.05
⑲	STA. 86+81.97
⑳	STA. 89+96.33
㉑	STA. 97+39.83
㉒	STA. 101+46.69
㉓	STA. 102+76.89
㉔	STA. 107+15.28
㉕	STA. 112+55.87
㉖	STA. 119+54.71
㉗	STA. 121+75.09
㉘	STA. 124+96.36
㉙	STA. 130+76.64
㉚	STA. 131+52.60
㉛	STA. 131+62.60

Hines
2200 Ross Avenue, Suite 4200W
Dallas, Texas 75201
(972) 716-9900

TRADITION
EAST OFFSITE SANITARY SEWER PLANS
CITY OF FORT WORTH
TARRANT COUNTY, TEXAS

GOODWIN & MARSHALL
CIVIL ENGINEERS - PLANNERS - SURVEYORS
2405 Mustang Drive, Grapevine, Texas 76051
(817) 266-4373
Tel: (817) 266-4373 Fax: (817) 266-4373



JOB NO.: 10720
DATE: 7/20/21
DSGN/DRFT: SAM/RS
REVIEW: MJB

1 of 23
OVERALL SEWER SHEET LAYOUT