

“EXHIBIT A”

Lying and situated in the City of Fort Worth, the Henry Robertson Survey, Abstract No. 1259, Tarrant County, Texas and being a part of Lot 1, Block 1 of Highland Meadows Addition, an addition to the City of Fort Worth according to the map or plat thereof recorded in Document No. D212306375, Official Public Records of Tarrant County, Texas (O.P.R.T.C.T.), and conveyed to SK Highland Meadows, L.P., a Texas limited partnership by a Special Warranty Deed, recorded in Doc. No. D204330342, O.P.R.T.C.T., and being more particularly described as follows:

COMMENCING at an “X” cut found at the intersection of the west right of way line of Shire Meadow Drive (60’ R.O.W.) with the south right of way line of Hillshire Drive (60’ R.O.W.) and being 536.30 feet, N 86° 16’ 25” E along said south right of way line from a 5/8” iron rod found; **THENCE** S 86° 16’ 25” W, along the south right of way line of Hillshire Drive, a distance of 16.15 feet; **THENCE** N 03° 43’ 35” W along the west terminus of Hillshire Drive, a distance of 60.00 feet; **THENCE** N 86° 16’ 25” E, along the north right of way line of Hillshire Drive, a distance of 7.42 feet to the **POINT OF BEGINNING**;

THENCE N 03° 26’ 42” E, passing the most easterly corner of a building at 155.24 feet and continuing in all a distance of 163.96 feet;

THENCE N 10° 00’ 48” W, a distance of 14.26 feet;

THENCE S 74° 59’ 53” W, a distance of 4.27 feet;

THENCE N 15° 40’ 38” W, along the east wall of the aforementioned building, a distance of 2.03 feet to a northeast corner thereof;

THENCE S 74° 29’ 37” W, along a north wall of said building, a distance of 0.94 feet;

THENCE N 15° 00’ 07” W, departing said north wall, a distance of 19.66 feet;

THENCE N 74° 59’ 53” E, a distance of 16.47 feet;

THENCE S 15° 00’ 07” E, a distance of 14.39 feet;

THENCE S 80° 32’ 45” E, a distance of 95.39 feet;

THENCE N 04° 10’ 18” E, a distance of 156.19 feet;

THENCE N 83° 27’ 19” E, a distance of 75.00 feet;

THENCE N 01° 26’ 04” W, a distance of 5.25 feet;

THENCE N 88° 33' 56" E, a distance of 23.00 feet;

THENCE S 01° 26' 04" E, a distance of 18.40 feet;

THENCE S 88° 33' 56" W, a distance of 23.00 feet;

THENCE N 01° 26' 04" W, a distance of 3.11 feet;

THENCE S 83° 27' 19" W, a distance of 65.82 feet;

THENCE S 04° 10' 18" W, a distance of 158.87 feet;

THENCE N 80° 32' 45" W, a distance of 103.42 feet;

THENCE S 10° 00' 49" E, a distance of 13.12 feet;

THENCE S 03° 26' 42" W, a distance of 155.14 feet to a corner clip on the north right of way line of Hillshire Drive;

THENCE S 41° 16' 25" W, along said corner clip, a distance of 12.47 feet;

THENCE S 86° 16' 25" W, along the north right of way line of Hillshire Drive, a distance of 2.34 feet to the POINT OF BEGINNING and containing 5,800.87 square feet of land, more or less.

BEARING BASIS:
 THE TEXAS STATE PLANE COORDINATE SYSTEM, NAD
 83, NORTH CENTRAL ZONE 4202, GRID.

HENRY ROBERTSON SURVEY
 ABSRTACT NO. 1259

LOT 1, BLOCK 1
 HIGHLAND MEADOWS ADDITION
 DOC. NO. D212306375
 O.P.R.T.C.T.

SCALE: 1" = 60'

CM = CONTROLLING MONUMENT

TANGENT	BEARING	LENGTH
T1	N 03°26'42" E	163.96'
T2	N 10°00'48" W	14.26'
T3	S 74°59'53" W	4.27'
T4	N 15°40'38" W	2.03'
T5	S 74°29'37" W	0.94'
T6	N 15°00'07" W	19.86'
T7	N 74°59'53" E	16.47'
T8	S 15°00'07" E	14.39'
T9	S 80°32'45" E	95.39'
T10	N 04°10'18" E	156.19'
T11	N 83°27'19" E	75.00'
T12	N 01°26'04" W	5.25'
T13	N 88°33'56" E	23.00'
T14	S 01°26'04" E	18.40'
T15	S 88°33'56" W	23.00'
T16	N 01°26'04" W	3.11'
T17	S 83°27'19" W	65.82'
T18	S 04°10'18" W	158.87'
T19	N 80°32'45" W	103.42'
T20	S 10°00'49" E	13.12'
T21	S 03°26'42" W	155.14'
T22	S 41°16'25" W	12.47'
T23	S 86°16'25" W	2.34'

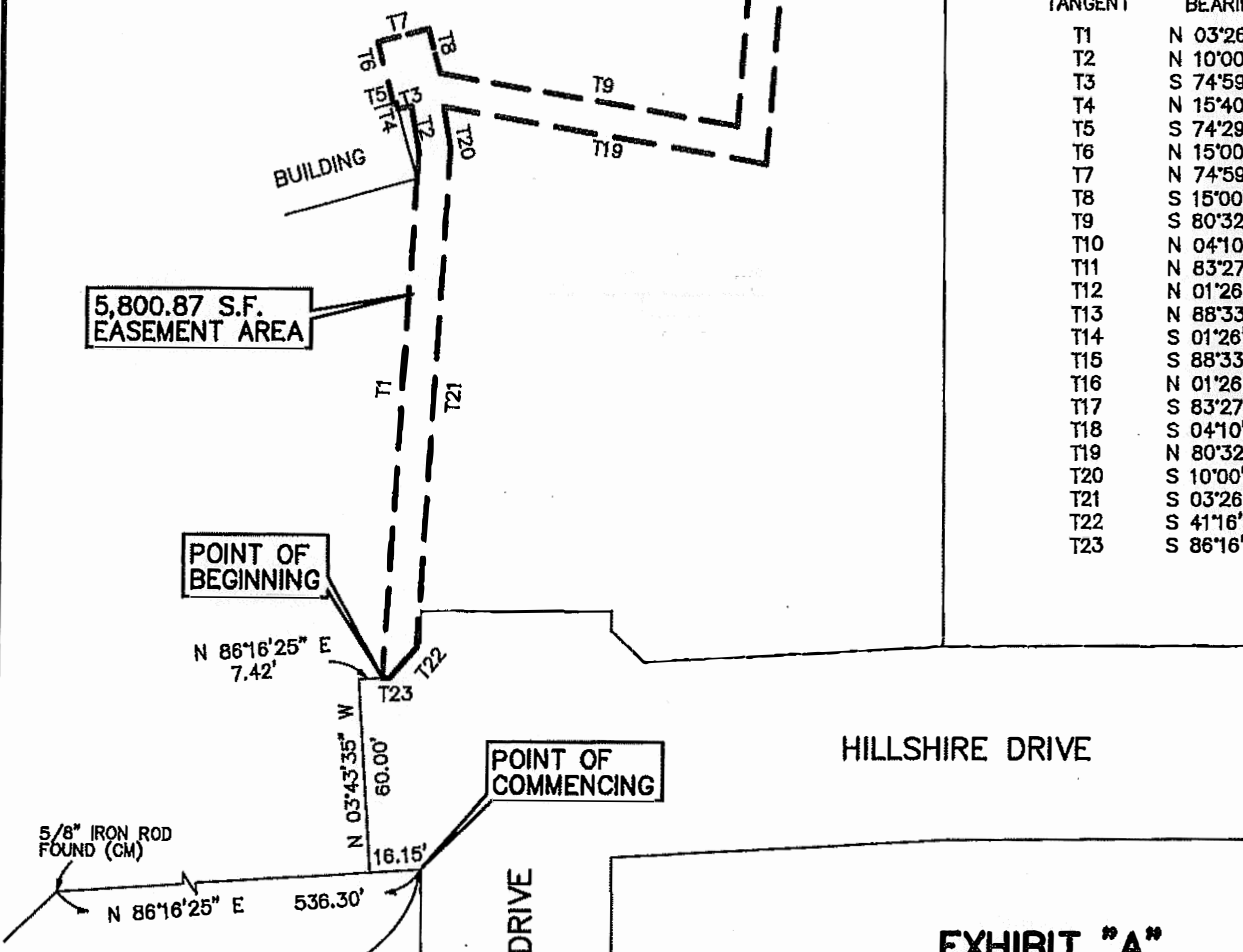


EXHIBIT "A"
ONCOR ELECTRIC DELIVERY CO.
EASEMENT
IN THE CITY OF FORT WORTH
TARRANT COUNTY, TEXAS

CORNERSTONE SURVEYING, INC
 200 WEST MARSHALL
 P.O BOX 699, PALMER, TEXAS 75152
 TEL. (972) 845-2505 ~ FAX. (972) 845-2455
 FIRM NO. 100215-00

