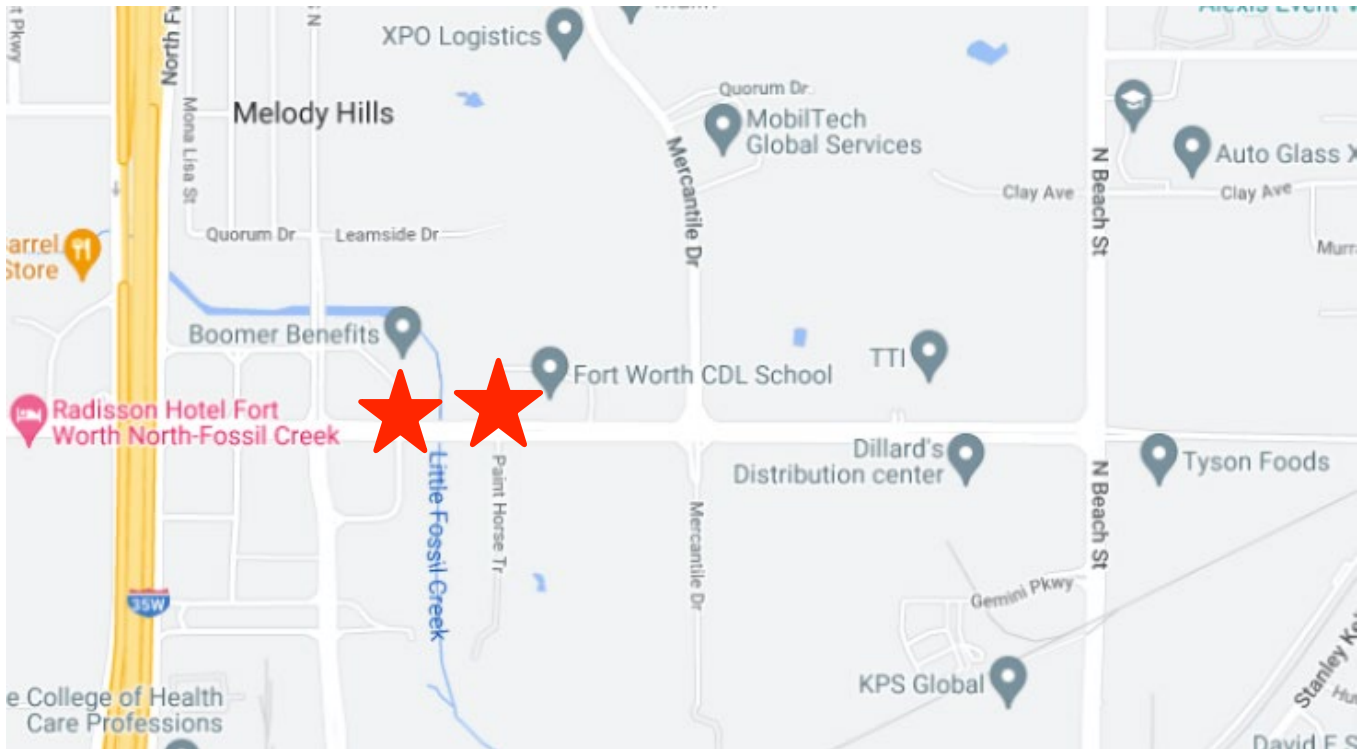


Meacham Corridor Public Art Project

Site: Meacham Boulevard near the intersections of Polaris Drive and Painted Horse Drive, Fort Worth, Texas 76137



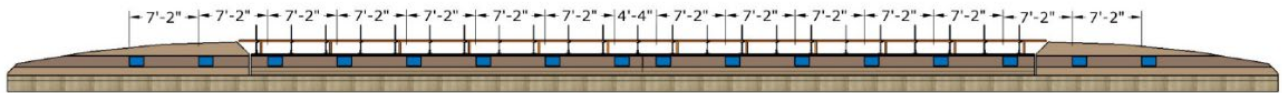
Narrative Description

Bridges carry many metaphorical meanings, and the bridges along Meacham Boulevard at Polaris Drive and Painted Horse Drive mark crossings over water, a natural landscape feature the artist has chosen to celebrate. For the Meacham Corridor Public Art Project, Vicki Scuri's design includes a series of translucent fins stretching along the railings of each bridge to create a sequenced gesture that will lead motorists along the boulevard, strengthening the artistic expression into a landmark.

The colorful conceptual design utilizes seven (7) rich hues inspired by the Texas skies. The 137 fins graduate and blend through the hues of dawn and dusk, along the length of the bridges. At the center of the crossings, the vibrant greenish blue identifies the water below. The translucent material quality and colors of the fins respond to changes in light and viewing angle, maximizing the amount of sun they catch and their visibility along the road. Speed, direction, motion, and time of day will all change the expression of the art, allowing each pass to be a new experience

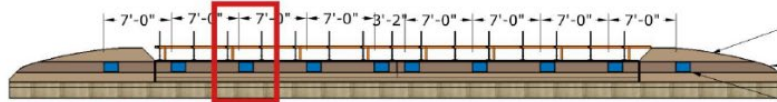
Final Design Images





West Bridge Typical Elevation

Confirm all dimensions with as-built field dimensions.



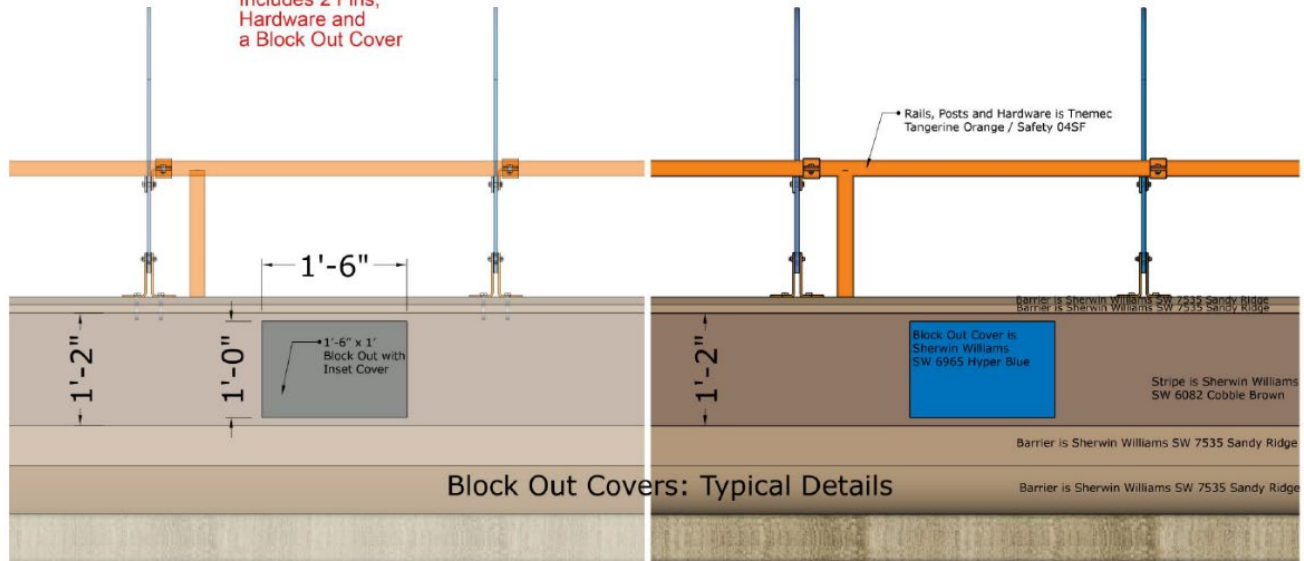
Updated Mockup Area Includes 2 Fins, Hardware and a Block Out Cover

East Bridge Typical Elevation

• Barrier is Sherwin Williams SW 7535 Sandy Ridge

• Stripe is Sherwin Williams SW 6082 Cobble Brown

• Block Out Cover is Sherwin Williams SW 6965 Hyper Blue



Block Out Covers: Typical Details

• Rails, Posts and Hardware is Thmeec Tangerine Orange / Safety 04SF

Barrier is Sherwin Williams SW 7535 Sandy Ridge

Barrier is Sherwin Williams SW 7535 Sandy Ridge

Stripe is Sherwin Williams SW 6082 Cobble Brown

Stripe is Sherwin Williams SW 6082 Cobble Brown

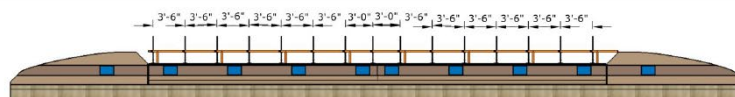
Barrier is Sherwin Williams SW 7535 Sandy Ridge

Barrier is Sherwin Williams SW 7535 Sandy Ridge

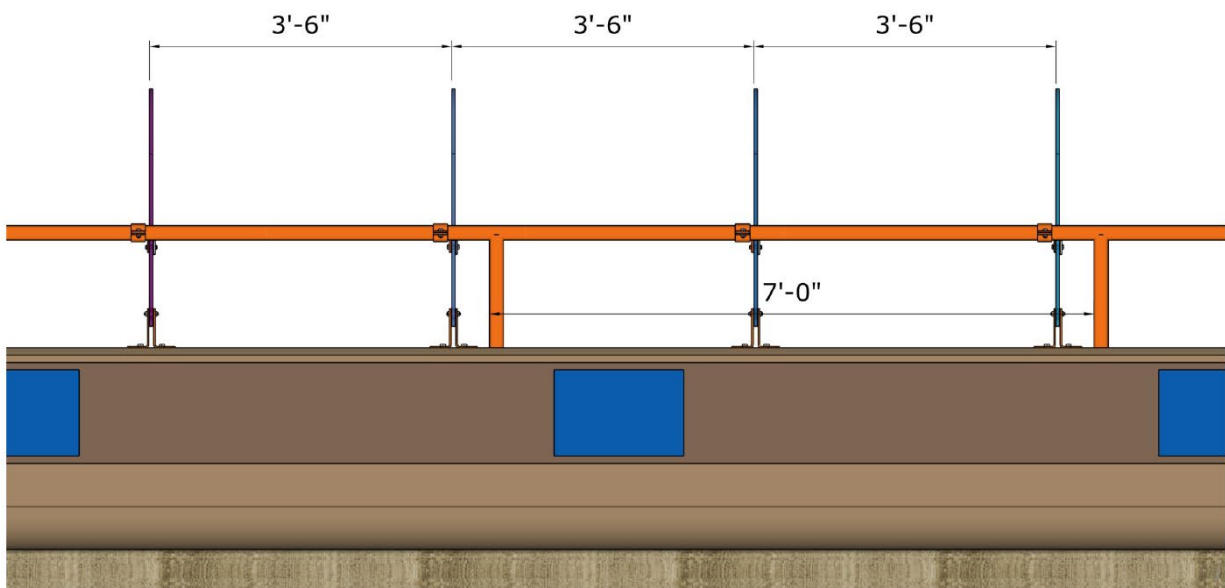
Barrier is Sherwin Williams SW 7535 Sandy Ridge

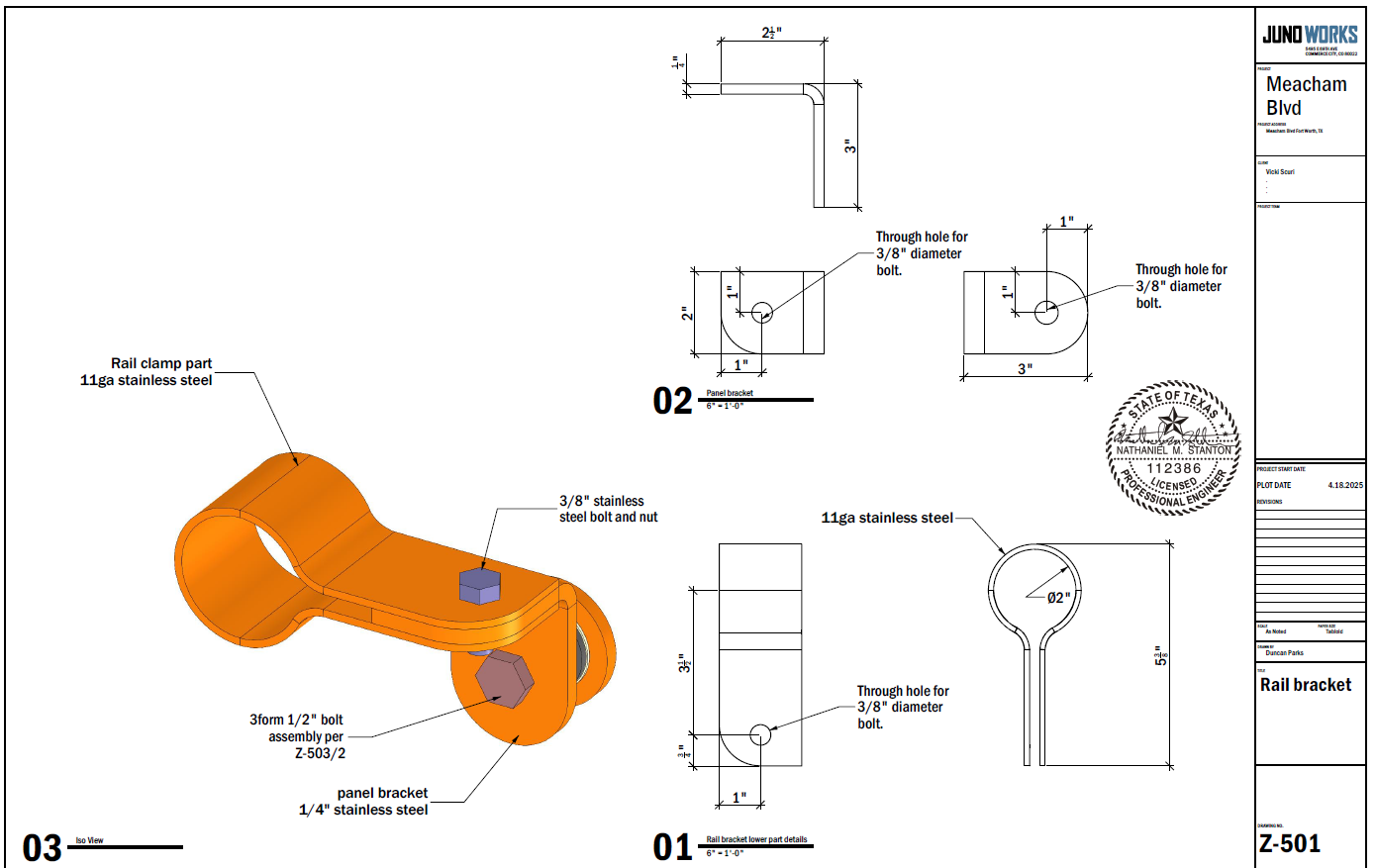
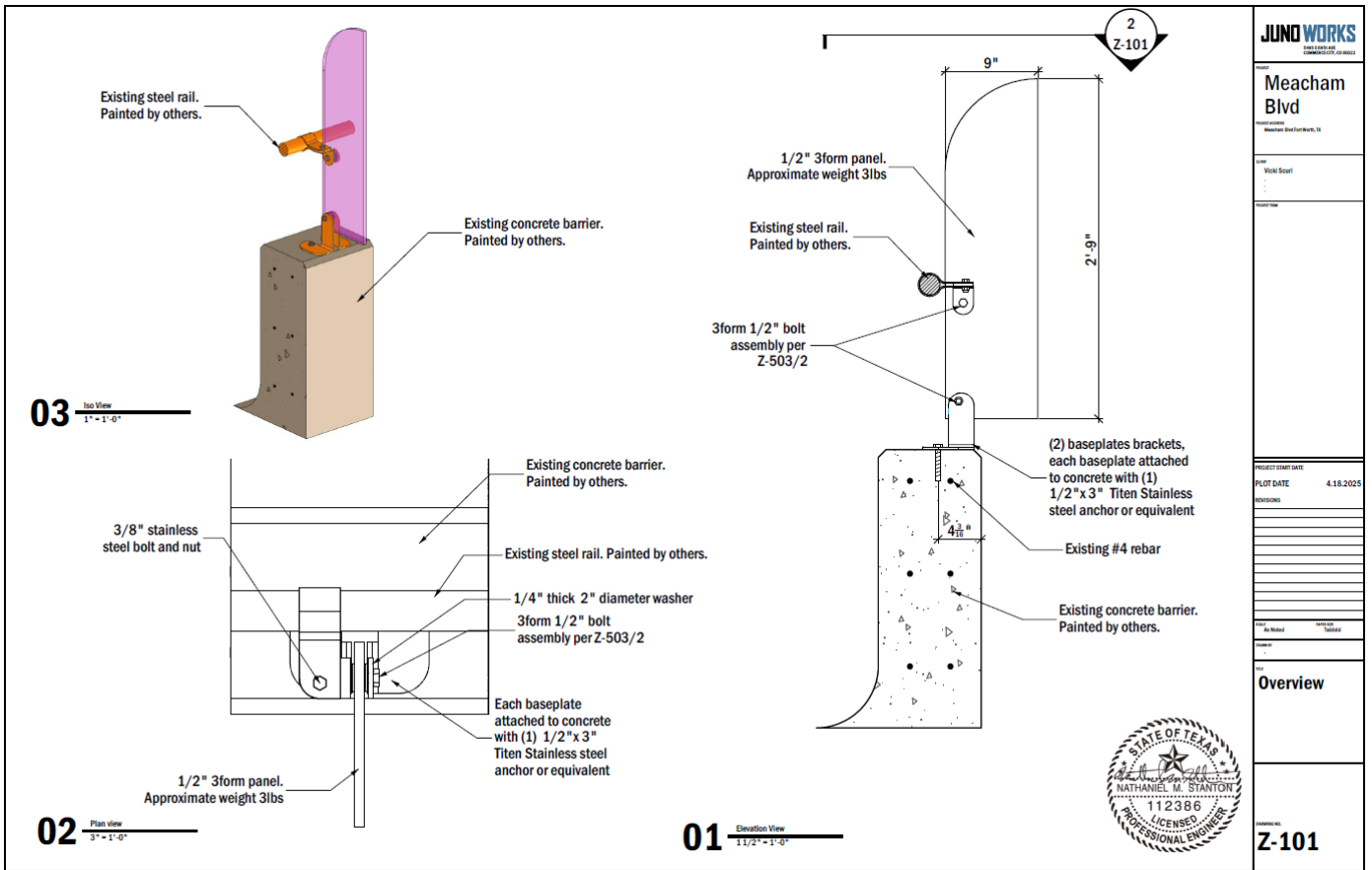
Barrier is Sherwin Williams SW 7535 Sandy Ridge

Confirm all dimensions with as-built field dimensions.

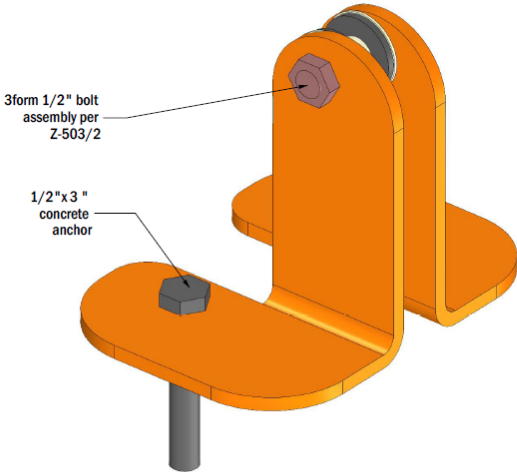


East Bridge Typical Elevation

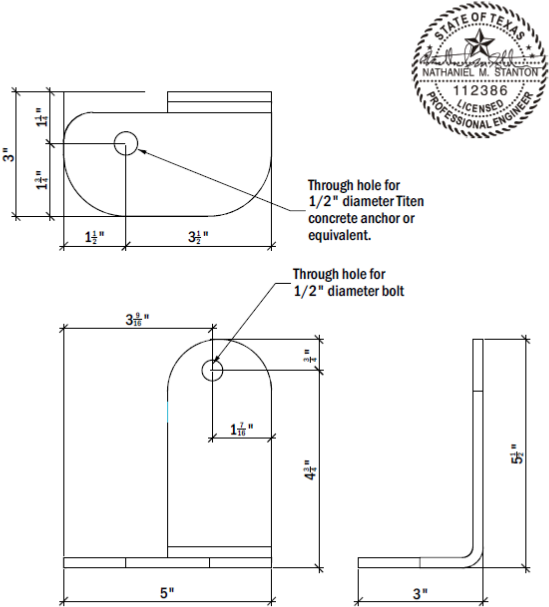




0.25" stainless steel



02 Iso View
11 1/8" - 1'-6"



01 Bottom Bracket Details
8" - 1'-0"



JUNO WORKS
MECHANICAL
COMMERCIAL • RESIDENTIAL

Meacham Blvd

PROJECT ADDRESS
Meacham Blvd Fort Worth, TX

DATE
VCM: Searl

PROJECT NAME

PROJECT START DATE

PLOT DATE 4.18.2025

REVISIONS

DATE: As Made PROJECT: Searl

BY: Shoniqua Parks

Bottom Bracket

UNIVERSAL NO.
Z-502