

APPROVED
By Virginia Villalobos at 9:03 am, Apr 30, 2025

NEZ APPROVAL ONLY.
PLANS WILL STILL REQUIRE
BUILDING AND ZONING PLAN
REVIEW. VRV

SURVEY SHOWN FOR REFERENCE ONLY.

BA - WINDOW SCHEDULE		
MARK	WIDTH	HEIGHT
A	3' - 0"	5' - 0"
B	4' - 0"	1' - 0"
C	3' - 0"	6' - 0"

BA - DOOR SCHEDULE		
MARK	WIDTH	HEIGHT
1	16' - 0"	8' - 0"
2	2' - 0"	6' - 8"
3	2' - 0"	6' - 8"
4	2' - 6"	6' - 8"
5	3' - 0"	8' - 0"
6	2' - 6"	6' - 8"
7	2' - 6"	6' - 8"
8	2' - 6"	6' - 8"
9	2' - 6"	6' - 8"
10	2' - 6"	6' - 8"
11	2' - 6"	6' - 8"
13	6' - 0"	8' - 0"
15	2' - 0"	6' - 8"
16	2' - 0"	6' - 8"

BA - SHEET INDEX	
NUMBER	NAME
00	COVER
01	FLOOR PLAN AND ELEVATIONS
02	ROOF PLAN AND WALL SECTION
03	ENLARGED PLAN
04	RCP AND PLUMBING PLAN
05	HVAC PLAN

NEW HOUSE

128 COTTONWOOD
ST FORT WORTH TX 76111

PROPERTY INFORMATION

SQUARE FOOTAGE

AC= 1881

NON AC=

GARAGE = 421 SF

PATIO = 128 SF

FRONT PORCH = 152 SF

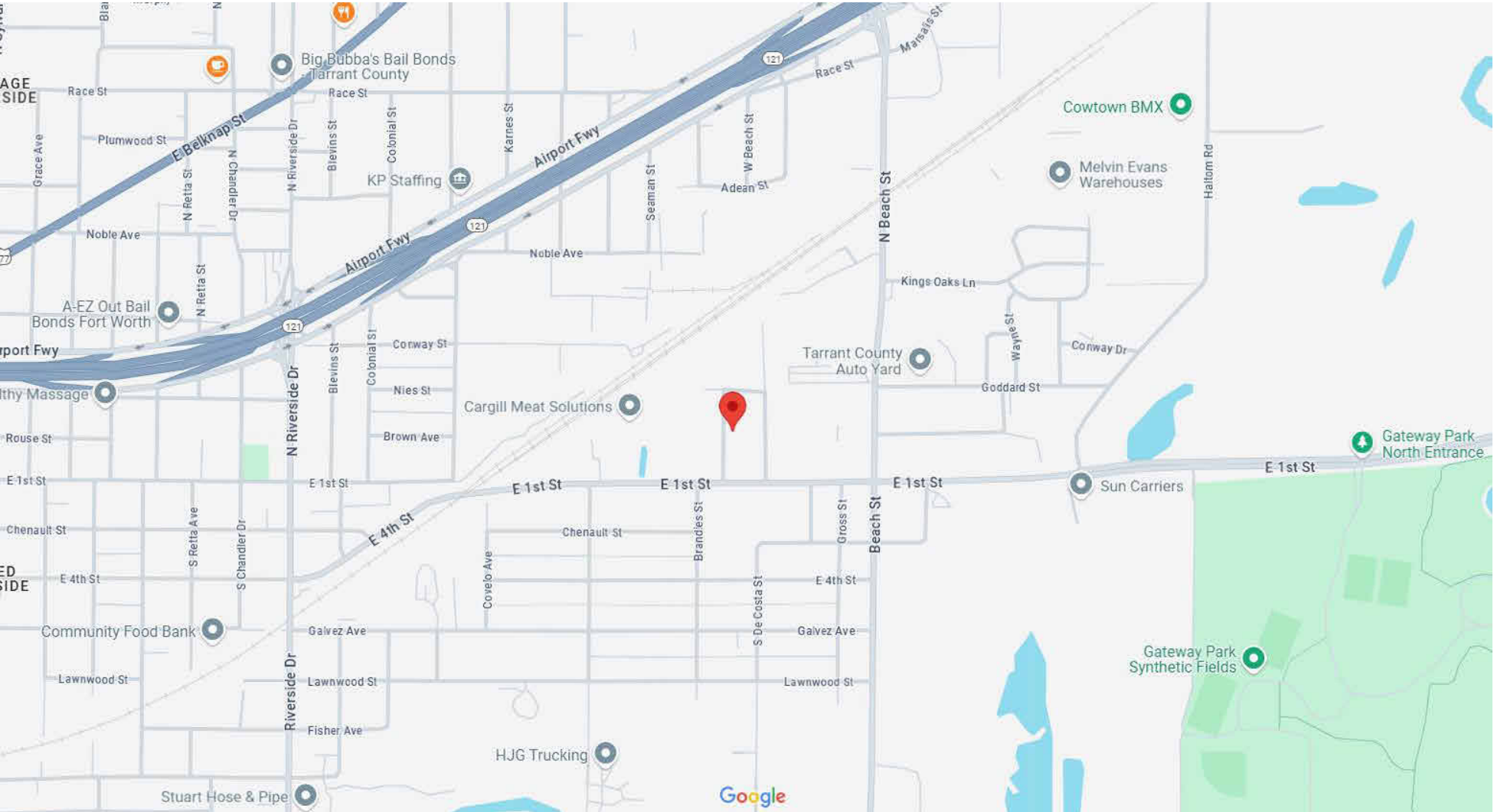
TOTAL = 2582

JURISDICTION: CITY OF FORT WORTH , TX.

ADOPTED BUILDING CODES:

2021 INTERNATIONAL RESIDENTIAL BUILDING CODE
2021 INTERNATIONAL PLUMBING BUILDING CODE
2021 INTERNATIONAL MECHANICAL CODE
2015 INTERNATIONAL ENERGY CONSERVATION CODE
2023 NATIONAL ELECTRICAL CODE

VICINITY MAP



BARRON SERVICES LLC
702 Houston St.
Fort Worth, TX 76102
(817) 233 5500
barronservices2005@outlook.com
www.barronservices.net

PROJECT: NEW HOUSE
CONTACT: MARCELO BARRON
ADDRESS: 128 COTTONWOOD
ST FORT WORTH TX 76111

DRAWN BY: MB

CHECKED BY: MB

PROJECT NO. 2025038

ISSUE DATE:

04/04/2025

REVISIONS

REV	DATE
-----	------

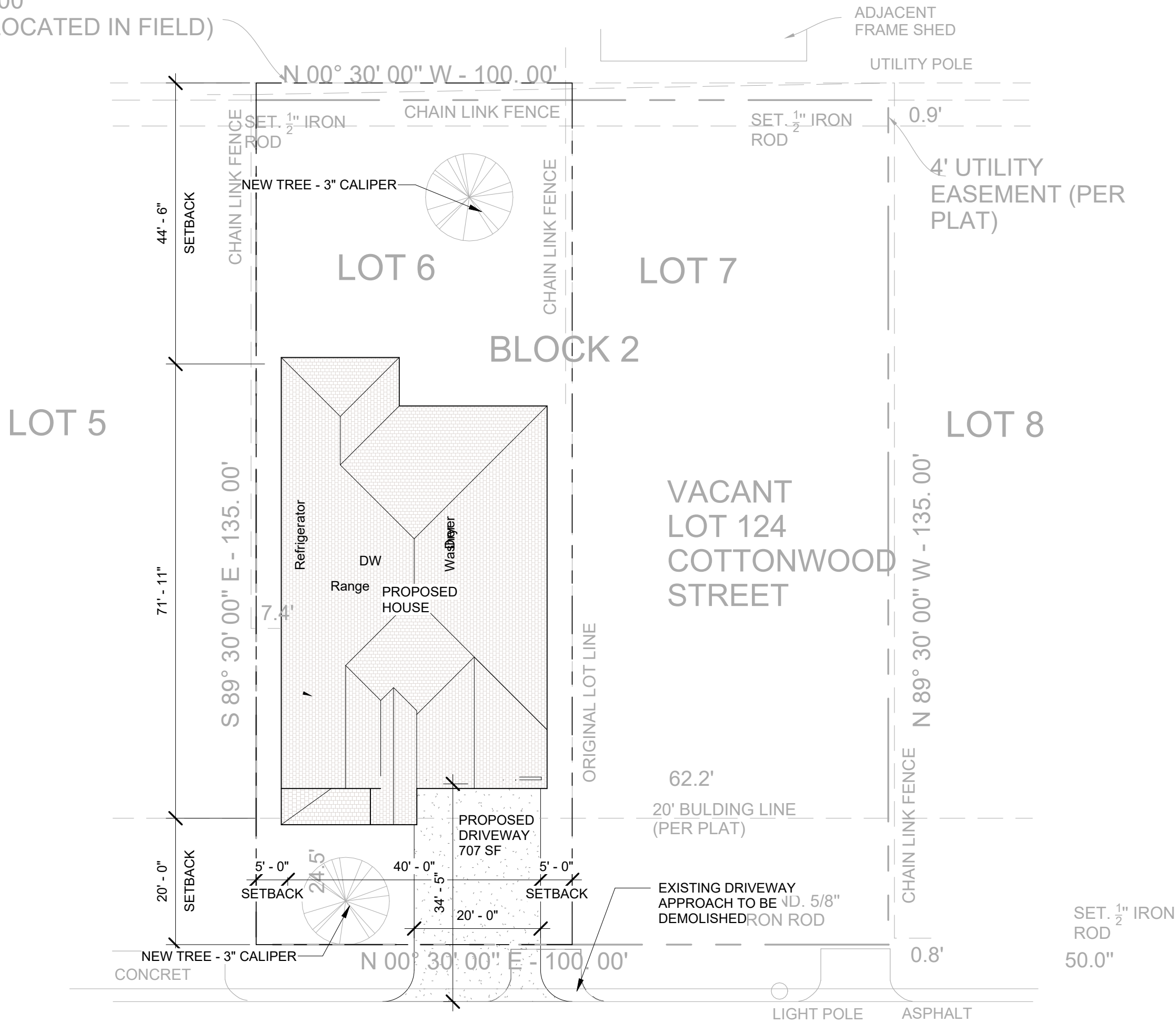
SHEET NAME

COVER

SHEET NO

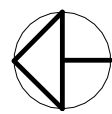
00

APPROXIMATE LOCATION
SANITARY SEWER LINE AS
SHOWN ON CITY OF FORT
WORTH SEWER MAP PAGE
2060-400
(NOT LOCATED IN FIELD)



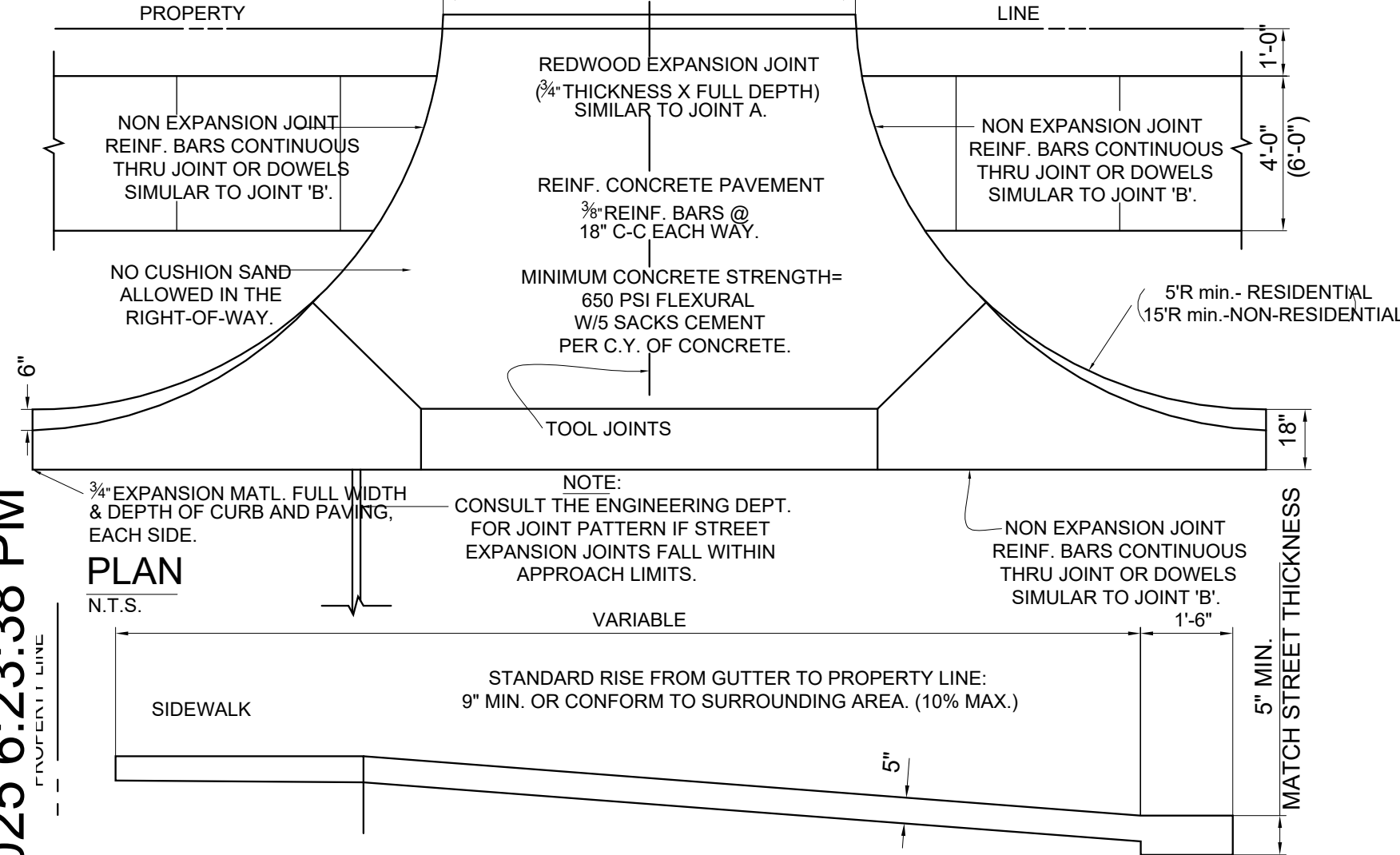
COTTONWOOD STREET
(50.00' R.O.W)

1 SITE PLAN
1/16" = 1'-0"



TYPICAL DRIVEWAY

ANY CONSTRUCTION WITHIN THE CITY'S RIGHT OF WAY (BETWEEN THE PROPERTY LINE AND EDGE OF PAVEMENT) MUST BE PERFORMED BY A BONDED CONCRETE CONTRACTOR.
18'-0" RESIDENTIAL



NOTES:
5' 3000 PSI REINFORCED CONCRETE PAVEMENT
#3 REBAR @ 18" OCEW SAWED AND SEALED @ 12' INTERVALS

DO NOT STAKE OR
WRAP TRUNK; MARK
THE NORTH SIDE OF
THE TREE IN THE
NURSERY AND
LOCATE TO THE
NORTH IN THE FIELD

X = MINIMUM WIDTH
OF PREPARED SOIL
FOR TREES

DIG WIDE, SHALLOW
HOLE WITH TAPERED
SIDES

TAMP SOIL SOLIDLY
AROUND BASE OF ROOT
BALL

AVOID PURCHASING TREES WITH TWO LEADERS,
OR REMOVE ONE AT PLANTING; OTHERWISE, DO
NOT PRUNE TREE AT PLANTING EXCEPT FOR
SPECIFIC STRUCTURAL CORRECTIONS
FOLD BURLAP AWAY FROM TOP OF ROOT BALL

SET ROOT BALL FLUSH TO GRADE OR SEVERAL
INCHES HIGHER IN POORLY DRAINING SOILS

4" BUILT-UP EARTH SAUCER

2" BARK MULCH (DO NOT PLACE MULCH IN
CONTACT WITH TREE TRUNK)

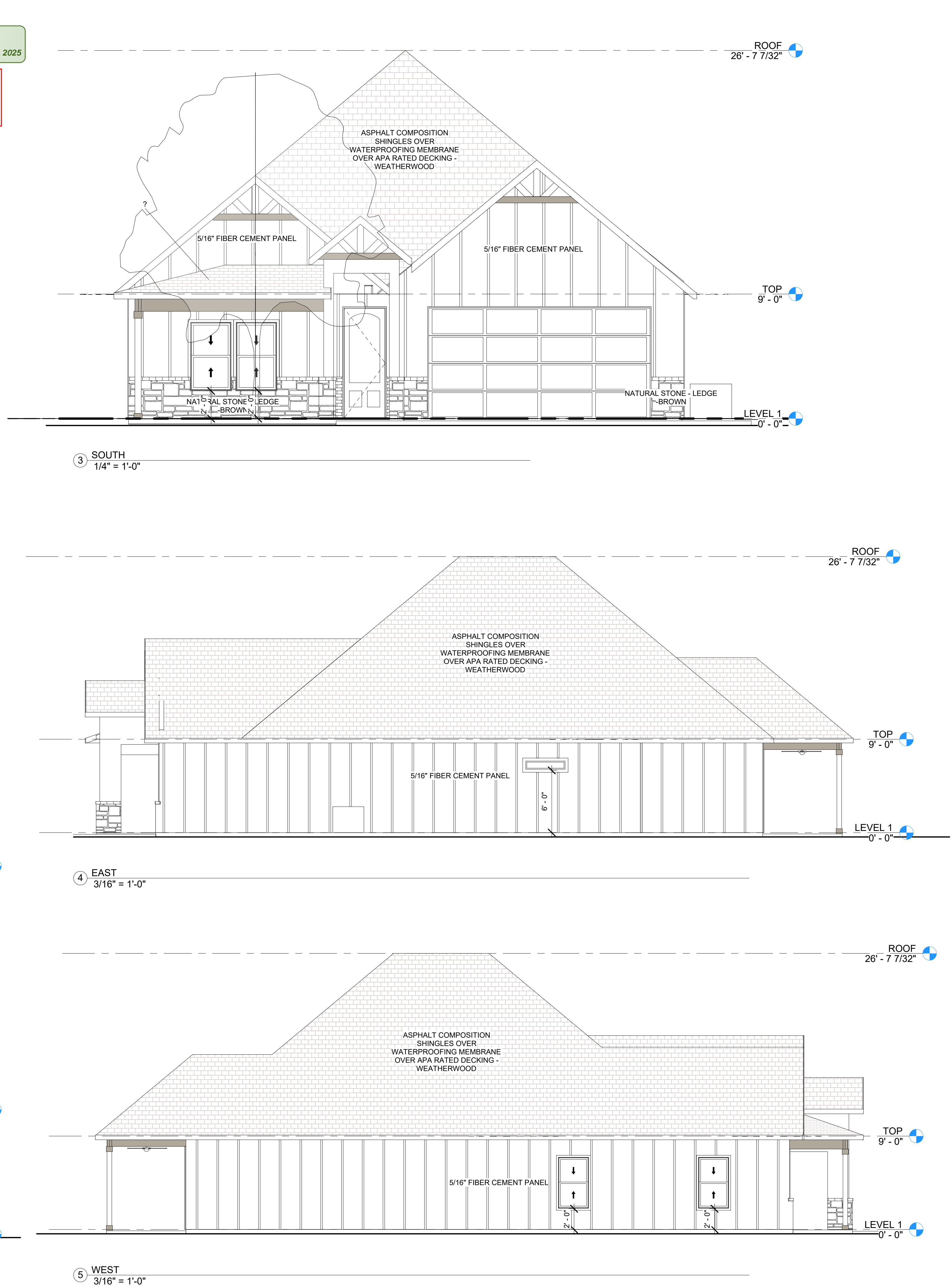
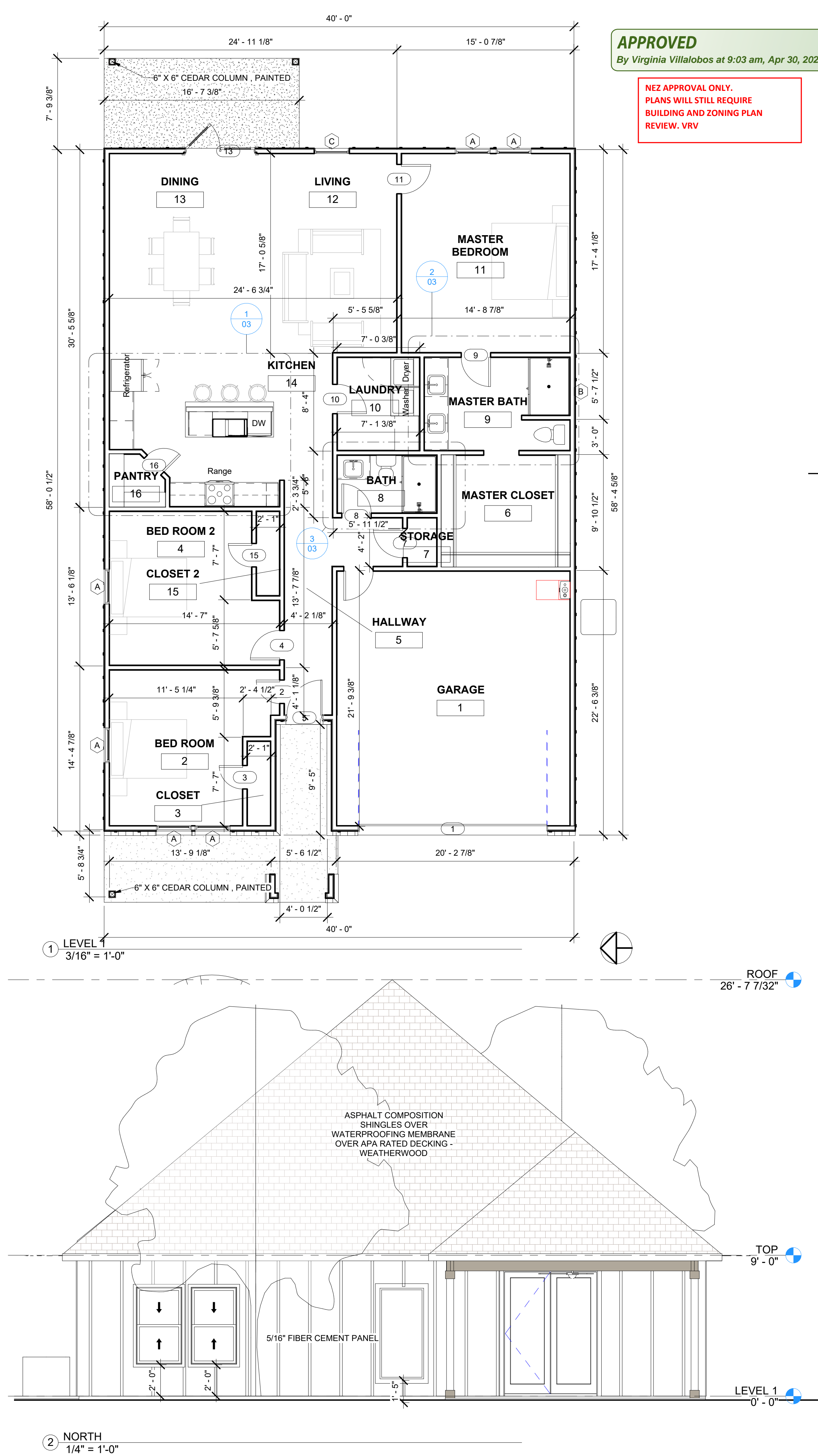
BEFORE PLANTING, ADD 3" TO 4" OF
WELL-COMPOSTED LEAVES OR RECYCLED YARD
WASTE TO BED AND TILL INTO THE TOP 6" OF
PREPARED SOIL

PREPARED SOIL FOR TREES

CUT TOP BANDS OF THE WIRE BASKET AND FOLD
AWAY FROM TOP OF ROOT BALL

SET ROOT BALL ON FIRM PAD IN BOTTOM OF
HOLE

4/4/2025 6:23:41 PM



<p>PROJECT: NEW HOUSE CONTACT: MARCELO BARRON ADDRESS: 128 COTTONWOOD ST FORT WORTH TX 76111</p>		<p>BARRON SERVICES LLC 702 Houston St. Fort Worth, TX 76102 (817) 233 5500 barronservices2005@outlook.com www.barronservices.net</p>
DRAWN BY: MB		
CHECKED BY: MB		
PROJECT NO. 2025038		
ISSUE DATE: 04/04/2025		
REVISIONS		
REV	DATE	
SHEET NAME FLOOR PLAN AND ELEVATIONS		
SHEET NO 01		