

PLANS FOR THE CONSTRUCTION OF SANITARY SEWER IMPROVEMENTS TO SERVE

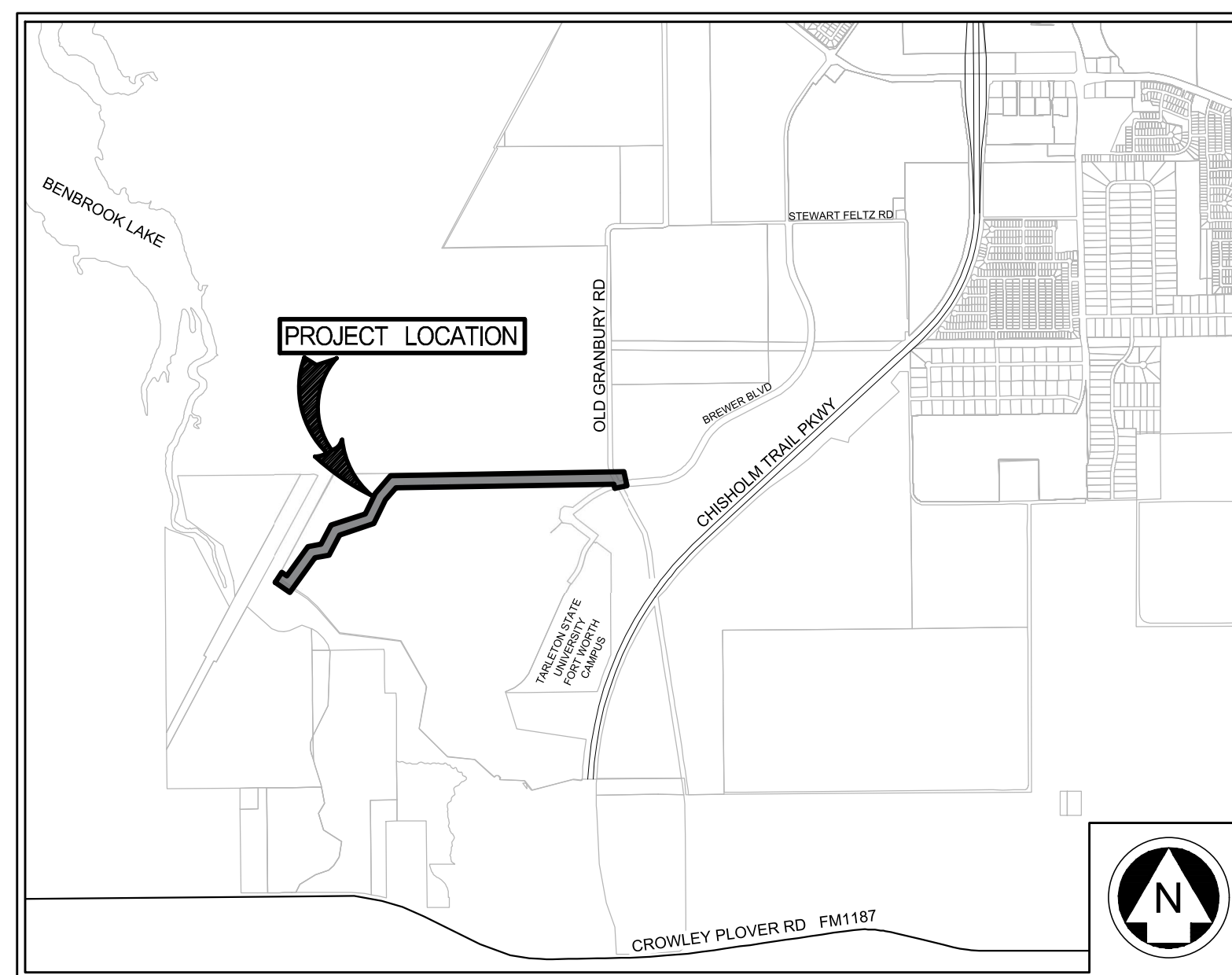
ROCK CREEK, PHASE 1 OFFSITE SEWER FORT WORTH, TARRANT COUNTY, TEXAS

MATTIE PARKER
MAYOR

DAVID COOKE
CITY MANAGER

MICHAEL OWEN, P.E.
CITY ENGINEER, TRANSPORTATION AND
PUBLIC WORKS DEPARTMENT

CHRISTOPHER P. HARDER, P.E.
DIRECTOR, WATER DEPARTMENT

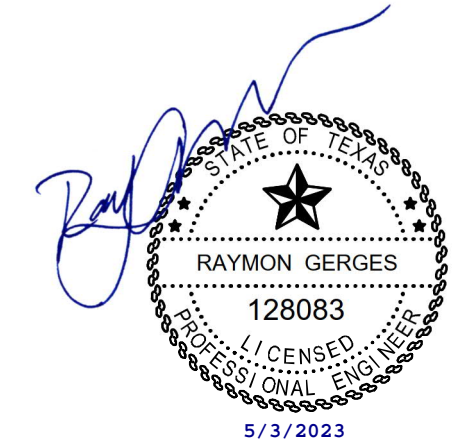


LOCATION MAP
(NOT TO SCALE)
MAPSCO PAGE 746
COUNCIL DISTRICT NO. 6

SHEET INDEX

SHEET NO.	SHEET TITLE
001	COVER SHEET
002	HORIZONTAL CONTROL PLAN 1 OF 2
003	HORIZONTAL CONTROL PLAN 2 OF 2
004	CITY OF FORT WORTH & CONSTRUCTION GENERAL NOTES 1 OF 2
005	CITY OF FORT WORTH & CONSTRUCTION GENERAL NOTES 2 OF 2
006	GAS PIPELINE CROSSING NOTES
007	GENERAL NOTES
008	OFFSITE SEWER SHEET INDEX
009	EASEMENT EXHIBIT
010	SEWER BYPASS EXHIBIT
011	SS-1 STA 10+00 TO 18+00
012	SS-1 STA 18+00 TO 27+00 & SS-16 STA 0+00 TO 0+20
013	SS-1 STA 27+00 TO 36+00
014	SS-1 STA 36+00 TO 46+00
015	SS-1 STA 46+00 TO 56+00
016	SS-1 STA 56+00 TO 65+00
017	SS-1 STA 65+00 TO 75+00
018	SS-10 SS-17 SS-18 SS-19 SS-20
019	SEWER DETAILS I
020	SEWER DETAILS II
021	GABION MATTRESS DETAIL
022	BORING LOG DATA
023	EXAMPLE TRAFFIC CONTROL PLAN
024	TRAFFIC CONTROL PLAN & DETAILS
025	EROSION CONTROL PLAN I
026	EROSION CONTROL PLAN II
027	EROSION CONTROL DETAILS

* THE SHEETS, SPECIFICALLY IDENTIFIED IN THIS INDEX OF SHEETS, HAVE BEEN AUTHORIZED BY ME OR UNDER MY RESPONSIBLE SUPERVISION AS BEING APPLICABLE TO THIS PROJECT



PELTON LAND SOLUTIONS
TEXAS FIRM NO. 12207
THE SEAL APPEARING ON THIS DOCUMENT WAS
AUTHORIZED BY RAYMON GERDES, P.E. # 128083.
ALTERNATION OF A SEALED DOCUMENT WITHOUT PROPER
NOTIFICATION TO THE RESPONSIBLE ENGINEER IS AN
OFFENSE UNDER THE TEXAS ENGINEERING PRACTICE ACT.

OWNED/DEVELOPED BY:
DR HORTON - TX,LTD
6751 NORTH FREEWAY
FORT WORTH, TX 76131
PHONE: 817-230-0800
FAX: 817-230-0899

MAY 2023

PREPARED BY:
PELTON
LAND SOLUTIONS
ENGINEER
PELTON LAND SOLUTIONS
9800 HILLWOOD PKWY., SUITE 250
FORT WORTH, TEXAS 76177
PHONE #: (817) 562-3350
TBPE FIRM NO. 12207

Victor V. Tornero Jr., P.E. May 4, 2023

DIRECTOR'S DESIGNEE FOR CONSTRUCTION PLAN APPROVAL: DATE:
RESOLUTION NO. 01-10-2020
Khal Jaafari, P.E. May 4, 2023
Khal Jaafari, P.E., May 4, 2023 18:00 CDT

REVIEWED: PROJECT MANAGER DATE:

IPRC RECORD NO. IPRC22-0211
CITY PROJECT NO. 104506
FID NO. 30114-0200431-104506-E07685

D:\Projects\104506\104506-C-COVER\OFFSITE\SS 5/3/2023 10:59 AM

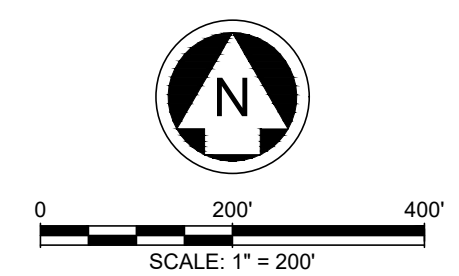
IPRC NO. IPRC22-0211
CITY PROJECT NO. 104506
FID NO. 30114-0200431-104506-E07685
SANITARY SEWER IMPROVEMENTS
ROCK CREEK, PHASE 1 OFFSITE SEWER

NOTE: THE CONTRACTOR SHALL CONTACT THE FOLLOWING AT LEAST 48 HOURS PRIOR TO EXCAVATING IN THIS AREA:

TEXAS 811	1-800-344-8377
ENERGY TRANSFER COMPANY	817-287-8213
SIENERGY	512-615-4545
TXU ELECTRIC DELIVERY	1-800-711-9112
CITY OF FORT WORTH WATER DEPARTMENT	817-392-8296

CONTRACTOR TO FIELD VERIFY ALL EXISTING UTILITIES VERTICALLY AND HORIZONTALLY PRIOR TO CONSTRUCTION.

S.S. LINE "SS-1" MANHOLE STATIONING		S.S. LINE "SS-20" MANHOLE STATIONING		S.S. LINE "SS-10" MANHOLE STATIONING	
1	STA 10+00.00	1	STA 0+00.00	1	STA 0+00.00
2	STA 10+42.31	2	STA 0+90.00	2	STA 0+50.00
3	STA 14+95.60				
4	STA 17+08.01				
5	STA 20+85.45				
6	STA 26+13.73				
7	STA 28+95.34				
8	STA 33+06.61				
9	STA 36+67.22				
10	STA 38+55.62				
11	STA 42+26.49				
12	STA 47+99.22				
13	STA 52+09.47				
14	STA 55+09.22				
15	STA 60+09.78				
16	STA 68+09.78				
17	STA 72+81.19				
18	STA 74+53.01				



LEGEND

	PROPOSED SANITARY SEWER LINE
	PROPOSED SANITARY SEWER SERVICE
	PROPOSED PLUG
	EXISTING SANITARY SEWER LINE
	PROPOSED WATER LINE
	EXISTING WATER LINE
	PROPOSED STORM DRAIN
	SERVICES FOR FUTURE LOTS
	SANITARY SEWER MANHOLE NUMBER
	SHEET NUMBER

- NOTES:**
- ALL PIPE FURNISHED SHALL BE IN CONFORMANCE WITH ASTM D3034 (4-INCH THROUGH 15-INCH) AND ASTM F679, 115PS (18-INCH THROUGH 27-INCH).
 - INSTALL SANITARY SEWER CLEANOUTS ON ALL SERVICES PER DETAIL D-214.
 - ALL MANHOLE LIDS SHALL BE CONSTRUCTED PER DETAIL D-014 AND D-015 UNLESS NOTED OTHERWISE.
 - USE WARREN OR CHESTERTON EPOXY COATING MATERIAL WHERE APPLICABLE.
 - CONTRACTOR TO CONTACT FIELD OPERATOR 72-HR IN ADVANCE. CONTRACTOR TO SUBMIT SHOP DRAWINGS FOR BYPASS.

BENCHMARKS

BM #1 (P2726) - 5/8" IRON ROD WITH RED PLASTIC CAP STAMPED "RANDOLPH" LOCATED ON THE EAST SIDE OF THE TRAFFIC CIRCLE AT THE INTERSECTION OF BREWER BLVD. & WORTH CREEK PKWY. +1-530 NORTHWEST FROM THE CENTERLINE INTERSECTION OF WORTH CREEK PKWY. & TARLETON WAY. +1-90' SOUTH FROM THE SIDEWALK NORTH OF SAID TRAFFIC CIRCLE. & +1-90' WEST FROM THE SIDEWALK EAST OF SAID TRAFFIC CIRCLE. ELEVATION = 798.17'

BM #2 (P2714) - 1/2" MAG NAIL IN PAVEMENT LOCATED AT THE SOUTH END OF OLD GRANBURY RD. +1-5' NORTH FROM THE BARRICADE AT THE SOUTH END OF OLD GRANBURY RD. +1-100' WEST FROM THE WEST CURB LINE OF CHISHOLM TRAIL PKWY. & +1-1150' SOUTHEAST FROM THE BARRICADE AT THE SOUTH END OF WORTH CREEK PKWY. ELEVATION = 830.00'

BM #3 (P2715) - "X" CUT ON THE CONCRETE BASE OF A SANITARY SEWER MANHOLE. LOCATED: +1-75' SOUTH FROM THE NORTHEAST FENCE CORNER OF THE "ROCKY CREEK RANCH" LIFT STATION. +1-30' SOUTHWEST FROM A POWER POLE WITH TRANSFORMER. LOCATED JUST EAST OF SAID LIFT STATION. & +1-580' EAST FROM THE RAILROAD WEST OF THE PROPERTY. ELEVATION = 733.82'

PELTON LAND SOLUTIONS
TEXAS FIRM NO. 12207

THE SEAL APPEARING ON THIS DOCUMENT WAS AUTHORIZED BY RAYMOND GERGES, P.E. # 128083. ALTERATION OF A SEALED DOCUMENT WITHOUT PROPER NOTIFICATION TO THE RESPONSIBLE ENGINEER IS AN OFFENSE UNDER THE TEXAS ENGINEERING PRACTICE ACT.

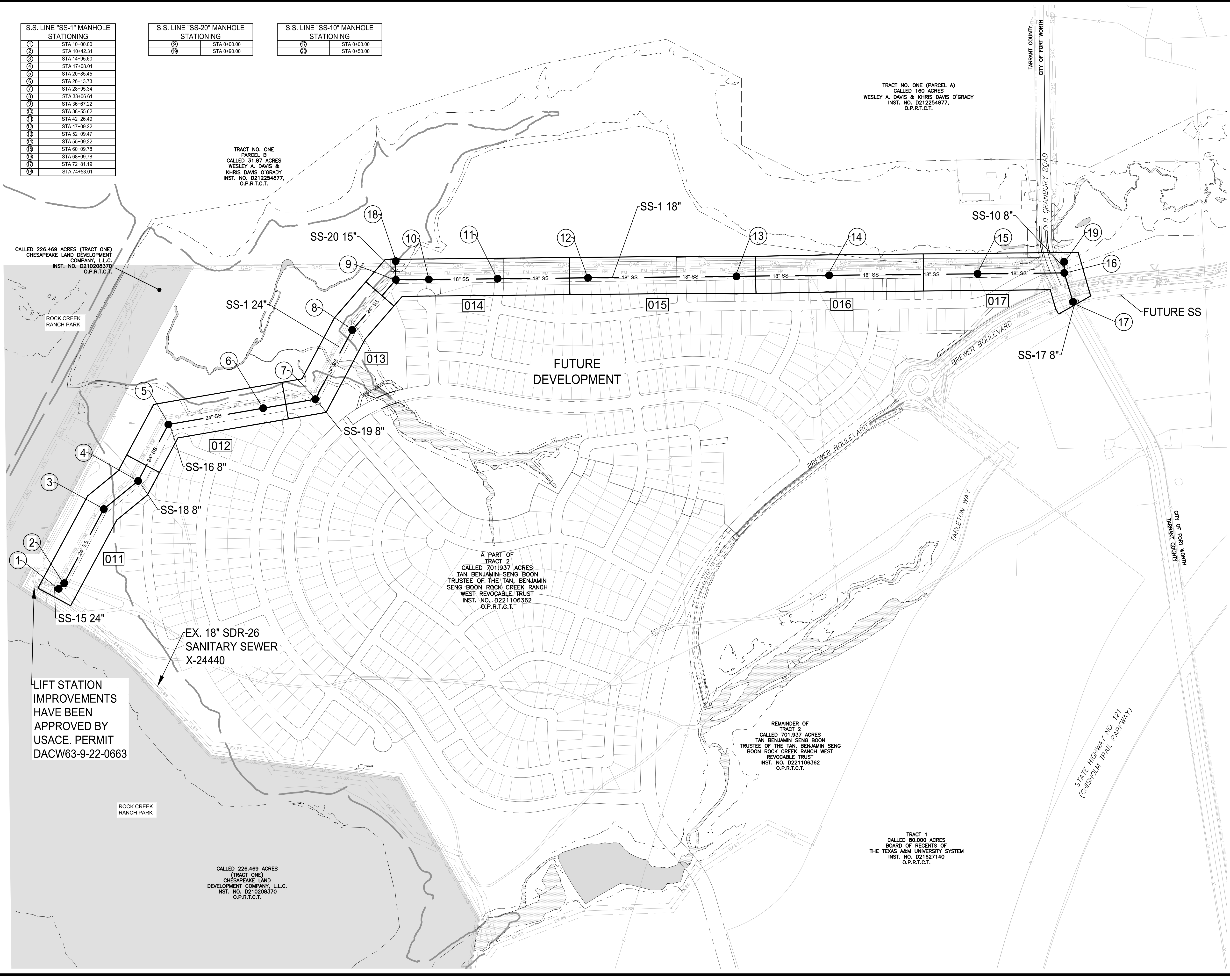
ROCK CREEK PHASE 1 OFFSITE SEWER

OFFSITE SEWER SHEET INDEX

FORT WORTH, TARRANT COUNTY, TEXAS

TEXAS REGISTRATION ENGINEERING FIRM NO. 12207
9800 HILLWOOD PKWY, SUITE 200, FORT WORTH, TEXAS 76177
FORT WORTH PHONE: (817) 562-3350

DRAWN: JRG	DATE: MAY 2023	PROJECT #: DRH19012	SHEET: 008
DESIGNED: JRG			
REVIEWER: RG			



Drawn: G:\DWG\1912_rock_creek_offsite\1912_rock_creek_offsite.dwg
 User: JRG
 Plot Date: 5/3/2023 11:02 AM
 PLOT DATE: 5/3/2023 11:02 AM