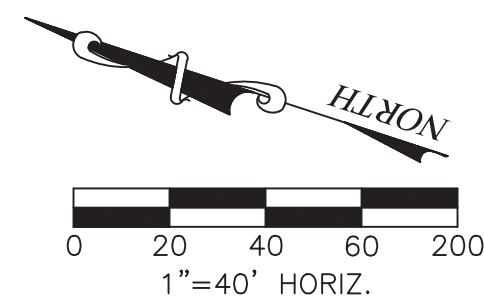


BM #1 = 510.36'  
BOX CUT ON THE NORTH CURB LINE OF  
IVY WAY AT THE END OF CURB, WEST  
SIDE OF PRECINCT LINE ROAD.

BM #2 = 508.10'  
RAILROAD SPIKE SET ON LIGHT POLE  
APPROX. 100 FEET EAST OF PRECINCT  
LINE ROAD AND TRAMMEL DAVIS ROAD.  
LIGHT POLE IS LOCATED ON THE SOUTH  
SIDE OF TRAMMEL DAVIS ROAD

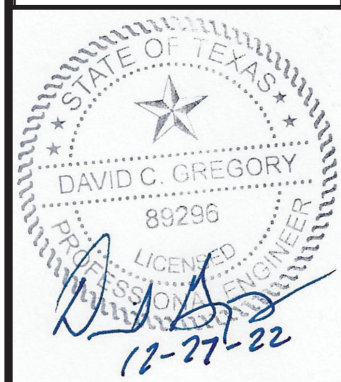


TRINITY LAKES  
MIXED USE SOUTH,  
PHASE 1B  
FORT WORTH, TX

OVERALL  
GRADING PLAN

DCG ENGINEERING

DCG Engineering, Inc.  
1608 Keller Parkway, Suite 100  
Keller, TX 76248  
Phone: (817) 874-2941 or (817) 201-4477  
www.dcgengineering.com  
Engineering Firm Registration Number F-21947



Date: 12/27/22

Scale:

Drawn By:

Reviewed By:

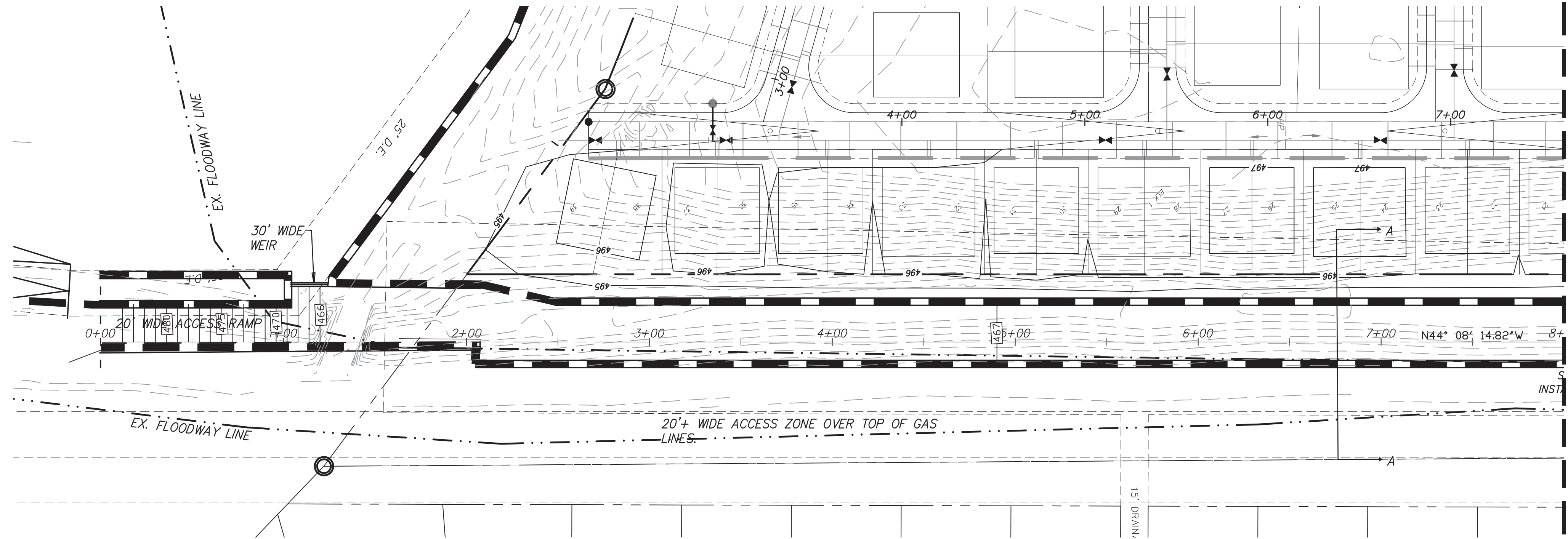
Project: 1001-13

SHEET

C6.1

NO. REVISION BY DATE





MATCH LINE STA 8+00 SEE SHEET C8.6

ALL ADA RAMPS TO BE  
CONSTRUCTED BY DEVELOPER

ALL SIDEWALKS WITH EXCEPTION  
OF HOA LOTS ARE TO BE BUILT  
BY HOMEBUILDER.

NOTES:

ALL CURB INLETS SHALL BE CAST-IN-PLACE

#### WARNING

CONTRACTOR IS TO CONTACT TEXAS ONE-CALL SYSTEM  
(1-800-245-4545) OR OTHER UTILITY LOCATING  
SERVICES AT LEAST 48 HOURS PRIOR TO CONSTRUCTION  
ACTIVITIES. DCG CONSULTING ENGINEERS, INC. IS NOT  
RESPONSIBLE FOR KNOWING ALL EXISTING UTILITIES IN  
THE PROJECT AREA NOR FOR DEPICTING THE EXACT  
LOCATIONS OF UTILITIES ON THESE DRAWINGS.

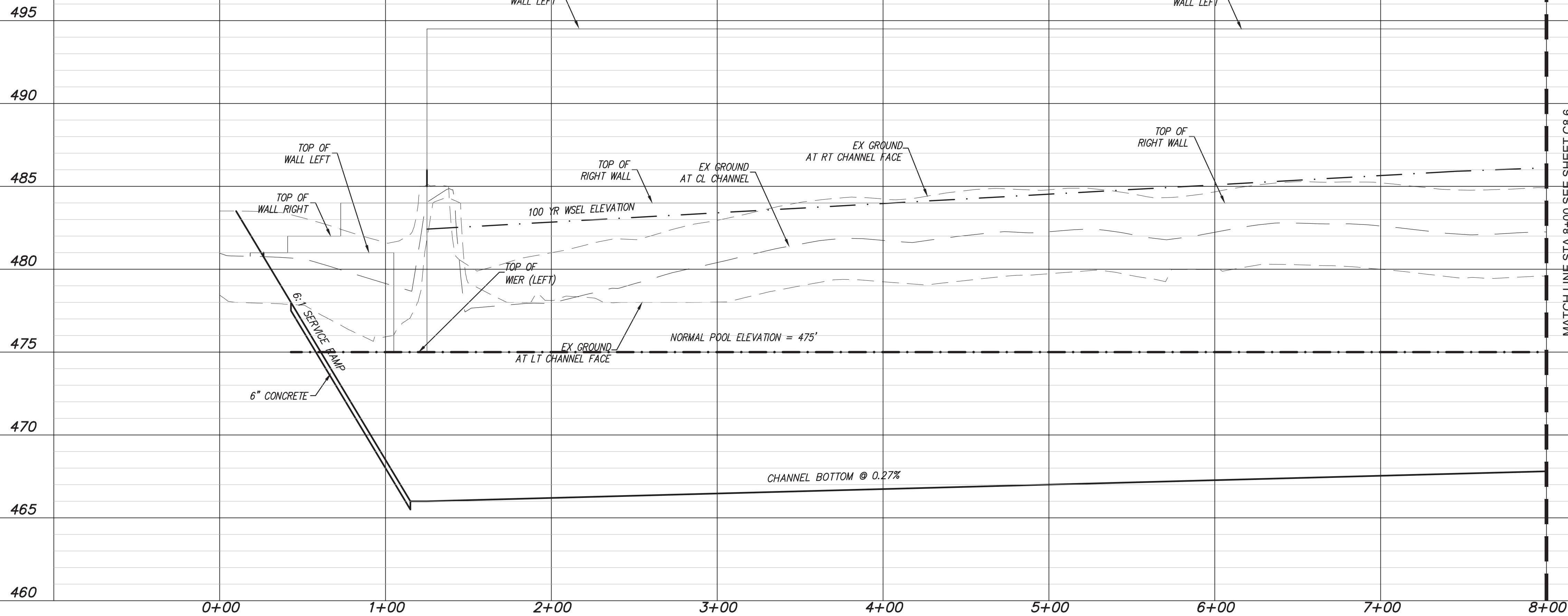
BM #1 = 510.36'

BOX CUT ON THE NORTH CURB LINE OF IVY WAY AT  
THE END OF CURB, WEST SIDE OF PRECINCT LINE ROAD.

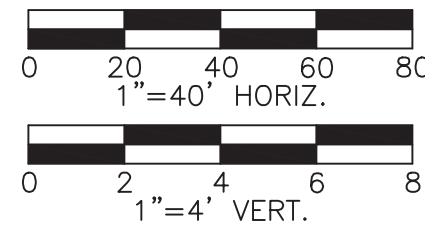
BM #2 = 508.10'

RAILROAD SPIKE SET ON LIGHT POLE APPROX. 100  
FEET EAST OF PRECINCT LINE ROAD AND TRAMMEL  
DAVIS ROAD. LIGHT POLE IS LOCATED ON THE SOUTH  
SIDE OF TRAMMEL DAVIS ROAD

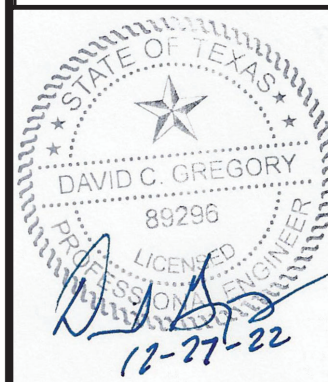
### CHANNEL



MATCH LINE STA 8+00 SEE SHEET C8.6



TRINITY LAKES  
MIXED USE SOUTH,  
PHASE 1B  
FORT WORTH, TX



Date: 12/27/22

Scale:

Drawn By:

Reviewed By:

Project: 1001-13

SHEET

C8.5

DCG ENGINEERING

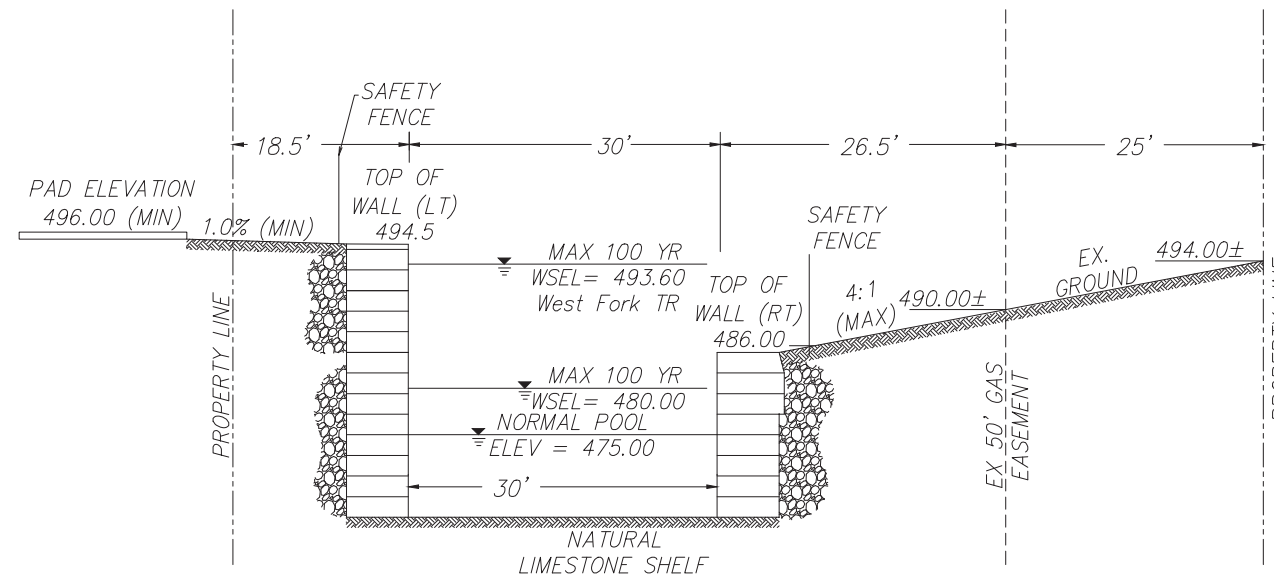
DCG Engineering, Inc.  
1668 Keller Parkway, Suite 100  
Keller, TX 76248  
Phone: (817) 874-2941 or (817) 201-4477  
www.dcgengineering.com  
Engineering Firm Registration Number F-21947

PLAN & PROFILE  
CHANNEL



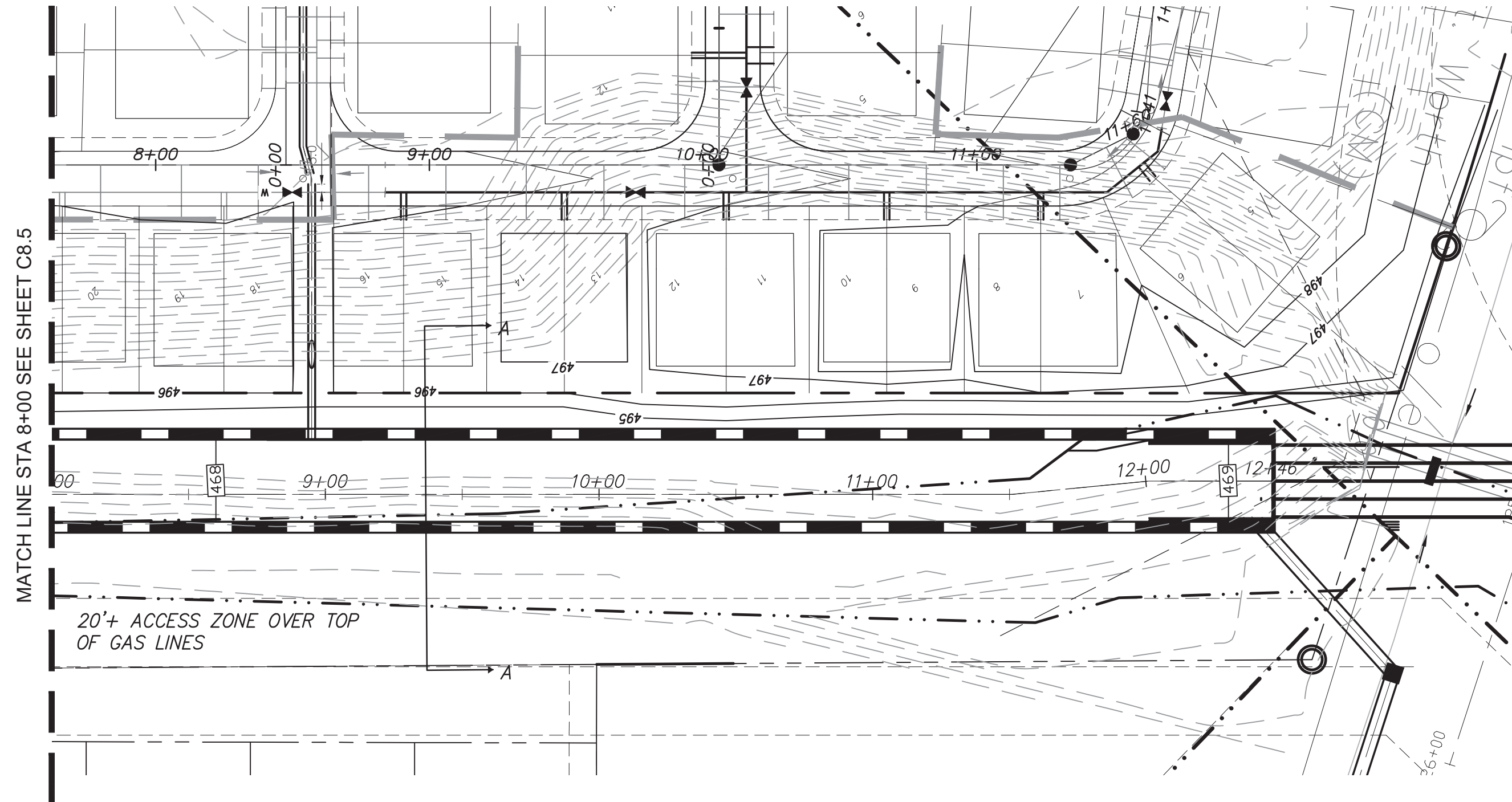
NOTES:

SAFETY FENCE INSTALLED ON BOTH SIDES OF THE CHANNEL WILL CONFORM WITH TXDOT PEDESTRIAN HANDRAIL DETAIL PRD-13 TYPE C RAILING.



CHANNEL SECTION A-A

N.T.S. (LOOKING UPSTREAM)



CHANNEL

ALL ADA RAMPS TO BE CONSTRUCTED BY DEVELOPER

ALL SIDEWALKS WITH EXCEPTION OF HOA LOTS ARE TO BE BUILT BY HOMEBUILDER.

NOTES:

ALL CURB INLETS SHALL BE CAST-IN-PLACE

WARNING

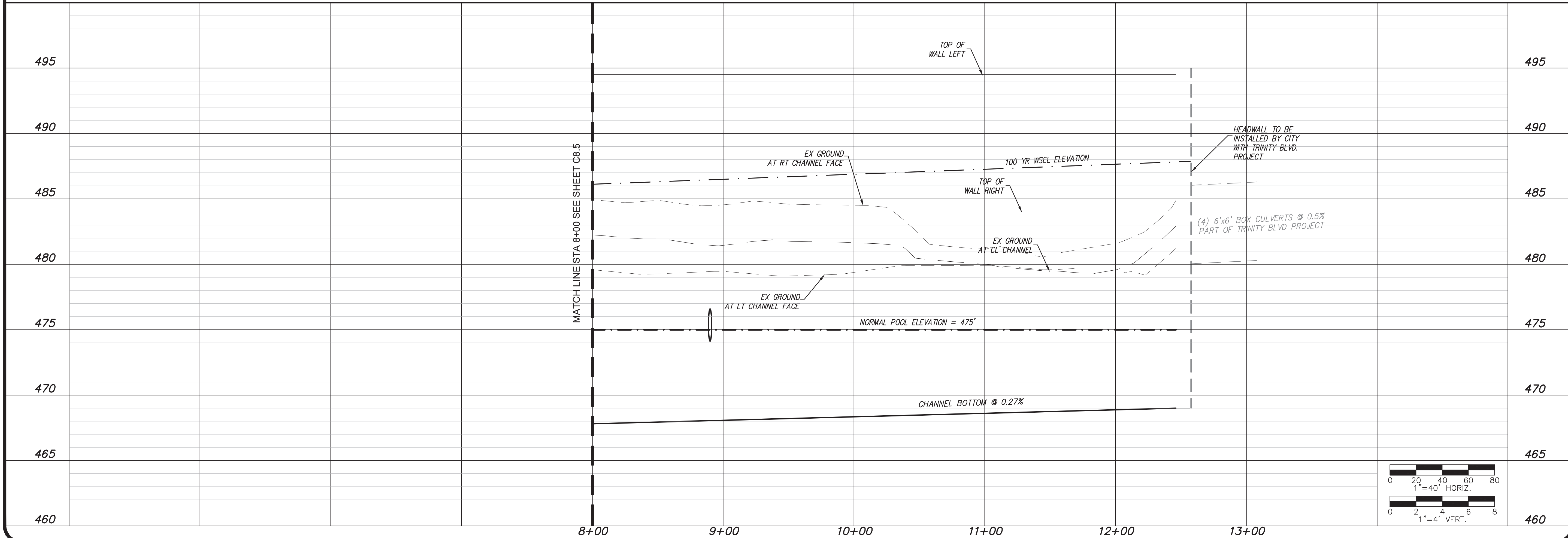
CONTRACTOR IS TO CONTACT TEXAS ONE-CALL SYSTEM (1-800-245-4545) OR OTHER UTILITY LOCATING SERVICES AT LEAST 48 HOURS PRIOR TO CONSTRUCTION ACTIVITIES. DCG CONSULTING ENGINEERS, INC. IS NOT RESPONSIBLE FOR KNOWING ALL EXISTING UTILITIES IN THE PROJECT AREA NOR FOR DEPICTING THE EXACT LOCATIONS OF UTILITIES ON THESE DRAWINGS.

BM #1 = 510.36'

BOX CUT ON THE NORTH CURB LINE OF IVY WAY AT THE END OF CURB, WEST SIDE OF PRECINCT LINE ROAD.

BM #2 = 508.10'

RAILROAD SPIKE SET ON LIGHT POLE APPROX. 100 FEET EAST OF PRECINCT LINE ROAD AND TRAMMEL DAVIS ROAD. LIGHT POLE IS LOCATED ON THE SOUTH SIDE OF TRAMMEL DAVIS ROAD



DCG ENGINEERING

DCG Engineering, Inc.  
1668 Keller Parkway, Suite 100  
Keller, TX 76248  
Phone: (817) 874-2941 or (817) 201-4477  
www.dcgengineering.com  
Engineering Firm Registration Number F-21947

PLAN & PROFILE  
CHANNEL

TRINITY LAKES  
MIXED USE SOUTH,  
PHASE 1B  
FORT WORTH, TX

DAVID C. GREGORY  
80296  
12-27-22

Date: 12/27/22

Scale:

Drawn By:

Reviewed By:

Project: 1001-13

SHEET

C8.6