

MAYOR AND COUNCIL COMMUNICATION MAP

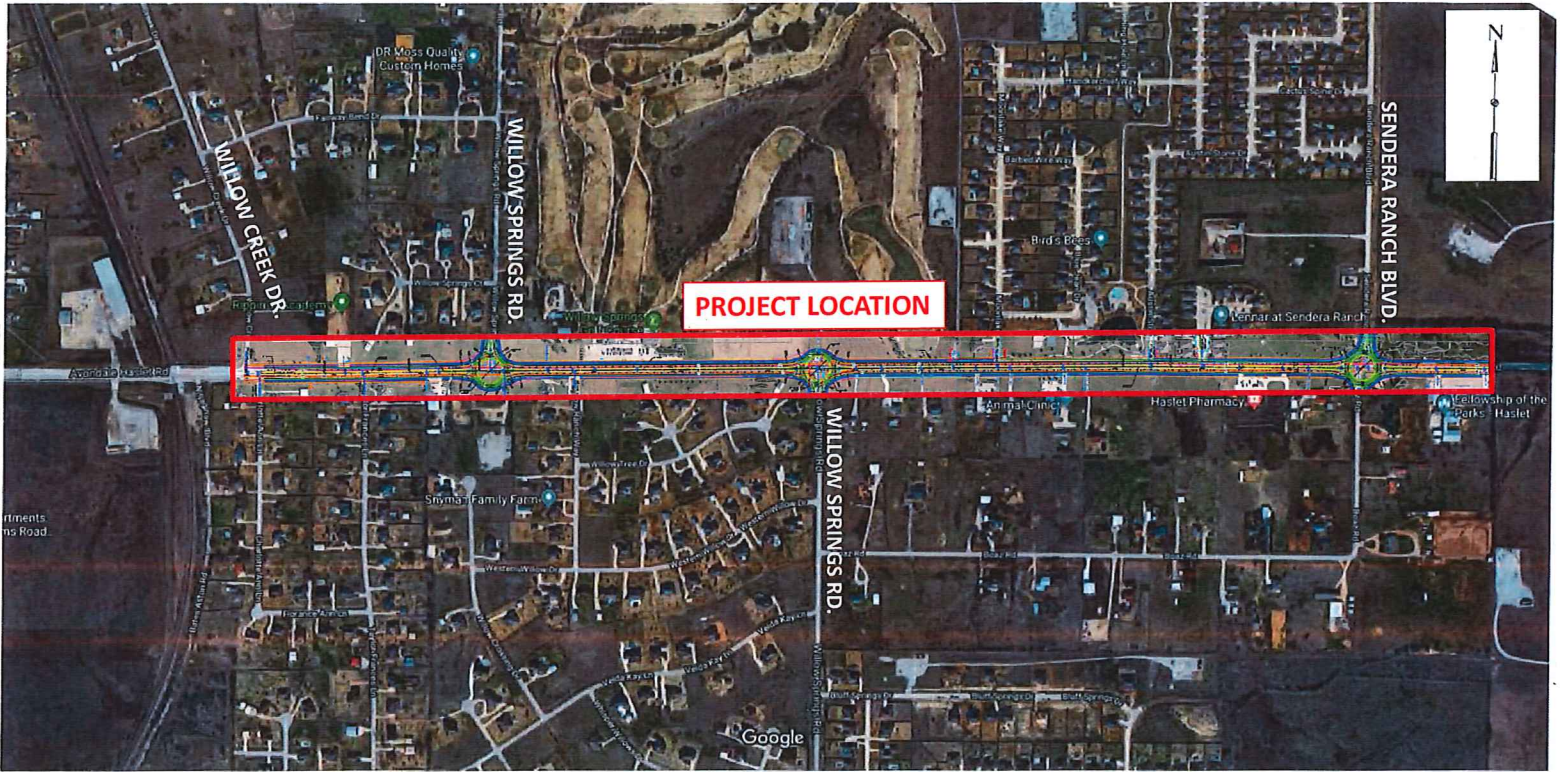
Bonds Ranch Road Transportation Improvements

Hawks Landing Road to FM 156

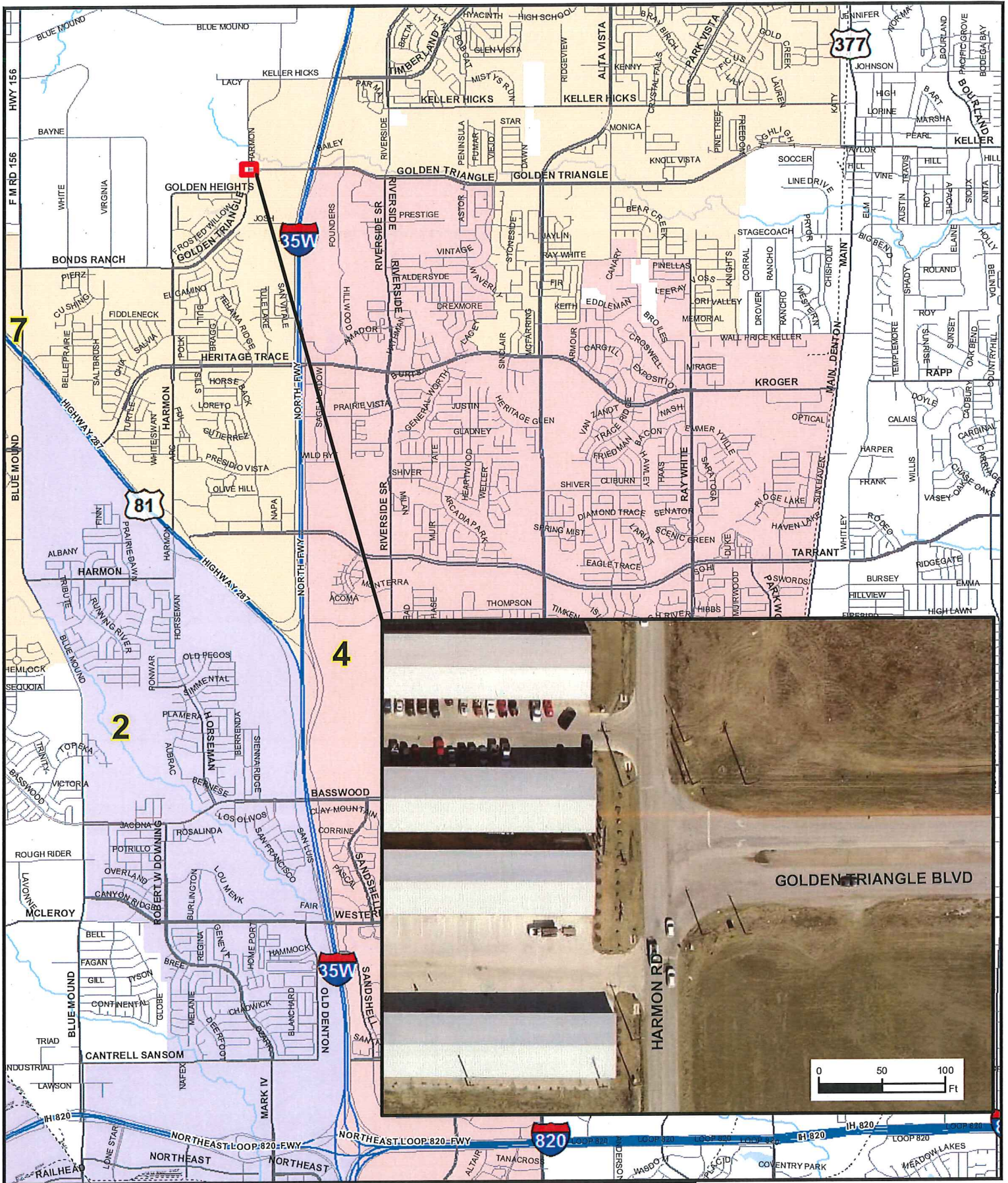


Copyright 2016 City of Fort Worth. Unauthorized reproduction is a violation of applicable laws. This product is for information purposes and may not have been prepared for or be suitable for legal, engineering, or surveying purposes. It does not represent an on-the-ground survey and represents only the approximate relative location of property boundaries. The City of Fort Worth assumes no responsibility for the accuracy of said data.

AVONDALE-HASLET ROAD PROJECT MAP
CITY PROJECT No. 101014 (Mapsco 5T, 5U, & 5V)

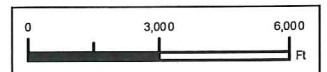


MAYOR AND COUNCIL COMMUNICATION MAP



Golden Triangle Boulevard and Harmon Road

Copyright 2018 City of Fort Worth. Unauthorized reproduction is a violation of applicable laws. This product is for informational purposes and may not have been prepared for or be suitable for legal, engineering, or surveying purposes. It does not represent an on-the-ground survey and represents only the approximate relative location of property boundaries. The City of Fort Worth assumes no responsibility for the accuracy of said data.

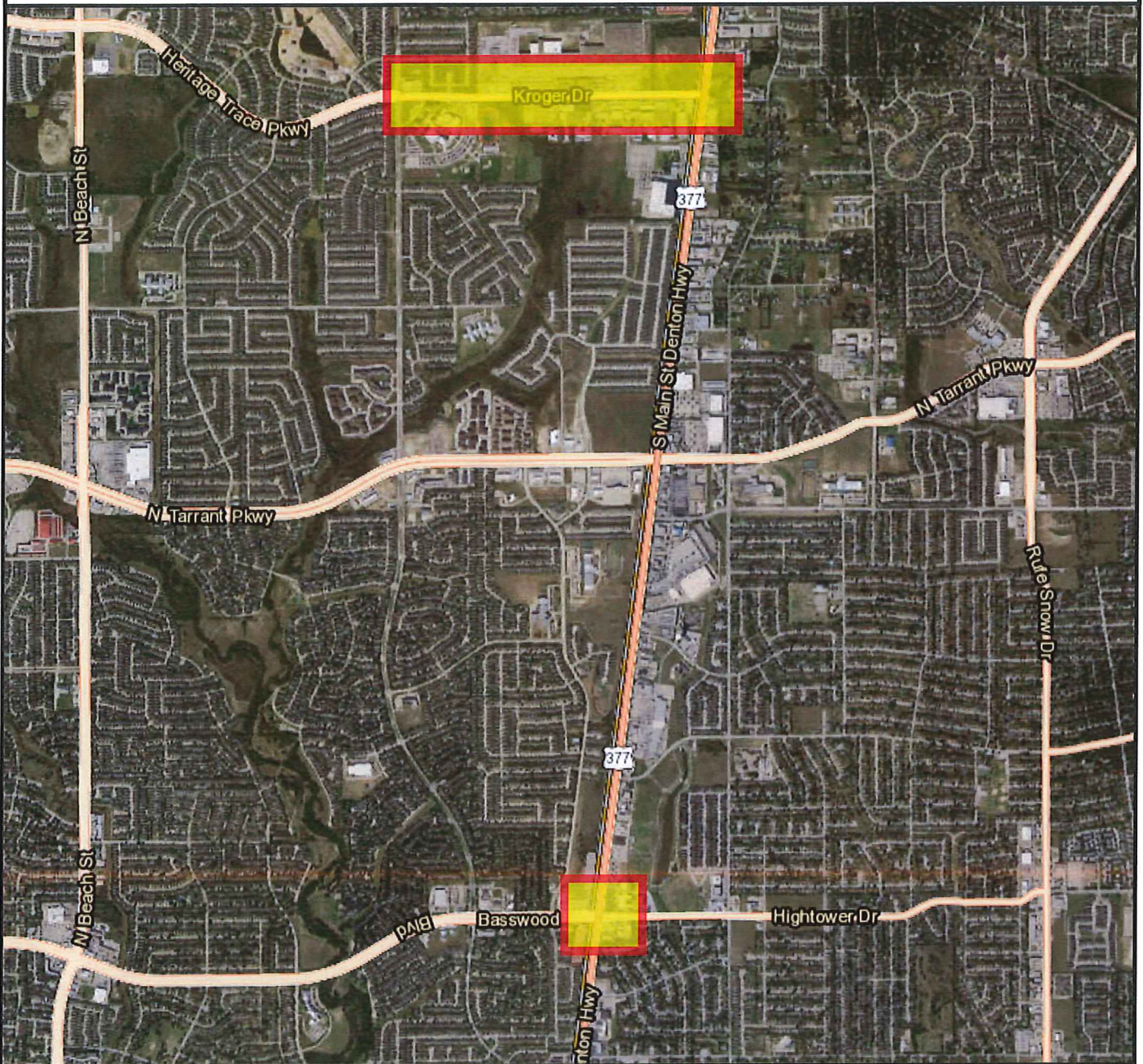


ATTACHMENT E: PROJECT LOCATION MAP



City of Fort Worth- CPN 101015
US 377 at Basswood and Kroger Drive

6100 Western Place | STE 1001
Fort Worth, TX 76107
(817) 412-7155



0 1,000
Feet
1 inch = 2,500 feet

NOTES

BACKGROUND IMAGE FROM
ESRI AERIALS



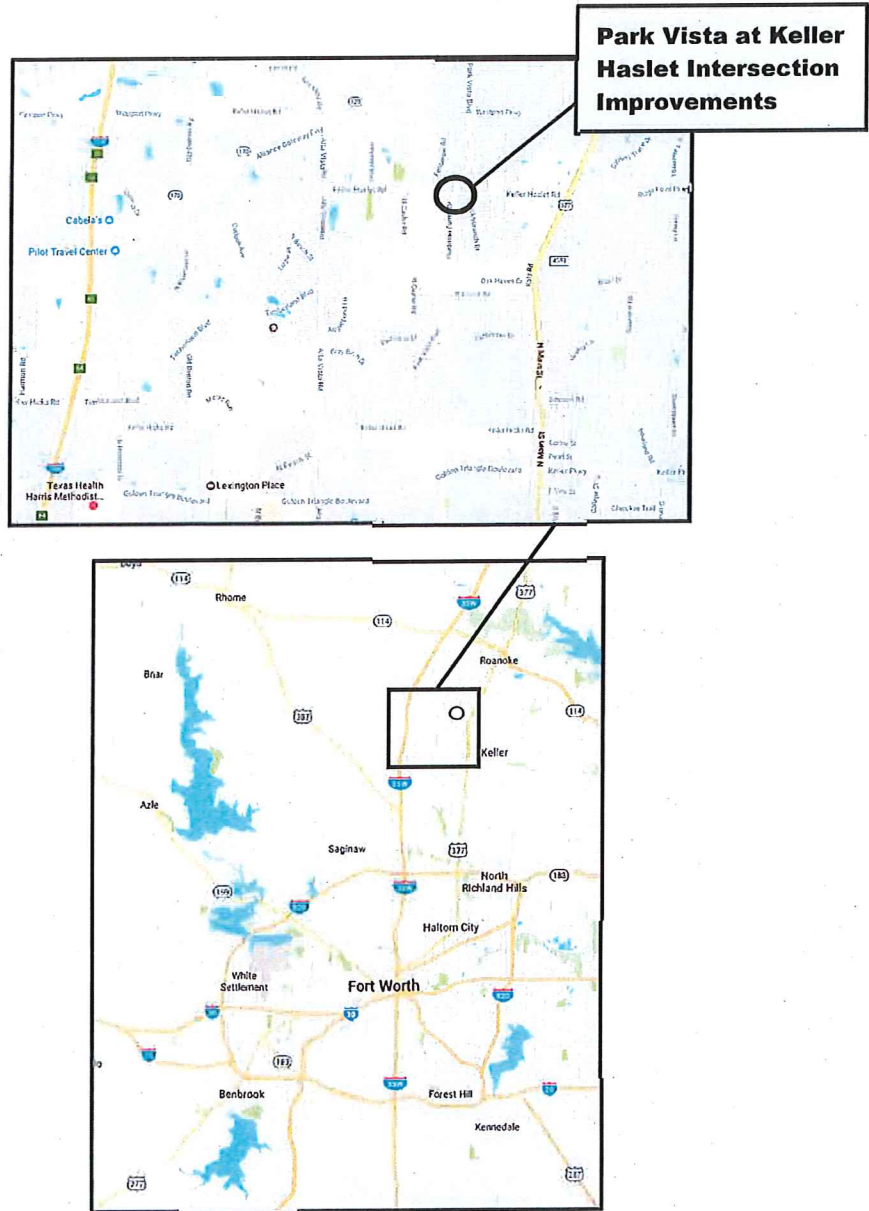
PROJECT LOCATION

DATUM

NAD 1983 TEXAS STATE PLANE
NORTH CENTRAL ZONE FIPS 4202

Attachment E
Location Map

Design Services for
Park Vista at Keller Haslet Intersection Improvements
City Project No. 101020
Lee Engineering, LLC



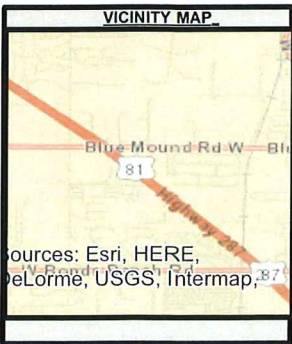
Attachment E: Project Location Map

City of Fort Worth - Blue Mound Road and Willow Springs Road

6100 WESTERN PLACE, SUITE 1001
 FORT WORTH, TX 76107
 PHONE: (817) 412-7155



Source: Esri, DigitalGlobe, GeoEye, Earthstar Geographics, CNES/Airbus DS, USDA, USGS, AEX, Getmapping, Aerogrid, IGN, IGP, swisstopo, and the GIS User Community, Esri, HERE, DeLorme, MapmyIndia, © OpenStreetMap contributors

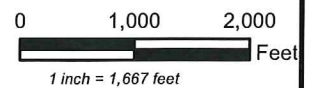


NOTES

BACKGROUND IMAGE FROM BING AERIALS

DATUM

NAD 1983 TEXAS STATE PLANE NORTH CENTRAL ZONE FIPS 4202



January 11, 2018

SIGNAL AND INTERSECTION IMPROVEMENT KELLER HICKS RD AT KATY RD

District 7
Dennis Shingleton

KELLER HICKS RD



Keller

INTERSECTION
IMPROVEMENTS

KATY RD

N HWY 377 N MAIN ST

