

THE CITY OF FORT WORTH, TEXAS PLANS FOR THE CONSTRUCTION OF WATER, SEWER, PAVING, DRAINAGE & STREET LIGHT IMPROVEMENTS TO SERVE

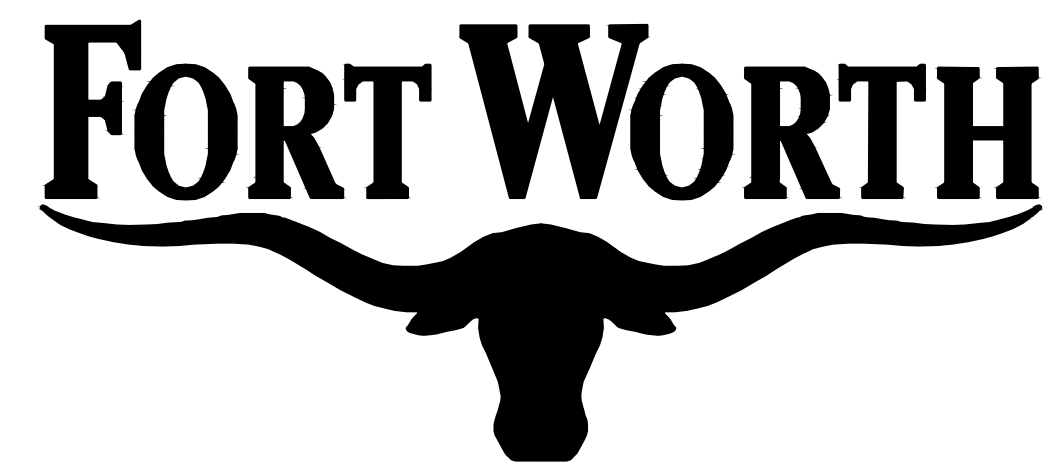
CURRENT CONSTRUCTION STANDARDS FOR DEVELOPMENTS MARCH 11, 2022, SHALL GOVERN ON THIS PROJECT.

UTILS
P & G
✓

IPRC RECORD NO. 22-0154
CITY PROJECT NO. 104143

FID NO. 30114-0200431-104143-E07685

WATER, SEWER, PAVING, STORM DRAINAGE & STREET LIGHT IMPROVEMENTS TO SERVE:
PECAN MEADOWS



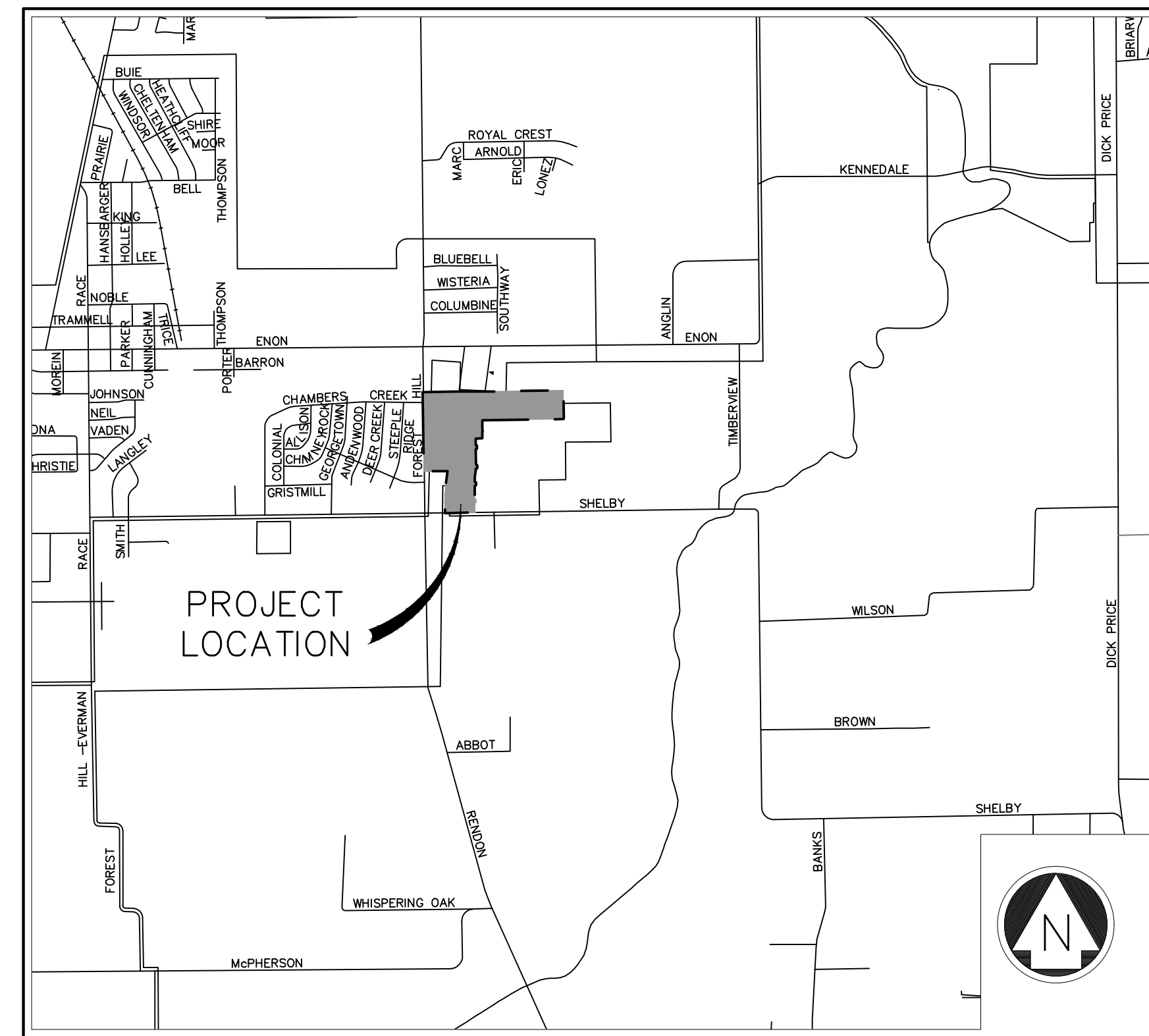
PECAN MEADOWS PHASE 1

MATTIE PARKER
MAYOR

DAVID COOKE
CITY MANAGER

MICHAEL OWEN, P.E.
CITY ENGINEER, TRANSPORTATION
AND PUBLIC WORKS DEPARTMENT

CHRISTOPHER P. HARDER, P.E.
DIRECTOR, WATER DEPARTMENT



LOCATION MAP
1" = 2000'

MAPSCO NO. 33S
COUNCIL DISTRICT 7

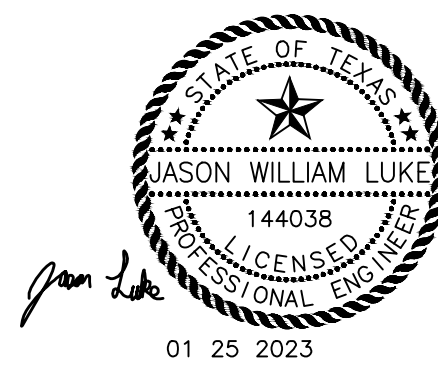
UNIT I - WATER & SEWER IMPROVEMENTS

SHEET NO.	DESCRIPTION
1	COVER SHEET
2	SHEET INDEX
3-4.	DRAFT HORIZONTAL CONTROL PLAN
5	KEY MAP
6	OVERALL WATER PLAN
7-12.	WATER PLAN
13-14.	WATER PLAN & PROFILE - WL-1
15	OVERALL SANITARY SEWER PLAN
16-25.	SANITARY SEWER PLANS & PROFILES
26-29.	WATER DETAILS
30-31.	SEWER DETAILS
32	GENERAL UTILITY DETAIL
34	COFW GEN NOTES
35	GEN CONSTRUCTION NOTES - W

UNIT II - DRAINAGE & PAVING IMPROVEMENTS

SHEET NO.	DESCRIPTION
36-43	GRADING PLAN
45	EXISTING DRAINAGE AREA MAP
46	PROPOSED DRAINAGE AREA MAP
47	ULTIMATE DRAINAGE AREA MAP
48-50	DRAINAGE AREA CALCULATIONS
51-61	STORM DRAIN PLANS & PROFILES
62	DETENTION POND PLAN
63-71	PAVING PLANS & PROFILES
72-73	SIDEWALK & SIGNAGE PLAN
74-75	STREETLIGHT & CONDUIT PLAN
76-80	PAVING DETAILS
81-82	SIDEWALK & BFR DETAILS
83-84	STREET LIGHT DETAILS
85	SIGN POST DETAILS
86-89	STORM DRAIN DETAILS
90	ISWM CONSTRUCTION PLAN
91-92	ISWM-T&PW DETAILS
93-94	CITY OF FORT WORTH GENERAL NOTES - TRANSPORTATION
95	GENERAL CONSTRUCTION NOTES

OWNED/DEVELOPED BY:
LENNAR HOMES OF TEXAS LAND AND
CONSTRUCTION, LTD.
1707 MARKET PLACE BLVD.
SUITE 210
IRVING, TX 75063
PHONE: (469)-587-5206



IPRC RECORD NO. 22-0154
CITY PROJECT NO. 104143
FID NO. 30114-0200431-104143-E07685
FILE NO: W-2874

JANUARY 2023

LJA Engineering, Inc.

3017 W. 7th Street
Suite 300
Fort Worth, Texas 76107



Phone 469.621.0710
FRN - F-1386

DIRECTOR'S DESIGNEE FOR
CONSTRUCTION PLAN APPROVAL
RESOLUTION NO. 01-10-2020

DATE:

REVIEWED
PROJECT MANAGER

DATE:

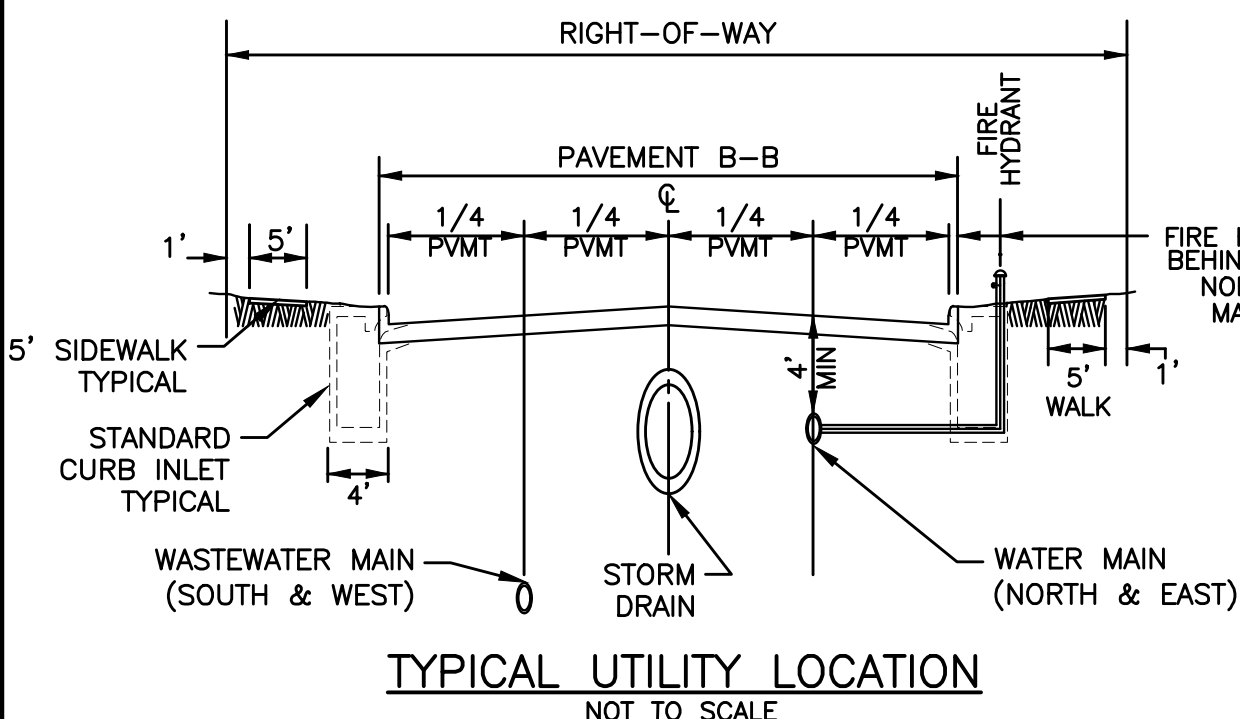
X-27477

NOTE: THE CONTRACTOR SHALL CONTACT THE FOLLOWING AT LEAST 48 HOURS PRIOR TO EXCAVATING IN THIS AREA:

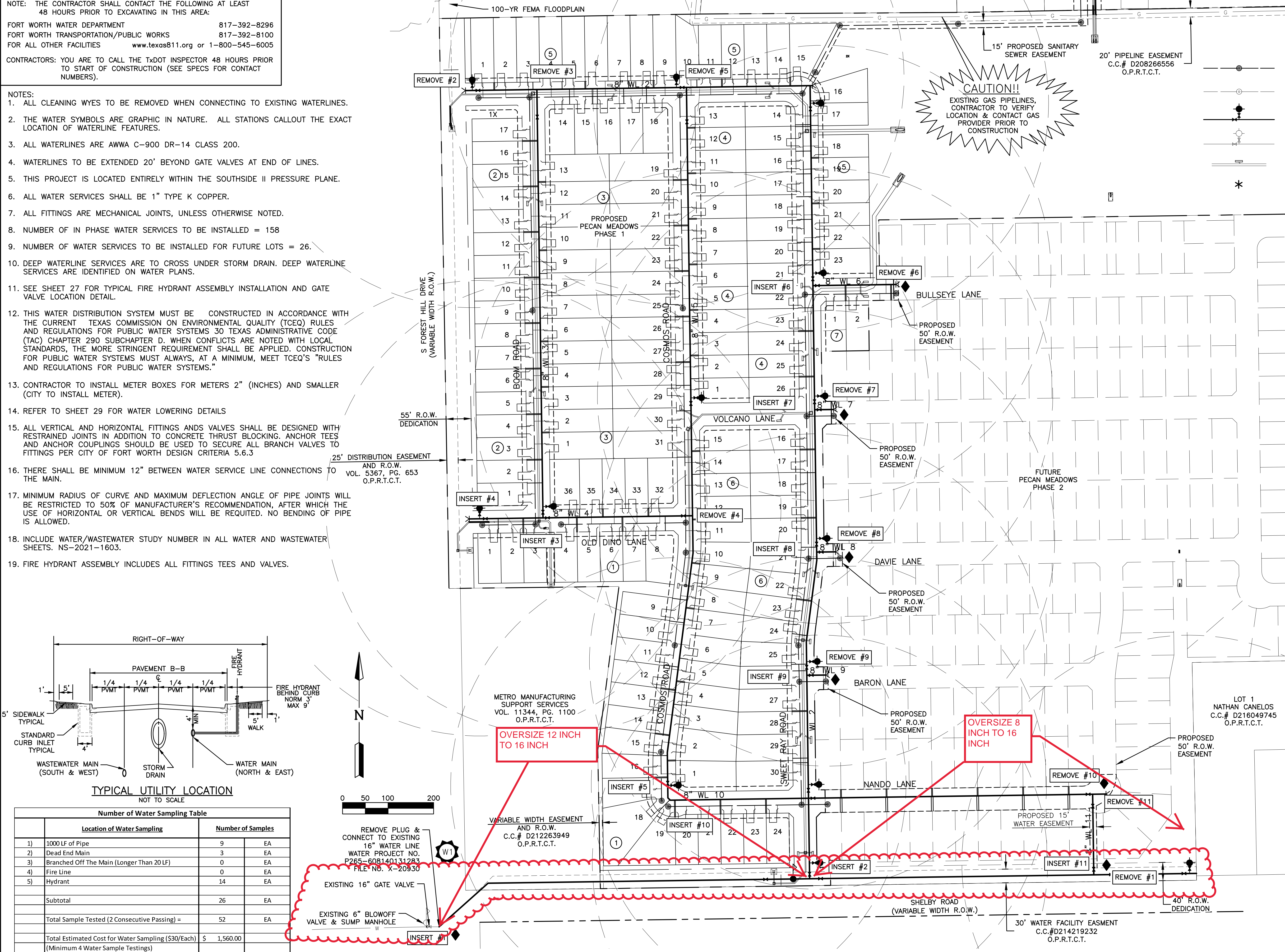
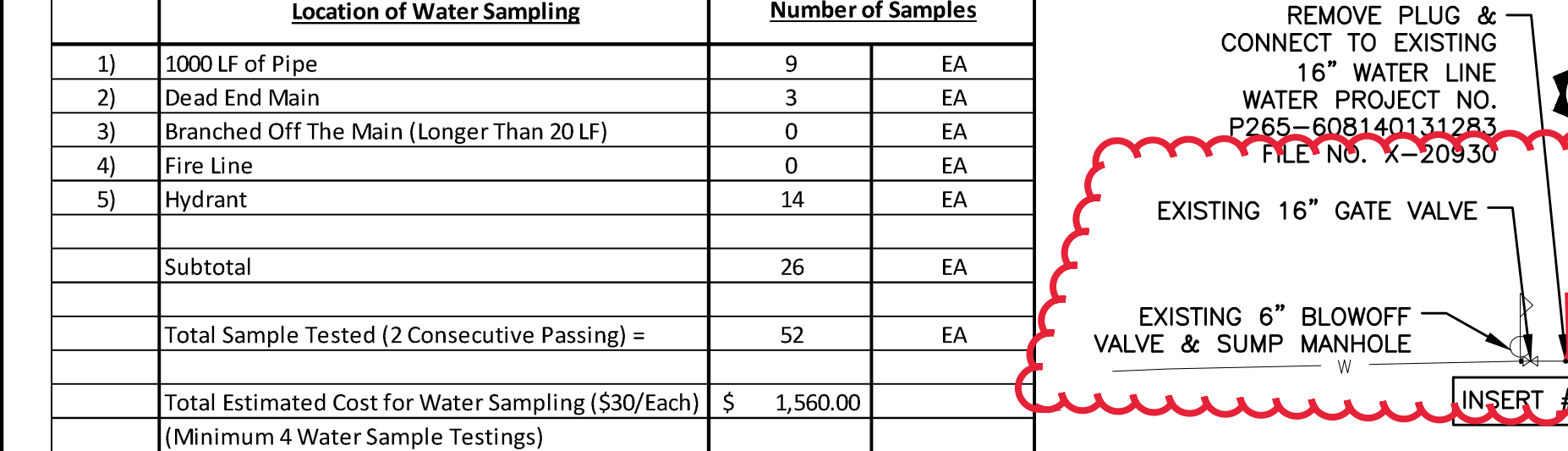
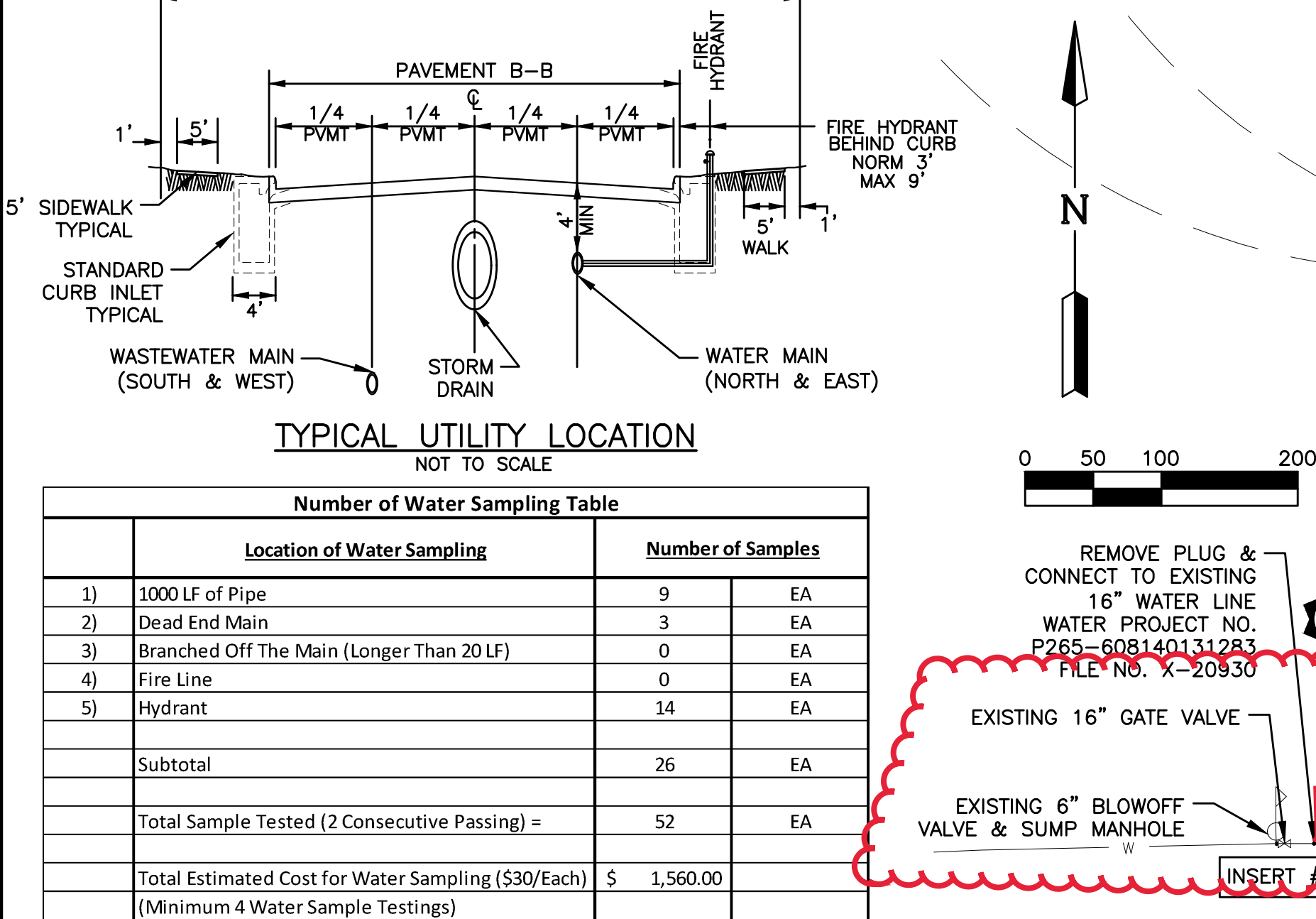
FORT WORTH WATER DEPARTMENT 817-392-8296
 FORT WORTH TRANSPORTATION/PUBLIC WORKS 817-392-8100
 FOR ALL OTHER FACILITIES www.texas811.org or 1-800-545-6005

CONTRACTORS: YOU ARE TO CALL THE TxDOT INSPECTOR 48 HOURS PRIOR TO START OF CONSTRUCTION (SEE SPECS FOR CONTACT NUMBERS).

- NOTES:
- ALL CLEANING WYES TO BE REMOVED WHEN CONNECTING TO EXISTING WATERLINES.
 - THE WATER SYMBOLS ARE GRAPHIC IN NATURE. ALL STATIONS CALLOUT THE EXACT LOCATION OF WATERLINE FEATURES.
 - ALL WATERLINES ARE AWWA C-900 DR-14 CLASS 200.
 - WATERLINES TO BE EXTENDED 20' BEYOND GATE VALVES AT END OF LINES.
 - THIS PROJECT IS LOCATED ENTIRELY WITHIN THE SOUTHSIDE II PRESSURE PLANE.
 - ALL WATER SERVICES SHALL BE 1" TYPE K COPPER.
 - ALL FITTINGS ARE MECHANICAL JOINTS, UNLESS OTHERWISE NOTED.
 - NUMBER OF IN PHASE WATER SERVICES TO BE INSTALLED = 158
 - NUMBER OF WATER SERVICES TO BE INSTALLED FOR FUTURE LOTS = 26.
 - DEEP WATERLINE SERVICES ARE TO CROSS UNDER STORM DRAIN. DEEP WATERLINE SERVICES ARE IDENTIFIED ON WATER PLANS.
 - SEE SHEET 27 FOR TYPICAL FIRE HYDRANT ASSEMBLY INSTALLATION AND GATE VALVE LOCATION DETAIL.
 - THIS WATER DISTRIBUTION SYSTEM MUST BE CONSTRUCTED IN ACCORDANCE WITH THE CURRENT TEXAS COMMISSION ON ENVIRONMENTAL QUALITY (TCEQ) RULES AND REGULATIONS FOR PUBLIC WATER SYSTEMS 30 TEXAS ADMINISTRATIVE CODE (TAC) CHAPTER 290 SUBCHAPTER D. WHEN CONFLICTS ARE NOTED WITH LOCAL STANDARDS, THE MORE STRINGENT REQUIREMENT SHALL BE APPLIED. CONSTRUCTION FOR PUBLIC WATER SYSTEMS MUST ALWAYS, AT A MINIMUM, MEET TCEQ'S "RULES AND REGULATIONS FOR PUBLIC WATER SYSTEMS."
 - CONTRACTOR TO INSTALL METER BOXES FOR METERS 2" (INCHES) AND SMALLER (CITY TO INSTALL METER).
 - REFER TO SHEET 29 FOR WATER LOWERING DETAILS
 - ALL VERTICAL AND HORIZONTAL FITTINGS AND VALVES SHALL BE DESIGNED WITH RESTRAINED JOINTS IN ADDITION TO CONCRETE THRUST BLOCKING. ANCHOR TEES AND ANCHOR COUPLINGS SHOULD BE USED TO SECURE ALL BRANCH VALVES TO FITTINGS PER CITY OF FORT WORTH DESIGN CRITERIA 5.6.3
 - THERE SHALL BE MINIMUM 12" BETWEEN WATER SERVICE LINE CONNECTIONS TO THE MAIN.
 - MINIMUM RADIUS OF CURVE AND MAXIMUM DEFLECTION ANGLE OF PIPE JOINTS WILL BE RESTRICTED TO 50% OF MANUFACTURER'S RECOMMENDATION, AFTER WHICH THE USE OF HORIZONTAL OR VERTICAL BENDS WILL BE REQUIRED. NO BENDING OF PIPE IS ALLOWED.
 - INCLUDE WATER/WASTEWATER STUDY NUMBER IN ALL WATER AND WASTEWATER SHEETS. NS-2021-1603.
 - FIRE HYDRANT ASSEMBLY INCLUDES ALL FITTINGS TEES AND VALVES.



Number of Water Sampling Table		
Location of Water Sampling	Number of Samples	
1) 1000 LF of Pipe	9	EA
2) Dead End Main	3	EA
3) Branched Off The Main (Longer Than 20 LF)	0	EA
4) Fire Line	0	EA
5) Hydrant	14	EA
Subtotal	26	EA
Total Sample Tested (2 Consecutive Passing) =	52	EA
Total Estimated Cost for Water Sampling (\$30/Each)	\$ 1,560.00	
(Minimum 4 Water Sample Testings)		



- LEGEND
- PROPOSED SANITARY SEWER WITH MANHOLE
 - EXISTING SANITARY SEWER WITH MANHOLE
 - PROPOSED WATER LINE WITH FIRE HYDRANT
 - EXISTING WATER LINE WITH FIRE HYDRANT
 - STORM DRAIN SYSTEM WITH INLET
 - NON-TYPICAL SERVICE LOCATION

CONNECT TO WATER LINE (UNDER CONSTRUCTION)
 WPN P265-608140131283
 FILE NO. X-20930

INSERT # - INSERT POLY PIG

REMOVE # - REMOVE POLY PIG
 INSTALL CLEANING WYE
 REMOVE CLEANING WYE AFTER COMPLETION OF PIPE CLEANING



BENCHMARKS:

"X" CUT ON TOP OF A DROP INLET LOCATED ON THE SOUTH SIDE OF E. ENON AVENUE, APPROXIMATELY 1,100 FEET EAST OF THE INTERSECTION OF E. ENON AVENUE AND FOREST HILL DRIVE. ELEV 615.30

MAG NAIL IN NORTHWEST CORNER OF ASPHALT PARKING LOT LOCATED APPROXIMATELY 270 FEET NORTH OF SHELBY ROAD AND 60 FEET EAST OF FOREST HILL DRIVE. ELEV 629.87

DATE	REVISION	BY

OVERALL WATER PLAN

Pecan Meadows Phase 1

CITY OF FORT WORTH
TARRANT COUNTY, TEXAS

LJA Engineering, Inc.
 3017 W 7th Street
 Suite 300
 Fort Worth, Texas 76107
 Phone 817.288.1900
 FRN - F-1386

LJA PROJECT ID NT600-0178

DATE: JAN 2023

DESIGN: KLOPP

DRAWN: VANTREASE

SCALE: 1"=100'

HORZ: N/A

VERT: N/A

SHEET 6

OF 95 SHEETS

1/25/2023

Date: Time: Wed, 25 Jun 2023 8:25:05am User: Name: Title: Files: Pecan Meadows Phase 1\01781\W1.dwg
 Path: Name: SANITARY\LAND\01781\01781.dwg LAND\01781.dwg Design: Files: Pecan Meadows Phase 1\01781\W1.dwg

PECAN MEADOWS PHASE 1