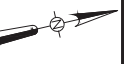


NOTES

1. CONTRACTOR TO COORDINATE WITH TOTAL E&P USA BARRETT, LLC FOR NEW LOCATION OF SOLAR PANELS.

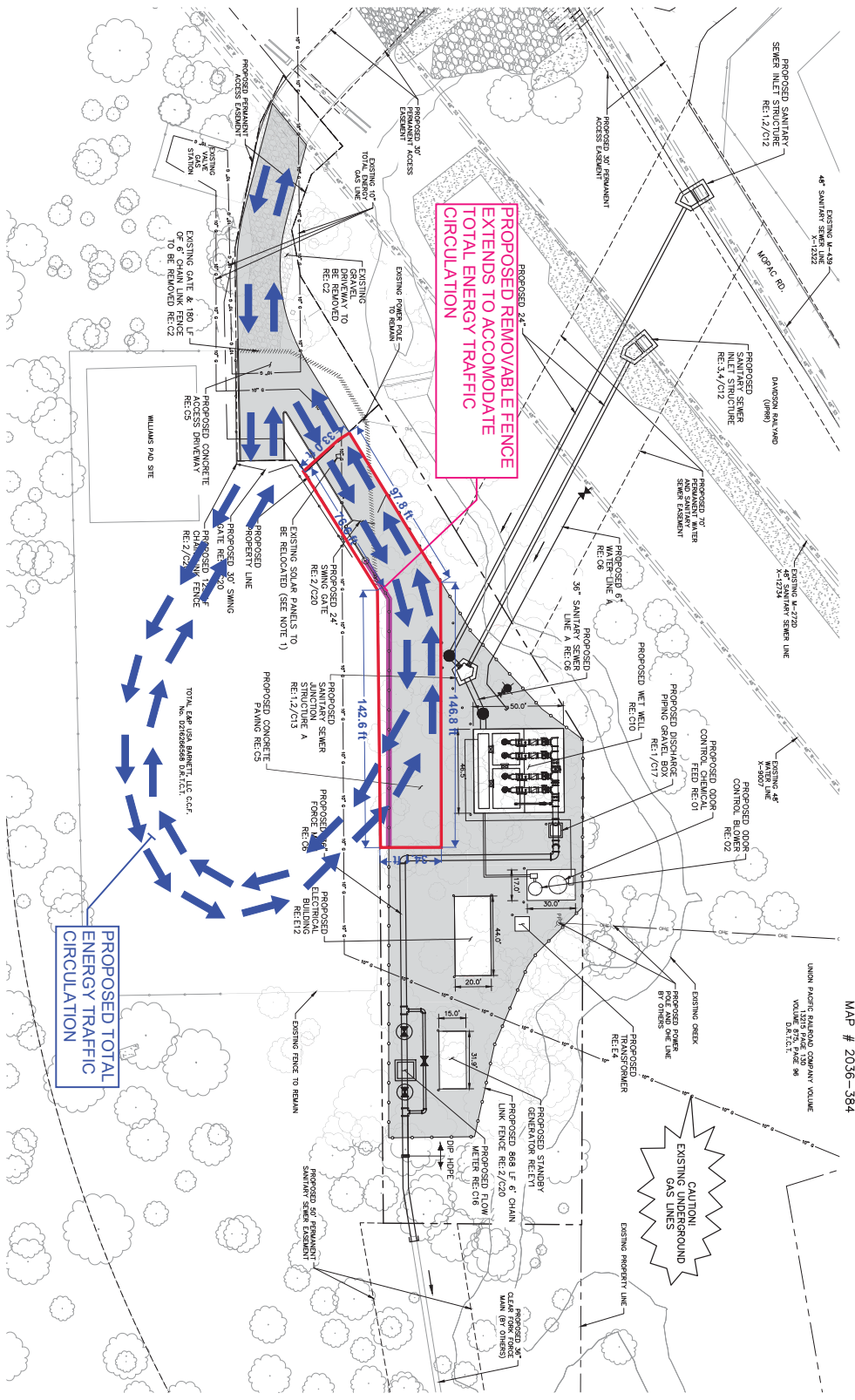
Exhibit E

MAP # 2042-384
MAP # 2036-384



LEGEND

- PROPOSED CONCRETE
- PROPOSED FENCE AND GATE
- PROPOSED REMOVABLE FENCE
- PROPOSED ENERGY TRAFFIC CIRCULATION



NOTES

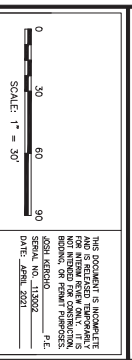
- ALL REFERENCED DETAILS SHOULD BE CITY OF FORT WORTH STANDARD DETAILS UNLESS NOTED OTHERWISE.
- THE CONTRACTOR SHALL BE RESPONSIBLE FOR OBTAINING ALL THE INFORMATION AND DATA SHOWN WITH RESPECT TO EXISTING UNDERGROUND UTILITIES AND CONDITIONS NOTED BY THE OWNERS OF SUCH UNDERGROUND UTILITIES OR ON OWNER AND ENGINEER SAID NOT BE RESPONSIBLE FOR THE ACCURACY OR COMPLETENESS OF ANY SUCH INFORMATION OR FOR REVIEWING AND CHECKING ALL SUCH INFORMATION AND DATA FOR LOCATING ALL UNDERGROUND FACILITIES, FOR UNDERGROUND UTILITIES DURING CONSTRUCTION, AND FOR THE SAFETY AND PROTECTION THEREOF AND REPAIRING ANY DAMAGE TO UNDERGROUND UTILITIES OR FACILITIES. THE CONTRACTOR SHALL NOTIFY ANY ALL UTILITIES HAVING BEEN CONSIDERED AS HAVING BEEN INCLUDED IN THE CONTRACT PRIOR TO CONSTRUCTION. THE CONTRACTOR SHALL NOTIFY ANY AT LEAST 48 HOURS PRIOR TO CONSTRUCTION.

WARNING

THE LOCATION AND DIMENSIONS UTILITIES SHOWN ON THE PLANS ARE APPROXIMATE AND WERE OBTAINED FROM UTILITY COMPANY RECORDS. IT IS THE CONTRACTOR'S SOLE RESPONSIBILITY TO VERIFY THE LOCATION, DEPTH AND DIMENSION OF EXISTING UTILITIES PRIOR TO CONSTRUCTION. THE CONTRACTOR SHALL BE RESPONSIBLE FOR OBTAINING ALL INFORMATION AND DATA SHOWN WITH RESPECT TO EXISTING UNDERGROUND UTILITIES AND CONDITIONS NOTED BY THE OWNERS OF SUCH UNDERGROUND UTILITIES OR ON OWNER AND ENGINEER SAID NOT BE RESPONSIBLE FOR THE ACCURACY OR COMPLETENESS OF ANY SUCH INFORMATION OR FOR REVIEWING AND CHECKING ALL SUCH INFORMATION AND DATA FOR LOCATING ALL UNDERGROUND FACILITIES, FOR UNDERGROUND UTILITIES DURING CONSTRUCTION, AND FOR THE SAFETY AND PROTECTION THEREOF AND REPAIRING ANY DAMAGE TO UNDERGROUND UTILITIES OR FACILITIES. THE CONTRACTOR SHALL NOTIFY ANY ALL UTILITIES HAVING BEEN CONSIDERED AS HAVING BEEN INCLUDED IN THE CONTRACT PRIOR TO CONSTRUCTION. THE CONTRACTOR SHALL NOTIFY ANY AT LEAST 48 HOURS PRIOR TO CONSTRUCTION.

BENCHMARKS

1. CPW MONUMENT #8718, ELEV. 586.72, SE CORNER PARK RD & COLUMBIAN PKWY, N. W. CORNER PARKING LOT 50, 174° S. OF S. CORNER OF A SQUARE FROM INLET SE & 174° S. OF S. CORNER OF COLUMBIAN PARKWAY IN A SQUARE DROP.
2. TBM, ELEV. 590.54, 100' NE OF EXISTING POWER POLE & APPROX. 100' NE OF EXISTING TOILET ENERGY PROPERTY.
3. TBM, ELEV. 592.19, 100' W. OF ROBERTS RD. ALONG TRINITY TRAIL & N. END OF PAVED ALLEY.
4. TBM, ELEV. 591.66, 5' END OF PAVED TRINITY TRAIL & APPROX. 400' W. FROM ROBERTS RD.



REV.	DATE	BY	DATE	COMMENTS

B&E WORLD
CITY OF FORT WORTH, TEXAS
WATER DEPARTMENT
CLEAR FORK LIFT STATION
(X-28920)

Kimley-Horn

801 Cherry St., Suite 1300, Fort Worth, TX 76102 817-335-6811	DATE	SCALE	PROJECT NO.	SHEET
REV. No. F-298	APR 2021	1"=30'	#100936	C1
DRAWN: MAM	CHECKED: JRM			