

## The Last Train Stop Six Public Art Project M&C Attachment

Fort Worth artist Sedrick Huckaby's design for the artwork commemorates the history of the neighborhood as the sixth stop of the interurban rail system and provides a place for the community to gather. In the center of the space is a re-creation of a classic interurban train car. Ambiguous portraits of members of the community hand painted by the artist will be transferred using a vinyl wrap onto the exterior of the train car. The train car will be the centerpiece of the welcoming plaza, a "dazzling, shimmering wonder." During the day its golden appearance will speak to the community's hopes for the future. During the evening, lights from within the train will give it a warm, inner glow.

Originally planned for the nearby traffic triangle at Ramey and Stalcup, it has been revised to fit the new Bunche Park site; the streetcar design has shortened from 33 feet long to 22 feet long, while its height remains unchanged at 10 feet.

The structure will be built using aluminum and pressure treated wood framing sheathed with marine grade plywood. The sheathing is skinned with 13-gauge aluminum sheet and 1/4" aluminum trim, which will be painted in two shades of bronze to be selected by the artist. A removable panel on one side provides access to the interior for maintenance purposes.

Figure 1. Original Public Art Location in traffic triangle at Ramey and Stalcup, blocks from Bunche Park

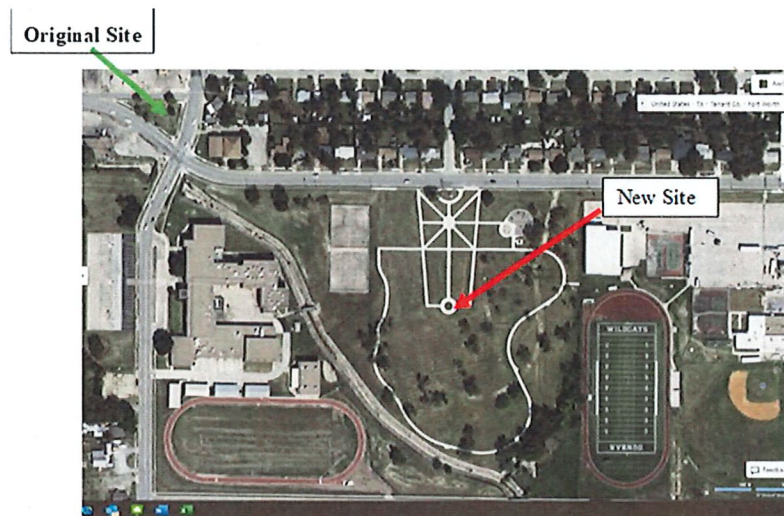
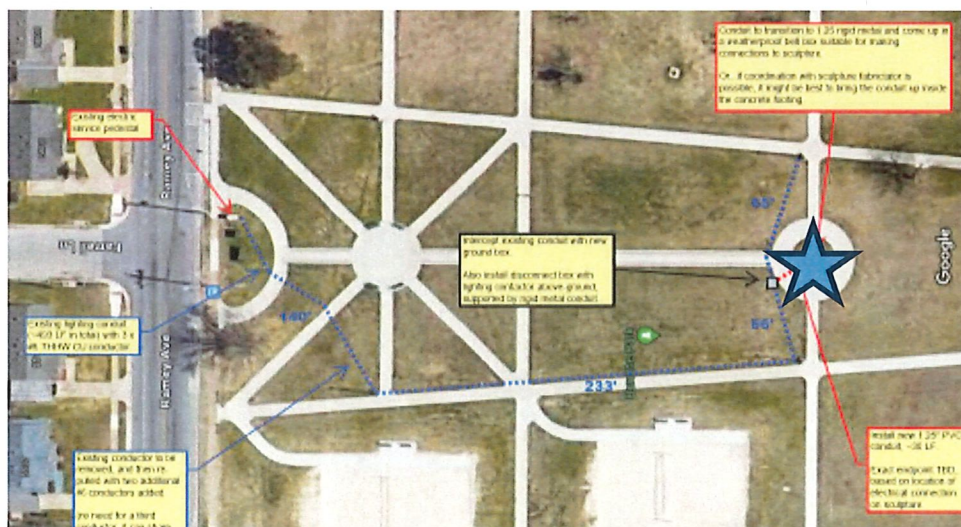


Figure 2. Public Art Location in Bunche Park



## *The Last Train Stop Six Public Art Project* M&C Attachment

Figure 3. Approved Final Design

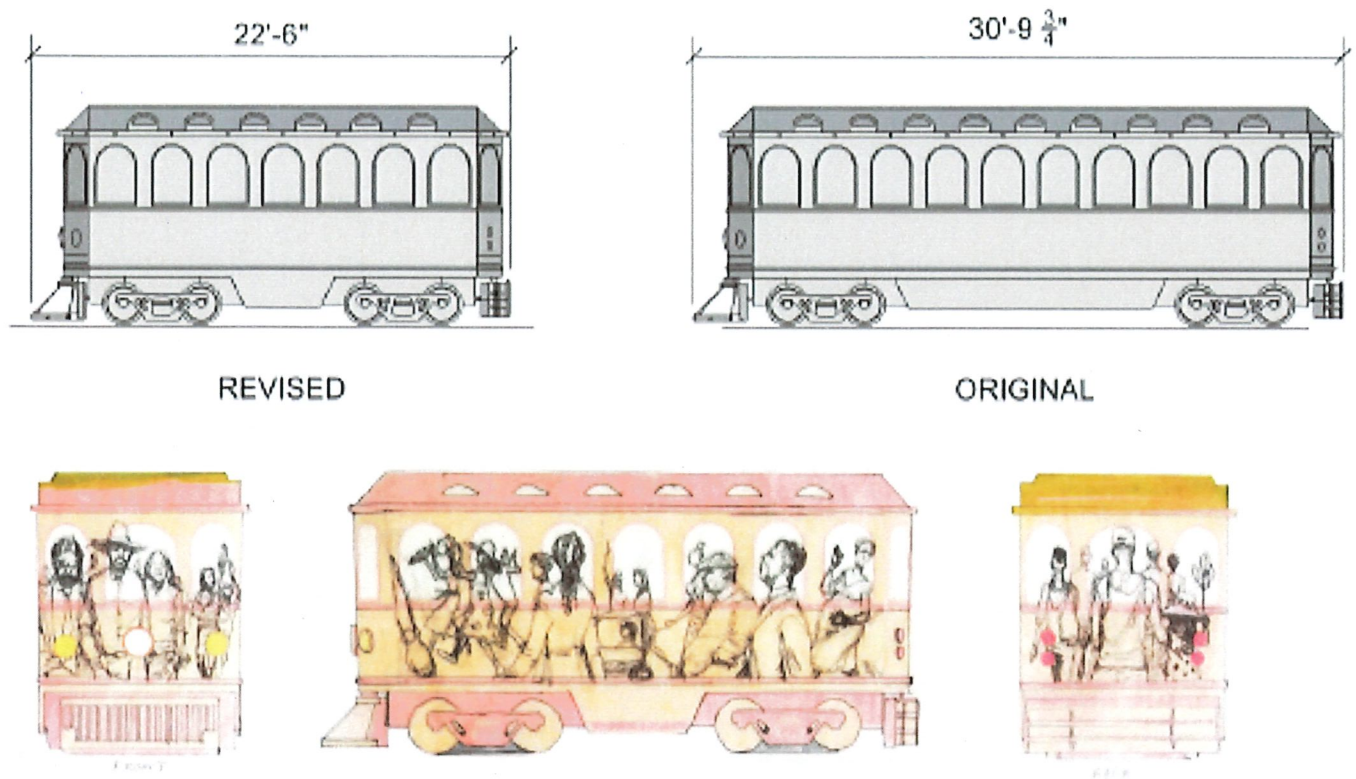


Figure 4. Approved Final Design

