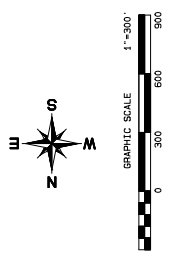
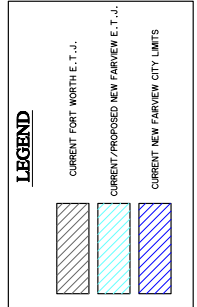
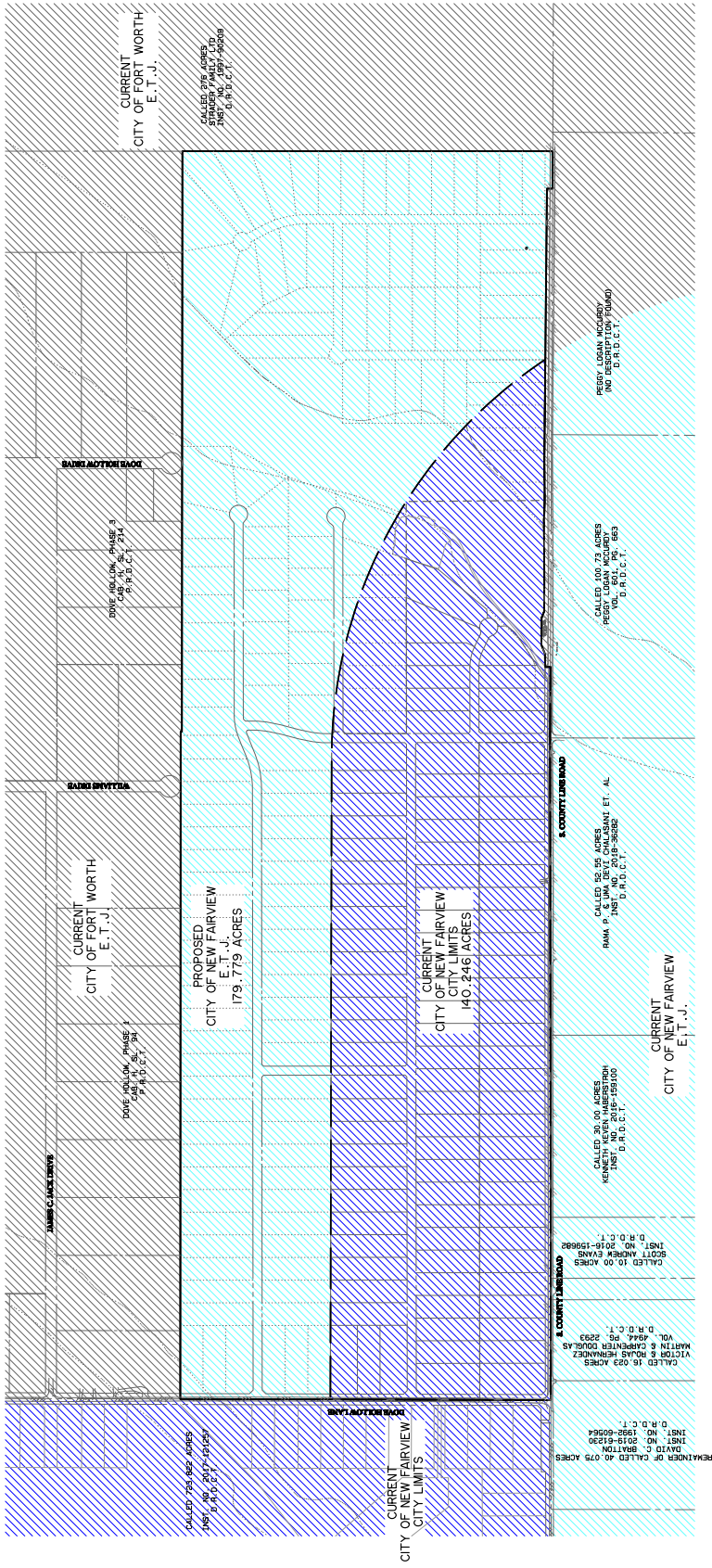


**EXHIBIT SHOWING EXISTING
NEW FAIRVIEW CITY LIMIT
AND FORT WORTH E.T.J.
OVER A PORTION OF 320.025 ACRES**

SITUATED IN THE
CITY OF FORT WORTH
CITY OF NEW FAIRVIEW
DENTON COUNTY, TEXAS
JANUARY, 2021

PREPARED BY:
GOODWIN & MARSHALL
CIVIL ENGINEERS - PLANNERS - SURVEYORS
3905 Manning Drive, Coppell, Texas 75081
Phone (817) 328-4275



**EXHIBIT SHOWING PROPOSED
NEW FAIRVIEW CITY LIMIT
AND FORT WORTH E.T.J.
OVER A PORTION OF 320.025 ACRES**

SITUATED IN THE
CITY OF FORT WORTH
CITY OF NEW FAIRVIEW
DENTON COUNTY, TEXAS
JANUARY, 2021

PREPARED BY:
**GOODWIN
MARSHALL &
ASSOCIATES**
CIVIL ENGINEERS - PLANNERS - SURVEYORS
3905 Mustang Drive, Coppell, Texas 75081
Phone (817) 328-4273