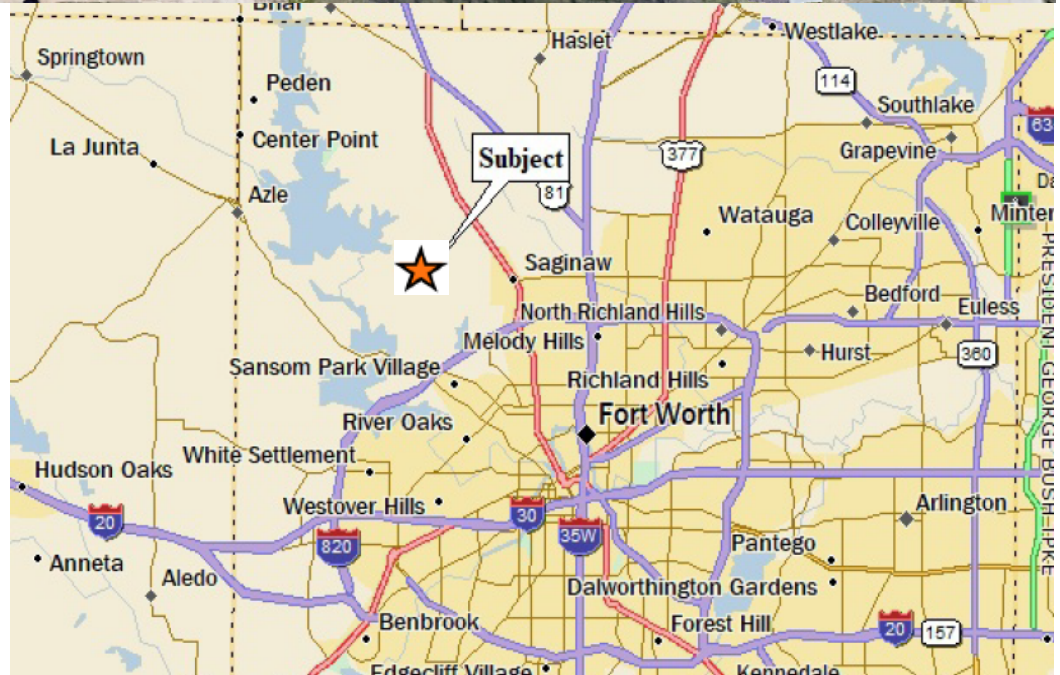


CPN 103299
5941 WJ Boaz Road P31 Condemnation Map
Council District 7



Parcel 31 ROW 1,787 SF
Parcel 31 TCE 447 SF
TOTAL 0.051 Acres
(2,234 SF)



 = Project Site

Copyright 2017 City of Fort Worth. Unauthorized reproduction is a violation of applicable laws. This product is for informational purposes and may not have been prepared for or be suitable for legal, engineering, or surveying purposes. It does not represent an on-the-ground survey and represents only the approximate relative location of property boundaries. The City of Fort Worth assumes no responsibility for the accuracy of said data.

