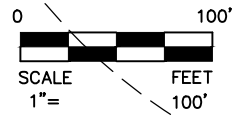
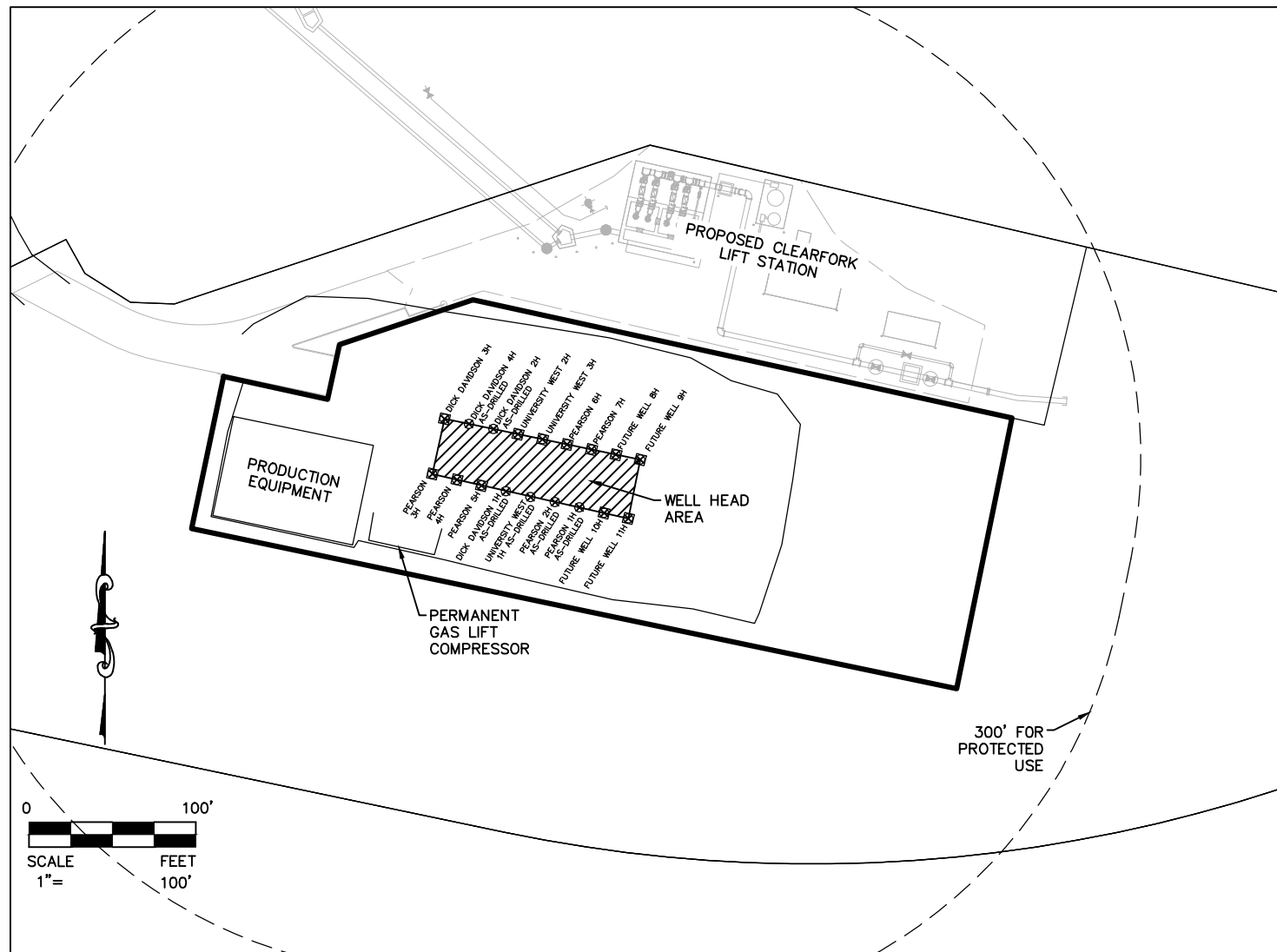
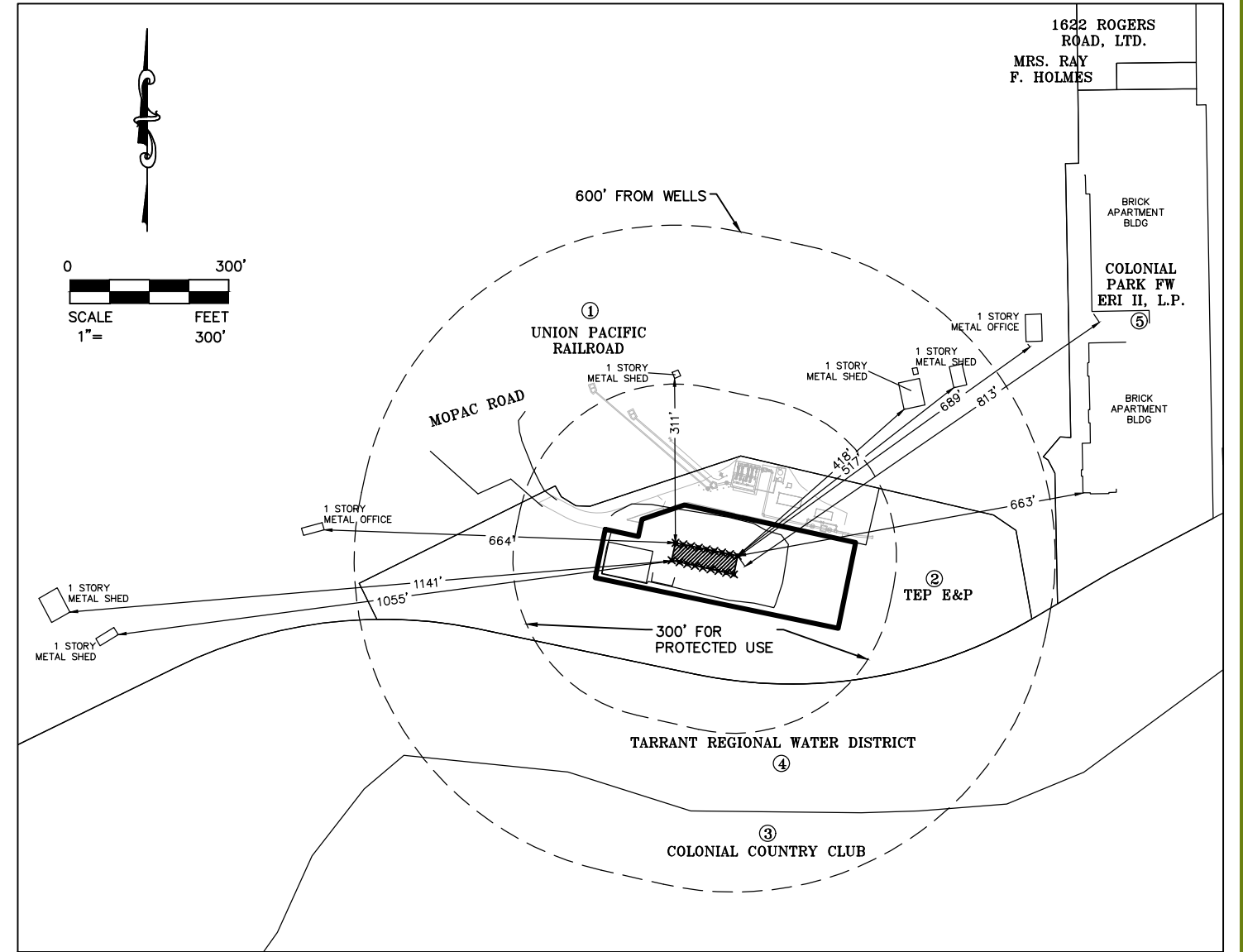


PLOTTED BY: Kevin Junge ON: Wednesday, May 19, 2021 AT: 11:04 AM FILEPATH: G:\Production\000\006200\4253\014\Pearson Pad Well Buffer Variance EXH.dwg

TRACT	OWNER	TRACT ADDRESS	MAILING ADDRESS	LEGAL DESCRIPTION	RECORDING INFORMATION
1	UNION PACIFIC RR CO	RUTLEDGE STREET	1400 DOUGLAS STREET OMAHA, NE. 68179	A 288 TR 3	VOL. 13215, PG. 130
2	TEP E&P USA, LLC	ROGERS ROAD	PO BOX 17180 FORT WORTH, TX 76102	A 288 TR 3E	D216266568
3	COLONIAL COUNTRY CLUB	COLONIAL PKWY	3735 COUNTRY CLUB CIR. FORT, TX 76109	COLONIAL COUNTRY CLUB ADDITION LOT 1R, BLOCK 1	VOL. 3409, PG. 87
4	TARRANT REGIONAL WATER DISTRICT	TRINITY RIVER	PO BOX 4508 FORT WORTH, TX. 76164	A 288 TR 6B1B	VOL. 4556, PG. 395
5	COLONIAL PARK FW ERI II, LP	1728 ROGERS ROAD	2925 COUNTRY CLUB ROAD STE 101 DENTON, TX 76210	COLONIAL PARK LOT 1, BLOCK A	DOC.# D208061154



550 Bailey Avenue • Suite 400 • Fort Worth, Texas 76107
Tel: 817.335.1121
 TEXAS REGISTERED SURVEYING FIRM NO. 10098100



Surface Location	NAD 83 Geographic		NAD 27 Geographic	
	Latitude	Longitude	Latitude	Longitude
DICK DAVIDSON 3H	32.72386	97.368093	32.723729	97.367798
DICK DAVIDSON 4H	32.723851	97.368046	32.72372	97.36775
DICK DAVIDSON 2H	32.723842	97.367998	32.723711	97.367703
UNIVERSITY WEST 2H	32.723833	97.367951	32.723702	97.367655
UNIVERSITY WEST 3H	32.723824	97.367903	32.723693	97.367608
PEARSON 6H	32.723815	97.367855	32.723684	97.36756
PEARSON 7H	32.723806	97.367808	32.723675	97.367512
FUTURE WELL 8H	32.723798	97.36776	32.723667	97.367465
PEARSON 3H	32.723769	97.368118	32.723638	97.367823
PEARSON 4H	32.723759	97.36807	32.723628	97.367775
PEARSON 5H	32.723749	97.368023	32.723618	97.367727
DICK DAVIDSON 1H	32.723739	97.367975	32.723608	97.36768
UNIVERSITY WEST 1H	32.723729	97.367927	32.723598	97.367632
PEARSON 2H	32.72372	97.36788	32.723589	97.367584
PEARSON 1H	32.723711	97.367832	32.72358	97.367537
FUTURE WELL 9H	32.723789	97.367713	32.723658	97.367417
FUTURE WELL 10H	32.723702	97.367784	32.723571	97.367489
FUTURE WELL 11H	32.723692	97.367737	32.723561	97.367442

GENERAL NOTES

1. THE BASIS OF BEARINGS AND ELEVATIONS SHOWN HEREON ARE BASED UPON THE TEXAS COORDINATE SYSTEM OF 1983 NORTH CENTRAL ZONE, BASED UPON GPS MEASUREMENTS.
2. NO PROTECTED USES FALL WITHIN 600 FEET OF PROPOSED WELL EXCEPT AS SHOWN.

WELL BUFFER VARIANCE FOR TEP BARNETT USA, LLC PEARSON PAD SITE

Sited in the W.D. Conner Survey, Abstract No. 288
City of Fort Worth, Tarrant County, Texas