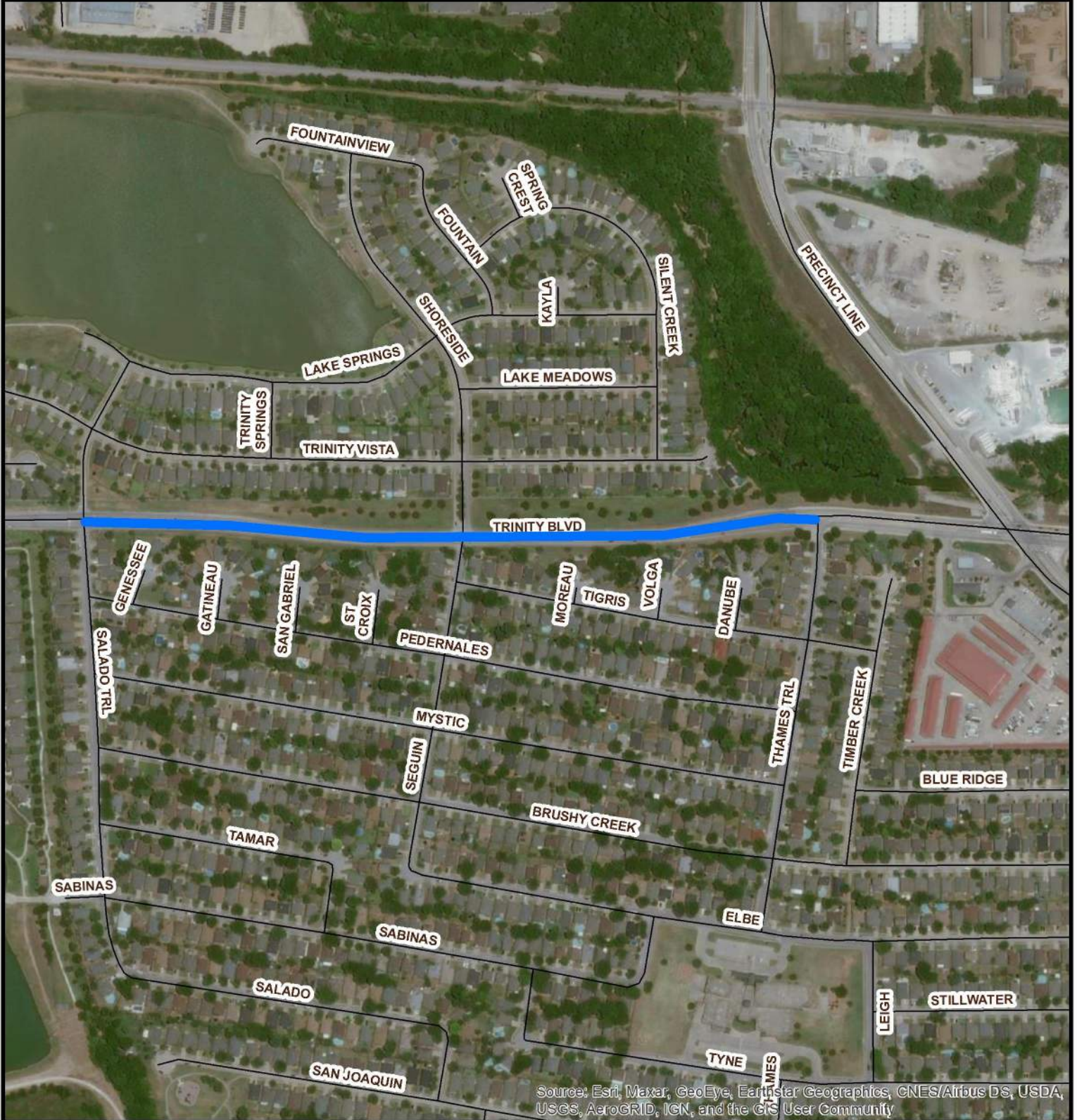
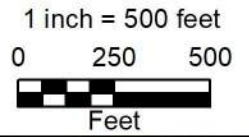


Attachment E Location Map Trinity Boulevard Phase 2 City Project Number 103280

Kimley»Horn

FIRM REGISTRATION F-928



Source: Esri, Maxar, GeoEye, Earthstar Geographics, CNES/Airbus DS, USDA, USGS, AeroGRID, IGN, and the GIS User Community

Copyright 2015 City of Fort Worth. Unauthorized reproduction is a violation of applicable laws. This product is for information purposes and may not have been prepared for or be suitable for legal, engineering, or surveying purposes. It does not represent an on-the-ground survey and represents only the approximate relative location of property boundaries. The City of Fort Worth assumes no responsibility for the accuracy of said data.