



To the Mayor and Members of the City Council

April 1, 2025

Page 1 of 3

SUBJECT: THE EAST BERRY STREET CORRIDOR PLAN UPDATE



This informal report provides the status of the East Berry Street Corridor Plan (The Plan).

The East Berry Corridor study area boundaries are from IH-35W to Lake Arlington (see map below). This corridor project aims to reconstruct East Berry Street using complete streets design standards, with the goals of enhancing safety and comfort for all users, supporting transit, and providing necessary elements for swift capital delivery and economic development.

The Plan informs the design schematic of the 2022 Bond East Berry Street Corridor Improvements Project (City Project No. 104222). The main outputs of the East Berry Corridor Plan are recommendations for the schematic of the East Berry Street Improvements from IH-35 to Miller Avenue. The Plan and the schematic will increase the City’s competitiveness when grants and other funding opportunities arise. East Berry Street from Cobb Park Drive to US-287 is under consideration for the 2026 Bond Program.

A comprehensive engagement strategy was completed by the City’s consultant, Kimley-Horn and Associates, Inc., to gather feedback from the community and stakeholders on street design, transportation priorities, zoning, and economic development. The study period began in January 2023 and ran until August 2024. The consultant conducted four rounds of open houses, a series of focus groups, and surveys, as well as maintained a website to keep the public informed and receive input. The Plan contains the existing conditions report, a needs analysis, a project list, an implementation plan, and the framework for creating a form-based code with associated zoning recommendations.

The recommendations include the installation of fiber, cooling pavement, and selection of nine strategic sites to bolster economic development. The full draft of The Plan is available to review at <https://engagekh.com/east-berry-street/east-berry-street-home>. The Plan won the Texas American Planning Association Gold award for transportation plans at the 2024 Texas Chapter of the American Planning Association Conference.

The Final East Berry Street Corridor Plan is scheduled to be presented to the City Council for adoption in April or May of this year. If approved, the next step will be the adoption of the recommended form-based code, potential zoning changes on parcels to match the newly adopted form-based code, and Master Thoroughfare Plan amendments. This series of adoptions lays the foundation by which the City can turn The Plan into projects that achieve the listed goals and outcomes. The proposed schedule is as follows:

- | | |
|--|--------------------|
| • Plan Adoption | Spring 2025 |
| • Master Thoroughfare Plan Amendment | Spring/Summer 2025 |
| • Form-Based Code Adoption | Summer/Fall 2025 |
| • Zoning Properties to match Form-Based Code | Fall 2025 |
| • East Berry Schematic from IH35 to Miller Ave | Fall 2025 |



To the Mayor and Members of the City Council

April 1, 2025

Page 2 of 3

SUBJECT: THE EAST BERRY STREET CORRIDOR PLAN UPDATE

Please contact Kelly Porter, Assistant Director of Regional Transportation and Innovation, Transportation and Public Works, by e-mail to transportation@fortworthtexas.gov or LaShondra Stringfellow, Assistant Director of Development Services, by e-mail to lashondra.stringfellow@fortworthtexas.gov for questions.

**Jesus "Jay" Chapa
City Manager**



To the Mayor and Members of the City Council

April 1, 2025

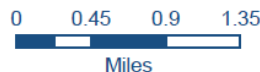
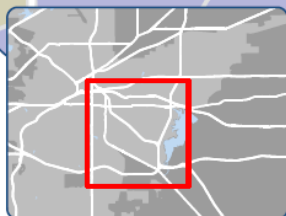
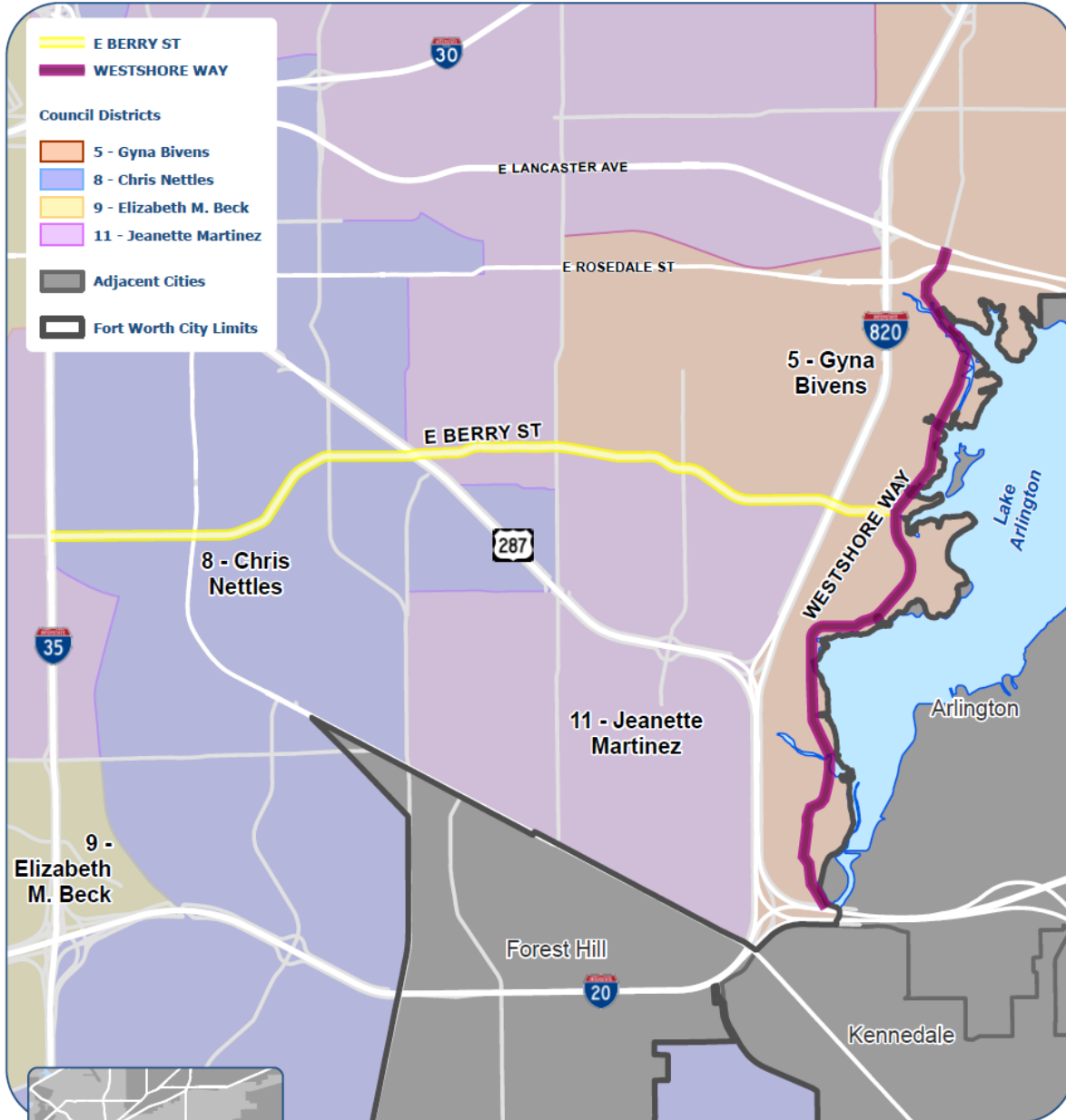
Page 3 of 3

SUBJECT: THE EAST BERRY STREET CORRIDOR PLAN UPDATE

Mayor & Council Map | E. Berry St
Corridor Plan Adoption



CD #5, 8, 11



Data Source: CFW GIS, Near Map | Map generated March 2025
TPW Business Support Services

Copyright © 2025 City of Fort Worth. Unauthorized reproduction is a violation of applicable laws. This data is to be used for graphical representation only. The accuracy is not to be taken/used as data produced for engineering purposes or by a registered professional land surveyor. The City of Fort Worth assumes no responsibility for the accuracy of said data.