



**City of Fort Worth**  
**Park, Recreation and Open Space Master Plan**  
**2020 Update**

**DRAFT**

**June 11, 2020**



**Park & Recreation Department**  
**4200 South Freeway, Suite 2200**  
**Fort Worth, Texas 76115**  
**Phone: (817) 392-5700**  
**[FortWorthTexas.gov/Parks](http://FortWorthTexas.gov/Parks)**



**May 2020**

On behalf of the Park & Recreation Advisory Board and the City of Fort Worth Park & Recreation Department, we are pleased to present this 2020 Update to the Park, Recreation and Open Space Master Plan. Adopted by the Fort Worth City Council on June 23, 2020 (Resolution No. \_\_\_\_\_), the 2020 Updated Master Plan continues the legacy of previous park planning efforts which began with the first Park Master Plan authored by George Kessler in 1909.

Consistent with the 1930 and 1957 Hare and Hare Master Plans, the Park & Recreation Department's 1992 Strategic Plan and the 1998, 2004, 2010 Update and 2015 Park, Recreation and Open Space Master Plans, the 2020 Master Plan Update reflects accomplishments that have been achieved since the adoption of the 2015 Master Plan, updates demographics and prioritizes park system needs.

The 2020 Master Plan Update enables the Park & Recreation Department to assess priorities and formulate resource allocation recommendations in a strategically holistic, proactive and prudent manner to ensure the sustainability of the city's present and future park system.

We look forward to working together with the citizens of Fort Worth in building upon the legacy of our park system into the next decade and beyond.

Sincerely,

Richard Zavala, Director  
Park & Recreation Department

Daniel Villegas, Chair  
Park & Recreation Advisory Board



## A Resolution

NO. \_\_\_\_\_

### **ADOPTING AN UPDATE TO THE 2015 PARK, RECREATION AND OPEN SPACE MASTER PLAN FOR THE CITY OF FORT WORTH, TEXAS**

**WHEREAS**, in 1909 the first Park Master Plan, authored by George Kessler, was adopted by the City of Fort Worth Park Board, and successive Park Master Plans by Hare and Hare were adopted in 1930 and 1957 respectively; and

**WHEREAS**, these plans laid the foundation for the park system in Fort Worth and, on November 10, 1992, the City Council adopted a Strategic Plan for the Fort Worth Park and Recreation Department to guide the management of its resources; and

**WHEREAS**, on June 30, 1998, the City Council adopted the 1998 Park, Recreation and Open Space Master Plan, which included the first locally determined needs-based standards in the history of the Parks and Community Services Department; and

**WHEREAS**, the standards incorporated in the 1998 Park, Recreation and Open Space Master Plan were the first locally determined needs-based standards in the history of the Parks and Community Services Department; and

**WHEREAS**, the standards incorporated in the 1998 Park, Recreation and Open Space Master Plan were the first locally determined needs-based standards in the history of the Parks and Community Services Department; and

**WHEREAS**, for a number of years, the Department has conducted periodic Needs Assessment Studies for use in setting local standards; prioritizing park, recreation and open space needs both City-wide and by Park Planning District; and developing an action plan to comply with the Texas Parks and Wildlife Department's grant guidelines; and

**WHEREAS**, the City Council adopted the 2004 Park, Recreation and Open Space Master Plan on June 22, 2004 along with an update to the plan on February 9, 2010, incorporating them both by reference into the City's Comprehensive Plan; and

**WHEREAS**, on January 27, 2015 the City Council adopted the current Master Plan and incorporated it by reference into the City's Comprehensive Plan. Revisions to update the 2015 Master Plan have been prepared to address accomplishments achieved, update demographics, and ratify priorities; and

**WHEREAS**, in preparation for the 2020 update to the Park, Recreation and Open Space Master Plan, the Park & Recreation Department commissioned a Needs Assessment Study for use in setting local standards; prioritizing park, recreation and open space needs both city-wide and within each of the City's five Park Planning Districts; and developing an action plan to comply with the Texas Parks and Wildlife Department's grant guidelines; and

**WHEREAS**, revisions to update the Park, Recreation and Open Space Master Plan have been prepared to address changes that have occurred in the City over the last five years and to maintain the City's eligibility for state park grants; and

**WHEREAS**, the City Plan Commission endorsed the update to the Park, Recreation and Open Space Master Plan on May 27, 2020; and

**NOW, THEREFORE, BE IT RESOLVED BY THE CITY COUNCIL OF THE CITY OF FORT WORTH, TEXAS:**

1. The update to the Park, Recreation and Open Space Master Plan for the City of Fort Worth is hereby officially adopted to reflect accomplishments that have been achieved during that period, and to update demographics and prioritize park system needs; and
2. The updated Park, Recreation and Open Space Master Plan for the City of Fort Worth is hereby officially adopted as the guide for allocation of resources for the improvement and continued development of Fort Worth's Park, Recreation and Open Space System; and
3. The updated Park, Recreation and Open Space Master Plan for the City of Fort Worth is hereby incorporated as part of the City's Comprehensive Plan; and
4. The adoption of this updated Master Plan supersedes previous park, recreation and open space master plans to the extent the provisions of the update are in direct conflict with such other park, recreation and open space master plan.

Adopted this 23rd day of June 2020.

ATTEST:

By: \_\_\_\_\_  
Mary Kayser, City Secretary

## City Officials

**Betsy Price - Mayor**

**David Cooke - City Manager**

### **City Council**

### **Park & Recreation Advisory Board**

Carlos Flores - District 2  
Brian Byrd - District 3  
Cary Moon - District 4  
Gyna Bivens - District 5  
Jungus Jordan - District 6  
Dennis Shingleton - District 7  
Kelly Allen Gray - District 8  
Ann Zadeh - District 9

Matthew Dufrene - Position 1  
Morgan Leal - Position 2  
Stephanie Culver - Position 3  
Ann Stetson - Position 4  
Walter Dansby - Position 5  
Jessica Rangel - Position 6  
Jeffrey Davis - Position 7  
LaShanda Davis - Position 8  
Daniel Villegas - Position 9

### **City Plan Commission**

### **Park & Recreation Department Staff**

Vicky Schoch - Position 1  
Timothy Bishop - Position 2  
Jim Tidwell - Position 3  
Mark Brast - Position 4  
Benjamin Robertson - Position 5  
Armard Anderson - Position 6  
Edward Deegan - Position 7  
Donald Boren - Position 8  
Melissa Konur - Position 9  
Matthijs Melchior - Position 10  
Robert Kelly - Position 11  
Stephanie Spann - Position 12  
Joshua Lindsay - Position 13

Richard Zavala - Director  
David Creek - Assistant Director, Pln. & Res. Mgmt.  
Dave Lewis - Assistant Director, Athletics & Golf  
Kelli Pickard - Assistant Director, Recreation  
Sandra Youngblood - Assistant Director, Operations  
Joel McElhany - Capital Program Manager  
Scott Penn - District Superintendent  
Lori Gordon - Planning Manager  
Patrick Benton - Senior Planner  
Germaine Joseph - Senior Planner  
Christina Moon - Park Planner





## Table of Contents

<b>Executive Summary.....</b>	<b>11</b>
<b>Population Trends.....</b>	<b>12</b>
<b>City-wide Inventory of Areas and Facilities.....</b>	<b>15</b>
<b>City-wide Plan Prioritization of Needs.....</b>	<b>16</b>
<b>Plan Recommendation and Prioritization.....</b>	<b>17</b>
<b>City-wide Plan Implementation and Scheduling.....</b>	<b>18</b>
 <b>Inventory, Plan Prioritization, and Implementation of Needs</b>	
Park Planning District 1.....	20
Park Planning District 2.....	23
Park Planning District 3.....	26
Park Planning District 4.....	29
Park Planning District 5.....	34
 <b>Appendix</b>	
Park Location Map	
Park Inventory	
City of Fort Worth Needs Assessment Study	
Completed Capital Improvement Projects	



## Executive Summary

Parks, open space and recreational opportunities are important, not only to enhance quality of life and neighborhood vitality, but also to preserve natural resources and provide alternative transportation links between our neighborhoods and growth centers. The City of Fort Worth Park & Recreation Department has prepared this update to the 2015 Park, Recreation and Open Space Master Plan to provide guidance to the City in its management and development of parkland and recreational facilities.

The Goals and Objectives of the Master Plan (listed below) are based on public input and are ratified by the Park & Recreation Advisory Board. The identified priorities serve as a guide for decisions made in producing and updating the Master Plan.

1. Restore and maintain the viability of the park, recreation and open space system by investing and reinvesting in existing facilities.
2. Provide new parkland and facilities to meet park, recreation and open space needs in developing and redeveloping areas of the City.
3. Improve the variety of park, recreation and open space opportunities available to the community.
4. Expand recreational opportunities in the floodplains of the Trinity River and its tributaries.
5. Build and enhance community partnerships to deliver quality services and facilities.
6. Preserve and enhance the City's natural, historical and developed resources.

As the 2015 Master Plan remains relevant and serves as a companion document to this effort, this update identifies the most recent inventory data, demographics, staff and public input, including a 2019 Needs Assessment Study. The result is the ratification of priorities based on the Park & Recreation Department's accomplishments since the 2015 Plan was adopted. Priorities are ranked with both indoor and outdoor priorities presented jointly to assure that community based needs are addressed and funding options are optimized. This update will serve as a guide in park development and funding over the next five years.

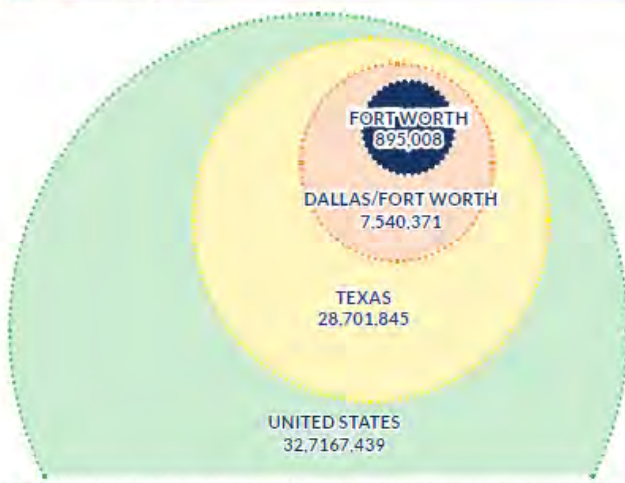
## Population Trends

U.S. Census Bureau 2019 population estimates show Fort Worth jumping from the 15th to 13th largest city in the United States with a population of 895,008. Fort Worth gained 19,552 residents in 2018, climbing ahead of Columbus, Ohio and San Francisco.

Fort Worth’s ranking has remained consistent at 16th since 2010, with one anomalous estimate year in 2013 when Fort Worth was ranked 17th. Since April 1, 2010, Fort Worth’s growth rate has slowed compared with the rapid growth of the 2000s and is more in line with growth experienced in the 1990s. Between July 1, 2014 and July 1, 2018 Fort Worth added approximately 86,366 people, representing an annual average growth rate of 2.04 percent.

### QUICK FACTS

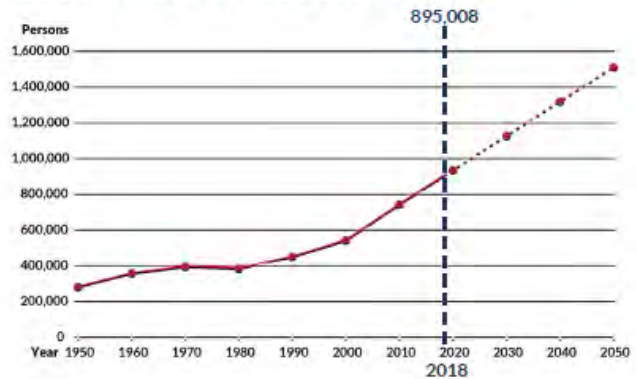
#### CURRENT POPULATION



Source: U.S. Census Bureau Annual Estimates of Resident Population

#### FORT WORTH POPULATION, 1950-2045

Fort Worth has a larger population than Columbus, San Francisco, Charlotte, Indianapolis, Denver, Washington D.C., and Boston.



Source: NCTCOG and U.S. Census Bureau Annual Estimates of Resident Population

**355.6**

LAND AREA IN SQUARE MILES

**13<sup>th</sup>**

NATIONAL POPULATION RANK

**153,802**

POPULATION CHANGE 2010-2018

**2,517**

POPULATION DENSITY PER SQUARE MILE

**29.6%**

BACHELOR'S DEGREE OR HIGHER

**33.2**

MEDIAN AGE

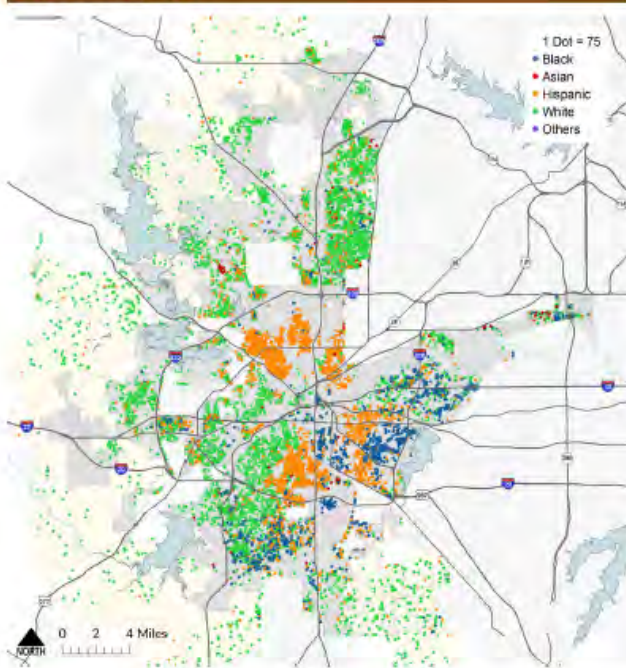
Source: U.S. Census Bureau, 2018 American Community Survey 1-Year Estimates, City of Fort Worth, Planning & Data Analytics, 2020.

Accommodating population growth in a more sustainable way is an important challenge facing communities across the country, and Fort Worth will be required to meet the many demands of a growing population in an efficient and effective manner. Before our community makes important decisions, we seek to involve all citizens who might be affected by those decisions. We strive to communicate effectively with all our citizens, and to include them early and meaningfully in our decision-making process through public hearings, neighborhood meetings, citizen surveys, workshops and informal discussions. We use inclusiveness and cooperation to make Fort Worth a livable city for all. The total population will continue to grow each year and increasing population will place additional demands on existing community facilities, resulting in the need for additional and expanded facilities. Shifting populations will result in changing use patterns and will help determine the optimal location for new facilities.

## RACE / ETHNICITY

## COMPREHENSIVE PLAN | POPULATION TRENDS

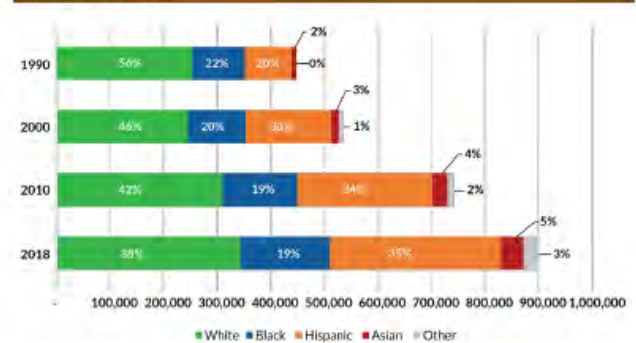
### RACE DISTRIBUTION



Source: U.S. Census Bureau, 2010 Census

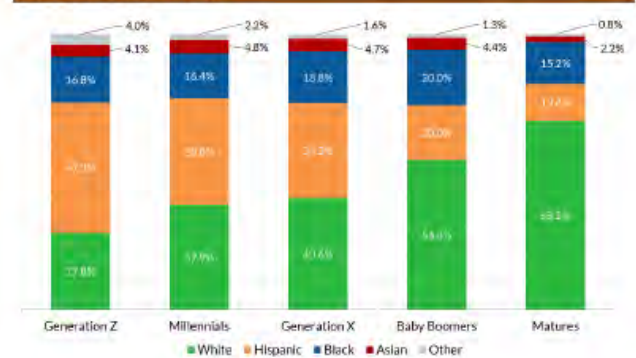
While Fort Worth's total population grows, there will also be changes in the composition of the population. Collectively, minorities have become the majority. The percentage of the population over the age of 65 will continue increasing through 2040. Changes in age composition will result in a need for different types of housing and services.

### RACE / ETHNICITY



Source: U.S. Census Bureau, 2018 American Community Survey 1-Year Estimates

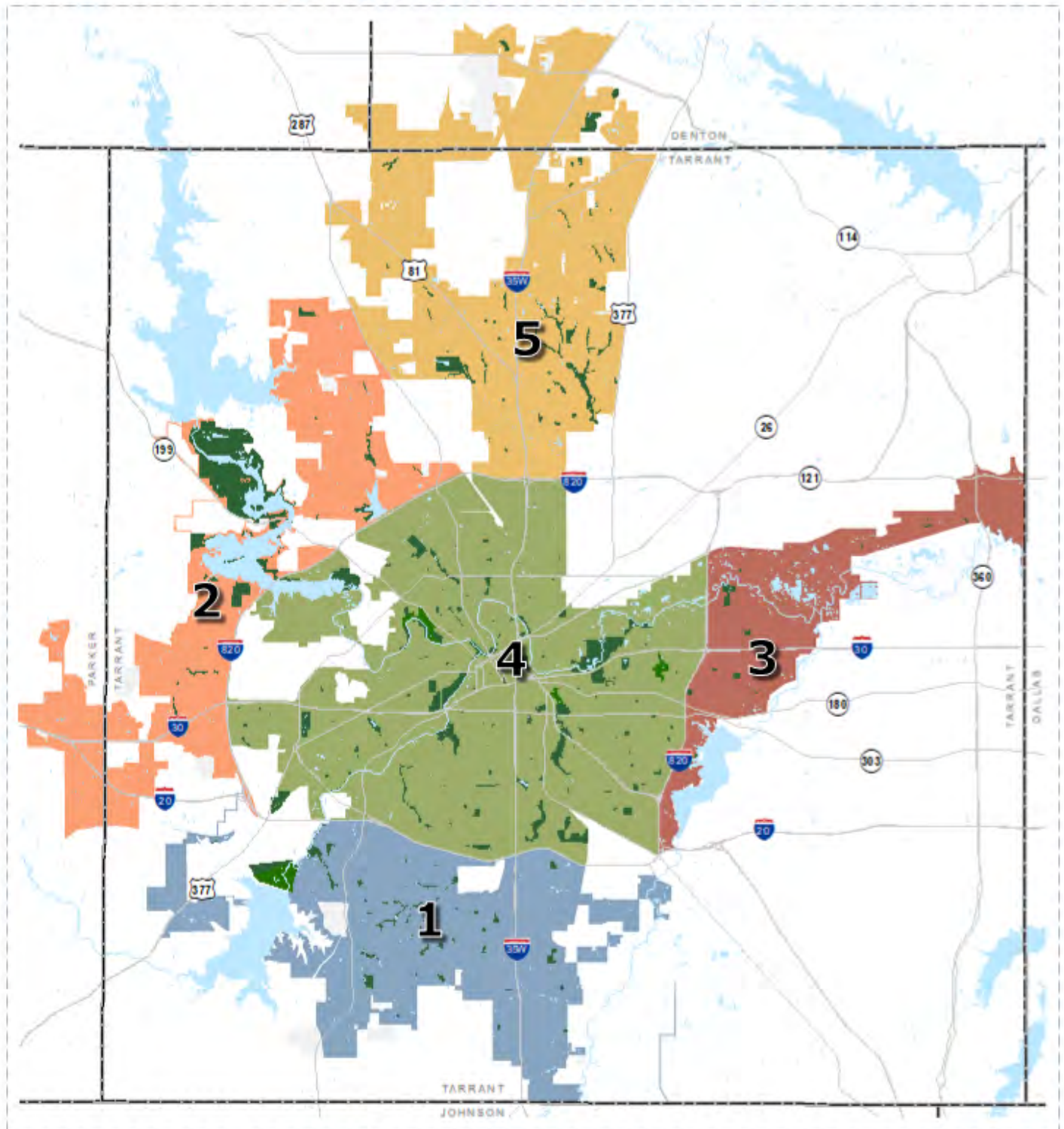
### RACE BY GENERATION



Source: U.S. Census Bureau, 2017 American Community Survey 1-Year Estimates



## 2020 - City of Fort Worth Park Planning Districts



## City-wide Inventory of Areas and Facilities

The City of Fort Worth park system consists of 291 park, recreation and open space sites and numerous agreements with other agencies. The park system contains 266 active park sites with the remainder either on reserve for future use or leased to other government or non-profit agencies. Each park and facility in the current park system is classified under one of the following categories: Neighborhood-Based, Community-Based, or Special Use & Nature Based parks.

A complete inventory of these facilities is included by Park Planning District and broken out by category. Utilizing available information and with consideration of Park & Recreation Department accomplishments, Fort Worth's diverse population is served by a variety of park, recreational and open spaces encompassed by the following:

- 12,337 acres of parkland
- 14 city-operated Community Centers
- Fort Worth Botanic Garden
- Fort Worth Nature Center & Refuge
- Fort Worth Zoo
- Log Cabin Village
- 3 Golf Courses (108 holes)
- 210 miles of hike and bike trail (traversing both City and Tarrant Regional Water District properties)
- 11 Athletic Field Complexes (65 fields)
- 198 Neighborhood-Based Parks
- 67 Community-Based Parks
- 8 Conservancy Parks
- 7 Greenbelts
- 11 Special Use Parks



## City-wide Plan Prioritization of Needs

One of the significant instruments used in the development of this Master Plan update is the 2019 Needs Assessment Study. The City employed National Service Research of Fort Worth, a full service research firm, to carry out the 2019 Needs Assessment process. The research process included a mailed survey instrument to 20,000 households randomly chosen within each of the five Park Planning Districts in direct proportion to the population within each district; posted on the City's main web page and Facebook page and sent to Home Owners Association groups and through the City's database of e-notifications throughout the survey period. A total of 2,000 paper surveys, with business reply self mailers were distributed to all community centers and libraries in Fort Worth.



Major findings of the 2019 Needs Assessment Study included the following:

- 67% of respondents rated the existing park system as good or excellent.
- City-wide, the most frequently used facilities were 1) parks, 2) trails, 3) playgrounds, 4) community/athletic facilities, and 5) fields for organized sports.
- More than 40% of respondents are willing to pay more for the renovation of existing parks, increased maintenance of parks and trails and land acquisition for more parks, trails and trail connections.
- An overwhelming 78% of respondents think quality parks, facilities and programs are very important to the overall pursuit of a healthy and active lifestyle; while 80% think parks are important to the overall quality of life in Fort Worth.



### Plan Recommendation and Prioritization

Deficiencies and opportunities are identified from inventory information, application of service standards, and classification measurements in conjunction with population and demographic data gathered from each Park Planning District. From each of the identified deficiencies and opportunities, recommendations are made to improve areas of deficiencies and act on opportunities presented. The criteria established for evaluation of the priorities are based on: the available resources identified in the inventory; the needs and desires of the citizens identified in the Needs Assessment Survey (shown below); and the degree to which each recommendation meets the vision, mission and goals of the department.

In the 2019 Needs Assessment, city-wide, our citizens stated the most needed facilities in the City of Fort Worth are: trails, open spaces/natural areas, aquatic center, playgrounds, benches/seating areas.

In the 2013 Needs Assessment, city-wide, our citizens stated the most needed facilities in the City of Fort Worth were: trails, open spaces/natural areas, playgrounds, aquatic centers and benches/seating areas.

**Most Needed Facilities in Fort Worth – Priority Ranked – Top Ten**  
**Q. Which three facilities are the MOST important to you for the Park & Recreation Department to focus on within the next five years? N=1,203**

Facility	PRIORITY RANK
Hike, bike, walking trails	1
Open spaces/natural areas	2
Aquatic Center (play features, swim lanes, etc.)	3
Playgrounds	4
Benches/seating areas	5
Dog parks	6
Age friendly playgrounds	7
Picnic shelters/picnic tables	8
Athletic fields (lighted)	9
Off road bike trails	10





## City-wide Plan Implementation and Scheduling

The development of the five-year Capital Improvement Program (CIP) is based on established priorities using available debt and cash funding for each year within the five-year program. Factors used in developing the Park & Recreation Department's CIP priorities include: health and safety, legal mandates, infrastructure stewardship, policy mandates, direct revenues and leverage potential, high use, and unmet service needs.

The Park & Recreation Department's CIP represents the department's roadmap for future project expenditures for city-wide park system improvements and Golf capital improvements. Specifically, the CIP includes indoor and outdoor improvements such as erosion repair, road and parking lot repaving projects, playground replacement projects, development of new athletic field facilities, new community centers and expansion / renovation of existing centers, construction and sustainment of walks and trails, installation of security lighting, aquatic facilities, irrigation improvements and development of reserve parks. A break-out of the projects noted are as follows:

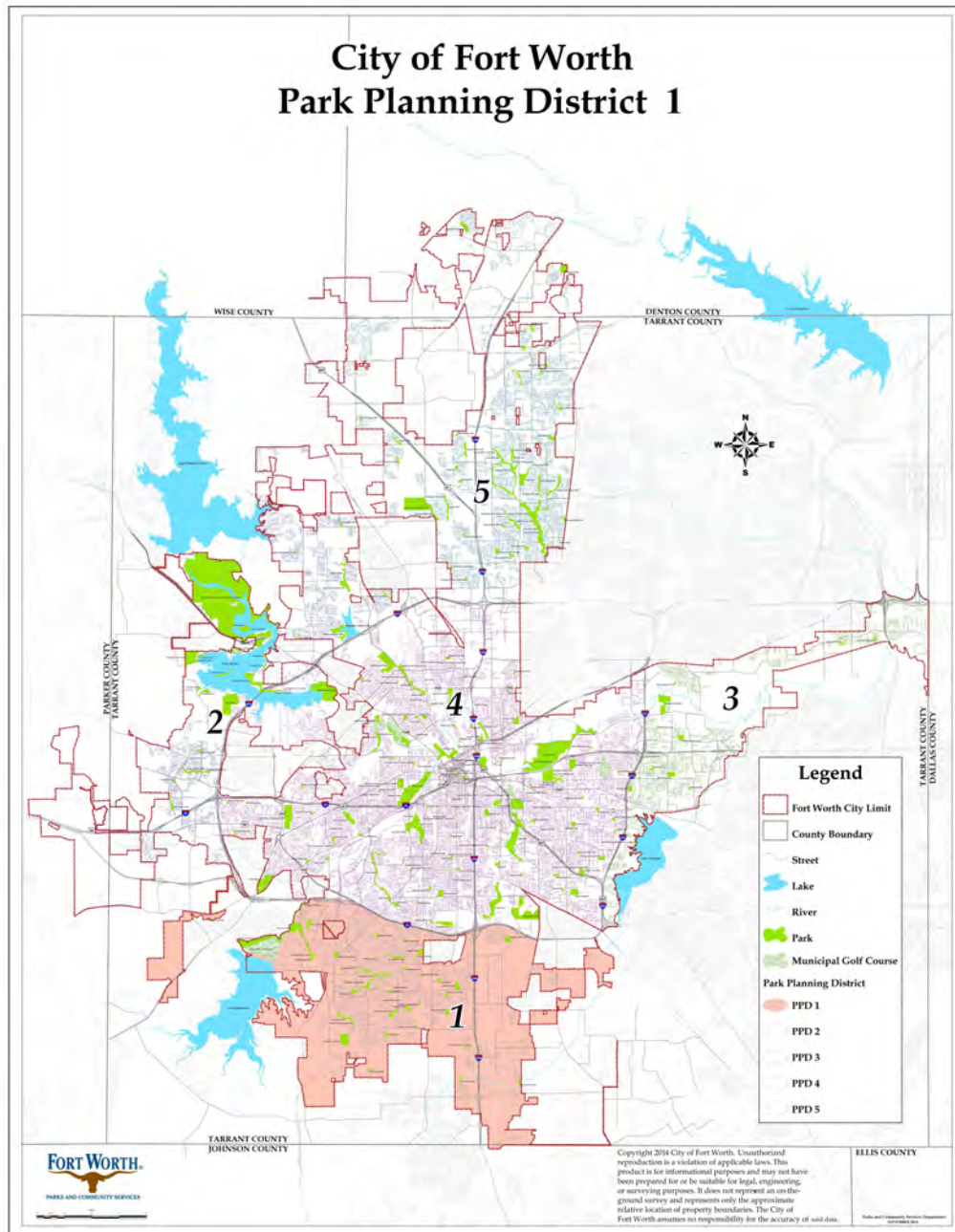
- Park Erosion Repair and Control - 11 projects
- Park Roads and Parking Lots - 12 projects
- Athletic Field Improvements - 7 projects
- Athletic Field Lighting - 3 projects
- Service Center Improvements - 4 projects
- New Community Centers and Expansion/Renovation of Existing Centers - 6 projects
- Reserve Park Development - 13 projects
- Playgrounds - 53 projects
- Park Renovations of Existing Facilities - 54 projects
- Walks and Trails - 13 projects
- Aquatic Facilities - 2 projects
- Park Security Lighting - 45 projects
- Parkland Acquisition - 3 projects

Since 2015, the Park & Recreation Department has completed over \$73M in capital improvement projects city-wide. These projects include new park development and facility reinvestment (replacement of infrastructure due to age and/or condition) in neighborhood parks, community parks and community centers. A summary of these projects is included in the table below.

Fiscal Year	Amount 	Description	
2019	\$13,884,627	Road and parking improvements, drainage and erosion control, trail, reserve park development, community center expansion, and playgrounds at 21 parks	
2018	\$23,063,974	Playgrounds, walks and trail projects, community center, picnic shelters, park roads and parking lots at 32 parks	
2017	\$9,138,415	Reserve park development, playgrounds, picnic shelters, drainage, and road and parking improvements at 26 parks	
2016	\$22,175,138	Athletic field lighting, community park development, tennis court resurfacing, playground replacement, park roads, walks and trail projects, and restroom facilities at 34 parks	
2015	\$4,941,138	Athletic field lighting, playgrounds, walks and trail projects at 10 parks	
<b>Total</b>	<b>\$73,203,292</b>	<b>123 projects completed throughout the park system</b>	

Over the next five years, the Park & Recreation Department’s work plan calls for the completion of approximately \$122M in capital improvement projects. It is anticipated that these forty (40) projects, or more, will consist of reserve park development, community centers, traditional park amenities (i.e. playgrounds, picnic facilities, benches, practice fields, hardcourts, etc.), trail extensions, and athletic field development to name a few.

## Park Planning District 1 - Inventory and Facilities



PPD 1 is bounded on the north by IH-20, on the south and east by the City of Fort Worth city limits and on the west by Farm to Market Road 287; however, there are areas that extend further westward. The majority of the existing neighborhoods have been built since the seventies. Neighborhood and Community Based Parks are evenly distributed throughout the district and offer the opportunity to build connections between parks.



## Park Planning District 1 - Inventory and Facilities

PARK	TIER	YEAR	ACRES	PARK	TIER	YEAR	ACRES
C. P. Hadley	Neighborhood Based	2006	28.22	Candleridge	Community Based	1976	88.03
Camelot	Neighborhood Based	1986	5.25	Chisholm Trail	Community Based	1998	84.21
Creekside	Neighborhood Based	1988	16.23	Hallmark	Community Based	1963	25.35
Dabney	Neighborhood Based	1985	3.45	Highland Hills	Community Based	1968	28.66
Deer Creek	Neighborhood Based	1987	11.99	Oak Grove	Community Based	2015	67.39
Deer Meadow	Neighborhood Based	2012	8.50	Oakmont	Community Based	1981	127.17
Fox Run	Neighborhood Based	1998	9.79	Pecan Valley	Community Based	1962	190.14
Hulen Meadows	Neighborhood Based	1986	23.04	Southwest	Community Based	1969	1.80
Kingswood	Neighborhood Based	2000	16.77	Westhaven	Community Based	2020	<u>4.67</u>
Krauss Baker	Neighborhood Based	1977	18.60				617.43
Lincolnshire	Neighborhood Based	1985	15.38				
Little People	Neighborhood Based	1978	2.90				
McPherson	Neighborhood Based	2016	12.44				
Meadow Creek	Neighborhood Based	2008	4.52				
Meadows West	Neighborhood Based	1984	17.24				
Parks of Deer Creek	Neighborhood Based	2008	8.22				
Parkwood East	Neighborhood Based	1985	0.18				
Patricia LeBlanc	Neighborhood Based	1986	15.00				
Quail Ridge	Neighborhood Based	1986	7.33				530.00
Rosemary Ridge	Neighborhood Based	2010	6.25				
Rosenthal	Neighborhood Based	1979	1.53				
South Meadows	Neighborhood Based	1998	3.59				
Southcreek	Neighborhood Based	1983	6.30				
Summer Creek Ranch	Neighborhood Based	2000	6.23				
Sundance Springs	Neighborhood Based	2008	5.39				
Trail Lake Estates	Neighborhood Based	2001	4.58				
Walnut Creek	Neighborhood Based	2009	5.59				
Wedgwood	Neighborhood Based	1955	6.66				
Westcreek	Neighborhood Based	1971	17.00				
Whitfill	Neighborhood Based	2017	22.65				
Willowcreek	Neighborhood Based	1984	8.68				
Woodmont	Neighborhood Based	1982	<u>15.00</u>				
			334.49				

PARK	TIER	YEAR	ACRES
City View	Special Use & Nature Based	1985	31.31
Oakmont Linear	Special Use & Nature Based	1979	34.88
Pecan Valley Golf Course	Special Use & Nature Based	1962	461.77
Southridge	Special Use & Nature Based	1988	<u>2.05</u>

## Plan Prioritization & Implementation of Needs

### PPD 1: Prioritization of Needs

- Traditional Park Amenities
- Hike/Bike/Walking Trails
- Facility Reinvestment
- Open Space/Natural Areas
- Practice/Multi-use Areas

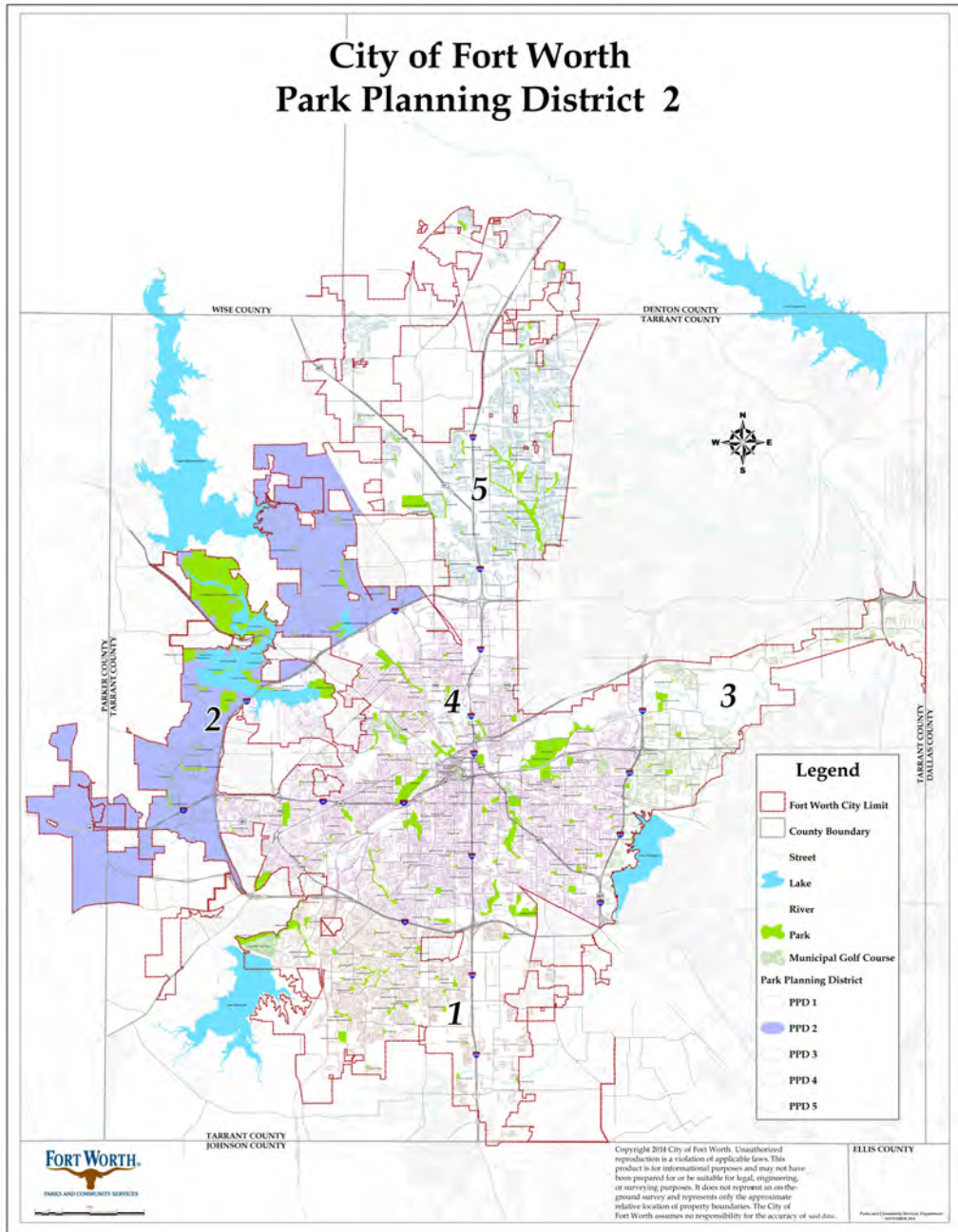
### PPD 1: Plan Implementation of Needs

The following projects located in Park Planning District 1 are funded through Bond Programs and other funding sources and include a mix of recreational needs that have been identified and addressed in the five-year work plan and are actively being executed.

The Chisholm Trail Community Park Phase 2 improvements call for a concrete roadway, parking lot, skate park, playground, shelter, soccer field, walking trail and pier platform at the pond. Concurrently, master plans are being designed for Deer Meadow and McPherson Parks for the construction of typical phase one park amenities. Candleridge Park will also undergo design and construction drainage improvements, dam restoration and erosion control improvements.

<b>PPD 1: 5-Year Work Plan</b>	
<b>Playgrounds</b>	<b>Reserve Park Development</b>
Camelot Park	Deer Meadow Park
Candleridge Park	McPherson Park
C.P. Hadley Park	Parkwood East Park
Southwest Park Community Center	Trail Lake Estates Park
Westcreek Park	
	<b>Park Security Lighting</b>
<b>Drainage and Erosion Control</b>	C.P. Hadley Park
Candleridge Park	Creekside Park
	Fox Run Park
<b>Park Improvements</b>	Kraus Baker Park
Chisholm Trail Community Park	Little People Park
Hulen Meadows Park	South Meadows Park
Willowcreek Park	Sundance Springs Park
	Westcreek Park
	Woodmont Park
	Willowcreek Park

## Park Planning District 2 - Inventory and Facilities



PPD 2 is bounded on the north by Bonds Ranch Road, on the south by Aledo Road, on the east by West Loop 820 and on the west by the City of Fort Worth city limits. Lake Worth is part of the City’s water supply system and affords the citizens numerous opportunities for water based recreation activities such as boating, swimming and fishing. The concentration of park acreage around this body of water is a critical asset to the park system and the City.

## Park Planning District 2 - Inventory and Facilities

PARK	TIER	YEAR	ACRES	PARK	TIER	YEAR	ACRES
Camp Joy	Neighborhood Based	1918	8.23	Anderson	Community Based	1998	34.59
Chuck Silcox	Neighborhood Based	2009	20.81	Arrow S	Community Based	1918	37.80
Eagle Mountain Ranch	Neighborhood Based	2000	4.32	Casino Beach	Community Based	1918	44.00
Falcon Ridge	Neighborhood Based	2006	6.47	Chapel Hill	Community Based	2019	68.17
Freemons	Neighborhood Based	1918	17.39	Marine Creek Lake	Community Based	1984	69.97
George Markos	Neighborhood Based	1973	29.69	Marine Creek Ranch	Community Based	2008	42.96
Island View	Neighborhood Based	1918	14.00	Mosque Point	Community Based	1918	80.00
Live Oak	Neighborhood Based	1918	7.85	West Park	Community Based	2001	212.20
Love Circle	Neighborhood Based	1918	50.00	Wildwood North	Community Based	1918	<u>124.35</u>
Malaga	Neighborhood Based	1918	2.00				714.04
Marina	Neighborhood Based	1918	5.00				
Remington Pointe	Neighborhood Based	1999	10.56				
Settlement Plaza	Neighborhood Based	2000	10.40				
Sunset	Neighborhood Based	1918	10.00				
Twin Mills	Neighborhood Based	2006	10.93	Fort Worth Nature Center and Refuge	Special Use & Nature Based	1918	3,632.87
Vinca Circle	Neighborhood Based	1918	5.19	Goat Island	Special Use & Nature Based	1918	6.00
Vista West	Neighborhood Based	2007	5.03	Greer Island	Special Use & Nature Based	1918	20.00
Wildwood	Neighborhood Based	1918	<u>6.00</u>	J.T. Hinkle	Special Use & Nature Based	2002	<u>5.99</u>
			223.87				3,664.86



## Plan Prioritization & Implementation of Needs

### PPD 2: Prioritization of Needs

- Hike/Bike/Walking Trails
- Traditional Park Amenities
- Facility Reinvestment
- Open Spaces/Natural Areas
- Dog Parks

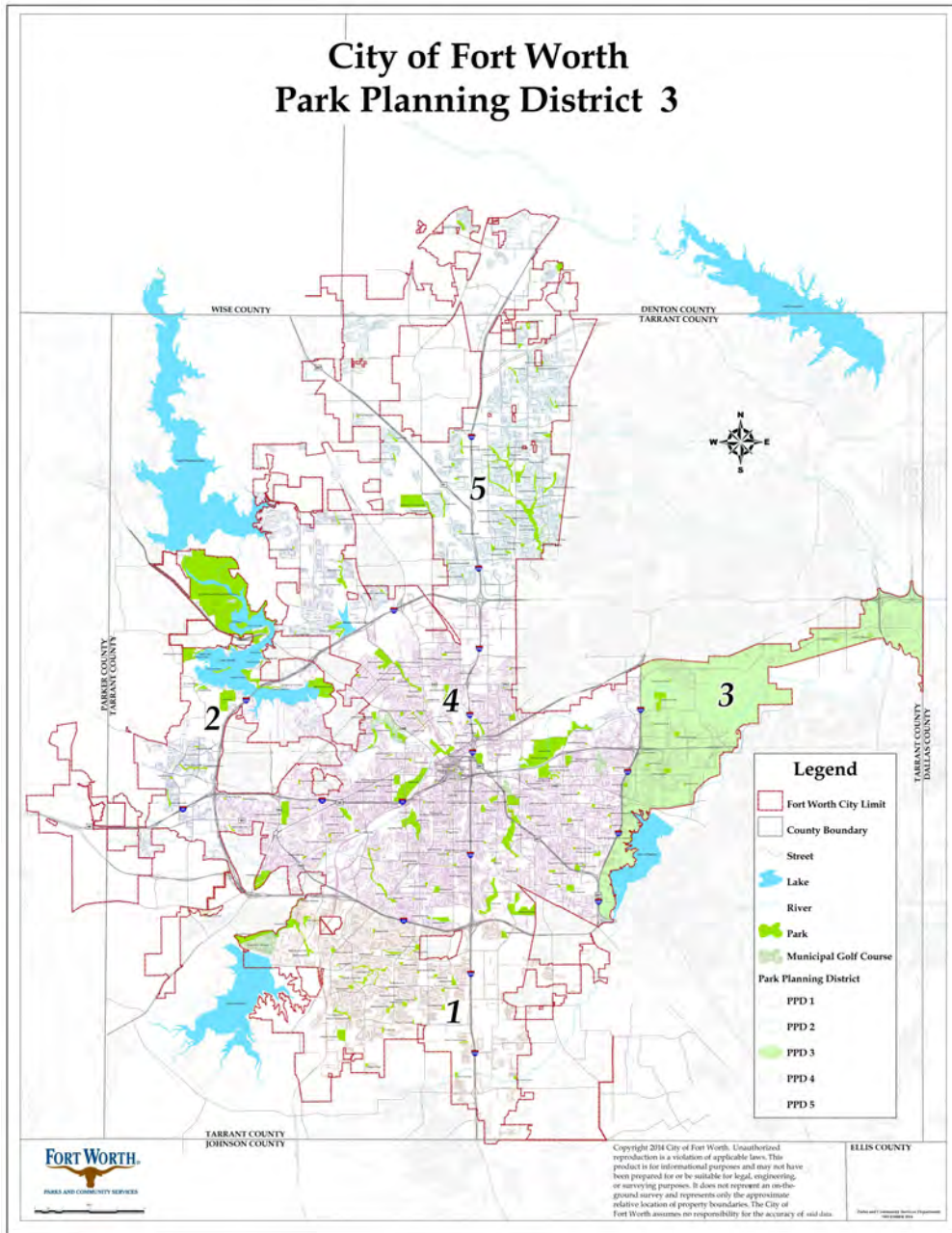
### PPD 2: Plan Implementation of Needs

Park Planning District 2 projects include a mix of recreational needs that have been identified and addressed in the five-year work plan noted below, and include projects funded through Bond Programs, as well as other funding sources.

The Lake Worth Trails project will be constructed in two phases and includes the construction of an off-street hike and bike trail system starting at the Trinity Trails network near Anahuac Street and continues through the YMCA’s Camp Carter, Marion Sansom Park and along Lake Worth through Windswept Circle Park, Plover Circle Park and end at Arrow "S" Park.

PPD 2: 5-Year Work Plan
<b>Playgrounds</b>
Casino Beach Park
<b>Park Improvements</b>
Nature Center & Refuge Greer Island Composting Toilet
Nature Center & Refuge Harwicke Center Renovations
<b>Reserve Park Development</b>
Marine Creek Lake Park
Marine Creek Ranch Park
<b>Walks and Trails</b>
Lake Worth Trail
Nature Center & Refuge Boardwalk

## Park Planning District 3 - Inventory and Facilities



PPD 3 is bounded on the north by SH-121/Airport Freeway, on the south by IH-20, on the east by the City of Fort Worth city limits and on the west by East Loop 820. The dominant natural feature of PPD 3 is the West Fork of the Trinity River. The river corridor in this district provides the opportunity to link the Central City with the open space system of North Central Texas. Efforts are currently underway to continue the trail connection from the Fort Worth portion of the Trinity Trail System to the larger trail system that is currently planned to extend for 250 miles and traverse four counties and eighteen municipalities.

## Park Planning District 3 - Inventory and Facilities

PARK	TIER	YEAR	ACRES
Cobblestone Trail	Neighborhood Based	1971	24.27
Eastbrook	Neighborhood Based	1979	3.20
Ederville	Neighborhood Based	1974	0.91
Eugene McCray Park at Lake Arlington	Neighborhood Based	1986	6.07
Mosier Valley	Neighborhood Based	2015	5.09
Post Oak Village	Neighborhood Based	1981	6.00
River Trails III	Neighborhood Based	1998	4.46
Sandy Lane	Neighborhood Based	1967	28.70
Sandybrook	Neighborhood Based	1984	2.92
Stonecreek	Neighborhood Based	2002	10.21
Sunset Hills	Neighborhood Based	1960	<u>7.54</u>
			99.37

PARK	TIER	YEAR	ACRES
Handley	Community Based	1948	15.45
Mallard Cove	Community Based	2003	<u>103.92</u>
			119.37

## Plan Prioritization & Implementation of Needs

### PPD 3: Prioritization of Needs

- Hike/Bike/Walking Trails
- Traditional Park Amenities
- Practice/Multi-use Fields
- Open Spaces/Natural Areas
- Facility Reinvestment

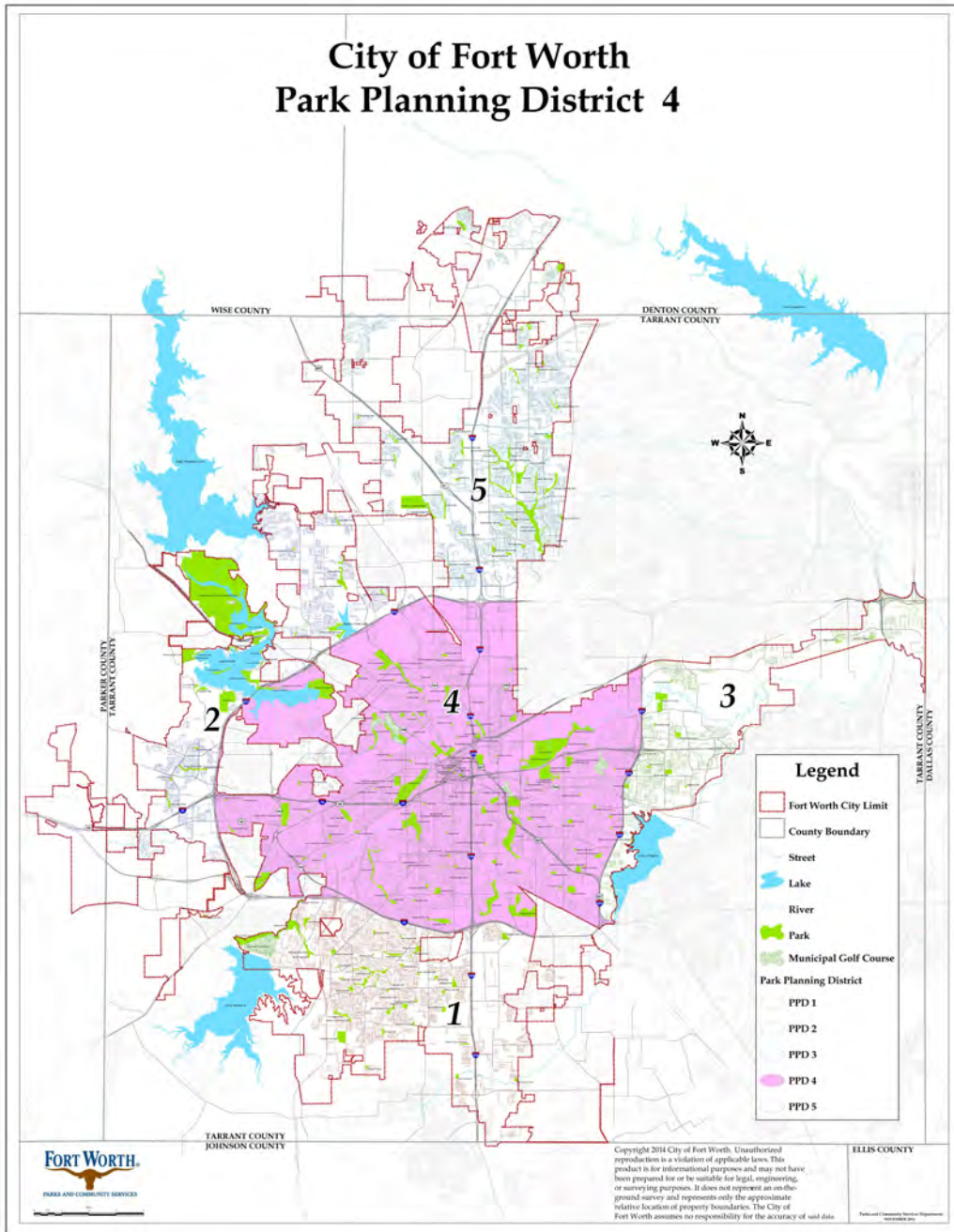
### PPD 3: Plan Implementation of Needs

The following projects located in Park Planning District 3 are included in the Department’s 5-year work plan, and include projects that are funded through Bond Programs and other funding sources. Design and construction for the expansion of the Trinity Trails system, including, but not limited to, connecting from River Trails Park in Fort Worth to River Legacy Park at the boundary with the City of Arlington and locations where city funds can be leveraged through grants and partnerships with other organizations and agencies to create expanded recreational and accessible trail opportunities.

New trails and bridges from Quanah Parker Park to the City of Arlington trail system will be constructed. Phase 1 of the project will construct trails from Handley Ederville Road to River Trails Park. Phase 2 of the project has not started.

PPD 3: 5-Year Work Plan
<b>Drainage and Erosion Control</b>
Stonecreek Park
Sunset Hills Park
<b>Park Security Lighting</b>
Eugene McCray Park at Lake Arlington
<b>Playgrounds</b>
Eugene McCray Park at Lake Arlington
Sandybrook Park
<b>Park Improvements</b>
Eastbrook Park
<b>Walks and Trails</b>
Centreport Trail
Ederville Park
River Trails Park to River Legacy Park Trail

## Park Planning District 4 - Inventory and Facilities



This PPD encompasses the area within Loop 820 and consists of the Central Business District that continues to experience a renaissance of renewal and growth. Parks in this system provide a linkage to the open space and trail corridor of the Trinity River. This PPD also has an adequate supply of special use and urban parks that enhance small pockets of open space in the urban core.



## Park Planning District 4 - Inventory and Facilities

PARK	TIER	YEAR	ACRES	PARK	TIER	YEAR	ACRES
Anderson-Campbell	Neighborhood Based	1999	24.22	Maddox	Neighborhood Based	1905	0.96
Arneson	Neighborhood Based	1911	0.44	Marie F. Pate	Neighborhood Based	1968	5.00
Arnold	Neighborhood Based	1914	3.02	Marine Creek Linear	Neighborhood Based	1984	48.32
Blue Bonnet Circle	Neighborhood Based	1949	1.25	Marine Creek Linear North	Neighborhood Based	1996	7.83
Bonnie Brae	Neighborhood Based	1957	3.70	Mary and Marvin Leonard	Neighborhood Based	1960	6.53
Bunche	Neighborhood Based	1954	10.09	Meadowood	Neighborhood Based	1935	1.75
Burk Burnett	Neighborhood Based	1917	3.03	Monticello	Neighborhood Based	1928	4.24
Calhoun	Neighborhood Based	2019	0.38	Morningside Middle School	Neighborhood Based	1985	3.73
Capps	Neighborhood Based	1910	4.41	Morris Berney	Neighborhood Based	1926	4.50
Chamberlin	Neighborhood Based	1962	9.59	Newby	Neighborhood Based	1951	2.75
Circle	Neighborhood Based	1909	3.06	Normandy Place	Neighborhood Based	1949	1.50
City Hall Plaza	Neighborhood Based	1975	2.50	Oakhurst	Neighborhood Based	1944	0.75
Crawford	Neighborhood Based	2019	0.31	Paddock	Neighborhood Based	1917	0.80
Crestwood	Neighborhood Based	1982	2.00	Parque Unidad/Unity Park	Neighborhood Based	1923	8.58
Daggett	Neighborhood Based	1980	3.40	Paz Hernandez	Neighborhood Based	1977	0.41
Delga	Neighborhood Based	1968	4.06	Peter Smith	Neighborhood Based	1903	0.10
Diamond Hill H.S.	Neighborhood Based	1982	0.10	Plover Circle	Neighborhood Based	1918	4.00
Eastern Hills	Neighborhood Based	1981	3.00	Ridglea Hills	Neighborhood Based	1983	6.10
Eastgate	Neighborhood Based	2015	0.96	River Park	Neighborhood Based	1984	11.63
Eastover	Neighborhood Based	1947	13.50	Rodeo	Neighborhood Based	1971	5.46
Ed K. Collett	Neighborhood Based	1971	7.69	Rosedale Plaza	Neighborhood Based	1969	6.25
Edgewood	Neighborhood Based	2017	1.89	Rosen	Neighborhood Based	1971	8.80
Ellis	Neighborhood Based	1971	10.51	Ryan Place Triangle	Neighborhood Based	1974	0.27
Elm Street	Neighborhood Based	2002	0.28	Sagamore Hills	Neighborhood Based	1968	4.15
Englewood	Neighborhood Based	1973	1.06	Seminary Hills	Neighborhood Based	1968	6.18
Fairfax	Neighborhood Based	1968	4.00	Shackleford	Neighborhood Based	1984	11.97
Fairmount	Neighborhood Based	1990	0.68	Smith-Wilemon	Neighborhood Based	1998	3.23
Federal Plaza	Neighborhood Based	1984	0.60	Springdale	Neighborhood Based	1958	4.00
First Flight	Neighborhood Based	2013	0.61	Stephens	Neighborhood Based	1984	4.00
Foster	Neighborhood Based	1952	11.92	Stratford	Neighborhood Based	1924	15.00
General Worth Square	Neighborhood Based	1980	1.53	Tadlock	Neighborhood Based	1959	4.50
Gid Hooper	Neighborhood Based	1976	2.58	Tandy Hills	Neighborhood Based	1960	15.00
Goodman	Neighborhood Based	1967	0.14	Terry	Neighborhood Based	1970	0.43
Greenway	Neighborhood Based	1926	12.96	Thorny Ridge	Neighborhood Based	1982	3.76
Hall-Tandy Triangle	Neighborhood Based	1900	0.32	Tim Watson	Neighborhood Based	2016	7.91
Harrold	Neighborhood Based	1950	2.30	Titus Paulsel	Neighborhood Based	1994	10.00
Harvey Street	Neighborhood Based	1978	0.94	Traders Oak	Neighborhood Based	1953	3.28
Haynes Memorial Triangle	Neighborhood Based	1893	0.10	Village Creek	Neighborhood Based	1959	24.31
High Crest	Neighborhood Based	2006	0.74	Watts	Neighborhood Based	2008	0.91
Hyde	Neighborhood Based	1873	0.01	Wesleyan Hills	Neighborhood Based	2017	0.55
Jennings-May-St. Louis	Neighborhood Based	1997	0.85	Western Hills	Neighborhood Based	1965	17.89
Kellis	Neighborhood Based	1950	16.30	Westwind	Neighborhood Based	1981	2.10
Lebow	Neighborhood Based	2019	9.53	William McDonald	Neighborhood Based	1981	13.85
Lincoln	Neighborhood Based	1934	7.00	Windswept Circle	Neighborhood Based	1918	3.00
Linwood-Jesse D. Sandoval	Neighborhood Based	1957	4.00	Worth Hills	Neighborhood Based	1972	1.50
Littlejohn	Neighborhood Based	1972	0.83	Wright Tarlton	Neighborhood Based	1969	<u>0.70</u>
Louella Bales Baker	Neighborhood Based	1998	<u>0.96</u>				298.48

193.34

## Park Planning District 4 - Inventory and Facilities Continued

PARK	TIER	YEAR	ACRES	PARK	TIER	YEAR	ACRES
Arrow S	Community Based	1918	37.80	Botanic Garden	Special Use & Nature Based	1892	116.56
Buck Sansom	Community Based	1927	131.60	Fort Worth Zoo	Special Use & Nature Based	1910	58.53
Calmont	Community Based	2019	4.34	Log Cabin Village	Special Use & Nature Based	1910	2.50
Carter	Community Based	1951	163.48	Meadowbrook Golf Course	Special Use & Nature Based	1937	138.90
Cobb	Community Based	1923	224.76	Rockwood Golf Course	Special Use & Nature Based	1927	229.49
Como Community Center Park	Community Based	1973	1.20	Rolling Hills	Special Use & Nature Based	1971	207.29
Diamond Hill	Community Based	1968	9.88	Saunders	Special Use & Nature Based	1977	0.48
Echo Lake	Community Based	2017	41.33	Stratford Nature Area	Special Use & Nature Based	1924	35.00
Eugene McCray Community Center Park	Community Based	2000	3.00	Sycamore Creek Golf Course	Special Use & Nature Based	1977	66.22
Far Northside	Community Based	1976	3.22	Tandy Hills Nature Area	Special Use & Nature Based	1960	90.25
Fire Station Community Center	Community Based	1975	3.05	Trinity Bluff	Special Use & Nature Based	2009	1.84
Forest Park	Community Based	1910	120.88	Veterans Memorial	Special Use & Nature Based	1923	0.51
Gateway	Community Based	1979	635.11	Water Gardens	Special Use & Nature Based	1974	5.40
Glenwood	Community Based	1927	36.92	Will Rogers Memorial Center Complex	Special Use & Nature Based	1900	<u>32.00</u>
Greenbriar	Community Based	1973	49.12				984.97
Harmon Field	Community Based	1952	97.50				
Heritage	Community Based	1975	112.81				
Hillside	Community Based	1911	24.30				
Lake Como	Community Based	1950	59.14				
Marine	Community Based	1894	12.00				
Marion Sansom	Community Based	1933	264.00				
Martin Luther King	Community Based	1969	5.78				
North Z. Boaz	Community Based	1928	138.30				
Northside	Community Based	1946	15.00				
Oakland Lake	Community Based	1927	69.00				
Overton	Community Based	1959	48.68				
Prairie Dog	Community Based	1970	39.56				
Quanah Parker	Community Based	1997	68.00				
Riverside	Community Based	1974	30.80				
Rockwood	Community Based	1927	50.46				
Rosemont	Community Based	1927	30.40				
Southside Community Center Park	Community Based	1993	2.00				
Sycamore	Community Based	1909	88.02				
Sylvania	Community Based	1926	29.22				
Thomas Place	Community Based	1970	2.76				
Trail Drivers	Community Based	1928	39.61				
Trinity	Community Based	1892	252.00				
Victory Forest: South Central Community Center	Community Based	2010	11.07				
Worth Heights	Community Based	1968	0.58				
Z. Boaz South	Community Based	1928	<u>134.38</u>				
			3,091.05				

## Plan Prioritization & Implementation of Needs

### PPD 4: Prioritization of Needs

- Hike/Bike/Walking Trails
- Open Spaces/Natural Areas
- Facility Reinvestment
- Traditional Park Amenities
- Practice/Multi-use Fields

### PPD 4: Plan Implementation of Needs

Projects that will be initiated and completed within the next five years include the Diamond Hill Community Center being demolished due to age, functional obsolescence, and insufficient space for programming needs. Design and construction of a new facility and associated site improvements are forthcoming and include, but not limited to, a boxing gym, fitness area, gymnasium and meeting rooms.

The North Z Boaz Park master plan will be updated and implemented. Amenities include construction of athletic fields, park trail, picnic facilities, fitness area, playground, recreational courts, parking and supporting infrastructure and equipment.

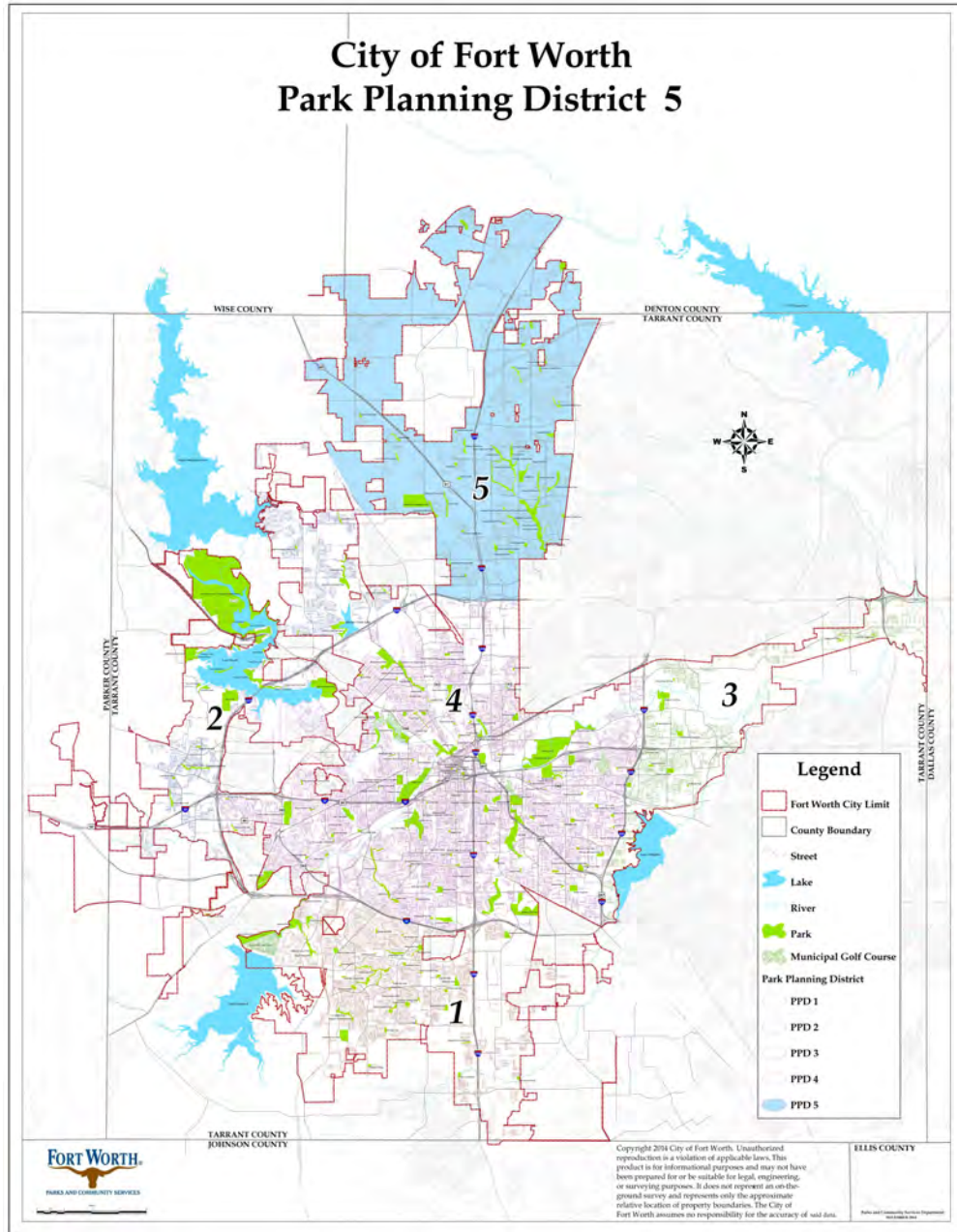
Rockwood Park Golf Course Clubhouse is on schedule to be demolished followed by the design and construction of a new clubhouse facility with cart barn, and renovation of the existing golf course maintenance and support facilities. The Sycamore Creek Golf Course will be repurposed as a community park. A master plan will be commissioned to study the layout of roads and parking, a trail system, park infrastructure and landscaping at both Sycamore Creek Golf Course and Sycamore Park in an effort to integrate both into a larger park serving nearby neighborhoods. The Sycamore Community Center will undergo renovation and rehabilitation to accommodate program expansion, enhanced lighting, replacement of the gym floor and address structural issues.

<b>PPD 4: 5-Year Work Plan</b>	
<b>Drainage and Erosion Control</b>	<b>Park Security Lighting</b>
Forest Park	Englewood Park
Lake Como Park	Fairmount Park
Oakland Lake Park	Gateway Park (Fort Woof Dog Park)
Kellis Park	Harmon Field Park
Overton Park	Maddox Park
Sycamore Park	Meadowood Park
Trinity Park	Oakland Lake Park
	Springdale Park
<b>Park Roads and Parking Lots</b>	Tadlock Park
Forest Park	Worth Heights Park
Sycamore Park	
Gateway Park	
Rockwood Park	
Sycamore Park	



<b>PPD 4: 5-Year Work Plan...Continued</b>	
<b>Playgrounds</b>	<b>Park Improvements</b>
Daggett Park	Arnold Park Tennis Court & Shelter
Ellis Park	Eastover Park
Foster Park North and South	Edgewood Park
Gid Hooper Park	Fairfax Park
Glenwood Park	Fire Station Community Center Park
Harrold Park	Glenwood Park
Hillside Park	Greenbriar Park
Jennings-May-St. Louis Park	Greenway Park
Lake Como Park	Heritage Park
Littlejohn Park	Marie F. Pate Park
Louella Bales Baker Park	Marine Creek Linear Park
Marine Park	Normandy Place Park
Marine Creek Linear Park North	Riverside Park Trinity River Vision Renovation & Development
Meadowbrook Golf Course	Rockwood Golf Course Clubhouse & Maintenance Facility
Morris E. Berney Park	Stratford Park
Oakhurst Park	Tandy Hills Park
Overton Park	Z Boaz Park North
Quanah Parker Park	Z Boaz Park South
Ridglea Hills Park	
River Park	<b>Walks and Trails</b>
Sycamore Park	Gateway Park (East 1st Street Bridge to Quanah Parker Park)
Trinity Park	Gid Hooper Park
Worth Heights Park	Log Cabin Village
Worth Hills Park	Oakland Lake Park
Wright-Tarlton Park	Overton Park
	Quanah Parker Park
<b>Reserve Park Development</b>	Rosen Park Trail Connection
Bunch Park - Phase 2	Sycamore Park
Tim Watson Park	
Wesleyan Hills Park	<b>Community Centers</b>
	Diamond Hill Community Center
	Northside Community Center
	Sycamore Community Center

## Park Planning District 5 - Inventory and Facilities



PPD 5 is bounded on the north and east by the City of Fort Worth city limits, on the south by North Loop 820, on the west by Business 287/81. Public and private partnerships that have evolved as a result of the *Neighborhood and Community Park Dedication Policy* have contributed to the establishment of the Arcadia Trail parks and an even distribution of neighborhood parks that service this rapidly developing area. The Arcadia Trail parks line the banks of Whites Branch Creek, a tributary of Big Fossil Creek, which in turn flows into the West Fork of the Trinity River. Whites Branch Creek offers the opportunity to continue to expand the open space and trail system along its banks to the north as this area continues to develop.

## Park Planning District 5 - Inventory and Facilities

PARK	TIER	YEAR	ACRES
Alexandra Meadows	Neighborhood Based	2005	7.53
Arcadia Trail Park South	Neighborhood Based	1996	40.14
Babbling Brook	Neighborhood Based	2018	8.54
Barksdale	Neighborhood Based	2009	20.80
Bronzewood	Neighborhood Based	2018	2.60
Camp Worth	Neighborhood Based	2012	0.39
Chisholm Ridge	Neighborhood Based	2007	31.29
Crawford Farms	Neighborhood Based	2004	7.00
Creekwood	Neighborhood Based	2018	30.71
Crossing at Fossil Creek	Neighborhood Based	2000	4.02
Dorado	Neighborhood Based	2009	14.27
Friendship	Neighborhood Based	2015	5.53
Harvest Ridge	Neighborhood Based	2005	6.38
Heritage Glen	Neighborhood Based	2005	28.84
Junction	Neighborhood Based	2011	6.20
Kingsridge	Neighborhood Based	2011	19.98
Kingsridge West	Neighborhood Based	2018	28.40
Kristi Jean Burbach	Neighborhood Based	1984	14.71
Lost Creek Ranch	Neighborhood Based	2007	4.20
Lost Spurs	Neighborhood Based	2000	9.96
McPherson Ranch	Neighborhood Based	2008	7.43
Mesa Verde	Neighborhood Based	1993	0.30
Ninnie Baird	Neighborhood Based	2009	15.53
Park Place	Neighborhood Based	1995	5.80
Parkwood Hills	Neighborhood Based	1998	8.64
Ponderosa	Neighborhood Based	2018	15.24
Ranches East	Neighborhood Based	2007	18.52
Reata	Neighborhood Based	2010	8.12
Ridgeview Farms	Neighborhood Based	2007	7.32
Saratoga	Neighborhood Based	2014	21.12
Sendera Ranch	Neighborhood Based	2017	33.96
Silver Sage	Neighborhood Based	1982	10.46
Sinclair	Neighborhood Based	2009	16.48
Summerbrook	Neighborhood Based	1985	27.27
Summerfields	Neighborhood Based	1978	9.40
Summerfields Chisholm	Neighborhood Based	1995	4.54
Summerfields Northwest	Neighborhood Based	1985	4.99
Sunset Hills North	Neighborhood Based	2004	6.73
Tehama Ridge	Neighborhood Based	2011	3.18
Timberland	Neighborhood Based	2018	2.70
Trails of Fossil Creek	Neighborhood Based	2011	10.26
West Fork Ranch	Neighborhood Based	2014	4.77
Willow Ridge	Neighborhood Based	2008	5.31
Woodland Springs	Neighborhood Based	2001	<u>25.06</u>
			564.60

PARK	TIER	YEAR	ACRES
Alliance	Community Based	2019	163.75
Arcadia Trail	Community Based	1990	69.08
Arcadia Trail Park North	Community Based	1994	177.24
Chadwick Farms	Community Based	2009	39.19
Harriet Creek Ranch	Community Based	2005	32.17
Heritage Addition	Community Based	2001	36.79
North	Community Based	1999	61.52
Northwest Community	Community Based	2011	<u>245.77</u>
			825.50

PARK	TIER	YEAR	ACRES
Coventry Hills	Special Use & Nature Based	2001	21.55
Lasater	Special Use & Nature Based	2004	25.13
Tehama Trails	Special Use & Nature Based	2011	22.84
Vinyards at Heritage	Special Use & Nature Based	2001	<u>44.15</u>
			113.67

## Plan Prioritization & Implementation of Needs

### PPD 5: Plan Prioritization of Needs

- Hike/Bike/Walking Trails
- Traditional Park Amenities
- Open Spaces/Natural Areas
- Dog Park
- Practice and Competition Fields

### PPD 5: Plan Implementation of Needs

The Bond Program placed a priority in the development of athletic facilities in PPD 5, allocating resources for projects such as the development of Alliance Park. Implementation of the park master plan for this new community park in far north Fort Worth includes the construction of athletic fields with lighting, trails, parking, security lighting, and supporting infrastructure and equipment. In addition, funds were allocated for the pursuit of athletic facility partnerships in this sector of the city; specifically, the projects will include a partnership with Northwest Independent School District for an athletic complex development at the Northwest High School campus.

Design and construction of a new community center at Northwest Community Park is in progress. The community center will contain a gymnasium, fitness area with equipment, and meeting rooms with a goal of leveraging City funds through partnerships with other organizations, agencies, municipalities or school districts and create expanded recreational opportunities, address expanded partnership initiatives or improve accessibility.

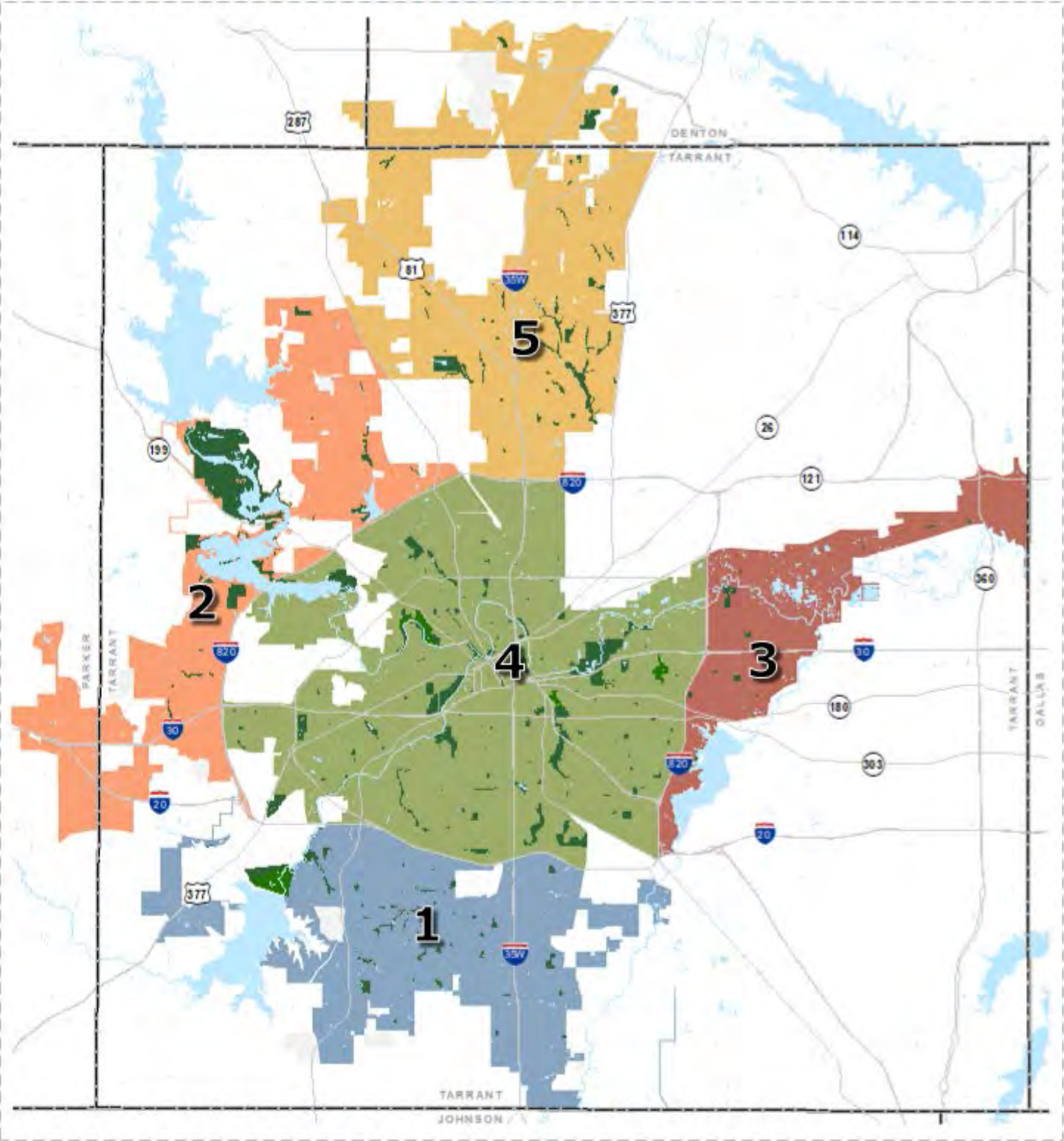
<b>PPD 5: 5-Year Work Plan</b>	
<b>Walks and Trails</b>	<b>Playgrounds</b>
Arcadia Trail Park South Trail Connection	Arcadia Trail Park
	Arcadia Trail Park North
<b>Reserve Park Development</b>	Arcadia Trail Park South
Kingsridge Park	Heritage Glen Park
Vineyards at Heritage Park	Kristi Jean Burbach Park
	Lost Spurs Park
<b>Drainage and Erosion Control</b>	
Arcadia Trail Park Bridge Repair	<b>Park Improvements</b>
Arcadia Trail Park	Alliance Park
Summerbrook Park	Coventry Hills Park
	Crawford Farms Park
<b>Park Roads and Parking Lots</b>	North Park
Northwest Community Park - North Road	
Northwest Community Park - South Drive CC	<b>Park Security Lighting</b>
	Kristi Jean Burbach Park
<b>Community Center</b>	Lasater Park
Northwest Community Center	Silver Sage Park
	Summerbrook Park
	Summerfields Park



# Appendix



# 2020 - City of Fort Worth Park Planning Districts



# Park Facility Inventory



## 2020 PARK INVENTORY

PARK	TYPE	TIER	ADDRESS	YEAR	ACRES	STATUS	C_DIST	ISD	PPD
Alexandra Meadows	NEIGHBORHOOD	Neighborhood Based	6521 MARK IV PKWY	2005	7.5260	Act	2	EMSISD	5
Alliance	COMMUNITY	Community Based	3800 LITSEY RD	2019	163.7520	Res	7	NWISD	5
Anderson	COMMUNITY	Community Based	5052 CROMWELL-MARINE CREEK RD	1998	34.5940	Act	2	EMSISD	2
Anderson-Campbell	NEIGHBORHOOD	Neighborhood Based	4141 OHIO GARDEN RD	1999	24.2200	Act	2	CSTLBRY	4
Arcadia Trail	COMMUNITY	Community Based	7613 ARCADIA TRL	1990	69.0790	Act	4	KISD	5
Arcadia Trail Park North	COMMUNITY	Community Based	8744 ARCADIA PARK DR	1994	177.2365	Act	4	KISD	5
Arcadia Trail Park South	NEIGHBORHOOD	Neighborhood Based	4950 BASSWOOD BLVD	1996	40.1417	Act	4	KISD	5
Arneson	URBAN	Neighborhood Based	1311 HOMAN AVE	1911	0.4400	Act	2	FWISD	4
Arnold	POCKET	Neighborhood Based	700 SAMUELS AVE	1914	3.0220	Act	9	FWISD	4
Arrow S	COMMUNITY	Community Based	7951 CAHOBA DR	1918	37.8000	Act	7	FWISD	2 & 4
Babbling Brook	NEIGHBORHOOD	Neighborhood Based	11716 BABBLING BROOK DR	2018	8.5410	Act	7	KISD	5
Barksdale	NEIGHBORHOOD	Neighborhood Based	9611 BARKSDALE DR	2009	20.8020	Act	4	KISD	5
Blue Bonnet Circle	URBAN	Neighborhood Based	3489 BLUEBONNET CIR	1949	1.2500	Act	9	FWISD	4
Bonnie Brae	POCKET	Neighborhood Based	3213 WESLEY ST	1957	3.7000	Act	4	FWISD	4
Botanic Garden	SPECIAL USE	Special Use & Nature Based	2000 UNIVERSITY DR	1892	116.5600	Act	7	FWISD	4
Bronzewood	NEIGHBORHOOD	Neighborhood Based	415 BRONZEWOOD LN	2018	2.6000	Act	7	EMSISD	5
Buck Sansom	COMMUNITY	Community Based	3600 SANSOM PARK DR	1927	131.6000	Act	2	FWISD	4
Bunche	NEIGHBORHOOD	Neighborhood Based	5600 RAMEY AVE	1954	10.0900	Act	5	FWISD	4
Burk Burnett	URBAN	Neighborhood Based	501 W 7TH ST	1917	3.0300	Act	9	FWISD	4
C. P. Hadley	NEIGHBORHOOD	Neighborhood Based	5301 WILDFLOWER WAY	2006	28.2240	Act	6	CISD	1
Calhoun	URBAN	Neighborhood Based	409 ANNIE ST	2019	0.3800	Res	9	FWISD	4
Calmont	COMMUNITY	Community Based	8201 CALMONT AVE	2019	4.3430	Res	3	FWISD	4
Camelot	NEIGHBORHOOD	Neighborhood Based	1517 ANDANTE DR	1986	5.2500	Act	8	CISD	1
Camp Joy	NEIGHBORHOOD	Neighborhood Based	9621 WATERCRESS DR	1918	8.2300	Act	7	FWISD	2
Camp Worth	URBAN	Neighborhood Based	4896 BOB WILLS DR	2012	0.3880	Act	4	KISD	5
Candleridge	COMMUNITY	Community Based	4301 FRENCH LAKE DR	1976	88.0310	Act	6	FWISD	1
Capps	POCKET	Neighborhood Based	907 WEST BERRY	1910	4.4100	Act	9	FWISD	4
Carter	COMMUNITY	Community Based	4351 CARTER PARK DR	1951	163.4767	Act	8	FWISD	4
Casino Beach	COMMUNITY	Community Based	7451 WATERCRESS DR	1918	44.0000	Act	7	FWISD	2
Chadwick Farms	COMMUNITY	Community Based	15700 CLEVELAND-GIBBS RD	2009	39.1900	Act	7	NWISD	5
Chamberlin	NEIGHBORHOOD	Neighborhood Based	4689 HALLORAN ST	1962	9.5850	Act	3	FWISD	4
Chapel Hill	COMMUNITY	Community Based	TBD	2019	68.1670	Res	7	EMSISD	2
Chisholm Ridge	NEIGHBORHOOD	Neighborhood Based	8425 LADINA PLACE	2007	31.2900	Act	2	EMSISD	5
Chisholm Trail (formerly Southwest Community Park)	COMMUNITY	Community Based	4936 MCPHERSON BLVD	1998	84.2128	Act	6	CISD	1
Chuck Silcox (formerly Trail Ridge Estates)	NEIGHBORHOOD	Neighborhood Based	2809 WAKECREST DR	2009	20.8100	Act	3	FWISD	2
Circle	URBAN	Neighborhood Based	600 PARK ST	1909	3.0600	Act	2	FWISD	4
City Hall Plaza	URBAN	Neighborhood Based	1000 THROCKMORTON	1975	2.5000	Act	9	FWISD	4
City View	CONSERVANCY	Special Use & Nature Based	7900 OAKMONT BLVD	1985	31.3100	Res	3	FWISD/CISD	1

## 2020 PARK INVENTORY

PARK	TYPE	TIER	ADDRESS	YEAR	ACRES	STATUS	C_DIST	ISD	PPD
Cobb	COMMUNITY	Community Based	1600-3000 COBB DR	1923	224.7635	Act	8	FWISD	4
Cobblestone Trail	NEIGHBORHOOD	Neighborhood Based	7601 JOHN T. WHITE RD	1971	24.2735	Act	5	FWISD	3
Como Community Center Park	COMMUNITY	Community Based	4900 HORNE ST	1973	1.2000	Act	3	FWISD	4
Coventry Hills	GREENBELT	Special Use & Nature Based	8500 WESTERN MEADOWS DR	2001	21.5460	Res	4	KISD	5
Crawford	URBAN	Neighborhood Based	330 CRAWFORD ST	2019	0.3050	Res	9	FWISD	4
Crawford Farms	NEIGHBORHOOD	Neighborhood Based	4224 WEXFORD DR	2004	6.9970	Act	7	KISD	5
Creekside	NEIGHBORHOOD	Neighborhood Based	3100 RODDY DR	1988	16.2300	Act	6	CISD	1
Creekwood	NEIGHBORHOOD	Neighborhood Based	8113 ASH MEADOW DR	2018	30.7060	Act	7	EMSISD	5
Crestwood	POCKET	Neighborhood Based	3701 ROCKWOOD PARK DR	1982	2.0000	Act	7	FWISD	4
Crossing at Fossil Creek	POCKET	Neighborhood Based	6000 MARK IV PKWY	2000	4.0230	Act	2	EMSISD	5
Dabney	POCKET	Neighborhood Based	7501 WHIRLWIND DR	1985	3.4480	Act	6	FWISD	1
Daggett	POCKET	Neighborhood Based	2312 COLLEGE AVE	1980	3.4000	Act	9	FWISD	4
Deer Creek	NEIGHBORHOOD	Neighborhood Based	11800 HEMPHILL ST	1987	11.9900	Act	6	CISD	1
Deer Meadow	NEIGHBORHOOD	Neighborhood Based	11600 S. OAK GROVE RD	2012	8.5030	Res	6	BISD	1
Delga	POCKET	Neighborhood Based	1001 NIXON ST	1968	4.0600	Act	8	FWISD	4
Diamond Hill	COMMUNITY	Community Based	3709 WEBER ST	1968	9.8800	Act	2	FWISD	4
Diamond Hill H.S.	URBAN	Neighborhood Based	1411 MAYDELL ST	1982	0.1000	Act	2	FWISD	4
Dorado	NEIGHBORHOOD	Neighborhood Based	415 BAVERTON LN	2009	14.2690	Act	7	NWISD	5
Eagle Mountain Ranch	POCKET	Neighborhood Based	7200 BUNK HOUSE DR	2000	4.3180	Act	7	EMSISD	2
Eastbrook	POCKET	Neighborhood Based	2728 ESCALANTE AVE	1979	3.2000	Act	5	FWISD	3
Eastern Hills	POCKET	Neighborhood Based	5900 YOSEMITE DR	1981	3.0000	Act	4	FWISD	4
Eastgate	URBAN	Neighborhood Based	729 RIVER HILL LN	2015	0.9588	Act	7	CSTLBRY	4
Eastover	NEIGHBORHOOD	Neighborhood Based	4300 RAMEY AVE	1947	13.5000	Act	5	FWISD	4
Echo Lake	COMMUNITY	Community Based	1000 ECHO LAKE DR	2017	41.3260	Act	9	FWISD	4
Ed K. Collett	NEIGHBORHOOD	Neighborhood Based	4800 WEST VICKERY BLVD	1971	7.6900	Act	3 and 9	FWISD	4
Ederville	URBAN	Neighborhood Based	1455 NOTTINGHAM BLVD	1974	0.9100	Act	5	FWISD	3
Edgewood	NEIGHBORHOOD	Neighborhood Based	4501 E BERRY ST	2017	1.8890	Res	5	FWISD	4
Ellis	NEIGHBORHOOD	Neighborhood Based	3400 S. RIVERSIDE DR	1971	10.5100	Act	8	FWISD	4
Elm Street	URBAN	Neighborhood Based	400 ELM ST	2002	0.2770	Act	9	FWISD	4
Englewood	POCKET	Neighborhood Based	3200 HANGER AVE	1973	1.0600	Act	5	FWISD	4
Eugene McCray Community Center Park	COMMUNITY	Community Based	4932 WILBARGER ST	2000	3.0000	Act	5	FWISD	4
Eugene McCray Park at Lake Arlington	NEIGHBORHOOD	Neighborhood Based	3449 QUAIL RD	1986	6.0700	Act	5	FWISD	3
Fairfax	POCKET	Neighborhood Based	4000 EAST FAIRFAX AVE	1968	4.0000	Act	8	FWISD	4
Fairmount	URBAN	Neighborhood Based	1501 5TH AVE	1990	0.6800	Act	9	FWISD	4
Falcon Ridge	NEIGHBORHOOD	Neighborhood Based	498 BROADLEAF DR	2006	6.4700	Act	3	WSISD	2
Far Northside	COMMUNITY	Community Based	2950 ROOSEVELT AVE	1976	3.2200	Act	2	FWISD	4
Federal Plaza	URBAN	Neighborhood Based	1000 THROCKMORTON ST	1984	0.6000	Act	9	FWISD	4
Fire Station Community Center	COMMUNITY	Community Based	1601 LIPSCOMB ST	1975	3.0500	Act	9	FWISD	4

## 2020 PARK INVENTORY

PARK	TYPE	TIER	ADDRESS	YEAR	ACRES	STATUS	C_DIST	ISD	PPD
First Flight	URBAN	Neighborhood Based	2700 MERCEDES AVE	2013	0.6136	Act	9	FWISD	4
Forest Park	COMMUNITY	Community Based	1500-2000 COLONIAL PKWY	1910	120.8780	Act	9	FWISD	4
Fort Worth Nature Center and Refuge	CONSERVANCY	Special Use & Nature Based	9601 FOSSIL RIDGE RD	1918	3,632.8709	Act	7	FWISD	2
Fort Worth Zoo	SPECIAL USE	Special Use & Nature Based	1500-2000 COLONIAL PKWY	1910	58.5319	Act	9	FWISD	4
Foster	NEIGHBORHOOD	Neighborhood Based	3725 SOUTH DR	1952	11.9200	Act	3	FWISD	4
Fox Run	NEIGHBORHOOD	Neighborhood Based	8777 FOX MEADOW WAY	1998	9.7890	Act	6	CISD	1
Freemons	NEIGHBORHOOD	Neighborhood Based	9850 HERON DR	1918	17.3920	Act	7	WSISD	2
Friendship	NEIGHBORHOOD	Neighborhood Based	9550 CHUPAROSA DR	2015	5.5330	Act	7	NWISD	5
Gateway	METROPOLITAN	Community Based	751 BEACH ST	1979	635.1110	Act	4	FWISD	4
General Worth Square	URBAN	Neighborhood Based	916 MAIN ST	1980	1.5300	Act	9	FWISD	4
George Markos	NEIGHBORHOOD	Neighborhood Based	400 ACADEMY BLVD	1973	29.6900	Act	3	WSISD	2
Gid Hooper	POCKET	Neighborhood Based	814 S. RETTA ST	1976	2.5820	Act	8	FWISD	4
Glenwood	COMMUNITY	Community Based	900 S. RIVERSIDE DR	1927	36.9184	Act	8	FWISD	4
Goat Island	CONSERVANCY	Special Use & Nature Based	8298 MALAGA DR	1918	6.0000	Act	7	FWISD	2
Goodman	URBAN	Neighborhood Based	5413 GOODMAN AVE	1967	0.1420	Act	3	FWISD	4
Greenbriar	COMMUNITY	Community Based	5200 HEMPHILL ST	1973	49.1221	Act	9	FWISD	4
Greenway	NEIGHBORHOOD	Neighborhood Based	2013 EAST BELKNAP ST	1926	12.9600	Act	8	FWISD	4
Greer Island	CONSERVANCY	Special Use & Nature Based	7700 SHORELINE RD	1918	20.0000	Act	7	FWISD	2
Hallmark	COMMUNITY	Community Based	820 SYCAMORE SCHOOL RD	1963	25.3530	Act	8	EISD	1
Hall-Tandy Triangle	URBAN	Neighborhood Based	2901 E. ROSEDALE ST.	1900	0.3200	Act	8	FWISD	4
Handley	COMMUNITY	Community Based	6201 BEATY ST	1948	15.4500	Act	5	FWISD	3
Harmon Field	COMMUNITY	Community Based	1501 MARTIN LUTHER KING JR. FRWY	1952	97.5000	Act	8	FWISD	4
Harriet Creek Ranch	COMMUNITY	Community Based	16215 COWBOY TRAIL	2005	32.1680	Act	7	NWISD	5
Harrold	POCKET	Neighborhood Based	1502 SUMMIT AVE	1950	2.3000	Act	9	FWISD	4
Harvest Ridge	NEIGHBORHOOD	Neighborhood Based	13025 HARVEST RIDGE RD	2005	6.3790	Act	7	KISD	5
Harvey Street	URBAN	Neighborhood Based	1413 HARVEY ST	1978	0.9400	Act	8	FWISD	4
Haynes Memorial Triangle	URBAN	Neighborhood Based	1701 MAIN ST	1893	0.1000	Act	9	FWISD	4
Heritage	COMMUNITY	Community Based	300 N. MAIN/600 CONGRESS ST	1975	112.8080	Act	2 and 9	FWISD	4
Heritage Addition	COMMUNITY	Community Based	3600 BLK HERITAGE TRACE PKWY	2001	36.7900	Act	4	KISD	5
Heritage Glen	NEIGHBORHOOD	Neighborhood Based	4400 HERITAGE GLEN DR	2005	28.8420	Act	4	KISD	5
High Crest	URBAN	Neighborhood Based	2515 BRUCE ST	2006	0.7440	Act	2	FWISD	4
Highland Hills	COMMUNITY	Community Based	1600 GLASGOW RD	1968	28.6590	Act	8	EISD	1
Hillside	COMMUNITY	Community Based	1201 E. MADDOX AVE	1911	24.2984	Act	8	FWISD	4
Hulen Meadows	NEIGHBORHOOD	Neighborhood Based	3600 BLUE SPRINGS DR	1986	23.0400	Act	6	CISD	1
Hyde	URBAN	Neighborhood Based	201 WEST 9TH ST	1873	0.0100	Act	9	FWISD	4
Island View	NEIGHBORHOOD	Neighborhood Based	8401 WATERCRESS DR	1918	14.0000	Act	7	FWISD	2
J.T. Hinkle	GREENBELT	Special Use & Nature Based	6521 SHADYDELL DR	2002	5.9900	Act	7	EMSISD	2
Jennings-May-St. Louis	URBAN	Neighborhood Based	3041 SOUTH JENNINGS AVE	1997	0.8500	Act	9	FWISD	4

## 2020 PARK INVENTORY

PARK	TYPE	TIER	ADDRESS	YEAR	ACRES	STATUS	C_DIST	ISD	PPD
Junction	NEIGHBORHOOD	Neighborhood Based	2250 PRESIDIO VISTA DR	2011	6.2040	Act	7	NWISD	5
Kellis	NEIGHBORHOOD	Neighborhood Based	4651 SOUTHRIDGE TERR	1950	16.3000	Act	9	FWISD	4
Kingsridge	NEIGHBORHOOD	Neighborhood Based	5373 CAMROSE ST	2011	19.9800	Res	7	KISD	5
Kingsridge West	NEIGHBORHOOD	Neighborhood Based	5001 GOLDEN TRIANGLE BLVD	2018	28.3990	Res	7	KISD	5
Kingswood	NEIGHBORHOOD	Neighborhood Based	7505 TRAIL LAKE DR	2000	16.7700	Act	6	FWISD	1
Krauss Baker	NEIGHBORHOOD	Neighborhood Based	3517 PARK LAKE DR	1977	18.6000	Act	6	FWISD	1
Kristi Jean Burbach	NEIGHBORHOOD	Neighborhood Based	3529 FOSSIL PARK DR	1984	14.7100	Act	4	KISD	5
Lake Como	COMMUNITY	Community Based	3401 LAKE COMO DR	1950	59.1377	Act	3 and 9	FWISD	4
Lasater	GREENBELT	Special Use & Nature Based	1500 E HARMON RD	2004	25.1330	Act	2	EMSISD	5
Lebow	NEIGHBORHOOD	Neighborhood Based	3255 SCHWARTZ AVE	2019	9.5300	Res	2	FWISD	4
Lincoln	NEIGHBORHOOD	Neighborhood Based	2922 LINCOLN AVE	1934	7.0000	Act	2	FWISD	4
Lincolnshire	NEIGHBORHOOD	Neighborhood Based	1425 HORNCastle ST	1985	15.3810	Act	8	CISD	1
Linwood-Jesse D. Sandoval (formerly Linwood)	POCKET	Neighborhood Based	301 WIMBERLY ST	1957	4.0000	Act	9	FWISD	4
Little People	POCKET	Neighborhood Based	3431 WALTON AVE	1978	2.9000	Act	6	FWISD	1
Littlejohn	URBAN	Neighborhood Based	4125 LITTLEJOHN AVE	1972	0.8300	Act	5	FWISD	4
Live Oak	NEIGHBORHOOD	Neighborhood Based	2300 SILVER CREEK RD	1918	7.8500	Res	7	FWISD	2
Log Cabin Village	SPECIAL USE	Special Use & Nature Based	1500-2000 COLONONIAL PKWY	1910	2.5000	Act	9	FWISD	4
Lost Creek Ranch	POCKET	Neighborhood Based	13861 LOST SPURS RD	2007	4.1950	Act	7	NWISD	5
Lost Spurs	NEIGHBORHOOD	Neighborhood Based	3520 ALTA VISTA RD	2000	9.9590	Act	7	NWISD	5
Louella Bales Baker	URBAN	Neighborhood Based	3101 E 1ST ST	1998	0.9560	Act	8	FWISD	4
Love Circle	NEIGHBORHOOD	Neighborhood Based	7400 JACKSBORO HWY	1918	50.0000	Act	7	FWISD	2
Maddox	URBAN	Neighborhood Based	2414 GOULD AVE	1905	0.9600	Act	2	FWISD	4
Malaga	POCKET	Neighborhood Based	7500 MALAGA DR	1918	2.0000	Act	7	FWISD	2
Mallard Cove	COMMUNITY	Community Based	375 SHADOW GRASS AVE	2003	103.9240	Act	5	FWISD	3
Marie F. Pate	NEIGHBORHOOD	Neighborhood Based	3751 SOUTH EDGEWOOD TERR	1968	5.0000	Act	5	FWISD	4
Marina	NEIGHBORHOOD	Neighborhood Based	4033 MARINA DR	1918	5.0000	Act	7	FWISD	2
Marine	COMMUNITY	Community Based	303 NW 20TH ST	1894	12.0000	Act	2	FWISD	4
Marine Creek Lake	COMMUNITY	Community Based	4700 HUFFINES BLVD	1984	69.9700	Act	2	LWISD	2
Marine Creek Linear	NEIGHBORHOOD	Neighborhood Based	3106 ANGLE AVE	1984	48.3216	Act	2	FWISD	4
Marine Creek Linear North	NEIGHBORHOOD	Neighborhood Based	3317 CHESTNUT AVE	1996	7.8300	Act	2	FWISD	4
Marine Creek Ranch	COMMUNITY	Community Based	5101 CROMWELL MARINE CREEK RD	2008	42.9570	Res	2	EMSISD	2
Marion Sansom	COMMUNITY	Community Based	2501 ROBERTS CUT-OFF RD	1933	264.0000	Act	7	FWISD	4
Martin Luther King	COMMUNITY	Community Based	5565 TRUMAN DR	1969	5.7800	Act	5	FWISD	4
Mary and Marvin Leonard	NEIGHBORHOOD	Neighborhood Based	6478 GENOA RD	1960	6.5300	Act	3	FWISD	4
McPherson	NEIGHBORHOOD	Neighborhood Based	1229 McPHERSON RD	2016	12.4414	Res	8	EISD	1
McPherson Ranch	NEIGHBORHOOD	Neighborhood Based	3950 MARTINSBURG DR	2008	7.4250	Act	7	NWISD	5
Meadow Creek	POCKET	Neighborhood Based	2436 CAROLINA DR	2008	4.5240	Act	8	CISD	1
Meadowbrook Golf Course	SPECIAL USE	Special Use & Nature Based	1815 JENSON RD	1937	138.9000	Act	4	FWISD	4

## 2020 PARK INVENTORY

PARK	TYPE	TIER	ADDRESS	YEAR	ACRES	STATUS	C_DIST	ISD	PPD
Meadowood	POCKET	Neighborhood Based	2800 MEADOWBROOK DR	1935	1.7500	Act	8	FWISD	4
Meadows West	NEIGHBORHOOD	Neighborhood Based	6400 BELLAIRE DR SOUTH	1984	17.2400	Act	3	FWISD	1
Mesa Verde	URBAN	Neighborhood Based	7220 MESA VERDE TRL	1993	0.3000	Act	4	KISD	5
Monticello	POCKET	Neighborhood Based	3505 DOROTHY LN NORTH	1928	4.2400	Act	7	FWISD	4
Morningside Middle School	POCKET	Neighborhood Based	2751 MISSISSIPPI AVE	1985	3.7250	Act	8	FWISD	4
Morris Berney	POCKET	Neighborhood Based	6312 ROSEMONT AVE	1926	4.5000	Act	3	FWISD	4
Mosier Valley	NEIGHBORHOOD	Neighborhood Based	11220 MOSIER VALLEY RD	2015	5.0915	Act	5	HEBISD	3
Mosque Point	COMMUNITY	Community Based	8375 CAHOBA DR	1918	80.0000	Act	7	FWISD	2
Newby	POCKET	Neighborhood Based	1105 JEROME ST	1951	2.7500	Act	9	FWISD	4
Ninnie Baird	NEIGHBORHOOD	Neighborhood Based	8900 HAWLEY DR	2009	15.5270	Act	4	KISD	5
Normandy Place	POCKET	Neighborhood Based	3421 PANOLA AVE	1949	1.5000	Act	8	FWISD	4
North	COMMUNITY	Community Based	9000 NORTH BEACH ST	1999	61.5160	Act	4	KISD	5
North Z. Boaz	COMMUNITY	Community Based	3200 LACKLAND RD	1928	138.3000	Act	3	FWISD	4
Northside	COMMUNITY	Community Based	1100 NW 18TH ST	1946	15.0000	Act	2	FWISD	4
Northwest Community	COMMUNITY	Community Based	8575 BLUE MOUND RD	2011	245.7690	Act	7	EMSISD	5
Oak Grove	COMMUNITY	Community Based	1749 OAK GROVE SHELBY RD	2015	67.3900	Res	8	EISD	1
Oakhurst	URBAN	Neighborhood Based	2400 DAISY LN	1944	0.7500	Act	9	FWISD	4
Oakland Lake	COMMUNITY	Community Based	1645 LAKE SHORE DR	1927	69.0000	Act	8	FWISD	4
Oakmont	COMMUNITY	Community Based	7000 BELLAIRE DR SOUTH	1981	127.1700	Act	3	FWISD	1
Oakmont Linear	GREENBELT	Special Use & Nature Based	7785 BELLAIRE DR SOUTH	1979	34.8800	Act	3 and 6	CISD	1
Overton	COMMUNITY	Community Based	3500 OVERTON PARK DR EAST	1959	48.6800	Act	3	FWISD	4
Paddock	URBAN	Neighborhood Based	100 WEST BELKNAP ST	1917	0.8000	Act	9	FWISD	4
Park Place	NEIGHBORHOOD	Neighborhood Based	7812 PARK TRAILS DR	1995	5.8000	Act	4	KISD	5
Parks of Deer Creek	NEIGHBORHOOD	Neighborhood Based	10200 DEER TRL	2008	8.2167	Act	6	CISD	1
Parkwood East	URBAN	Neighborhood Based	7704 XAVIER DR	1985	0.1800	Res	6	FWISD	1
Parkwood Hills	NEIGHBORHOOD	Neighborhood Based	7800 PARKWOOD HILL BLVD	1998	8.6370	Act	4	KISD	5
Parque Unidad/Unity Park (Formerly Jefferson Davis)	NEIGHBORHOOD	Neighborhood Based	4001 TOWNSEND/2000 W. BOLT ST.	1923	8.5770	Act	9	FWISD	4
Patricia LeBlanc	NEIGHBORHOOD	Neighborhood Based	6300 GRANBURY CUT-OFF	1986	15.0000	Act	6	CISD	1
Paz Hernandez	URBAN	Neighborhood Based	3515 ELLIS AVE	1977	0.4140	Act	2	FWISD	4
Pecan Valley	COMMUNITY	Community Based	6400 PECAN VALLEY DR	1962	190.1420	Act	3	FWISD	1
Pecan Valley Golf Course	SPECIAL USE	Special Use & Nature Based	6400 PECAN VALLEY DR	1962	461.7680	Act	3	FWISD	1
Peter Smith	URBAN	Neighborhood Based	901 JENNINGS AVE	1903	0.1000	Act	9	FWISD	4
Plover Circle	POCKET	Neighborhood Based	7251 CAHOBA DR	1918	4.0000	Act	7	FWISD	4
Ponderosa	NEIGHBORHOOD	Neighborhood Based	11725 PONDEROSA PINE DR	2018	15.2410	Act	7	KISD	5
Post Oak Village	NEIGHBORHOOD	Neighborhood Based	3830 POST OAK BLVD	1981	6.0000	Act	5	HEBISD	3
Prairie Dog	COMMUNITY	Community Based	5060 PARKER HENDERSON RD	1970	39.5600	Act	5	FWISD	4
Quail Ridge	NEIGHBORHOOD	Neighborhood Based	7451 DUTCH BRANCH RD	1986	7.3300	Act	6	CISD	1
Quanah Parker	COMMUNITY	Community Based	5401 RANDOL MILL RD	1997	68.0000	Act	4	FWISD	4

## 2020 PARK INVENTORY

PARK	TYPE	TIER	ADDRESS	YEAR	ACRES	STATUS	C_DIST	ISD	PPD
Ranches East	NEIGHBORHOOD	Neighborhood Based	3801 LAZY RIVER RANCH RD	2007	18.5240	Act	7	NWISD	5
Reata	NEIGHBORHOOD	Neighborhood Based	9489 SILLS WAY	2010	8.1160	Act	7	NWISD	5
Remington Pointe	NEIGHBORHOOD	Neighborhood Based	6050 WESTERN PASS	1999	10.5640	Act	2	EMSISD	2
Ridgeview Farms	NEIGHBORHOOD	Neighborhood Based	8628 PRAIRIE DAWN DR	2007	7.3190	Act	2	EMSISD	5
Ridglea Hills	NEIGHBORHOOD	Neighborhood Based	4589 STONEDALE RD	1983	6.1000	Act	3	FWISD	4
River Park	NEIGHBORHOOD	Neighborhood Based	3100 BRYANT IRVIN RD	1984	11.6300	Act	3	FWISD	4
River Trails III	POCKET	Neighborhood Based	8570 SAN JOAQUIN TRL	1998	4.4560	Act	5	HEBISD	3
Riverside	COMMUNITY	Community Based	501 OAKHURST SCENIC DR	1974	30.8000	Act	9	FWISD	4
Rockwood	COMMUNITY	Community Based	701 NORTH UNIVERSITY DR	1927	50.4637	Act	2	FWISD, CSTLBRY	4
Rockwood Golf Course	SPECIAL USE	Special Use & Nature Based	701 NORTH UNIVERSITY DR	1927	229.4870	Act	2	FWISD, CSTLBRY	4
Rodeo	NEIGHBORHOOD	Neighborhood Based	2605 NORTH HOUSTON ST	1971	5.4606	Act	2	FWISD	4
Rolling Hills	SPECIAL USE	Special Use & Nature Based	2525 JOE B. RUSHING RD	1971	207.2930	Act	8	FWISD	4
Rosedale Plaza	NEIGHBORHOOD	Neighborhood Based	5200 EAST ROSEDALE ST	1969	6.2500	Act	5	FWISD	4
Rosemary Ridge	NEIGHBORHOOD	Neighborhood Based	4350 RED CLOVER LN	2010	6.2500	Act	6	CISD	1
Rosemont	COMMUNITY	Community Based	1400 WEST SEMINARY DR	1927	30.4000	Act	9	FWISD	4
Rosen	NEIGHBORHOOD	Neighborhood Based	2200 MCCANDLESS ST	1971	8.8035	Act	2	FWISD	4
Rosenthal	POCKET	Neighborhood Based	5200 HASTINGS DR	1979	1.5300	Act	6	FWISD	1
Ryan Place Triangle	URBAN	Neighborhood Based	3001 FIFTH AVE	1974	0.2700	Act	9	FWISD	4
Sagamore Hills	POCKET	Neighborhood Based	4719 HAMPSHIRE BLVD	1968	4.1500	Act	5	FWISD	4
Sandy Lane	NEIGHBORHOOD	Neighborhood Based	2001 SANDY LN	1967	28.7000	Act	5	FWISD	3
Sandybrook	POCKET	Neighborhood Based	7049 GREENVIEW CIRCLE NORTH	1984	2.9200	Act	5	FWISD	3
Saratoga	NEIGHBORHOOD	Neighborhood Based	12633 SARATOGA SPRINGS CIR	2014	21.1150	Act	7	KISD	5
Saunders	GREENBELT	Special Use & Nature Based	2401 MULE ALLEY	1977	0.4800	Act	2	FWISD	4
Seminary Hills	NEIGHBORHOOD	Neighborhood Based	5101 TOWNSEND DR	1968	6.1800	Act	9	FWISD	4
Sendera Ranch	NEIGHBORHOOD	Neighborhood Based	14151 SENDERA RANCH BLVD	2017	33.9580	Act	7	NWISD	5
Settlement Plaza	NEIGHBORHOOD	Neighborhood Based	9745 FRANCESCA DR	2000	10.4000	Act	3	WSISD	2
Shackleford	NEIGHBORHOOD	Neighborhood Based	4615 SHACKLEFORD ST	1984	11.9740	Act	8	FWISD	4
Silver Sage	NEIGHBORHOOD	Neighborhood Based	7017 SILVER SAGE DR	1982	10.4600	Act	4	KISD	5
Sinclair	NEIGHBORHOOD	Neighborhood Based	9899 SINCLAIR ST	2009	16.4830	Act	7	KISD	5
Smith-Wilemon	POCKET	Neighborhood Based	925 WILLOW RIDGE RD	1998	3.2270	Act	4	FWISD	4
South Meadows	POCKET	Neighborhood Based	2300 KELTON ST	1998	3.5900	Act	8	CISD	1
Southcreek	NEIGHBORHOOD	Neighborhood Based	6746 WESTCREEK DR	1983	6.3000	Act	6	FWISD	1
Southridge	CONSERVANCY	Special Use & Nature Based	3601 BILOXI DR	1988	2.0460	Res	6	FWISD	1
Southside Community Center Park	COMMUNITY	Community Based	959 EAST ROSEDALE ST	1993	2.0000	Act	8	FWISD	4
Southwest	COMMUNITY	Community Based	4320 ALTAMESA BLVD	1969	1.8000	Act	6	FWISD	1
Springdale	POCKET	Neighborhood Based	2301 DAVID DR	1958	4.0000	Act	4	FWISD	4
Stephens	NEIGHBORHOOD	Neighborhood Based	2701 WEST GAMBRELL ST	1984	4.0000	Act	9	FWISD	4
Stonecreek	NEIGHBORHOOD	Neighborhood Based	12801 SWEET BAY DR	2002	10.2050	Act	5	HEBISD	3

## 2020 PARK INVENTORY

PARK	TYPE	TIER	ADDRESS	YEAR	ACRES	STATUS	C_DIST	ISD	PPD
Stratford	NEIGHBORHOOD	Neighborhood Based	4057 MEADOWBROOK DR	1924	15.0000	Act	8	FWISD	4
Stratford Nature Area	CONSERVANCY	Special Use & Nature Based	3520 EAST FRWY	1924	35.0000	Act	8	FWISD	4
Summer Creek Ranch	NEIGHBORHOOD	Neighborhood Based	8501 BENTWATER LN	2000	6.2270	Act	6	CISD	1
Summerbrook	NEIGHBORHOOD	Neighborhood Based	4315 HUCKLEBERRY DR	1985	27.2700	Act	4	KISD	5
Summerfields	NEIGHBORHOOD	Neighborhood Based	6720 SPOONWOOD LN	1978	9.4000	Act	4	KISD	5
Summerfields Chisholm	POCKET	Neighborhood Based	3970 MALIBU SUN DR	1995	4.5400	Act	4	KISD	5
Summerfields Northwest	POCKET	Neighborhood Based	7755 BUTTONWOOD DR	1985	4.9900	Act	4	KISD	5
Sundance Springs	NEIGHBORHOOD	Neighborhood Based	7791 HAWKWOOD TR	2008	5.3850	Act	8	CISD	1
Sunset	NEIGHBORHOOD	Neighborhood Based	8855 WATERCRESS DR	1918	10.0000	Act	7	FWISD	2
Sunset Hills	NEIGHBORHOOD	Neighborhood Based	7017 ELLIS RD	1960	7.5400	Act	4	FWISD	3
Sunset Hills North	NEIGHBORHOOD	Neighborhood Based	3600 SUNSET HILLS DR	2004	6.7300	Act	4	KISD	5
Sycamore	COMMUNITY	Community Based	2525 EAST ROSEDALE ST	1909	88.0170	Act	8	FWISD	4
Sycamore Creek Golf Course	SPECIAL USE	Special Use & Nature Based	401 MARTIN LUTHER KING FRWY	1977	66.2200	Act	8	FWISD	4
Sylvania	COMMUNITY	Community Based	3700 EAST BELKNAP ST	1926	29.2200	Act	4	FWISD	4
Tadlock	POCKET	Neighborhood Based	4665 EASTLINE DR	1959	4.5000	Act	8	FWISD	4
Tandy Hills	NEIGHBORHOOD	Neighborhood Based	3325 VIEW ST	1960	15.0000	Act	8	FWISD	4
Tandy Hills Nature Area	CONSERVANCY	Special Use & Nature Based	3325 VIEW ST	1960	90.2500	Act	8	FWISD	4
Tehama Ridge	POCKET	Neighborhood Based	2137 RAVENS NEST DR	2011	3.1810	Act	7	NWISD	5
Tehama Trails	GREENBELT	Special Use & Nature Based	9906 BUTTE MEADOWS DR	2011	22.8410	Act	7	NWISD	5
Terry	URBAN	Neighborhood Based	3104 NORTH TERRY ST	1970	0.4300	Act	2	FWISD	4
Thomas Place	COMMUNITY	Community Based	4201 LAFAYETTE AVE	1970	2.7600	Act	7	FWISD	4
Thorny Ridge	POCKET	Neighborhood Based	9036 NORTH NORMAN DALE ST	1982	3.7600	Act	3	FWISD	4
Tim Watson	NEIGHBORHOOD	Neighborhood Based	8851 S. NORMAN DALE ST	2016	7.9100	Res	3	FWISD	4
Timberland	POCKET	Neighborhood Based	4400 KELLER HASLET RD	2018	2.7010	Res	7	KISD	5
Titus Paulsel	NEIGHBORHOOD	Neighborhood Based	2000 BRINKLEY ST	1994	10.0000	Act	5	FWISD	4
Traders Oak	POCKET	Neighborhood Based	1206 SAMUELS AVE	1953	3.2770	Act	9	FWISD	4
Trail Drivers	COMMUNITY	Community Based	1700 NE 28TH ST	1928	39.6100	Act	2	FWISD	4
Trail Lake Estates	POCKET	Neighborhood Based	7160 TRAIL LAKE DR	2001	4.5750	Res	6	FWISD	1
Trails of Fossil Creek	NEIGHBORHOOD	Neighborhood Based	10451 FOSSIL HOLLOW DR	2011	10.2570	Act	7	NWISD	5
Trinity	COMMUNITY	Community Based	2401 UNIVERSITY DR	1892	252.0000	Act	9	FWISD	4
Trinity Bluff	CONSERVANCY	Special Use & Nature Based	557 SAMUELS AVE	2009	1.8390	Res	9	FWISD	4
Twin Mills	NEIGHBORHOOD	Neighborhood Based	5100-5101 WILD OATS DR	2006	10.9260	Act	7	EMSISD	2
Veterans Memorial	SPECIAL USE	Special Use & Nature Based	4120 CAMP BOWIE BLVD	1923	0.5100	Act	7	FWISD	4
Victory Forest: South Central Community Center	COMMUNITY	Community Based	1000 W BIDDISON ST	2010	11.0692	Act	9	FWISD	4
Village Creek	NEIGHBORHOOD	Neighborhood Based	4750 WILBARGER ST	1959	24.3100	Act	5	FWISD	4
Vinca Circle	NEIGHBORHOOD	Neighborhood Based	7800 MALAGA DR	1918	5.1880	Act	7	FWISD	2
Vinyards at Heritage	GREENBELT	Special Use & Nature Based	5280 ALTA LOMA DR	2001	44.1470	Res	4	KISD	5
Vista West	NEIGHBORHOOD	Neighborhood Based	10510 VISTA HEIGHTS BLVD	2007	5.0300	Act	3	WSISD	2





# **City of Fort Worth Park & Recreation Needs Assessment Study**



# City of Fort Worth Park & Recreation Needs Assessment Study

Conducted by:  
National Service Research  
February 26, 2020



## Study Objectives

- Demographic profile of respondents
- Use of programs and facilities
- Perceived maintenance and safety of parks/facilities
- Priorities for future spending
- Identify park/facility priorities

- **20,000 postcards** (in English/Spanish) were mailed to randomly selected households within all five Park Planning Districts (PPD) that directed households to the online survey.
- **Online survey** (available in English/Spanish) was open October 21, 2019 through December 8, 2019, and was available on the **City's website, Facebook page and other social media.**
- **2,000 paper surveys**, with business reply self mailers, in English and Spanish, were distributed to all Community Centers in Fort Worth.
- To enhance ethnic sampling, NSR also implemented an **online panel survey** of Fort Worth residents.
- A total of **1,951 respondents** participated in the online survey. The margin of error at a 95% confidence level is plus or minus 2.2%

# Park Planning Districts

PPD	2017 Estimated Population	% of Population	% Response*
1	149,748	18%	20%
2	70,360	8	11
3	69,380	8	12
4	377,490	45	40
5	181,095	21	17
<b>TOTAL</b>	<b>848,071</b>	<b>100%</b>	<b>100%</b>

*2017 Population Estimates Source: U.S. Census, American Community Survey – 5 year Estimates.*

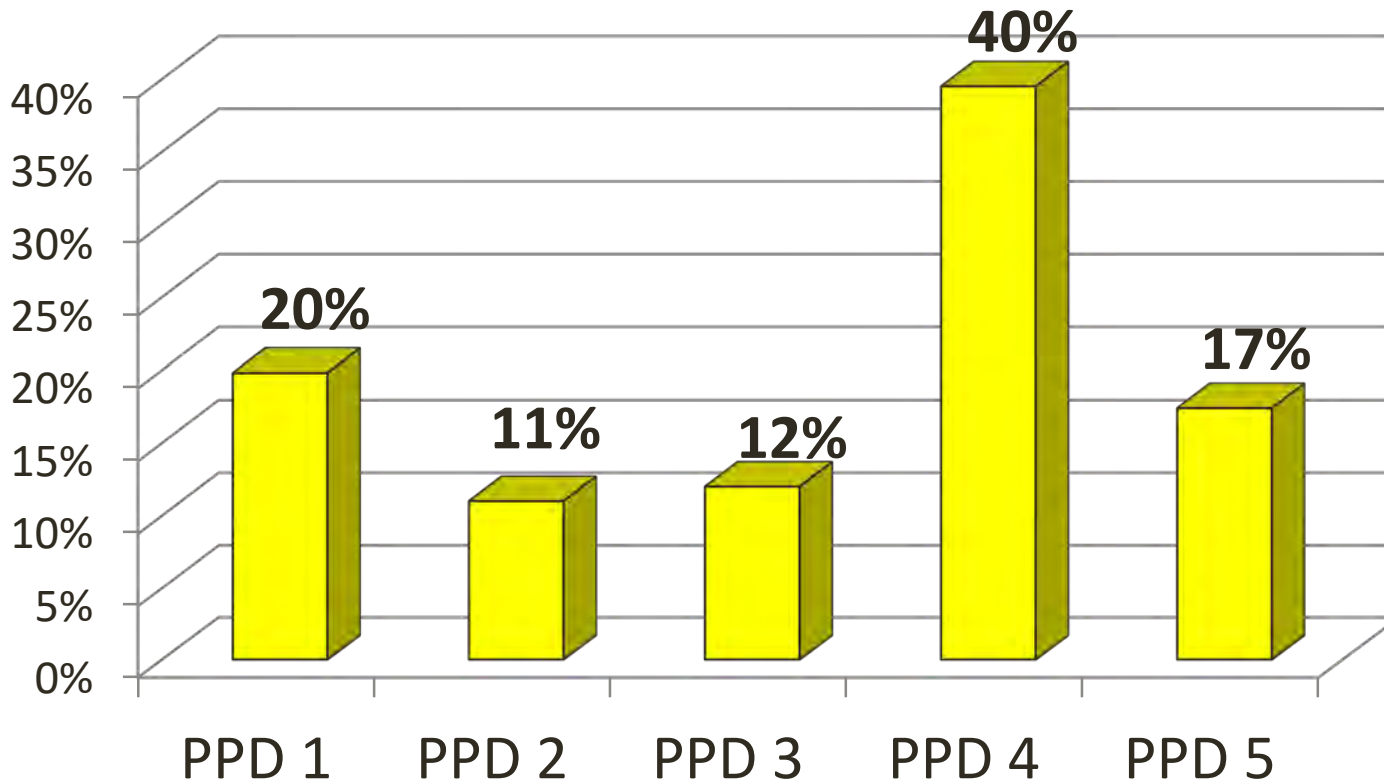
# Demographics Characteristics



# Demographics

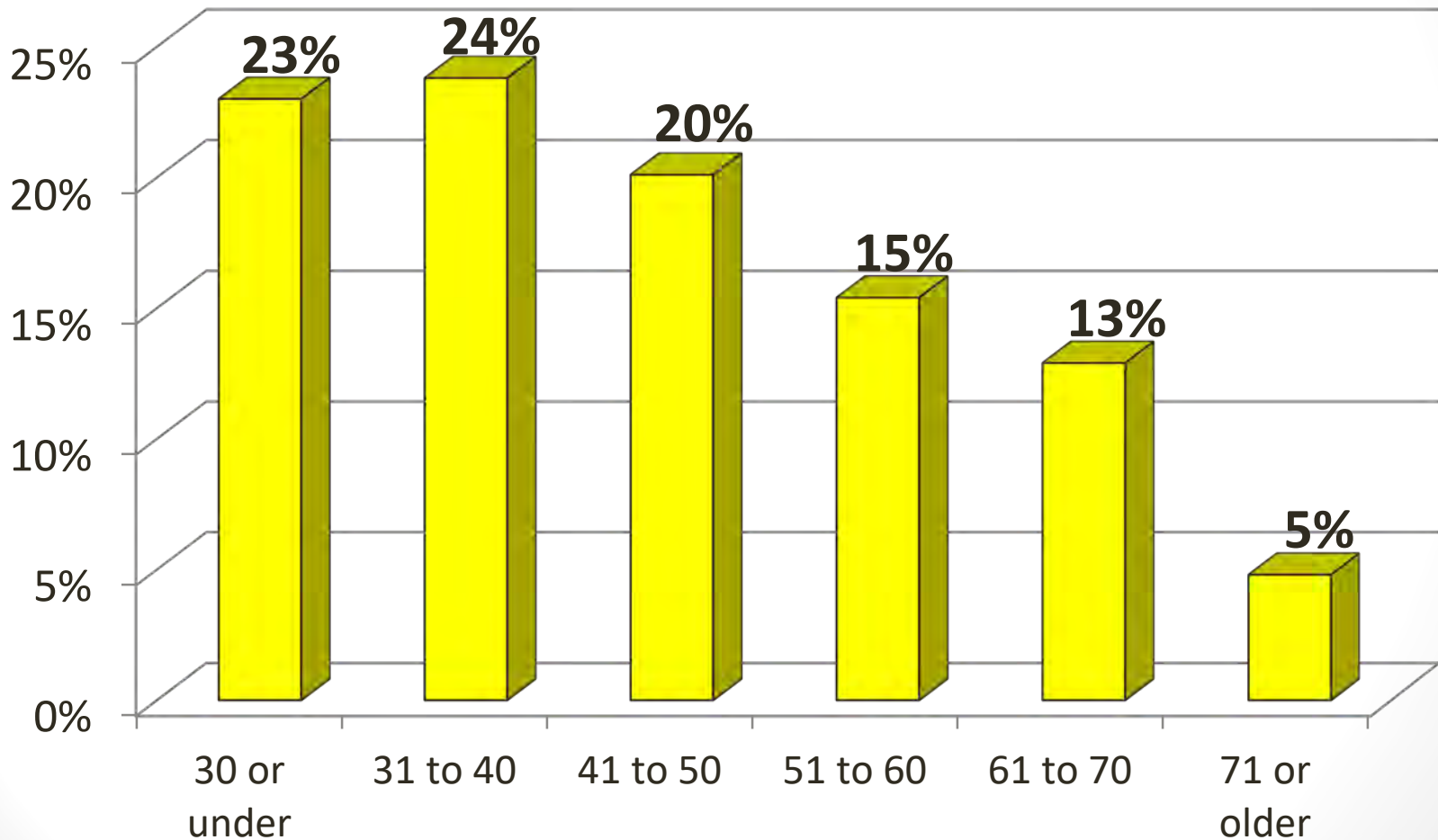
## Area of Residence by PPD

Q. In which geographic area of Fort Worth do you reside? N = 1,275



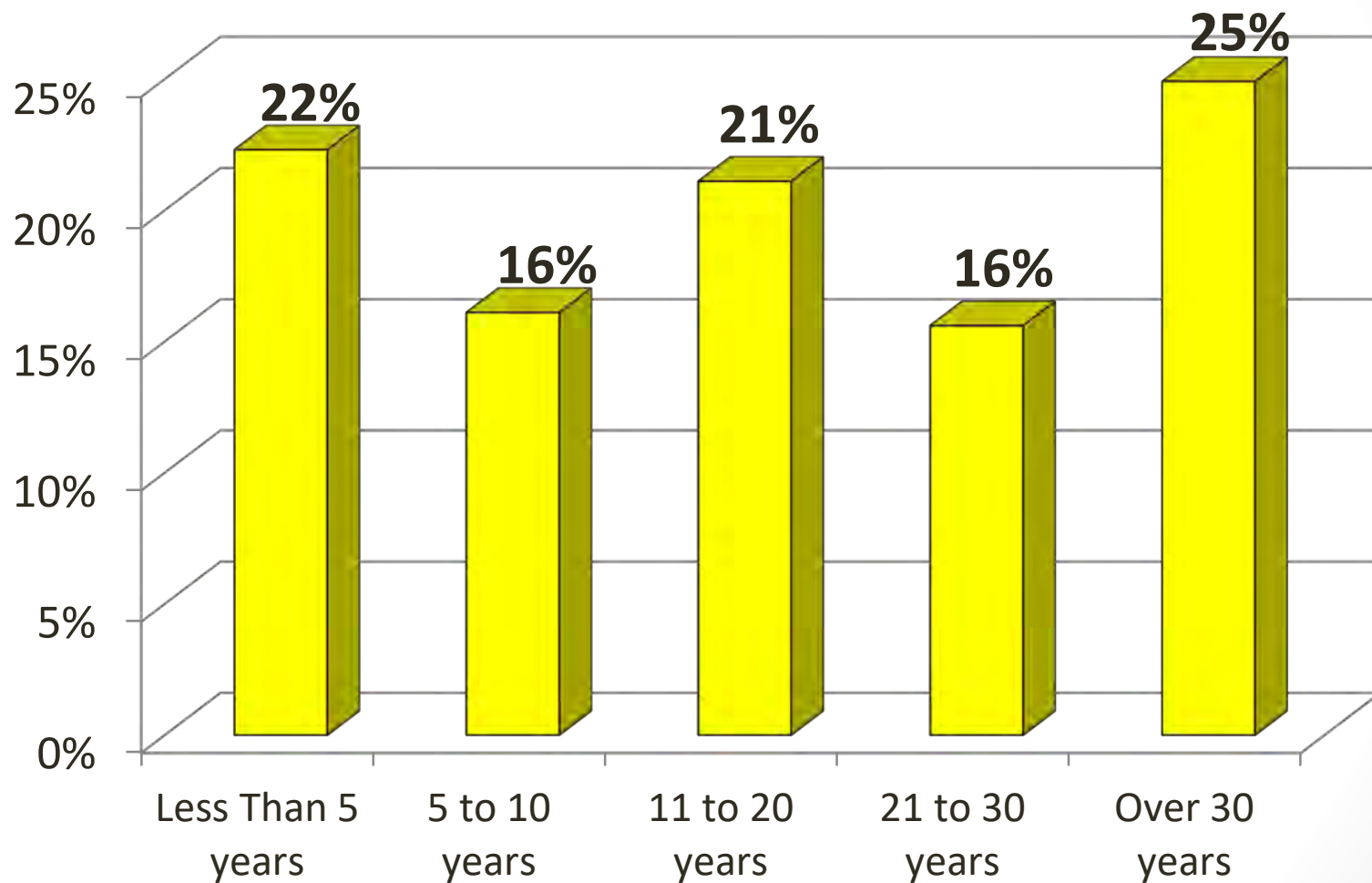
## Demographics

Q. Your age? (Represents head of household age)? N = 1,145



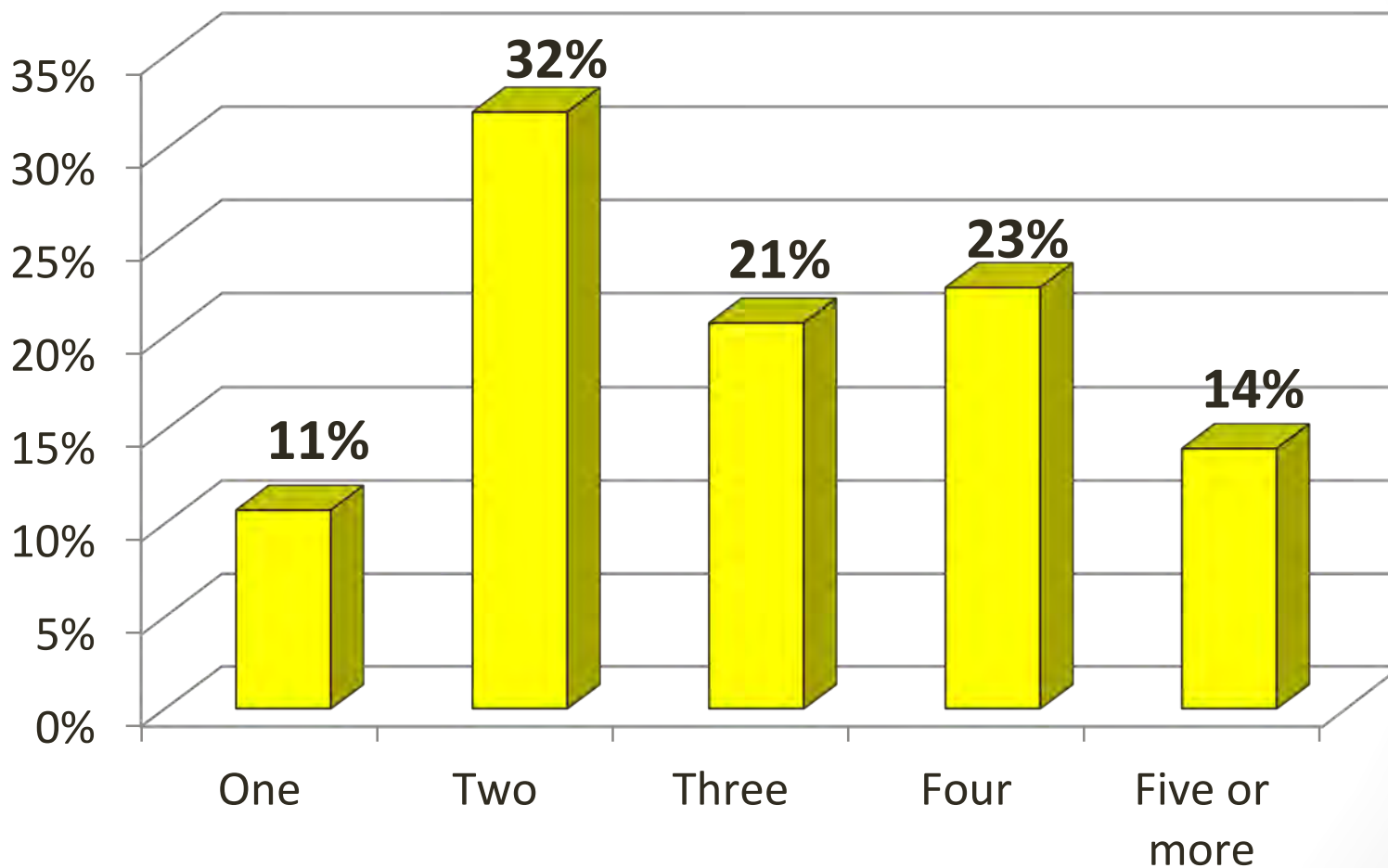
## Demographics

Q. How long have you lived in the City of Fort Worth? N = 1,142



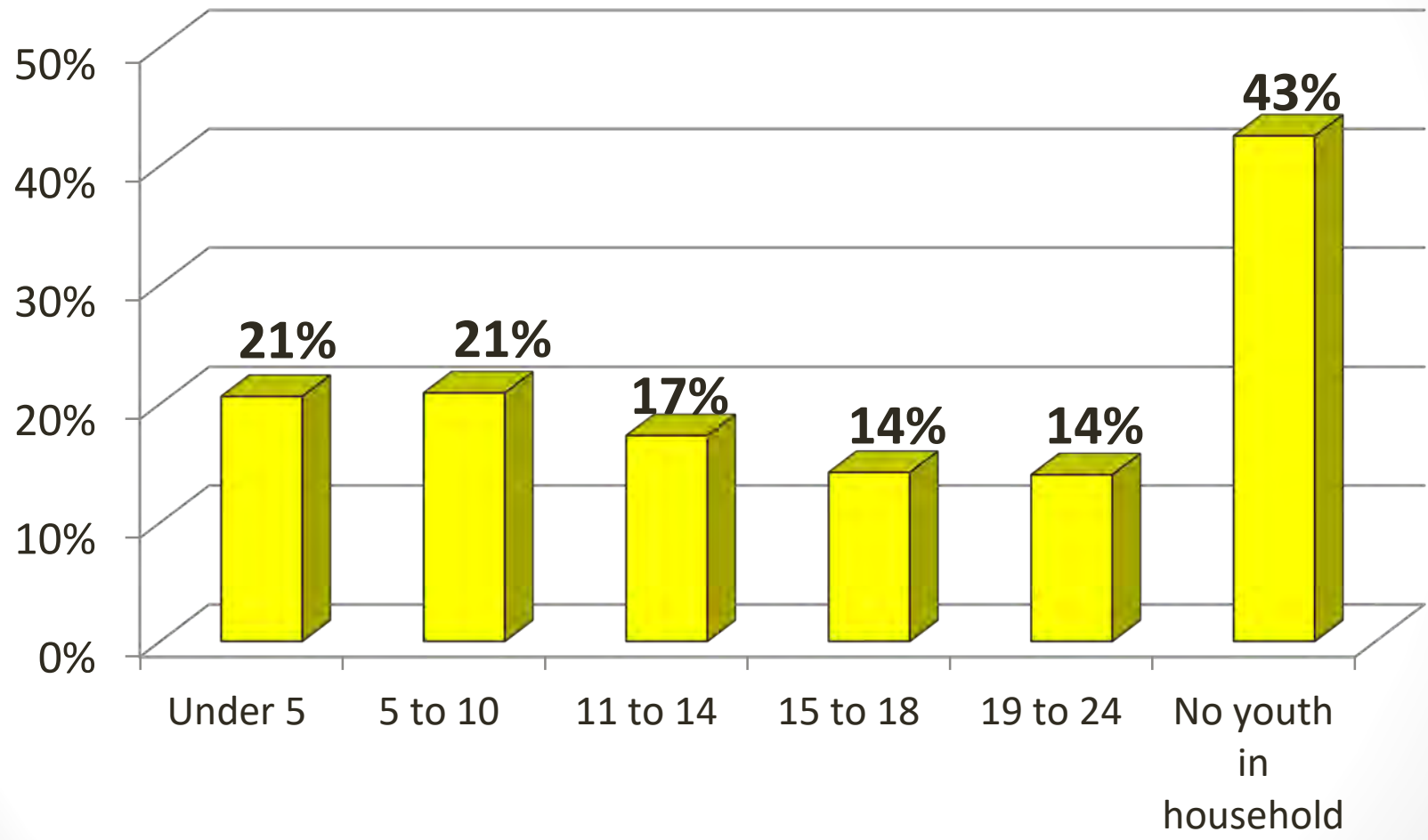
## Demographics

Q. How many persons, including yourself, currently reside within your household? N = 1,145



# Demographics

Q. Which youth age groups are represented in your household? N = 1,146

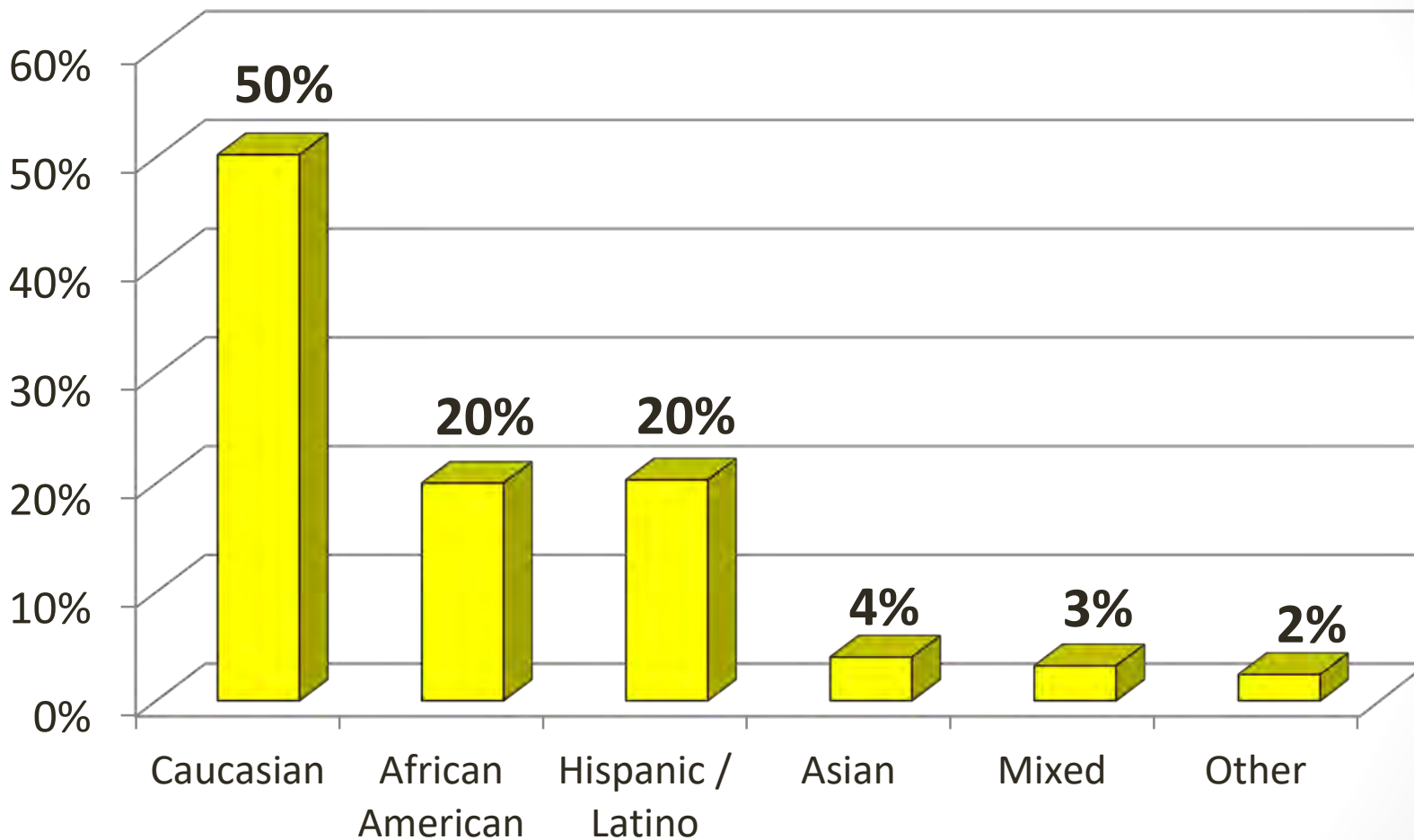


*Responses will add to more than 100% due to multiple answers allowed*



# Demographics

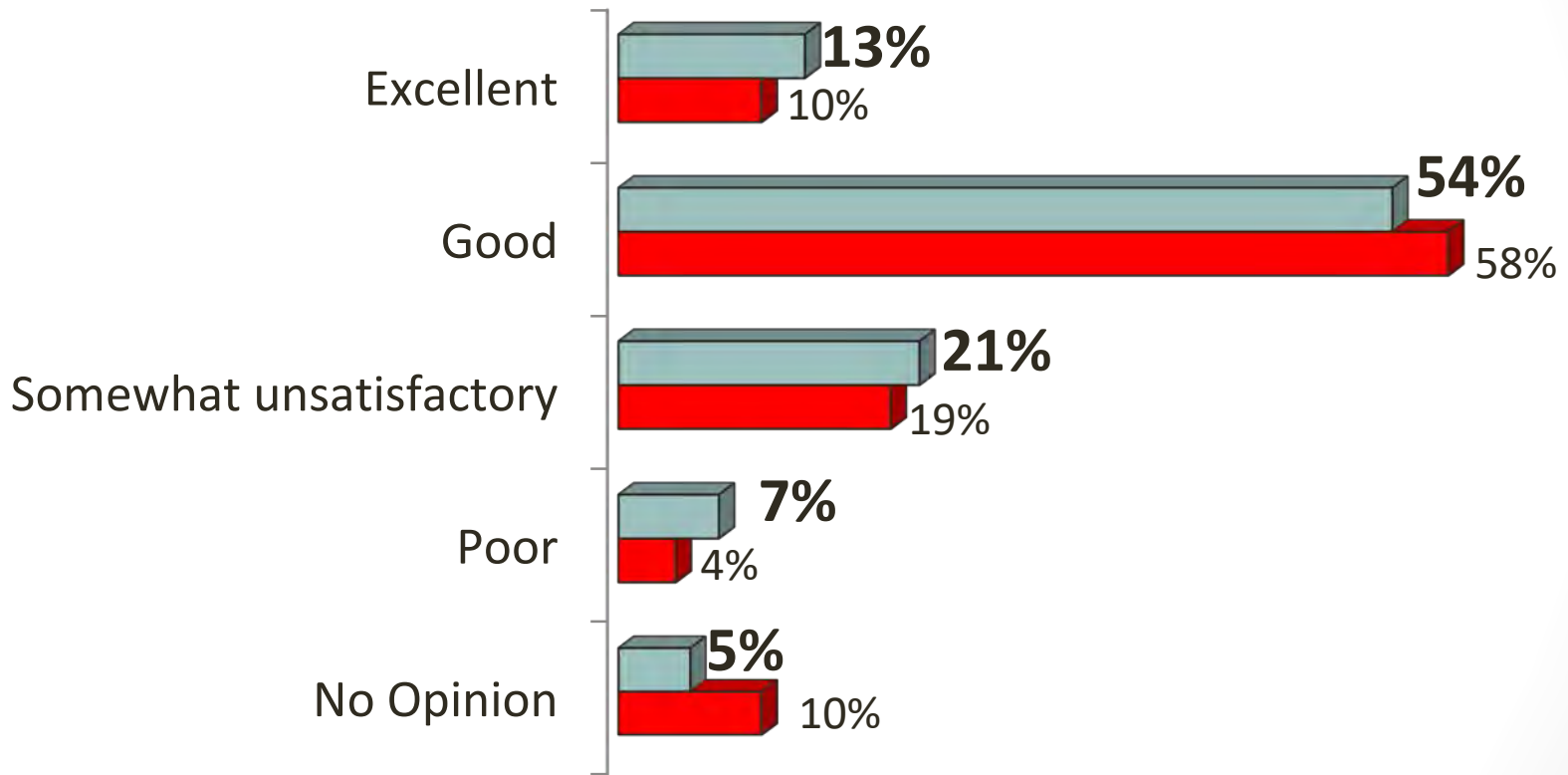
Q. Your race/ethnicity: N = 1,263



# Summary of Findings

# Rating of Parks and Recreational Opportunities

**Q. Overall, how would you rate the park and recreational opportunities in the City of Fort Worth?**



■ 2019 All Respondents N=1,953

■ 2013 All Respondents N=803

**Rating of Parks and Recreational Opportunities by PPD**  
**Q. Overall, how would you rate the park and recreational opportunities in the City of Fort Worth? N=1,953**

All Respondents	Park Planning District (PPD)					
	Total	PPD 1	PPD 2	PPD 3	PPD 4	PPD 5
<b>RATING</b>						
Excellent	13%	16%	17%	22%	15%	2%
Good	54	59	54	49	55	45
Somewhat unsatisfactory	21	18	20	15	19	26
Poor	7	4	5	8	7	11
No opinion	5	3	4	6	4	6

## Rating of Maintenance and Upkeep

**Q. How would you rate the maintenance and upkeep of Fort Worth parks and recreation facilities?**

**Q. If more maintenance is needed, specify your concerns.**

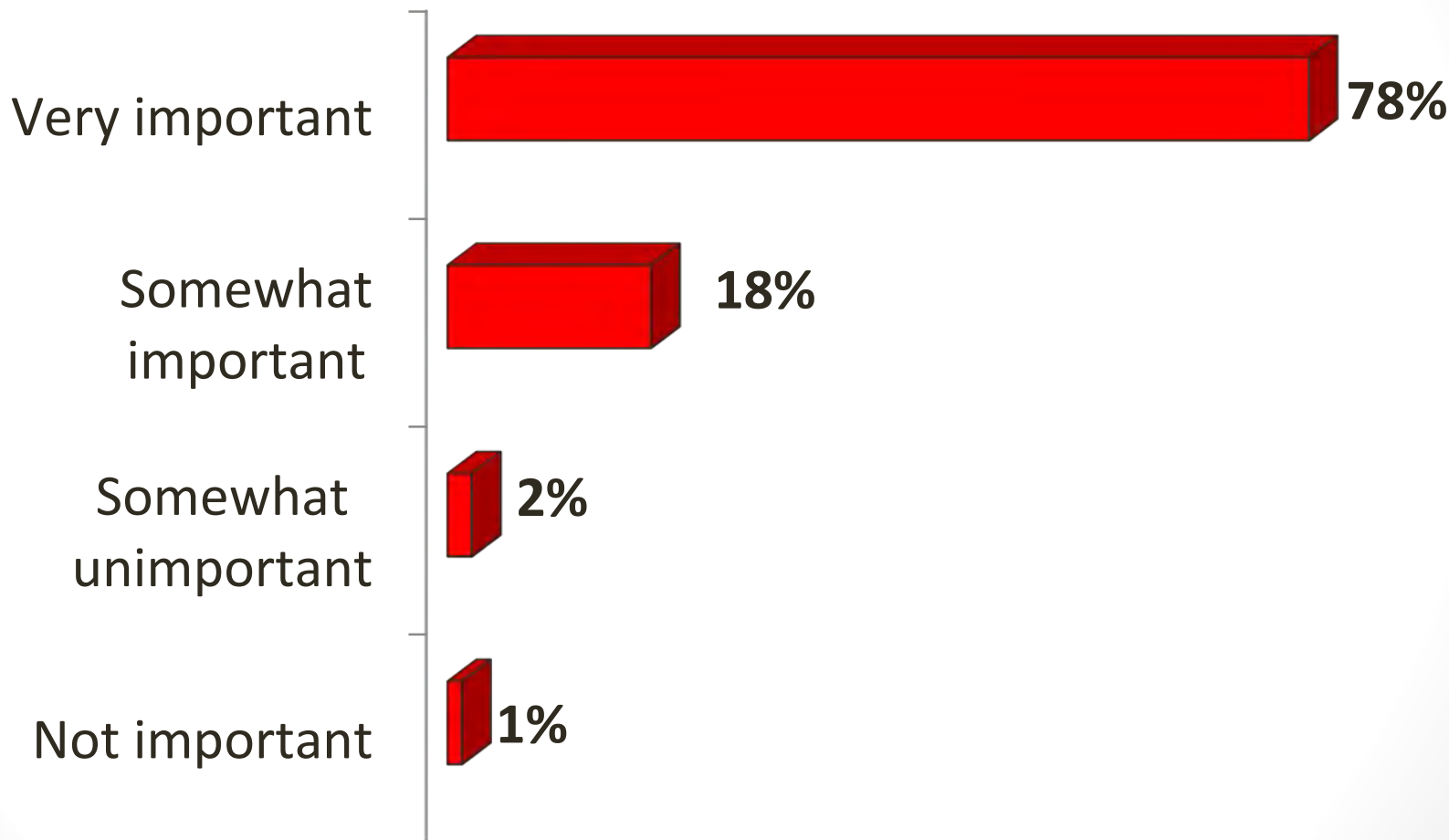
Facility	Maintenance is Adequate	More Maintenance is Needed	Less maintenance is needed
Special Use Facilities (i.e., Botanic Gardens, Log Cabin Village, the Nature Center, etc.)	66%	27%	7%
Municipal Golf Courses	61	28	11
Trails	59	36	5
Parks	54	42	4
Athletic Facilities	52	41	7
Community Centers	52	40	8

*Ratings above exclude Don't Use / Not Aware Responses*



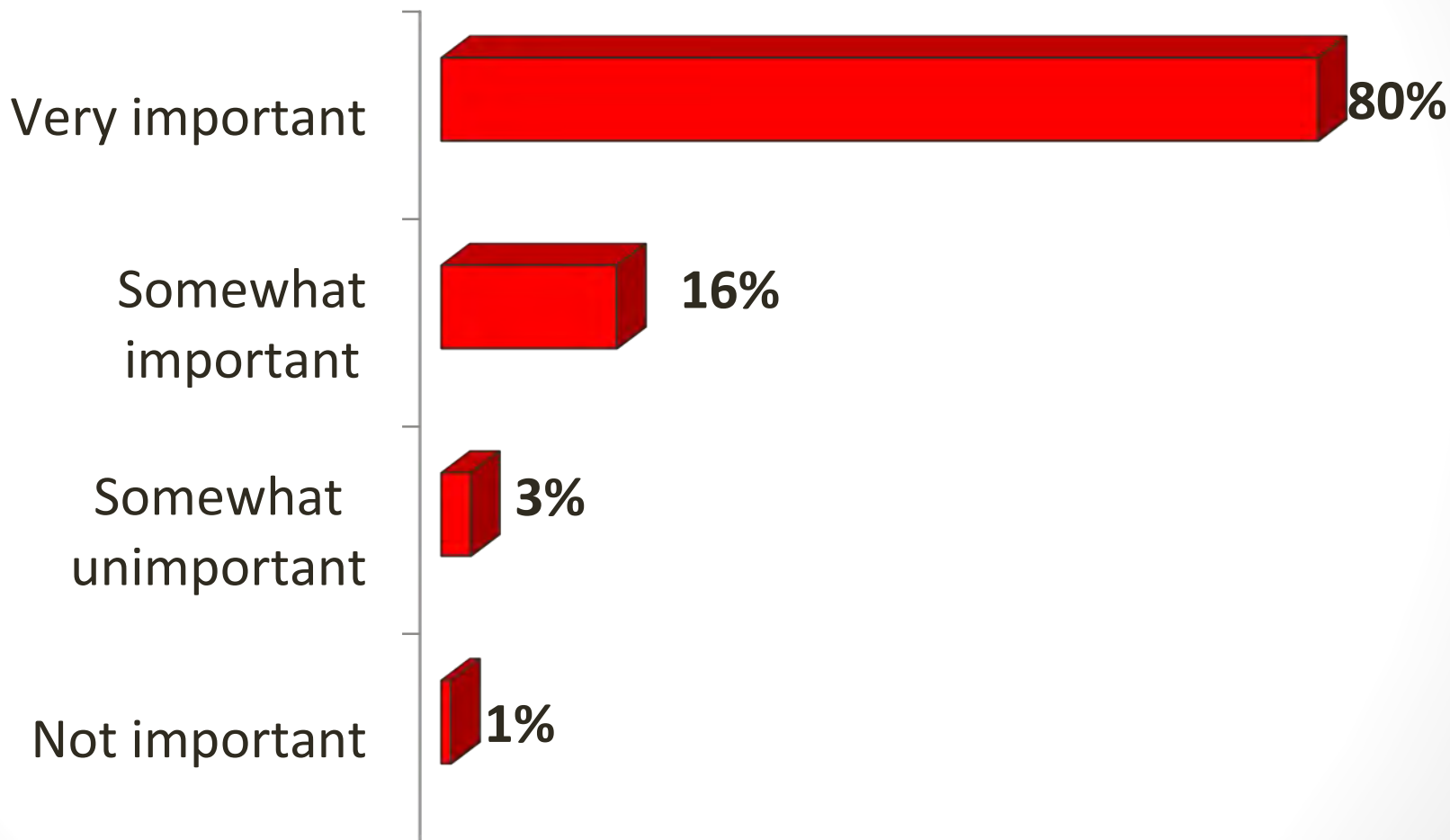
## Quality Parks, Facilities and Programs

**Q. How important do you think quality parks, facilities, and programs are to the overall pursuit of a healthy and active lifestyle for you and your household members? N = 1,562**



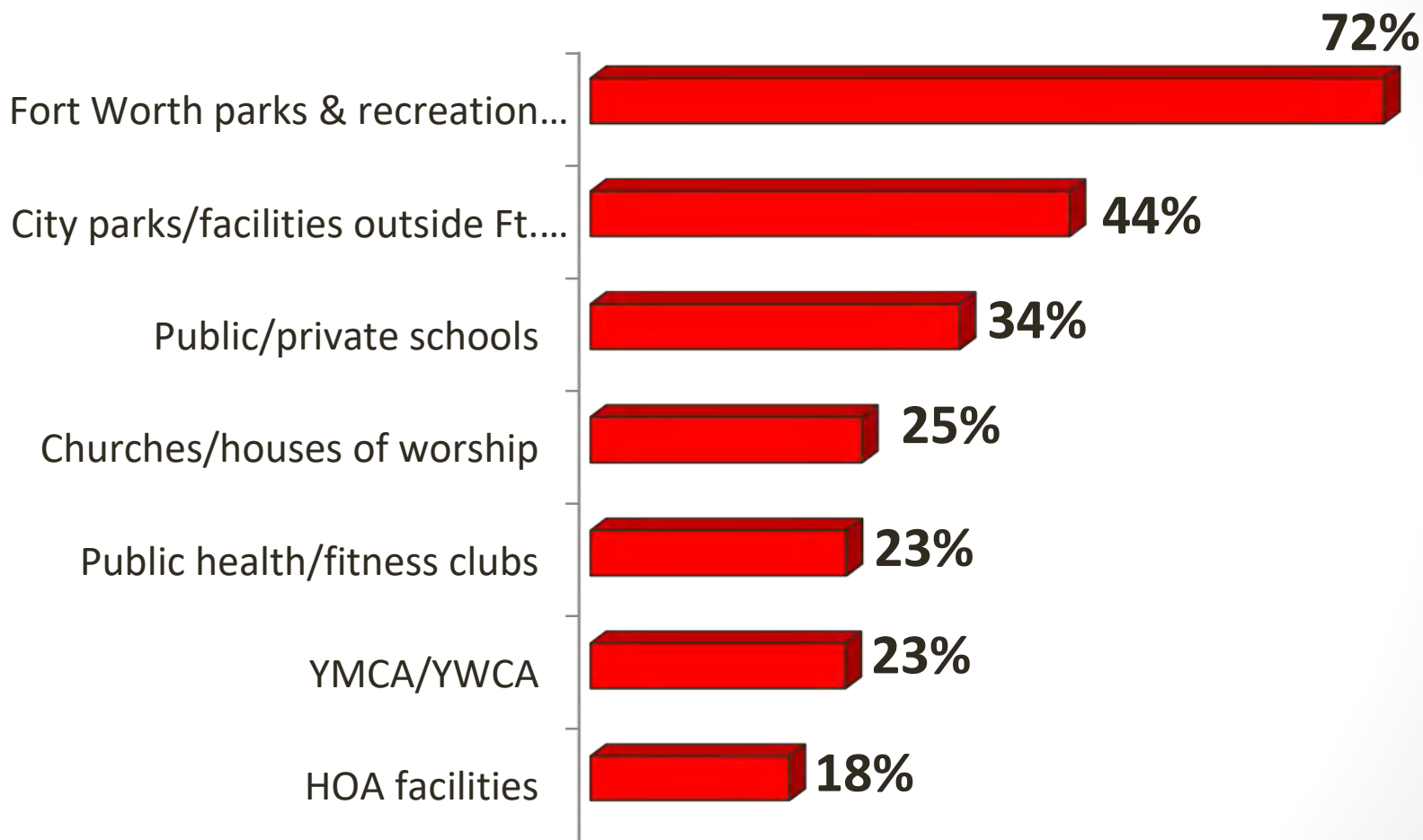
## Quality Parks, Facilities and Programs

**Q. How important do you think quality parks, facilities, and programs are to the overall quality of life in Fort Worth? N=1,562**



## Indoor/Outdoor Recreation

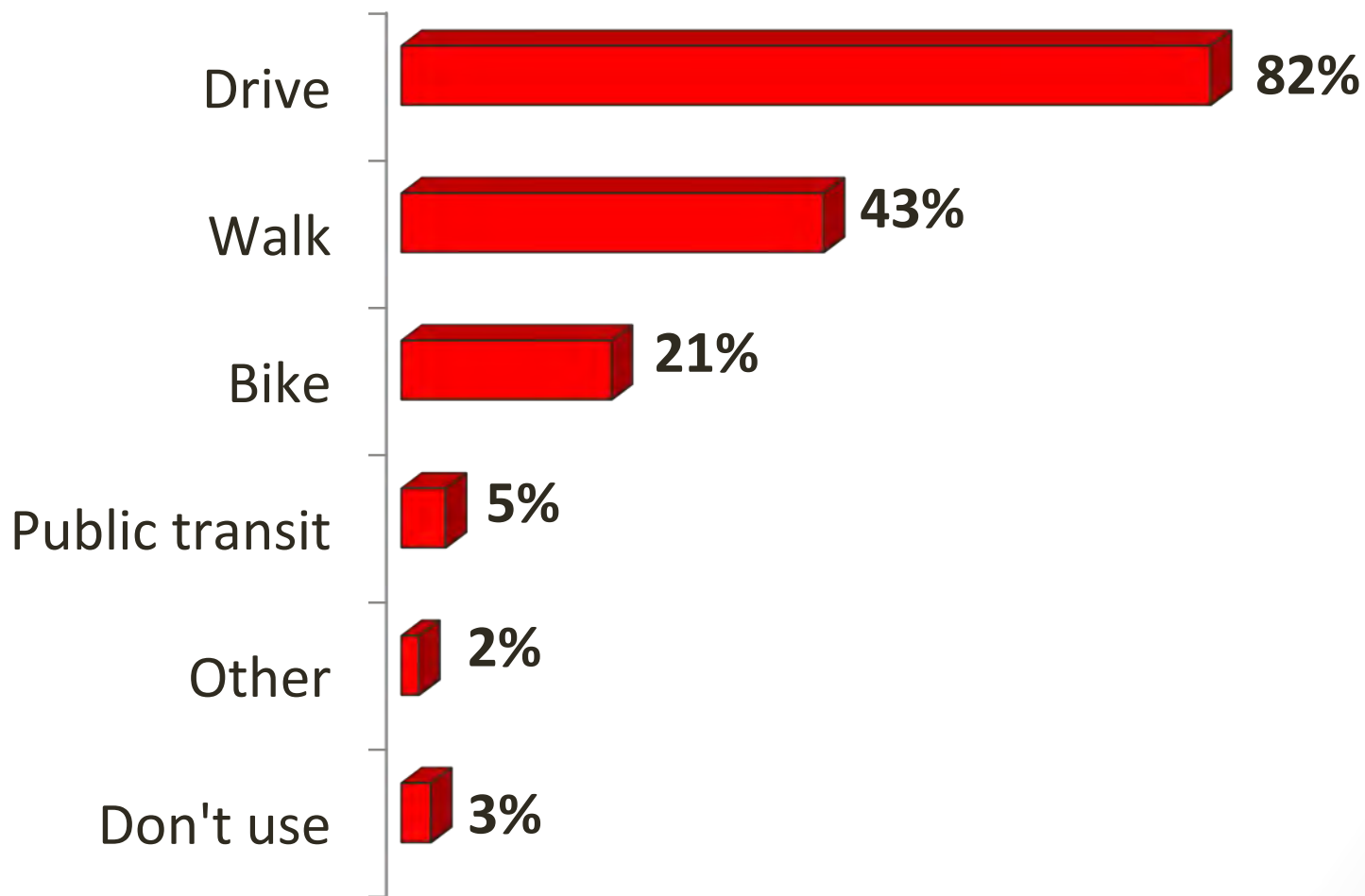
**Q. Which of the following do you and members of your household use for indoor and/or outdoor recreation? N = 1,562**



*Responses will add to more than 100% due to multiple answers allowed*

## Travel Mode to Parks

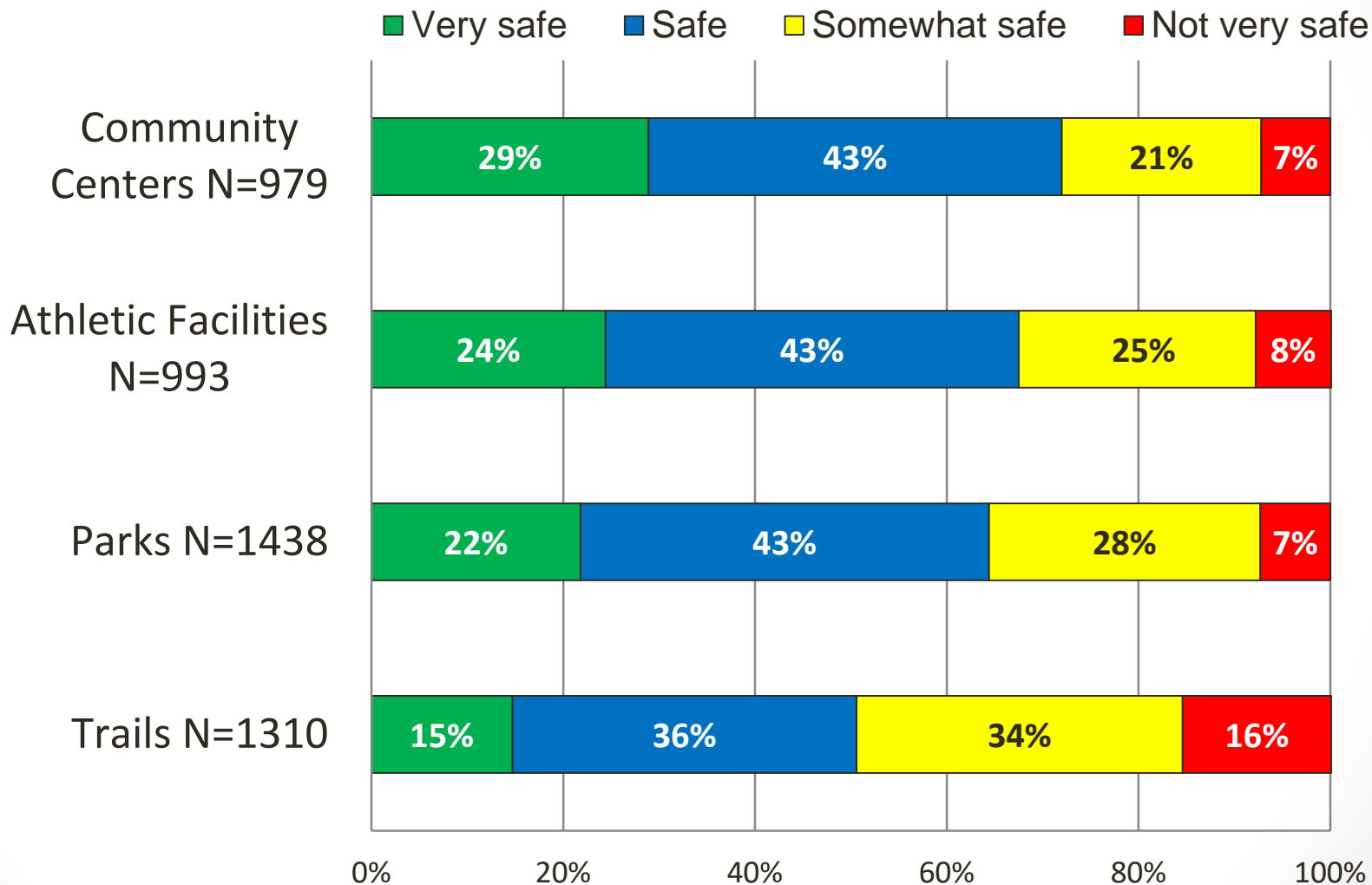
**Q. How do you and/members of your household typically travel to the parks and recreation facilities that you use? N = 1,562**



*Responses will add to more than 100% due to multiple answers allowed*

## Safety

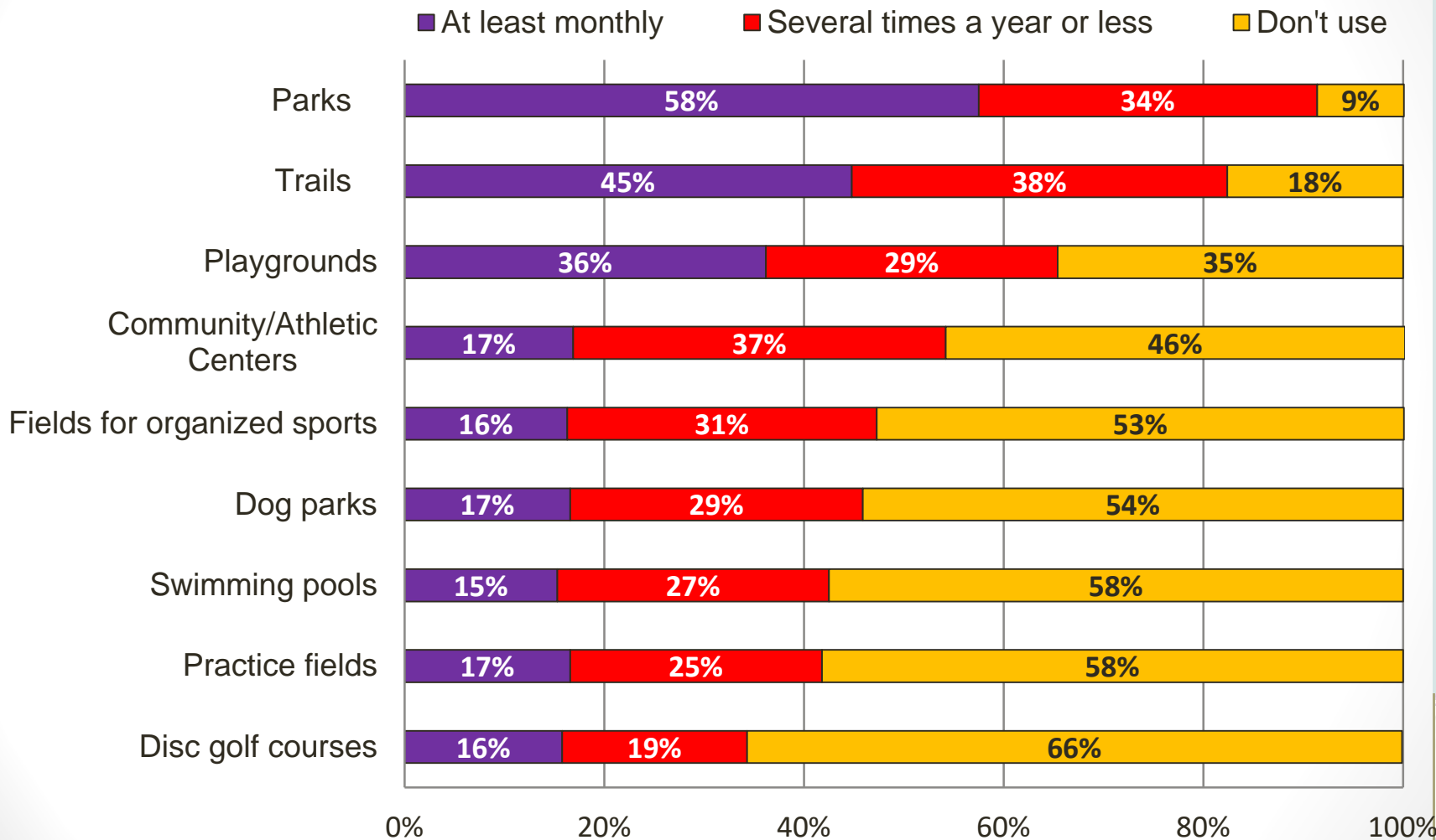
**Q. Overall, how safe do you feel when visiting these facilities in Fort Worth?**



*Responses exclude don't use/not aware answers*

## Frequency of Use

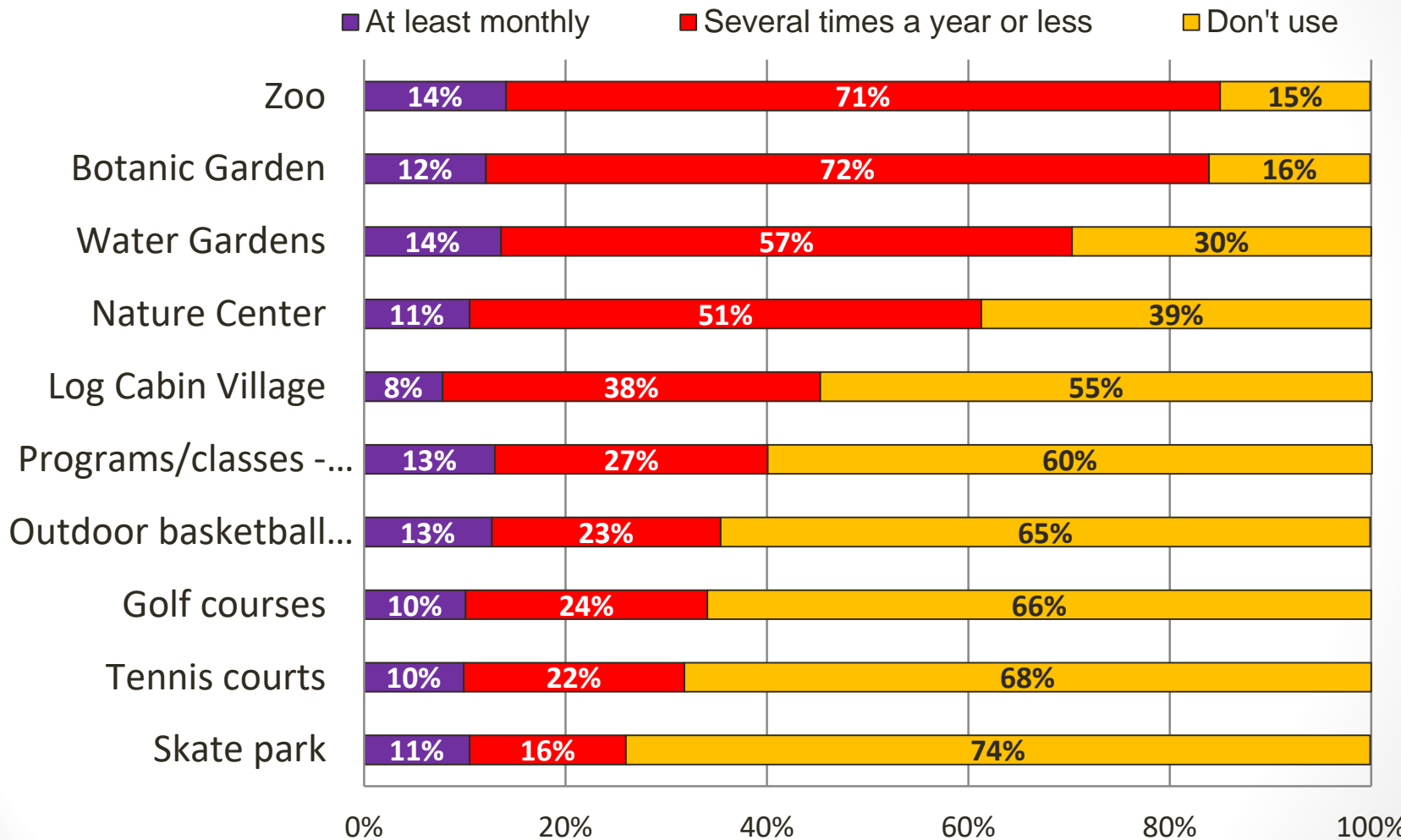
**Q. How often do you or other household members use or visit these park facilities in the City of Fort Worth? N=1,446**





## Frequency of Use - Continued

**Q. How often do you or other household members use or visit these park facilities in the City of Fort Worth? N=1446**



## Spending Priorities

**Q. Currently, approximately seven cents of every dollar is dedicated to providing funds to Park & Recreation services in the City's general fund operating budget. Would you be willing to pay more, the same or less for each item listed below? N=1,350**

Facility	Pay MORE	Pay the SAME	Pay LESS	Don't Know
Increase maintenance of parks and trails	<b>42%</b>	42%	8%	8%
Renovate existing parks and facilities	<b>46</b>	37	7	10
Acquire more land for parks	<b>42</b>	39	8	10
Acquire more land for trails and trail connections	<b>42</b>	38	10	10
Increase maintenance & operations of community centers	27	44	12	17
Increase maintenance & operations of aquatic centers	26	42	13	19
Increase supervised recreation activities/programs	24	44	15	17

## Spending Priorities - Most Important Strategies

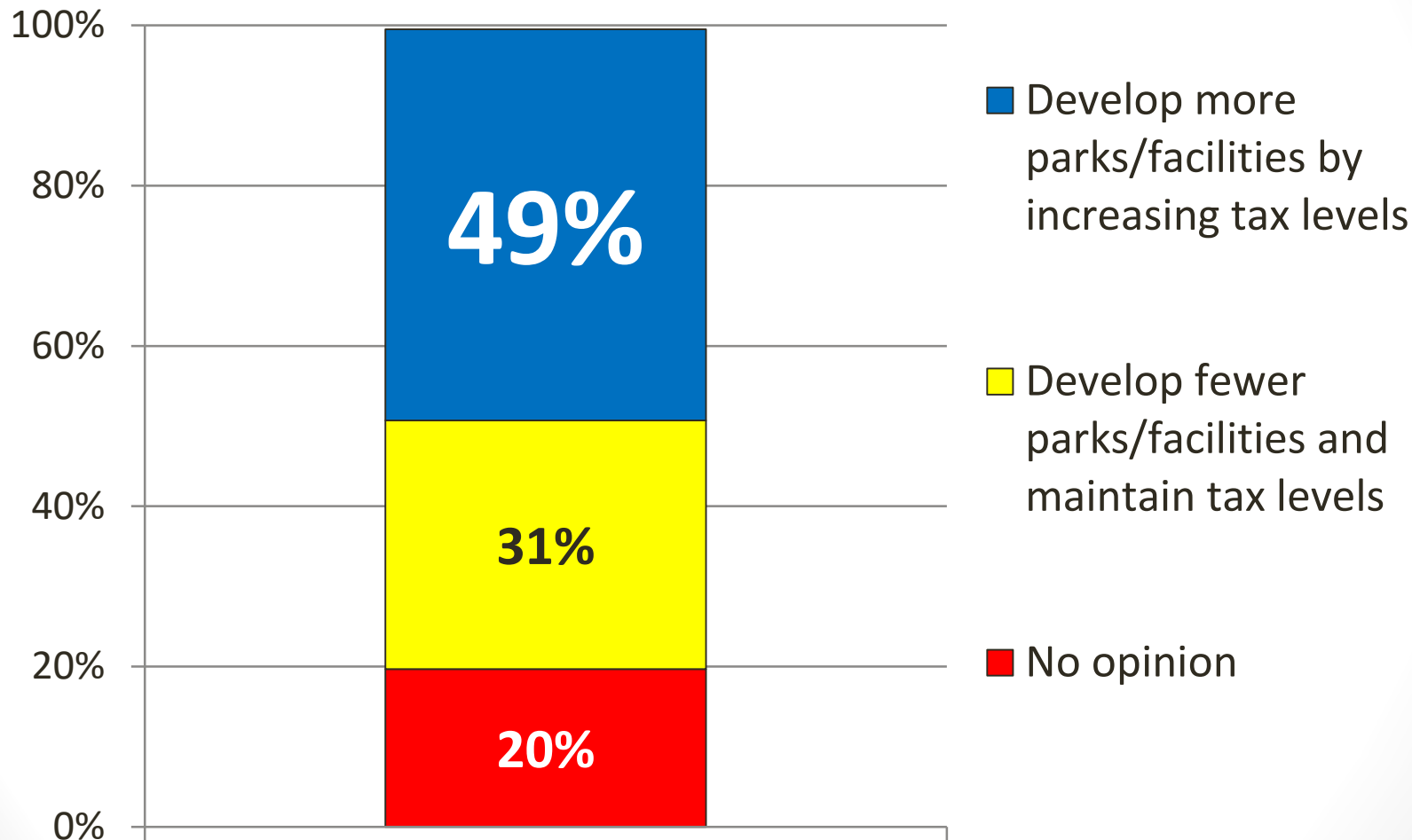
**Q. Which THREE strategies are the MOST IMPORTANT to you for the Park & Recreation Department to focus on within the next five years? Select your TOP THREE in rank order.**

Facility	IMPORTANCE RANK*
Increase maintenance of parks and trails	1
Renovate existing parks and facilities	2
Acquire more land for parks	3
Acquire more land for trails and trail connections	4
Increase maintenance & operations of community centers	5
Increase supervised recreation activities/programs	6
Increase maintenance & operations of aquatic centers	7

*\*Importance Rank – the sum of the first, second and third most important ranked facilities by respondents.*

## Develop More or Fewer Parks

**Q. Do you think the Fort Worth Park & Recreation Department should;  
N=1,254**



**Most Needed Facilities in Fort Worth – Top Ten**  
**Q. Which facilities do you feel are MOST needed in Fort Worth parks?**  
**N=1,203**

Facility	3- Definitely Needed	2- Somewhat Needed	1- Not needed	N/A	Mean Score
Hike, bike, walking trails	55%	28%	8%	9%	<b>2.52</b>
Open spaces/natural areas	50	29	10	11	<b>2.45</b>
Playgrounds	43	28	13	16	<b>2.36</b>
Age friendly playgrounds	41	28	13	18	<b>2.35</b>
Benches/seating areas	39	33	12	16	<b>2.32</b>
Picnic shelters/picnic tables	38	36	12	14	<b>2.30</b>
Aquatic Center (play features, swim lanes, etc.)	35	26	16	23	<b>2.25</b>
Athletic fields (lighted)	27	31	14	29	<b>2.18</b>
Multi-use courts (tennis, basketball, etc.)	25	34	16	24	<b>2.12</b>
Dog parks	27	33	19	21	<b>2.10</b>
Off road bike trails	28	30	20	22	<b>2.10</b>

**Most Needed Facilities in Fort Worth – Priority Ranked – Top Ten**  
**Q. Which three facilities are the MOST important to you for the Park & Recreation Department to focus on within the next five years? N=1,203**

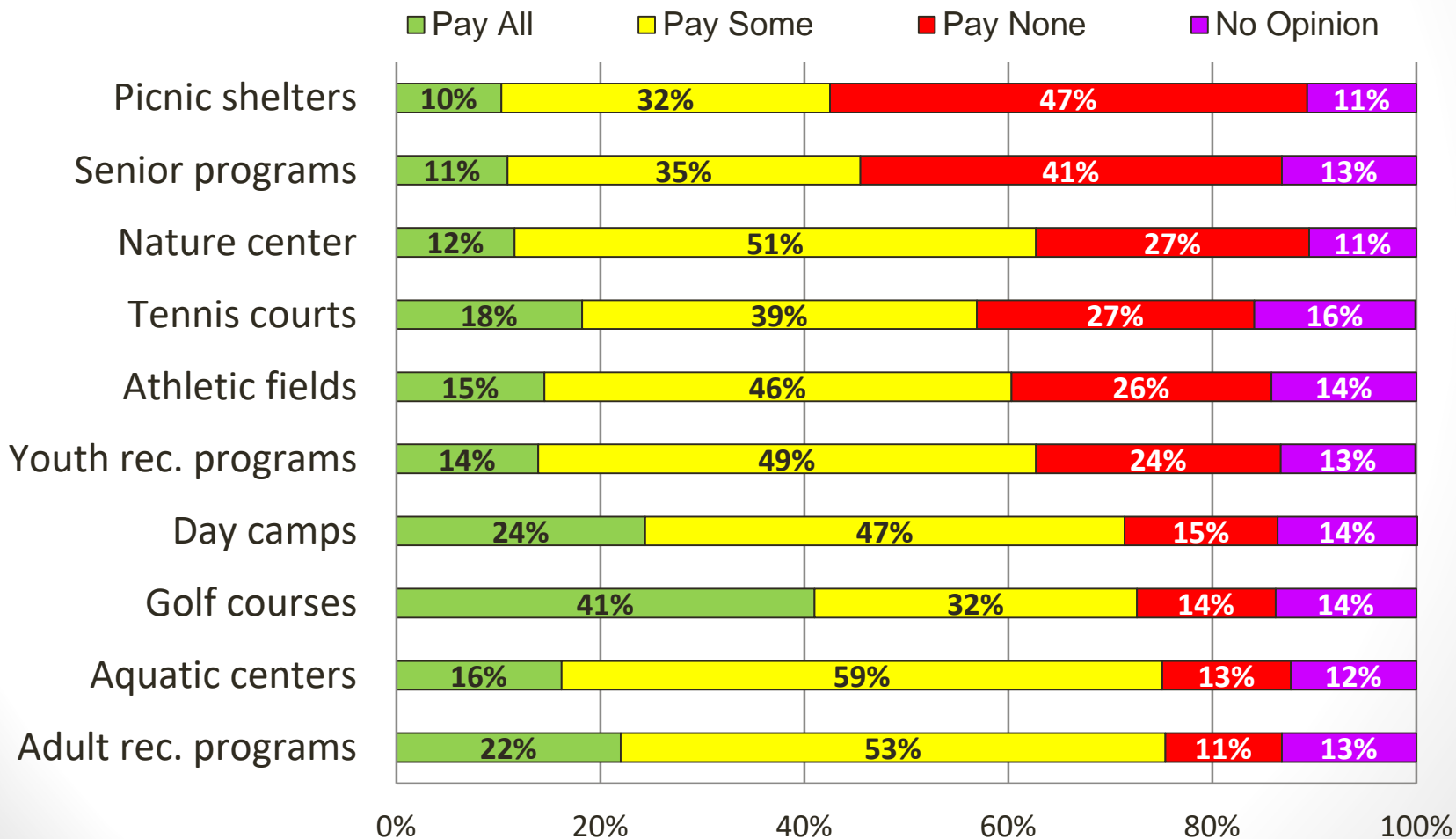
Facility	PRIORITY RANK
Hike, bike, walking trails	1
Open spaces/natural areas	2
Aquatic Center (play features, swim lanes, etc.)	3
Playgrounds	4
Benches/seating areas	5
Dog parks	6
Age friendly playgrounds	7
Picnic shelters/picnic tables	8
Athletic fields (lighted)	9
Off road bike trails	10

Priority Rank – the sum of the first, second and third most important ranked facilities by respondents.



# Willingness to Pay a Share to Operate and Maintain Facilities

**Q. Nationally people who visit or use parks and recreation facilities and/or programs often pay a share of the cost to operate and maintain those facilities. Do you feel the USER in Fort Worth should pay all, some or none of the cost for the operation of each facility? N=1,157**



# **National Service Research Background/Contact Information**

Contact: Andrea Thomas, Owner

2601 Ridgmar Plaza, Suite 2

Fort Worth, Texas 76116

817-312-3606

817-326-6109-fax

e-mail: [andrea@nationalserviceresearch.com](mailto:andrea@nationalserviceresearch.com)

web site: [www.nationalserviceresearch.com](http://www.nationalserviceresearch.com)

National Service Research (NSR), founded in 1989, is a full-service quantitative and qualitative market research consulting firm and conducts market studies for the public and private sector. NSR conducts various types of consumer and business research including focus groups and surveys nationwide. NSR's owner and founder, Andrea Thomas, has over thirty years of professional market research experience.

**Completed  
Capital Improvements  
2015 - 2019**

## PARK & RECREATION DEPARTMENT COMPLETED PROJECTS

(as of April 30, 2020)

The following projects have been completed in the timelines as noted. All capital improvement projects are funded primarily from the proceeds of Parks, Recreation and Community Center Improvement bonds, other sources include:

<b>ALF</b> - Annual Lease Fees	<b>Mayfest</b> - Mayfest Revenue
<b>CDBG</b> - Community Development Block Grant	<b>MEWA</b> - Mitigation / Easement / Workspace Agreement Funds
<b>CIP</b> - Capital Improvement Program	<b>Other</b> - Waste Management, Tarrant County, Storm Water
<b>CO</b> - Certificates of Obligation	<b>PDF</b> - Park Dedication Fees
<b>CPRF</b> - Capital Project Reserve Fund	<b>PE</b> - Pipeline Easements
<b>Donation</b> - Funds Gifted From Private Sources	<b>S&amp;V</b> - Streams & Valleys Inc. Funds
<b>GSRF</b> - Golf Special Revenue Fund	<b>TIF</b> - Tax Increment Financing
<b>GF</b> - General Fund	<b>TN</b> - Tax Notes
<b>Grants</b> - Local, State, Federal Agencies or Private Organizations	<b>TPWD</b> - Texas Parks and Wildlife Department Grant
<b>GRF</b> - Gas Revenue Funds	<b>TRWD</b> - Tarrant Regional Water District

### LISTING OF COMPLETED PROJECTS

FISCAL YEAR	NO.	AMOUNT
FY 2019	21	\$13,884,627
FY 2018	32	\$23,063,974
FY 2017	26	\$9,138,415
FY 2016	34	\$22,175,138
FY 2015	10	\$4,941,138
<b>FY 2015 - 2019: Total No. Projects / Amount to Date:</b>	<b>123</b>	<b>\$73,203,294</b>

FY 2019 Completed Projects	CD	Amount	Source	Completion Date
Patricia LeBlanc Park - Play Piece	6	\$45,000	GRF	Nov-18
Louella Bales Baker Park - Swings	8	\$5,000	GRF	Nov-18
Rosemont Park - Climber	9	\$30,000	GRF	Nov-18
Fort Worth Water Gardens Quiet Pool and South Wall Design Study	9	\$100,000	TIF	Dec-18
R.D. Evans Community Center Road and Parking Improvements	3	\$124,826	CIP	Dec-18
Marion Sansom Park Road and Parking Improvements	7	\$55,209	CIP	Dec-18
Thomas Place Community Center Road and Parking Improvements	7	\$42,224	CIP	Dec-18
Hillside Park Road and Parking Improvements	8	\$108,531	CIP	Dec-18
Andrew "Doc" Sessions Community Center Parking Lot Improvements	8	\$24,085	CIP	Dec-18
Eugene McCray Community Center Expansion	5	\$1,877,605	CIP, GRF	Feb-19
Handley-Meadowbrook Community Center Expansion	5	\$2,688,417	CIP, GRF	Feb-19
Remington Pointe Reserve Park Development	2	\$578,856	CIP, GRF	Mar-19
Foster Park Drainage and Erosion Control	3	\$105,705	CIP, GRF	Mar-19
Dream Park - Universal Playground	9	\$3,096,759	Donation	Mar-19
North Z Boaz Park - Playground Installation	3	\$200,000	GRF	Mar-19
Farimount Park	9	\$52,800	GRF	Apr-19
Deer Creek Reserve Park Development	6	\$575,363	CIP, GRF	Apr-19
Bunche Park Phase I Development	5	\$727,284	CIP, CDBG, GF, Donation	Apr-19
Mosier Valley Reserve Park - Phase I	5	\$380,139	PDF, GRF, GR	May-19
East FW Trail Extension (Handley Ederville to River Trails) Part 1	9	\$2,933,824	CIP, GF	Sep-19
Overton Park - Trail Improvements	3	\$133,000	GAS, TPW-CIP	Sep-19
<b>21 Projects</b>		<b>\$13,884,627</b>		

## PARK & RECREATION DEPARTMENT COMPLETED PROJECTS

(as of April 30, 2020)

The following projects have been completed in the timelines as noted. All capital improvement projects are funded primarily from the proceeds of Parks, Recreation and Community Center Improvement bonds, other sources include:

<b>ALF</b> - Annual Lease Fees	<b>Mayfest</b> - Mayfest Revenue
<b>CDBG</b> - Community Development Block Grant	<b>MEWA</b> - Mitigation / Easement / Workspace Agreement Funds
<b>CIP</b> - Capital Improvement Program	<b>Other</b> - Waste Management, Tarrant County, Storm Water
<b>CO</b> - Certificates of Obligation	<b>PDF</b> - Park Dedication Fees
<b>CPRF</b> - Capital Project Reserve Fund	<b>PE</b> - Pipeline Easements
<b>Donation</b> - Funds Gifted From Private Sources	<b>S&amp;V</b> - Streams & Valleys Inc. Funds
<b>GSRF</b> - Golf Special Revenue Fund	<b>TIF</b> - Tax Increment Financing
<b>GF</b> - General Fund	<b>TN</b> - Tax Notes
<b>Grants</b> - Local, State, Federal Agencies or Private Organizations	<b>TPWD</b> - Texas Parks and Wildlife Department Grant
<b>GRF</b> - Gas Revenue Funds	<b>TRWD</b> - Tarrant Regional Water District

<b>FY 2018 Completed Projects</b>	<b>CD</b>	<b>Amount</b>	<b>Source</b>	<b>Date</b>
Marina Park Parking Lot Improvements	7	\$50,000	GRF	Oct-17
Botanic Gardens Walk Improvements	7	\$20,000	GRF	Oct-17
Trinity Park Road and Parking Improvements	9	\$475,553	GRF	Oct-17
Rosedale Plaza Park Improvements	5	\$302,000	GF	Oct-17
South Meadows Park Walk Improvements	8	\$25,000	GRF	Nov-17
Trail Drivers Park Improvements	2	\$523,245	CIP / GRF	Dec-17
Springdale Park Walk Improvements	4	\$25,000	GRF	Dec-17
Quanah Parker - Handley Ederville Trail	4	\$2,883,040	CIP	Jan-18
Mistletoe Heights - Trinity River Clear Fork Bridge	9	\$1,215,435	Grant / S&V / TRWD	Jan-18
Victory Forest Community Center	9	\$6,865,965	CIP / CO / PDF	Jan-18
Summerbrook Park Playground Replacement	4	212,625	CIP	Feb-18
Titus Paulsel Park Playground Replacement	5	\$234,582	CIP / GRF	Feb-18
Southcreek Park Playground Replacement	6	\$258,402	CIP, GRF	Feb-18
Arrow S. Park Playground Replacement	7	\$212,625	CIP	Feb-18
Camp Joy Park Playground Replacement	7	\$212,625	CIP	Feb-18
Monticello Park Playground Replacement	7	\$212,625	CIP	Feb-18
Harvey Street Playground Replacement	8	\$212,625	CIP	Feb-18
Eagle Mountain Ranch Playground Replacement	7	\$225,200	GRF	Mar-18
Anderson Campbell Park Playground	2	\$155,000	CDBG	Apr-18
Carter Park Playground Replacement	8	\$155,000	CDBG	Apr-18
Carter Park Road Replacement	8	\$235,000	CDBG	Apr-18
Springdale Park Walk Improvements	4	\$25,000	GRF	Apr-18
Worth Heights Park	9	\$25,000	GRF	Apr-18
Pecan Valley Park - shelter	3	\$52,800	GRF	Apr-18
Ellis Park - shelter	8	\$52,800	GRF	Apr-18
Gateway Park Synthetic Turf Replacement	4	\$2,212,900	GRF	May-18
Security Lighting at 21 Parks	CW	\$469,128	CIP, GRF	Jun-18
South Z Boaz Park Shelter	3	\$25,000	GRF	Jun-18
Linwood-Jesse D. Sandoval Park Improvements	9	\$52,800	GRF	Jun-18
Northwest Community Park Development - Phase 2	7	\$4,300,000	TPWD, CIP, GRF	Jul-18
Rosemont Park Improvements	9	\$587,000	GRF, CIP	Jul-18
McLeland Tennis Center Improvements	9	\$550,000	CIP	Jul-18
<b>32 Projects</b>		<b>\$23,063,974</b>		

## PARK & RECREATION DEPARTMENT COMPLETED PROJECTS

(as of April 30, 2020)

The following projects have been completed in the timelines as noted. All capital improvement projects are funded primarily from the proceeds of Parks, Recreation and Community Center Improvement bonds, other sources include:

<b>ALF</b> - Annual Lease Fees	<b>Mayfest</b> - Mayfest Revenue
<b>CDBG</b> - Community Development Block Grant	<b>MEWA</b> - Mitigation / Easement / Workspace Agreement Funds
<b>CIP</b> - Capital Improvement Program	<b>Other</b> - Waste Management, Tarrant County, Storm Water
<b>CO</b> - Certificates of Obligation	<b>PDF</b> - Park Dedication Fees
<b>CPRF</b> - Capital Project Reserve Fund	<b>PE</b> - Pipeline Easements
<b>Donation</b> - Funds Gifted From Private Sources	<b>S&amp;V</b> - Streams & Valleys Inc. Funds
<b>GSRF</b> - Golf Special Revenue Fund	<b>TIF</b> - Tax Increment Financing
<b>GF</b> - General Fund	<b>TN</b> - Tax Notes
<b>Grants</b> - Local, State, Federal Agencies or Private Organizations	<b>TPWD</b> - Texas Parks and Wildlife Department Grant
<b>GRF</b> - Gas Revenue Funds	<b>TRWD</b> - Tarrant Regional Water District

<b>FY 2017 Completed Projects</b>	<b>CD</b>	<b>Amount</b>	<b>Source</b>	<b>Date</b>
Highland Hills Park - Park Improvements	8	\$89,694	GRF	Oct-16
Eugene McCray Park at Lake Arlington Improvments	5	\$110,665	GRF	Oct-16
Bunche Park Master Plan	5	\$30,475	CIP	Oct-16
Harmon Athletic Field / Park Improvements	8	\$1,520,253	GRF/ CIP / Dona. / CO	Oct-16
Village Creek Shelter Replacement	5	\$130,000	GRF	Dec-16
Diamond Hill Park Improvements	2	\$61,000	CDBG / GRF	Dec-16
Camelot Park Improvements	8	\$52,398	GRF	Dec-16
Traders Oak Park Improvements	2	\$53,056	GRF	Dec-16
Gateway Park Road and Parking Lot	4	\$683,767	CIP / GRF	Jan-17
Sandy Lane Park Improvements	5	\$1,503,046	CIP / GRF / License Fee	Jan-17
Fort Worth Nature Center Boardwalk Redevelopment	7	\$1,383,346	Donation	Jan-17
Pecan Valley Golf Course Pump Station Replacement	3	\$660,000	GRF	Jan-17
Sylvania Park / Riverside CC Road & Parking Improv.	4	\$233,065	CIP / GRF	Feb-17
Lost Spurs Park Improvements	7	\$327,301	GRF	Feb-17
Oakland Lake Park Improvements	8	\$516,339	CIP / GRF / CO	Feb-17
Victory Forest Trail Improvements	9	\$150,000	CIP	Mar-17
Jennings May St. Louis - ADA Improvements and Site Furnishings	9	\$25,000	GRF	Mar-17
J.T. Hinkle Park Development	7	\$330,697	CIP / PDF / GRF	Apr-17
Coventry Hills Park Development	4	\$187,941	PDF	Apr-17
Englewood Park Improvements	5	\$25,000	GRF	May-17
Dabney Park Improvements	6	\$25,000	CIP, GRF	May-17
Foster Park Improvements	3	\$64,000	GRF	Jun-17
Eastgate Reserve Park Development	7	\$195,000	PDF / GRF	Jun-17
Fort Worth Nature Center Levee Repair	CW	\$425,000	CIP / Grant / Donation	Aug-17
Kellis Park Parking Lot Improvements	9	\$96,372	CIP	Aug-17
Rosedale Plaza Park Improvements	5	\$260,000	GF	Sep-17
<b>26 Projects</b>		<b>\$9,138,415</b>		

## PARK & RECREATION DEPARTMENT COMPLETED PROJECTS

(as of April 30, 2020)

The following projects have been completed in the timelines as noted. All capital improvement projects are funded primarily from the proceeds of Parks, Recreation and Community Center Improvement bonds, other sources include:

<b>ALF</b> - Annual Lease Fees	<b>Mayfest</b> - Mayfest Revenue
<b>CDBG</b> - Community Development Block Grant	<b>MEWA</b> - Mitigation / Easement / Workspace Agreement Funds
<b>CIP</b> - Capital Improvement Program	<b>Other</b> - Waste Management, Tarrant County, Storm Water
<b>CO</b> - Certificates of Obligation	<b>PDF</b> - Park Dedication Fees
<b>CPRF</b> - Capital Project Reserve Fund	<b>PE</b> - Pipeline Easements
<b>Donation</b> - Funds Gifted From Private Sources	<b>S&amp;V</b> - Streams & Valleys Inc. Funds
<b>GSRF</b> - Golf Special Revenue Fund	<b>TIF</b> - Tax Increment Financing
<b>GF</b> - General Fund	<b>TN</b> - Tax Notes
<b>Grants</b> - Local, State, Federal Agencies or Private Organizations	<b>TPWD</b> - Texas Parks and Wildlife Department Grant
<b>GRF</b> - Gas Revenue Funds	<b>TRWD</b> - Tarrant Regional Water District

<b>FY 2016 Completed Projects</b>	<b>CD</b>	<b>Amount</b>	<b>Source</b>	<b>Date</b>
Martin Luther King Park Ball Field Lighting Replacement	5	\$235,000	CO	Nov-15
Trail Drivers Park Ball Field Lighting Replacement	2	\$235,000	CO	Nov-15
Northwest Community Park Development - Phase I	7	\$1,083,730	TPWD / PDF	Nov-15
McLeland Tennis Center – Court Resurfacing	9	\$56,960	GRF / Donation	Nov-15
Eugene McCray Park at Lake Arlington Parking Lot	5	\$31,143	GRF / Other	Dec-15
Log Cabin Village Sanitary Sewer and Restroom	9	\$282,292	GRF / CIP	Dec-15
Forest Park Improvements	9	\$1,248,673	GRF / CIP	Dec-15
River Park Trail	3	\$10,000	Donation	Dec-15
Ridglea Hills Park Improvements	3	\$31,814	GRF / Donation	Dec-15
Delga Park Trail Improvements	8	\$47,000	CDBG	Jan-16
Oakmont Linear Park South Trail Development	6	\$167,572	GRF	Mar-16
Hallmark Park Improvements	8	\$231,938	PDF / GRF	Mar-16
Jefferson Davis Park Improvements	9	\$200,561	GRF / PM	Mar-16
North Z. Boaz Community Park Phase 1 and 2	6	\$1,750,000	GRF / ALF / CIP /	Mar-16
Mallard Cove Park Improvements	5	\$233,238	CIP / MEWA	Apr-16
Creekside Park Improvements	6	\$202,431	CIP / GRF	Apr-16
Quail Ridge Park Improvements	6	\$212,058	CIP / GRF	Apr-16
Lincolnshire Park Improvements	8	\$268,164	CIP / CO / GRF	Apr-16
Shackleford Park Improvements	8	\$206,108	CIP / CO / GRF	Apr-16
Gateway Park / Grant Development	4	\$2,385,442	GRF / TPWD / S&V /	Apr-16
Terry Park Improvements	2	\$280,200	CO / GRF / CIP	May-16
Northside Park Improvements	2	\$336,240	GRF / CIP	May-16
Highcrest Park Improvements	2	\$268,725	PDF	May-16
Summerfields Park Improvements	4	\$198,000	CIP / CO	May-16
Rosen Park Accessible Walks and Shelter Improvements	2	\$11,000	GRF	May-16
Chisholm Trail Community Park - Phase I	6	\$3,800,000	CIP	Jun-16
Martin Luther King Park Parking Lot Improvements	5	\$84,150	CIP	Jun-16
West Vickery Streetscape - NTTA	9	\$750,000	CIP	Jul-16
River Trails Playground	5	\$145,200	GRF	Jul-16
Chadwick Park - Multi-Purpose Courts & Trail	7	\$81,500	PDF / MEWA	Jul-16
River Park - Neigh. Trans. Connect.- Ped. /Byc. Grant	3	\$118,000	Grant / S&V / TRWD	Aug-16
Oakland Drive - Neigh. Trans. Con.- Ped. /Byc. Grant	4	\$768,000	Grant / S&V / TRWD	Aug-16
Kellis Park - Neigh. Trans. Con.- Ped. /Byc. Grant	9	\$890,000	Grant / S&V / TRWD	Aug-16
Rockwood Golf Course Renovation	2	\$5,325,000	CPRF/CIP/GRF/TRWD	Sep-16
<b>34 Projects</b>		<b>\$22,175,138</b>		



## PARK & RECREATION DEPARTMENT COMPLETED PROJECTS

(as of April 30, 2020)

The following projects have been completed in the timelines as noted. All capital improvement projects are funded primarily from the proceeds of Parks, Recreation and Community Center Improvement bonds, other sources include:

<b>ALF</b> - Annual Lease Fees	<b>Mayfest</b> - Mayfest Revenue			
<b>CDBG</b> - Community Development Block Grant	<b>MEWA</b> - Mitigation / Easement / Workspace Agreement Funds			
<b>CIP</b> - Capital Improvement Program	<b>Other</b> - Waste Management, Tarrant County, Storm Water			
<b>CO</b> - Certificates of Obligation	<b>PDF</b> - Park Dedication Fees			
<b>CPRF</b> - Capital Project Reserve Fund	<b>PE</b> - Pipeline Easements			
<b>Donation</b> - Funds Gifted From Private Sources	<b>S&amp;V</b> - Streams & Valleys Inc. Funds			
<b>GSRF</b> - Golf Special Revenue Fund	<b>TIF</b> - Tax Increment Financing			
<b>GF</b> - General Fund	<b>TN</b> - Tax Notes			
<b>Grants</b> - Local, State, Federal Agencies or Private Organizations	<b>TPWD</b> - Texas Parks and Wildlife Department Grant			
<b>GRF</b> - Gas Revenue Funds	<b>TRWD</b> - Tarrant Regional Water District			
<b>FY 2015 Completed Projects</b>	<b>CD</b>	<b>Amount</b>	<b>Source</b>	<b>Date</b>
Rodeo Park (Marine Creek Corridor Improvements)	2	\$435,370	TPWD/CIP/GRF	Dec-14
Lincoln Park (Marine Creek Corridor Improvements)	2	\$512,334	TPWD/CIP/GRF	Dec-14
Marine Creek Linear Park (Marine Creek Corridor Improvements)	2	\$1,214,207	TPWD/CIP/GRF	Dec-14
Buck Sansom Park (Marine Creek Corridor Improvements)	2	\$1,228,008	TPWD/CIP/GRF/CO	Dec-14
Botanic Garden Horseshoe Walk Replacement	7	\$29,500	Donation	Feb-15
Arcadia Park Trail Connection	4	\$162,030	PDF	Apr-15
Cobb Park - Road & Drainage Improvements	8	\$556,690	GRF / CIP /TRWD	May-15
Diamond Hill Skate Park	2	\$120,000	CDBG	Aug-15
Sagamore Hills Park Playground Replacement	5	\$155,000	CDBG	Aug-15
Patricia LeBlanc Accessible Playground Renovation	6	\$528,000	CIP / Donation	Aug-15
<b>10 Projects</b>		<b>\$4,941,138</b>		

## CITY OF FORT WORTH MISSION STATEMENT

*Working together to build a strong community.*

## CITY OF FORT WORTH VISION STATEMENT

*Fort Worth will be the most livable and best managed city in the country.*

## CITY OF FORT WORTH CORE VALUES

*Exceptional Customer Experience*

*Accountability*

*Ethical Behavior*

*Diversity*

*Mutual Respect*

*Continuous Improvement*

## DEPARTMENTAL MISSION STATEMENT

*To enrich the lives of our citizens through the stewardship of our resources and the responsive provision of quality recreational opportunities and community service.*

