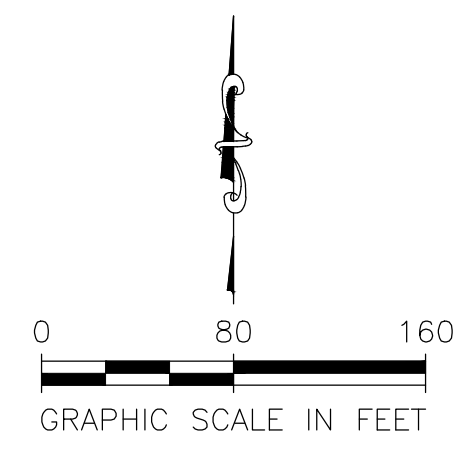
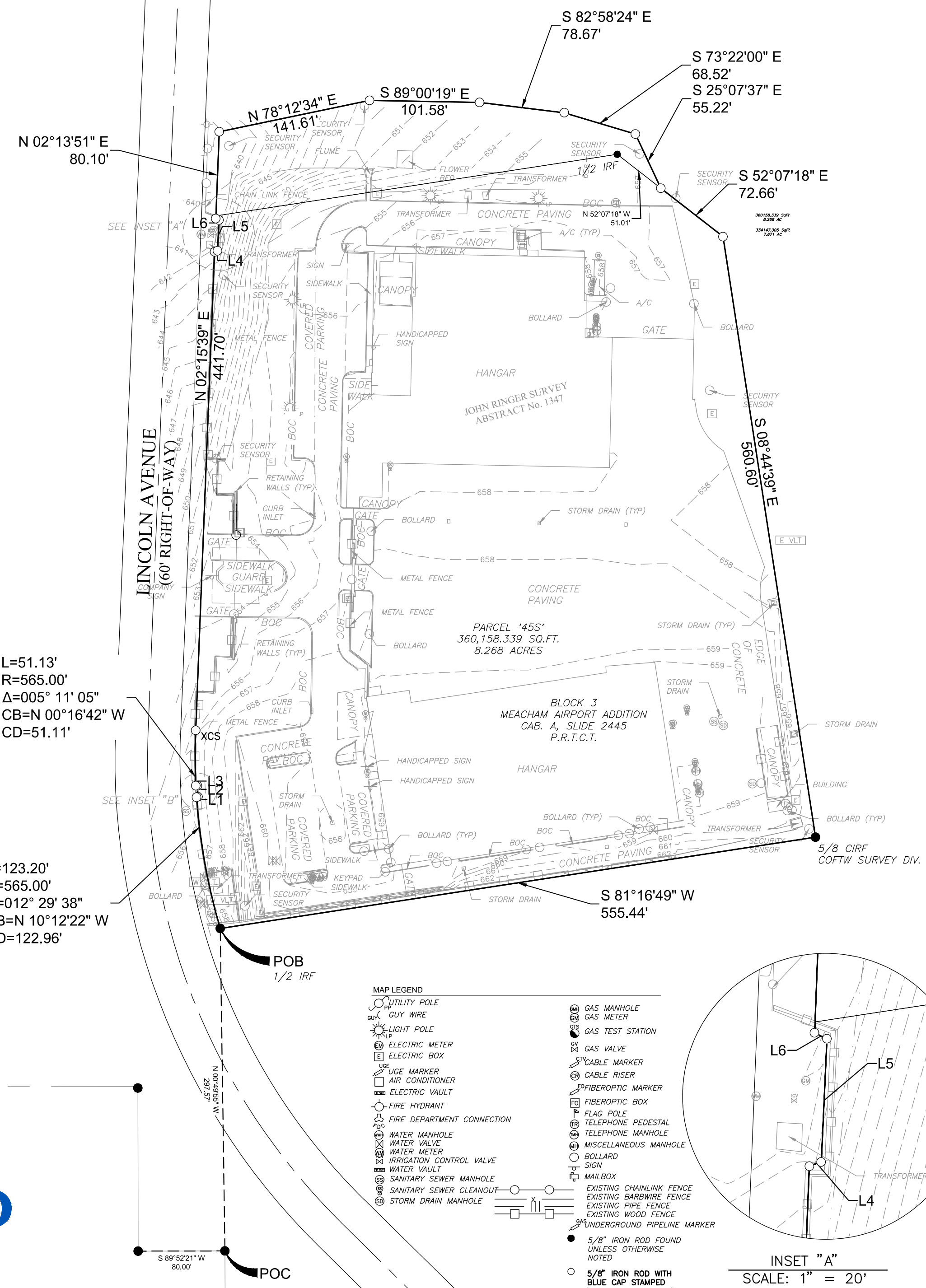


VICINITY MAP
"NOT TO SCALE"
FORT WORTH, TARRANT
COUNTY, TEXAS

- LEGEND**
- DE = INDICATES A DRAINAGE EASEMENT
 - SSE = INDICATES A SANITARY SEWER EASEMENT
 - UE = INDICATES A UTILITY EASEMENT
 - BL = INDICATES A BUILDING LINE
 - XCF = INDICATES "X" CUT IN CONCRETE; FOUND
 - XCS = INDICATES "X" CUT IN CONCRETE SET
 - IRF = INDICATES INCH IRON ROD FOUND
 - IRS = INDICATES 5/8-INCH IRON ROD SET WITH PLASTIC CAP STAMPED "SHIELD ENGINEERING"
 - CM = INDICATES A CONTROLLING MONUMENT
 - O.P.R.T.C.T. = OFFICIAL PUBLIC RECORDS, TARRANT COUNTY, TEXAS
 - P.R.T.C.T. = PLAT RECORDS, TARRANT COUNTY, TEXAS
 - MAGS = MAG NAIL SET
 - MFCP = METAL FENCE CORNER POST
 - CSS = COTTON SPINDLE SET
 - POC = POINT OF COMMENCING
 - POB = POINT OF BEGINNING



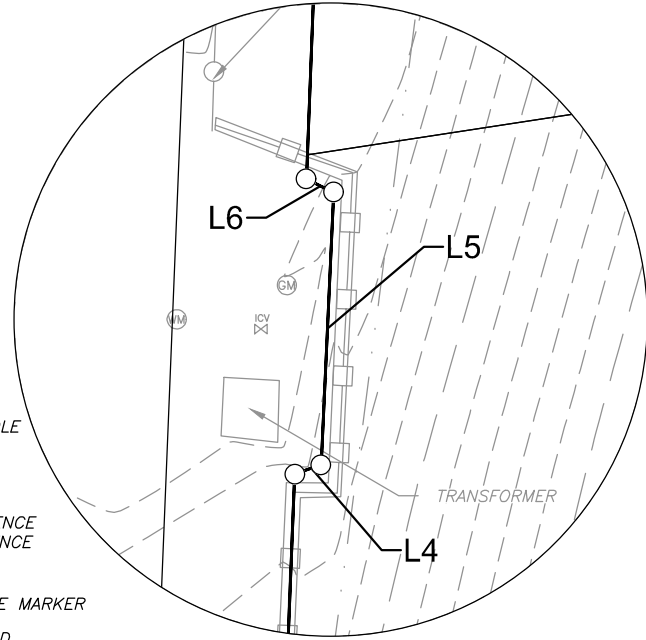
LINE #	BEARING	LENGTH
L1	N73°17'59"E	1.37'
L2	N03°04'56"W	10.16'
L3	N83°37'18"W	1.41'
L4	N70°34'31"E	2.92'
L5	N02°37'09"E	28.38'
L6	N63°27'08"W	3.17'



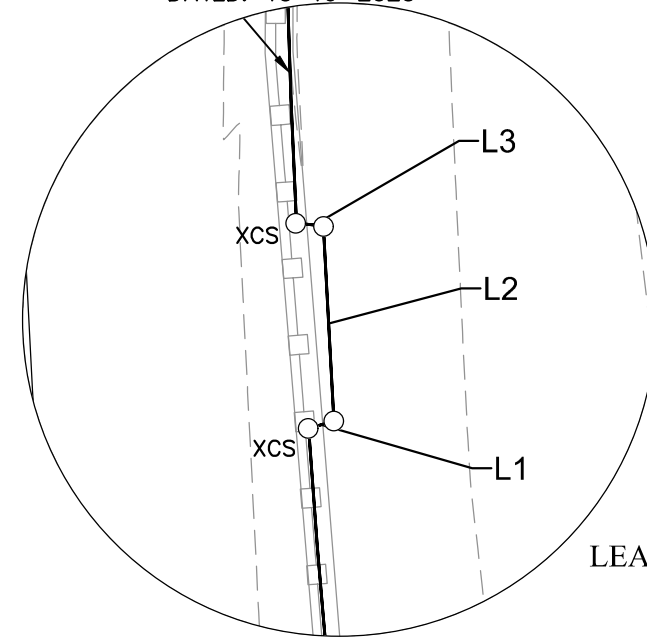
L=51.13'
R=565.00'
Δ=005° 11' 05"
CB=N 00°16'42" W
CD=51.11'

L=123.20'
R=565.00'
Δ=012° 29' 38"
CB=N 10°12'22" W
CD=122.96'

- MAP LEGEND**
- UTILITY POLE
 - GUY WIRE
 - LIGHT POLE
 - ELECTRIC METER
 - ELECTRIC BOX
 - PIPE MARKER
 - AIR CONDITIONER
 - ELECTRIC VAULT
 - FIRE HYDRANT
 - FIRE DEPARTMENT CONNECTION
 - WATER MANHOLE
 - WATER VALVE
 - WATER METER
 - IRRIGATION CONTROL VALVE
 - WATER VAULT
 - SANITARY SEWER MANHOLE
 - SANITARY SEWER CLEANOUT
 - STORM DRAIN MANHOLE
 - GAS MANHOLE
 - GAS METER
 - GAS TEST STATION
 - GAS VALVE
 - CABLE MARKER
 - CABLE RISER
 - FIBEROPTIC MARKER
 - FIBEROPTIC BOX
 - FLAG POLE
 - TELEPHONE PEDESTAL
 - TELEPHONE MANHOLE
 - MISCELLANEOUS MANHOLE
 - BOLLARD
 - SIGN
 - MAILBOX
 - EXISTING CHAINLINK FENCE
 - EXISTING BARB WIRE FENCE
 - EXISTING PIPE FENCE
 - EXISTING WOOD FENCE
 - UNDERGROUND PIPELINE MARKER
 - 5/8" IRON ROD FOUND UNLESS OTHERWISE NOTED
 - 5/8" IRON ROD WITH BLUE CAP STAMPED "SHIELD ENGINEERING" UNLESS OTHERWISE NOTED



INSET "A"
SCALE: 1" = 20'



INSET "B"
SCALE: 1" = 10'

FIELD NOTES LEASE TRACT '455'

BEING THAT CERTAIN TRACT OF LAND SITUATED IN THE JOHN RINGER SURVEY, ABSTRACT NO. 1347, IN THE CITY OF FORT WORTH, TARRANT COUNTY, TEXAS, AND BEING A PART OF BLOCK 3, MEACHAM AIRPORT ADDITION, AN ADDITION TO THE CITY OF FORT WORTH, TARRANT COUNTY, TEXAS, ACCORDING TO THE PLAT THEREOF RECORDED IN CABINET A, SLIDE 2445, PLAT RECORDS, TARRANT COUNTY, TEXAS (P.R.T.C.T.) AND BEING MORE PARTICULARLY DESCRIBED BY METES AND BOUNDS AS FOLLOWS:

COMMENCING AT A 5/8 INCH IRON ROD FOUND FOR THE REENTRANT CORNER OF THE SAID BLOCK 3, IN THE NORTH RIGHT OF WAY LINE OF NORTHWEST 36TH STREET, FROM WHICH A 5/8 INCH IRON ROD FOUND FOR THE SOUTHWEST CORNER OF THE SAID BLOCK 3 BEARS SOUTH 89°52'21" WEST, A DISTANCE OF 80.00 FEET;

THENCE OVER AND ACROSS THE SAID BLOCK 3, THE FOLLOWING COURSES AND DISTANCES:

NORTH 00°49'55" WEST, A DISTANCE OF 297.57 FEET TO A 1/2 INCH IRON ROD FOR THE POINT OF BEGINNING AND BEING A PC OF A CURVE TO THE RIGHT, HAVING A RADIUS OF 565.00 FEET;
 WITH SAID CURVE TO THE RIGHT, HAVING A CENTRAL ANGLE OF 12°29'38", A CHORD BEARING AND DISTANCE OF NORTH 10°12'22" WEST, A DISTANCE OF 122.96 FEET AND AN ARC DISTANCE OF 123.20 FEET TO AN "X" CUT SET FOR POINT FOR CORNER;
 NORTH 73°17'59" EAST, A DISTANCE OF 1.37 FEET TO A 5/8 INCH CAPPED MARKED "SHIELD ENGINEERING" (CIRS) FOR A POINT FOR CORNER;
 NORTH 03°04'56" WEST, A DISTANCE OF 10.16 FEET TO A (CIRS) FOR A POINT FOR CORNER;
 NORTH 83°37'18" WEST, A DISTANCE OF 1.41 FEET TO A (CIRS) FOR A POINT FOR CORNER AND A PC OF A CURVE TO THE RIGHT, HAVING A RADIUS OF 565.00 FEET;
 WITH SAID CURVE TO THE RIGHT, HAVING A CENTRAL ANGLE OF 5°11'05", A CHORD BEARING AND DISTANCE OF NORTH 00°16'42" WEST, A DISTANCE OF 51.11 FEET AND AN ARC DISTANCE OF 51.13 FEET TO A "X" CUT SET FOR A POINT FOR CORNER;
 NORTH 02°15'39" EAST, A DISTANCE OF 441.70 FEET TO A (CIRS) FOR A POINT FOR CORNER;
 NORTH 70°34'31" EAST, A DISTANCE OF 2.92 FEET TO A (CIRS) FOR A POINT FOR CORNER;
 NORTH 02°37'09" EAST, A DISTANCE OF 28.38 FEET TO A (CIRS) FOR A POINT FOR CORNER;
 NORTH 63°27'08" WEST, A DISTANCE OF 3.17 FEET TO A (CIRS) FOR A POINT FOR CORNER;
 NORTH 02°13'51" EAST, A DISTANCE OF 80.10 FEET TO A (CIRS) FOR A POINT FOR CORNER;
 NORTH 78°12'34" EAST, A DISTANCE OF 141.61 FEET TO A (CIRS) FOR A POINT FOR CORNER;
 SOUTH 89°00'19" EAST, A DISTANCE OF 101.58 FEET TO A (CIRS) FOR A POINT FOR CORNER;
 SOUTH 82°58'24" EAST, A DISTANCE OF 78.67 FEET TO A (CIRS) FOR A POINT FOR CORNER;
 SOUTH 73°22'00" EAST, A DISTANCE OF 68.52 FEET TO A (CIRS) FOR A POINT FOR CORNER;
 SOUTH 25°07'37" EAST, A DISTANCE OF 55.22 FEET TO A (CIRS) FOR A POINT FOR CORNER FROM WHICH A 1/2 INCH IRON ROD FOUND BEARS NORTH 52°07'18" WEST, A DISTANCE OF 51.01 FEET;
 SOUTH 52°07'18" EAST, A DISTANCE OF 72.66 FEET TO A (CIRS) FOR A POINT FOR CORNER;
 SOUTH 08°44'39" EAST, A DISTANCE OF 560.60 FEET TO A 5/8 INCH CAPPED IRON ROD MARKED "COFTW SURVEY DIV." FOUND FOR A POINT FOR CORNER;
 SOUTH 81°16'49" WEST, A DISTANCE OF 555.44 FEET TO THE POINT OF BEGINNING AND CONTAINING 8.268 ACRES (360,158.339 SQUARE FEET) OF LAND MORE OR LESS.

NOTES:

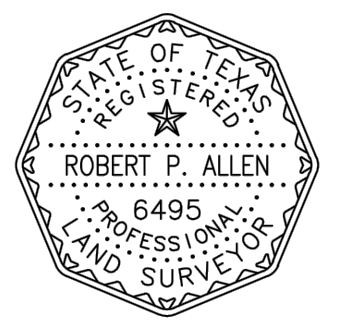
- Basis of bearings referenced to the Texas State Plane Coordinate System, North Central Zone, NAD83 via the Trimble VRS network for North Central Texas. All distances are surface distances.
- According to the National Flood Insurance Program, flood insurance rate map number 48439C0190L, revised March 21, 2019, the subject property lies in "Zone X", areas determined to be outside the 0.2% annual chance floodplain.
- This survey was prepared without the benefit of a current title commitment. There may be easements and/or other matters that could exist that are not shown. Prepared for the purposes of a lease boundary survey.

CERTIFICATION:

THAT I, ROBERT P. ALLEN, DO HEREBY CERTIFY THAT I PREPARED THIS EXHIBIT FROM AN ACTUAL AND ACCURATE SURVEY OF THE LAND AND THAT THE CORNER MONUMENTS SHOWN THEREON AS SET WERE PROPERLY SET UNDER MY PERSONAL SUPERVISION.

Robert P. Allen

ROBERT ALLEN
REGISTERED PROFESSIONAL LAND SURVEYOR
TEXAS REGISTRATION NUMBER 6495
DATED: 10-16-2020



LEASE SURVEY SHOWING
PARCEL '455'
BEING IN THE

JOHN RINGER SURVEY, ABSTRACT NUMBER A-1347,
AND BLOCK 3, MEACHAM AIRPORT
CABINET A, SLIDE 2445
PLAT RECORDS, TARRANT COUNTY, TEXAS
CITY OF FORT WORTH
TARRANT COUNTY, TEXAS



TBPE FIRM #F-11039 · TBPLS FIRM #10193890
1600 West 7th Street, Suite 200, Fort Worth, TX 76102 · 817.810.0696