

**Description of a
Temporary Construction Easement**

BEING a tract of land situated in the J. Conwill Survey, Abstract Number 343, City of Fort Worth, Tarrant County, Texas, being a portion of that tract of land described by deed to International Union of Operating Engineers, Local 178, AFL-CIO, recorded in Instrument Number D202040614, County Records, Tarrant County, Texas and being more particularly described by metes and bounds as follows:

COMMENCING at the northwest corner of said International Union of Operating Engineers tract and the northeast corner of a tract of land described by deed to American SOKOL Organization-SOKOL Fort Worth, recorded in Volume 5195, Page 571, said County Records, being in the south right-of-way line of Cromwell Marine Creek Road (a 60 foot right-of-way), from which a bent ½ inch iron rod found bears N 27°26' 58"E, 0.38 feet;

THENCE S 00°25'45"W, 45.00' feet, along the common line of said International Union of Operating Engineers and American SOKOL Organization tracts;

THENCE S 89°43'51"E, 0.83 feet, departing said common line, to the **POINT OF BEGINNING**;

THENCE S 89°43'51"E, 2.27 feet, to the beginning of a curve to the left;

THENCE with said curve to the left, an arc distance of 47.73 feet, through a central angle of 02°20'52", having a radius of 1165.00 feet, the long chord which bears N 89°05'43"E, 47.73 feet;

THENCE S 01°35'23"E, 97.94 feet;

THENCE S 88°24'37"W, 50.00 feet;

THENCE N 01°35'23"W, 98.58 feet to the **Point of Beginning** and containing 4,904 square feet or 0.113 acres of land more or less.

"Integral parts of this document"

1. Description
2. Exhibit

Basis of Bearing is the Texas Coordinate System
 North Central Zone 4202, NAD 83

IRF = Iron Rod Found

"Integral parts of this document"

1. Description
2. Exhibit



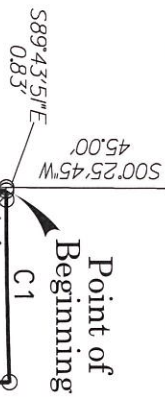
Tarrant County
 Vol. 5196, Pg. 986
 C.R.T.C.T.

Point of
 Commencing

Cromwell Marine
 Creek Road

Tarrant County
 Vol. 5196, Pg. 398
 C.R.T.C.T.

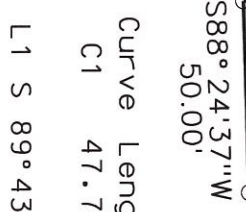
1/2" IRF (Iron) brs. (a 60 foot right-of-way)
 0.38'



American SOKOL Organization
 Vol. 5195, Pg. 571
 C.R.T.C.T.

J. CONWILL
 ABST. # 343
 SURVEY

International Order of Operating
 Engineers Local 178 AFL-CIO
 Inst. # D202040614
 C.R.T.C.T.



Curve Length	Delta	Radius	Bearing	Dist.
C1	47.74'	02°20'52"	1165.00'	N 89°05'43"E 47.73'
L1	S 89°43'51"E	2.27'		

Exhibit of a



Todd A. Bridges
 12/15/22

Temporary Construction Easement
 Situated in the J. Conwill Survey, Abstract Number 343
 City of Fort Worth, Tarrant County, Texas

TBPELS - LS FIRM REG. NO. 10177700

Copyright © 2022 Peloton Land Solutions, Inc.

