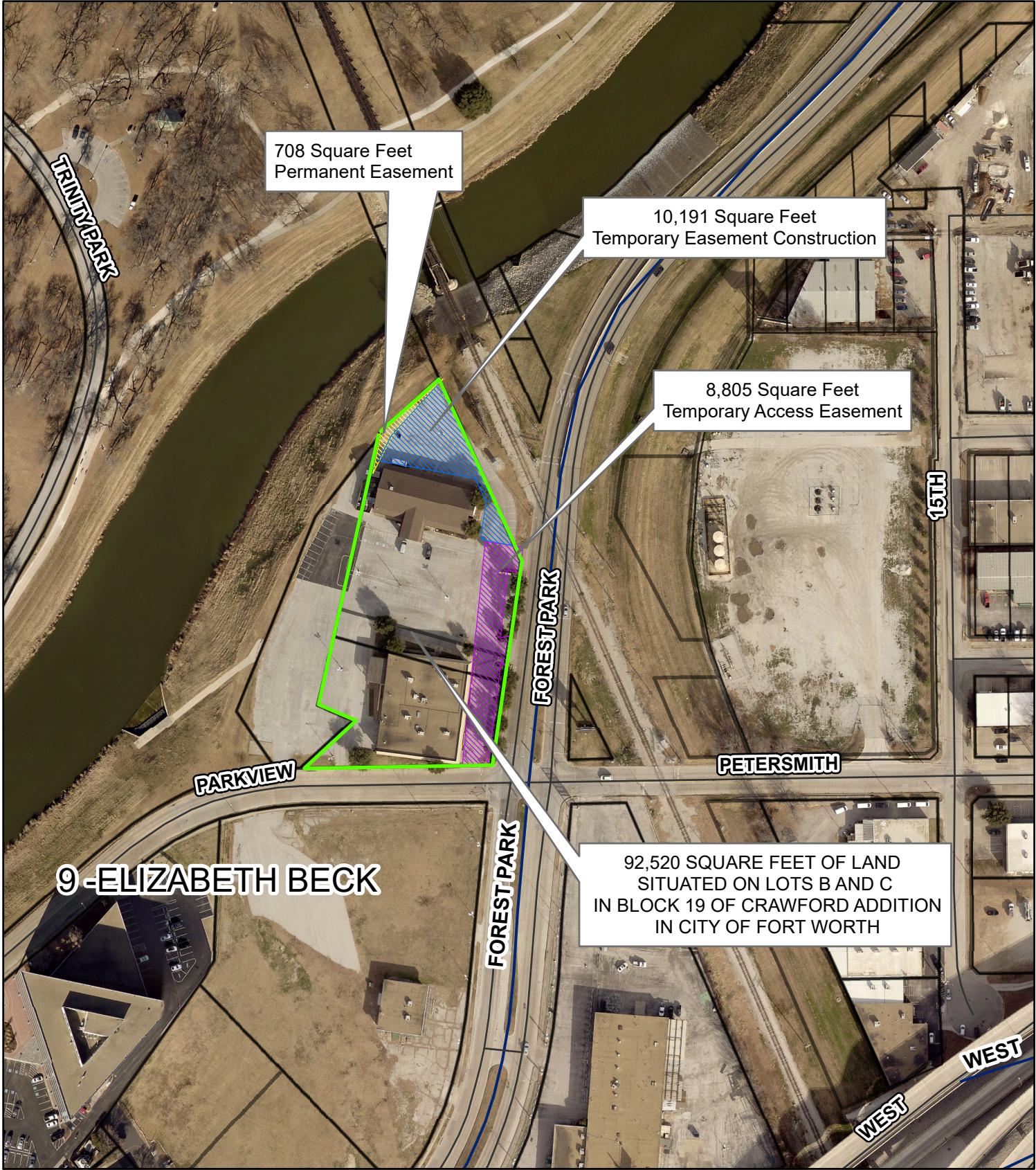





M & C MAP 1800 North Forest Park Blvd.

between Clear Fork Trinity River and North Forest Park Blvd



Copyright 2019 City of Fort Worth. Unauthorized reproduction is a violation of applicable laws. This product is for informational purposes and may not have been prepared for or be suitable for legal, engineering, or surveying purposes. It does not represent an on-the-ground survey and represents only the approximate relative location of property boundaries. The City of Fort Worth assumes no responsibility for the accuracy of said

-  Permanent Sewer Easement
-  Temporary Construction Easement
-  Temporary Access Easement

