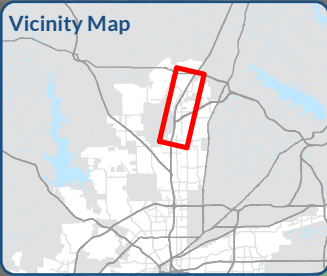
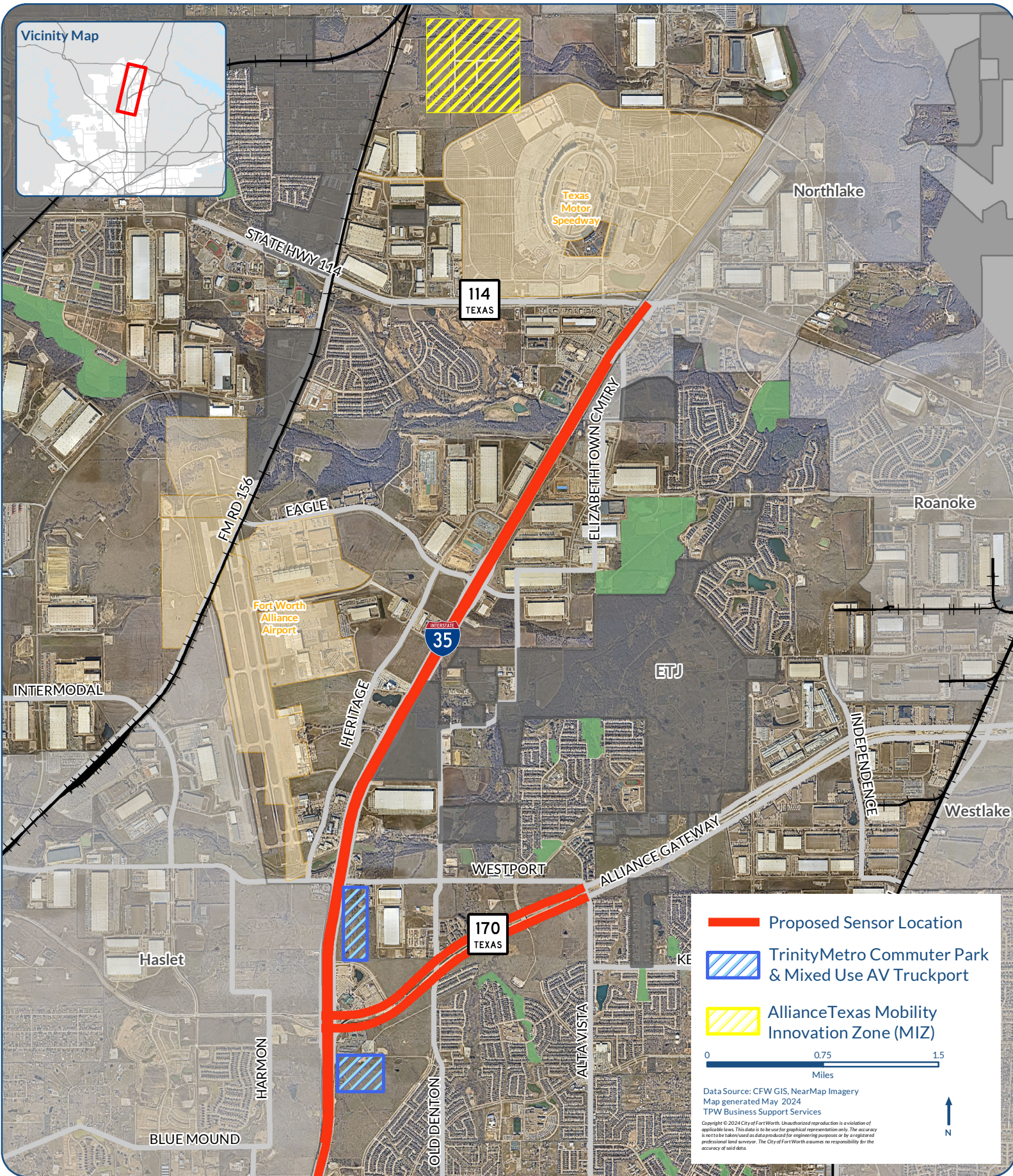





Mayor & Council Map | CD #10 Smart Grant (Approximate Location)



-  Proposed Sensor Location
-  TrinityMetro Commuter Park & Mixed Use AV Truckport
-  AllianceTexas Mobility Innovation Zone (MIZ)

0 0.75 1.5
Miles

Data Source: CFW GIS, NearMap Imagery
Map generated May 2024
TPW Business Support Services

Copyright © 2024 City of Fort Worth. Unauthorized reproduction is a violation of applicable laws. This data is to be used for graphical representation only. The accuracy is not to be taken used as data produced for engineering purposes or by a registered professional land surveyor. The City of Fort Worth assumes no responsibility for the accuracy of said data.

