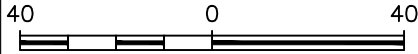


**NORTH**

SCALE: 1" = 40'



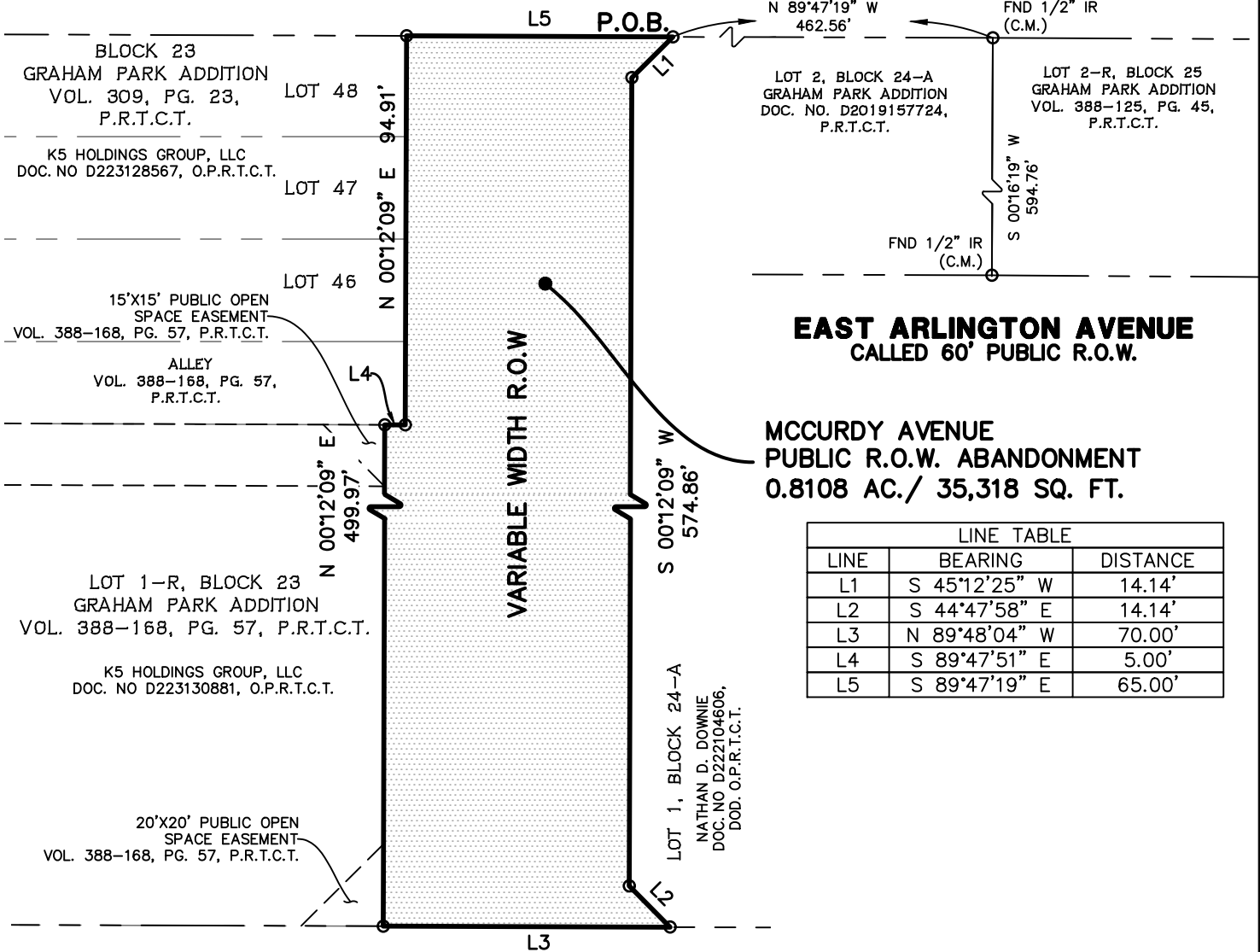
**EXHIBIT A**  
**MCCURDY STREET**  
**PUBLIC R.O.W. ABANDONMENT**

0.8108 AC./ 35,318 SQ. FT. TRACT

SITUATED IN THE JOHN DAVIS SURVEY, ABSTRACT NO. 418  
 CITY OF FORT WORTH, TARRANT COUNTY, TEXAS

**EAST RICHMOND AVENUE**

CALLED 60' PUBLIC R.O.W.  
 VOL. 388-168, PG. 57, P.R.T.C.T.



**EAST ARLINGTON AVENUE**  
 CALLED 60' PUBLIC R.O.W.

**MCCURDY AVENUE**  
 PUBLIC R.O.W. ABANDONMENT  
 0.8108 AC./ 35,318 SQ. FT.

LINE TABLE		
LINE	BEARING	DISTANCE
L1	S 45°12'25" W	14.14'
L2	S 44°47'58" E	14.14'
L3	N 89°48'04" W	70.00'
L4	S 89°47'51" E	5.00'
L5	S 89°47'19" E	65.00'

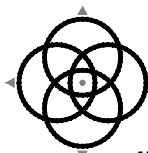
**EAST ARLINGTON AVENUE**  
 CALLED 60' PUBLIC R.O.W.

**PRELIMINARY**

THIS DOCUMENT SHALL NOT BE RECORDED FOR ANY PURPOSE AND SHALL NOT BE USED OR VIEWED OR RELIED UPON AS A FINAL SURVEY DOCUMENT

RPLS No. 5577

FIELD BY:	-	DATE:	11/07/2025
DRAWN BY:	JL	REV:	
CHECKED BY:	JC	REV:	
JOB NO.	D60236	REV:	
SHEET 1 OF 2		REV:	



**WINDROSE**  
 LAND SURVEYING | PLATTING

1760 S. STEMMONS FRWY, STE 180 | LEWISVILLE, TX 75067 | 214.217.2544  
 FIRM REGISTRATION NO. 10108800 | WINDROSESERVICES.COM