

EXHIBIT "A"

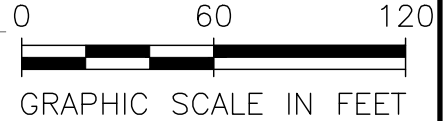
R.O.W. ABANDONMENT

40,634 SQFT OR 0.933 ACRES OF LAND
 JAMES WALLACE SURVEY, ABSTRACT 1605
 W M GRAY SURVEY, ABSTRACT 635
 LOUIS COHEN SURVEY, ABSTRACT 297
 CITY OF FORT WORTH, TARRANT COUNTY TEXAS

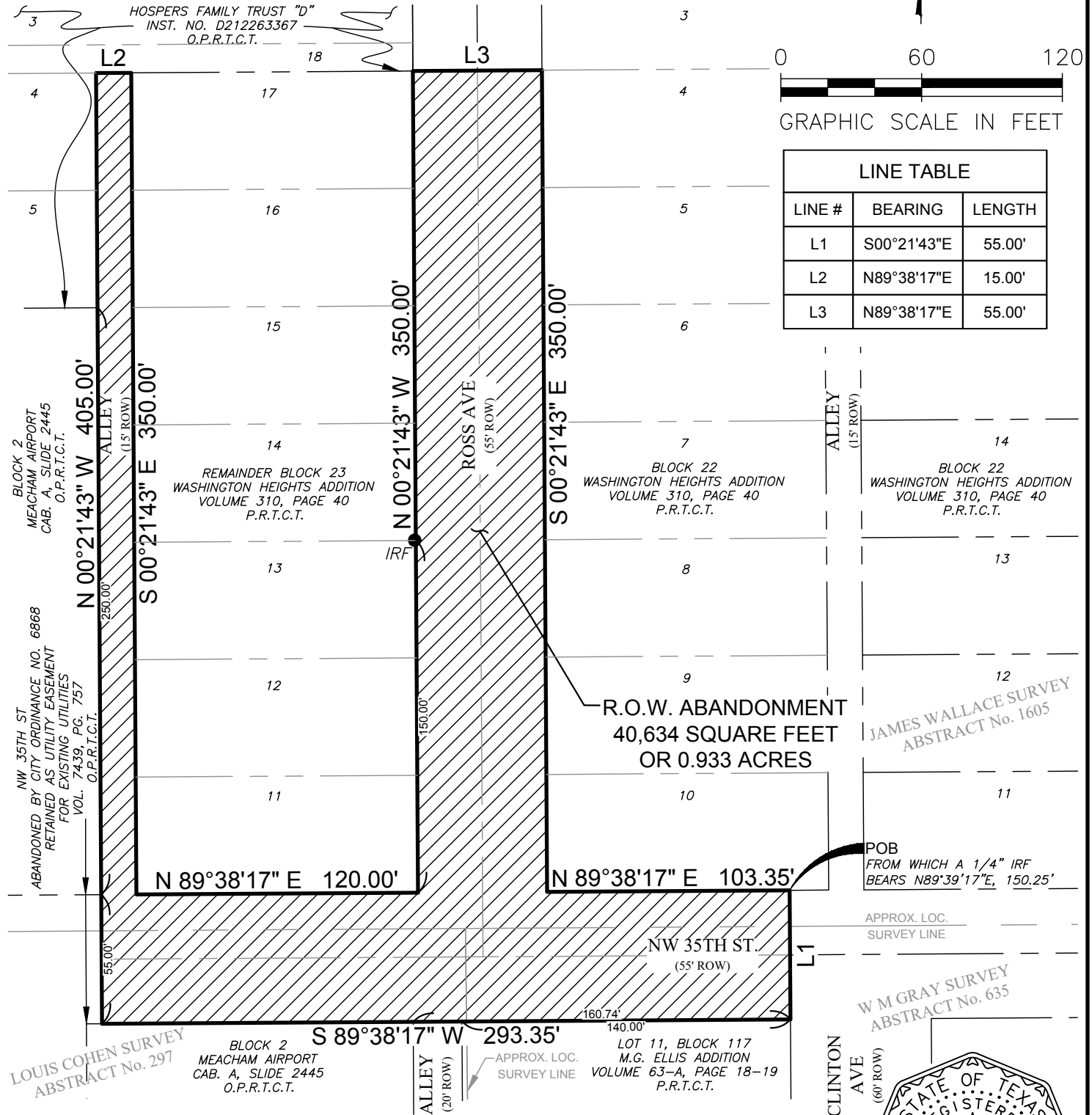
LEGEND:

POB POINT OF BEGINNING
 IRF IRON ROD FOUND

- NOTES:
- LEGAL DESCRIPTION OF EVEN DATE ACCOMPANIES THIS EASEMENT DRAWING.
 - BEARINGS REFERENCED TO THE TEXAS STATE PLANE COORDINATE SYSTEM, NORTH CENTRAL ZONE, NAD '83. ALL DISTANCES ARE GROUND DISTANCES.



LINE TABLE		
LINE #	BEARING	LENGTH
L1	S00°21'43"E	55.00'
L2	N89°38'17"E	15.00'
L3	N89°38'17"E	55.00'

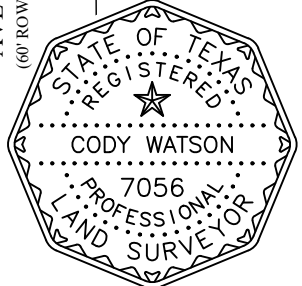


JAMES WALLACE SURVEY
 ABSTRACT No. 1605

POB
 FROM WHICH A 1/4" IRF
 BEARS N89°39'17"E, 150.25'

APPROX. LOC.
 SURVEY LINE

W M GRAY SURVEY
 ABSTRACT No. 635



Cody Watson

CODY WATSON
 R.P.L.S. No. 7056
 DATED: 02-26-2026



SHIELD
ENGINEERING

TBPELS ENGINEERING #F-11039, SURVEYING #10193890

DRAWING: S:\PROJECTS\2015047.01 CDFW SURVEY SERVICES\2015047.12 MEACHAM LEASE SURVEYS\MAINTENANCE FACILITY\01 DRAWINGS\EASEMENTS\2421301 E-1 (ROW ABANDONMENT).DWG SAVED BY: CAIN,BROWN DATE: 02/24/2026

DRAWING: S:\PROJECTS\2015047.01 CDFW SURVEY SERVICES\2015047.12 MEACHAM LEASE SURVEYS\MAINTENANCE FACILITY\01 DRAWINGS\EASEMENTS\2421301 E-1 (ROW ABANDONMENT).DWG SAVED BY: CAIN.BROWN DATE: 11/17/22

EXHIBIT "B"

R.O.W. ABANDONMENT

40,634 SQFT OR 0.933 ACRES OF LAND

JAMES WALLACE SURVEY, ABSTRACT 1605

W M GRAY SURVEY, ABSTRACT NUMBER 635

LOUIS COHEN SURVEY, ABSRACT 297

CITY OF FORT WORTH, TARRANT COUNTY TEXAS

BEING A TRACT OF LAND SITUATED IN THE JAMES WALLACE SURVEY, ABSTRACT NUMBER 1605, W M GRAY SURVEY, ABSTRACT NUMBER 635, AND THE LOUIS COHEN SURVEY, ABSTRACT NUMBER 297, CITY OF FORT WORTH, TARRANT COUNTY, TEXAS, AND BEING A PORTION OF ROSS AVENUE (A 55 FOOT RIGHT-OF-WAY), WASHINGTON HEIGHTS ADDITION, AN ADDITION TO THE CITY OF FORT WORTH, TARRANT COUNTY, TEXAS, AS SHOWN ON THE PLAT THEREOF AND RECORDED IN VOLUME 310, PAGE 40, PLAT RECORDS, TARRANT COUNTY, TEXAS (P.R.T.C.T.) AND BEING A PORTION OF NW 35TH STREET (A 55 FOOT RIGHT-OF-WAY), OF SAID WASHINGTON HEIGHTS ADDITION AND BEING ALL OF AN ALLEY (A 15 FOOT RIGHT-OF-WAY), BLOCK 23, OF SAID WASHINGTON HEIGHTS ADDITION AND BEING MORE PARTICULARLY DESCRIBED BY METES AND BOUNDS AS FOLLOWS:

BEGINNING AT A POINT IN THE COMMON NORTH RIGHT-OF-WAY LINE OF NW 35TH STREET (A 55 FOOT RIGHT-OF-WAY) OF SAID WASHINGTON HEIGHTS ADDITION AND THE SOUTH LINE OF LOT 10, BLOCK 22, OF SAID WASHINGTON HEIGHTS, FROM WHICH A 1/4 INCH IRON ROD FOUND BEARS NORTH 89°39'17" EAST, A DISTANCE OF 150.25 FEET;

THENCE SOUTH 00°21'43" EAST, OVER AND ACROSS SAID NW 35TH STREET, A DISTANCE OF 55.00 FEET TO A POINT BEING IN THE COMMON SOUTH RIGHT-OF-WAY LINE OF SAID NW 35TH STREET AND THE NORTH LINE OF LOT 11, BLOCK 117, M.G. ELLIS ADDITION, AN ADDITION TO THE CITY OF FORT WORTH, TARRANT COUNTY, TEXAS, AS SHOWN ON THE PLAT THEREOF AND RECORDED IN VOLUME 63-A, PAGE 18-19, PLAT RECORDS, TARRANT COUNTY, TEXAS (P.R.T.C.T.);

THENCE SOUTH 89°38'17" WEST, WITH SAID COMMON SOUTH AND NORTH RIGHT-OF-WAY LINE, PASSING AT A DISTANCE OF 140.00 FEET, THE COMMON INTERSECTION OF THE SOUTH RIGHT-OF-WAY LINE OF SAID NW 35TH STREET AND THE EAST RIGHT-OF-WAY OF AN ALLEY (A 20 FOOT RIGHT-OF-WAY), OF SAID BLOCK 117, AND THE NORTHWEST CORNER OF SAID LOT 11, BLOCK 117, PASSING AT A DISTANCE OF 160.74 FEET, THE COMMON INTERSECTION OF THE SOUTH RIGHT-OF-WAY LINE OF SAID NW 35TH STREET AND THE WEST RIGHT-OF-WAY OF SAID ALLEY, BLOCK 117, AND BEING AN ELL CORNER OF BLOCK 2, MEACHAM AIRPORT, AN ADDITION TO THE CITY OF FORT WORTH, TARRANT COUNTY, TEXAS, AS SHOWN ON THE PLAT THEREOF AND RECORDED IN CABINET A, SLIDE 2445, O.P.R.T.C.T., CONTINUING A TOTAL DISTANCE OF 293.35 FEET TO A POINT BEING THE COMMON SOUTHWEST CORNER OF SAID NW 35TH STREET AND A REENTRANT CORNER OF SAID BLOCK 2;

THENCE NORTH 00°21'43" WEST, WITH THE COMMON WEST RIGHT-OF-WAY LINE OF SAID NW 35TH STREET AND THE EAST LINE OF SAID BLOCK 2, PASSING AT A DISTANCE OF 55.00 FEET, THE INTERSECTION OF THE NORTH RIGHT-OF-WAY LINE OF SAID NW 35TH STREET AND THE WEST RIGHT-OF-WAY OF AN AFOREMENTIONED ALLEY, BLOCK 23, PASSING AT A DISTANCE OF 305.00 FEET, A COMMON ELL CORNER OF SAID BLOCK 2, AND THE SOUTHEAST CORNER OF LOT 5, OF SAID BLOCK 23, CONTINUING A TOTAL DISTANCE OF 405.00 FEET TO A POINT BEING THE COMMON NORTHWEST CORNER OF SAID ALLEY, BLOCK 23 AND THE NORTHEAST CORNER OF LOT 4, OF SAID BLOCK 23, AND BEING IN THE SOUTH LINE OF LOT 18 OF SAID BLOCK 23 ;

THENCE NORTH 89°38'17" EAST, WITH THE COMMON NORTH RIGHT-OF-WAY LINE OF SAID ALLEY OF SAID BLOCK 23 AND THE SOUTH LINE OF SAID LOT A DISTANCE OF 15.00 FEET TO THE COMMON NORTHWEST CORNER OF SAID ALLEY, BLOCK 23 AND THE NORTHWEST CORNER OF SAID LOT 17;

THENCE SOUTH 00°21'43" EAST, WITH THE COMMON EAST RIGHT-OF-WAY LINE OF SAID ALLEY, BLOCK 23 AND THE WEST LINE OF SAID BLOCK 23, A DISTANCE OF 350.00 FEET TO A POINT BEING THE INTERSECTION OF THE EAST RIGHT-OF-WAY LINE OF SAID ALLEY AND THE NORTH RIGHT-OF-WAY LINE OF AFOREMENTIONED NW 35TH STREET AND BEING THE SOUTHWEST CORNER OF LOT 11, OF SAID BLOCK 23;

THENCE NORTH 89°38'17" EAST, WITH THE COMMON NORTH RIGHT-OF-WAY LINE OF SAID NW 35TH STREET AND THE SOUTH LINE OF SAID BLOCK 23, A DISTANCE OF 120.00 FEET TO A POINT BEING THE COMMON INTERSECTION OF THE NORTH RIGHT-OF-WAY LINE OF SAID NW 35TH STREET AND THE WEST RIGHT-OF-WAY LINE OF AFOREMENTIONED ROSS AVENUE, AND THE SOUTHEAST CORNER OF SAID LOT 11;

THENCE NORTH 00°21'43" WEST, WITH THE COMMON WEST RIGHT-OF-WAY LINE OF SAID ROSS AVENUE AND THE EAST LINE OF SAID BLOCK 23, PASSING AT A DISTANCE OF 150.00 FEET, A IRON ROD FOUND FOR THE COMMON NORTHEAST CORNER OF LOT 13, OF SAID BLOCK 23 AND THE SOUTHEAST CORNER OF LOT 14, OF SAID BLOCK 23, CONTINUING A TOTAL DISTANCE OF 350.00 FEET TO A POINT BEING THE COMMON NORTHEAST CORNER OF LOT 17, OF SAID BLOCK 23 AND THE SOUTHEAST CORNER OF LOT 18, OF SAID BLOCK 23;

THENCE NORTH 89°38'17" EAST, OVER AND ACROSS SAID ROSS AVENUE, A DISTANCE OF 55.00 FEET TO A POINT IN THE EAST RIGHT-OF-WAY LINE OF SAID ROSS AVENUE AND BEING THE COMMON NORTHWEST CORNER OF LOT 14 OF AFOREMENTIONED BLOCK 22 AND THE SOUTHWEST CORNER OF LOT 3, OF SAID BLOCK 22;

THENCE SOUTH 00°21'43" EAST, WITH THE COMMON EAST RIGHT-OF-WAY LINE OF SAID ROSS AVENUE AND THE WEST LINE OF SAID BLOCK 22, A DISTANCE OF 350.00 FEET TO A POINT BEING THE COMMON INTERSECTION OF THE EAST RIGHT-OF-WAY LINE OF SAID ROSS AVENUE AND THE NORTH RIGHT-OF-WAY LINE OF AFOREMENTIONED NW 35TH STREET AND THE SOUTHWEST CORNER OF AFOREMENTIONED LOT 10, BLOCK 22;

THENCE NORTH 89°38'17" EAST, WITH THE COMMON NORTH LINE OF SAID NW 35TH STREET, AND THE SOUTH LINE OF SAID LOT 10, BLOCK 22, A DISTANCE OF 103.35 FEET TO THE POINT OF BEGINNING AND CONTAINING 40,634 SQUARE FEET OR 0.933 ACRES OF LAND, MORE OR LESS.

NOTES:

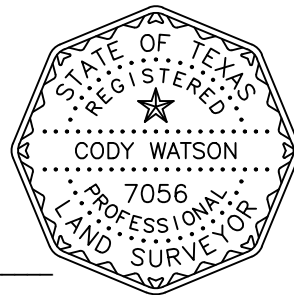
1. EASEMENT DRAWING OF EVEN DATE ACCOMPANIES THIS LEGAL DESCRIPTION.
2. BEARINGS REFERENCED TO THE TEXAS STATE PLANE COORDINATE SYSTEM, NORTH CENTRAL ZONE, NAD '83. ALL DISTANCES ARE GROUND DISTANCES.



SHIELD ENGINEERING

TBPELS ENGINEERING #F-11039, SURVEYING #10193890

CODY WATSON
R.P.L.S. No. 7056
DATED: 02-26-2026



LEGEND:

POB POINT OF BEGINNING
 IRF IRON ROD FOUND

- NOTES:
 1. LEGAL DESCRIPTION OF EVEN DATE ACCOMPANIES THIS EASEMENT DRAWING.
 2. BEARINGS REFERENCED TO THE TEXAS STATE PLANE COORDINATE SYSTEM, NORTH CENTRAL ZONE, NAD '83. ALL DISTANCES ARE GROUND DISTANCES.

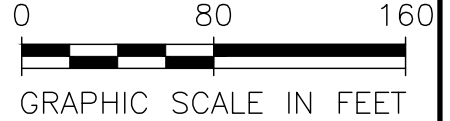
EXHIBIT "A"

R.O.W. ABANDONMENT

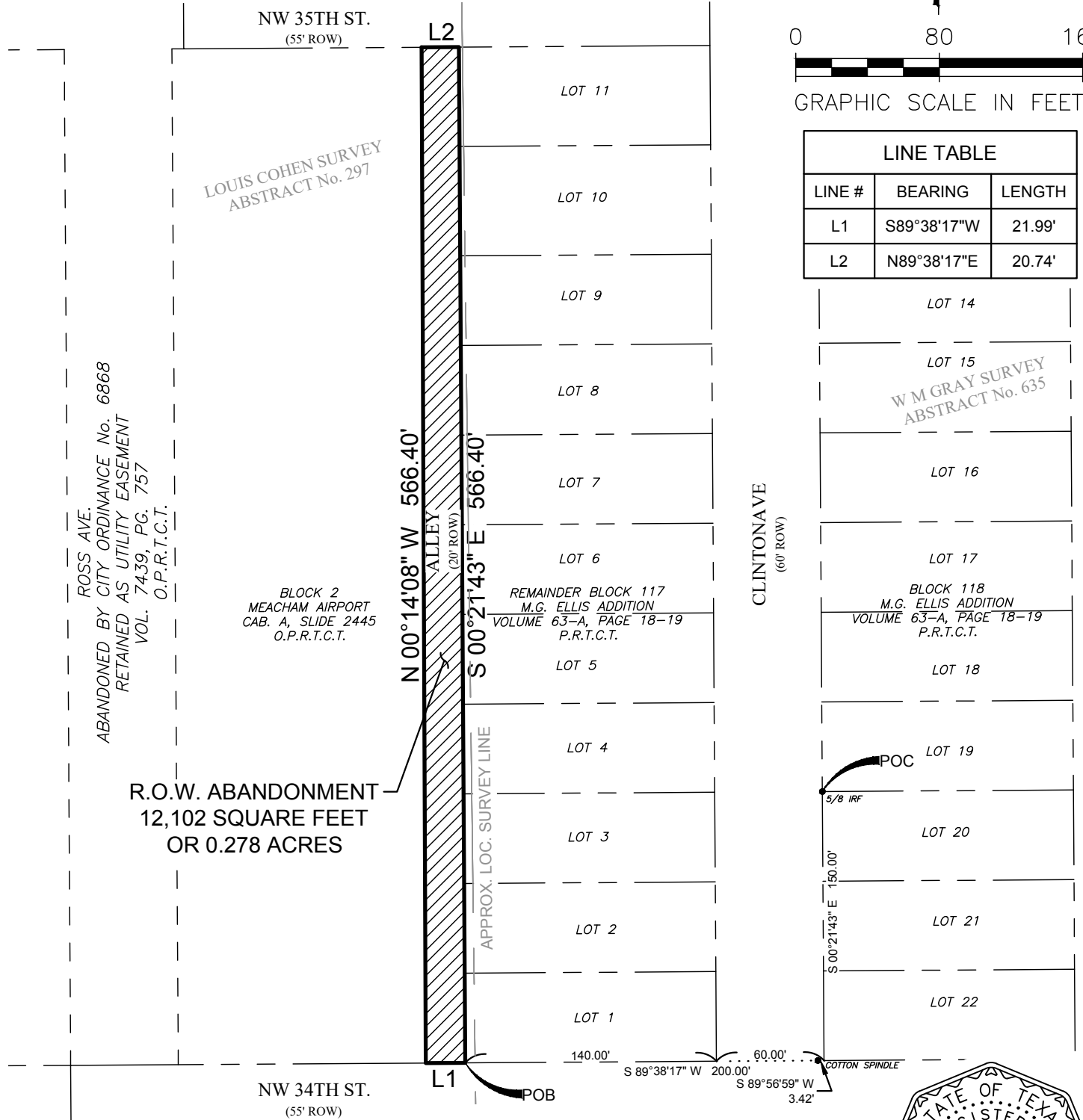
12,102 SQFT OR 0.278 ACRES OF LAND

LOUIS COHEN, ABSTRACT 297

CITY OF FORT WORTH, TARRANT COUNTY TEXAS



LINE TABLE		
LINE #	BEARING	LENGTH
L1	S89°38'17"W	21.99'
L2	N89°38'17"E	20.74'



DRAWING: S:\PROJECTS\2015047.01 COFW SURVEY SERVICES\2015047.12 MEACHAM LEASE SURVEYS\MAINTENANCE FACILITY\01 DRAWINGS\EASEMENTS\2421301 E-2 (ROW ABANDONMENT).DWG SAVED BY: CAIN,BROWN DATE: 02/24/2026

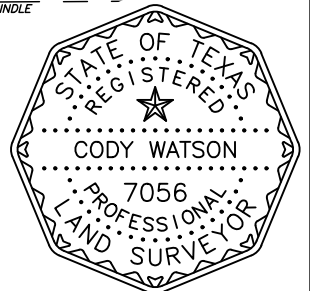


SHIELD
ENGINEERING

TBPELS ENGINEERING #F-11039, SURVEYING #10193890

Cody Watson

CODY WATSON
 R.P.L.S. No. 7056
 DATED: 02-26-2026



DRAWING: S:\PROJECTS\2015047.01 COFW SURVEY SERVICES\2015047.12 MEACHAM LEASE SURVEYS\MAINTENANCE FACILITY\01 DRAWINGS\EASEMENTS\2421301 E-2 (ROW ABANDONMENT).DWG SAVED BY: CAIN.BROWN DATE: 11/17/22

EXHIBIT "B"

R.O.W. ABANDONMENT

12,102 SQFT OR 0.278 ACRES OF LAND

LOUIS COHEN SURVEY, ABSTRACT 297

CITY OF FORT WORTH, TARRANT COUNTY TEXAS

BEING A TRACT OF LAND SITUATED IN THE LOUIS COHEN SURVEY, ABSTRACT NUMBER 297, CITY OF FORT WORTH, TARRANT COUNTY, TEXAS, AND BEING A ALL OF AN ALLEY WAY (A 20 FOOT RIGHT-OF-WAY), OF BLOCK 117, M.G. ELLIS ADDITION, AN ADDITION TO THE CITY OF FORT WORTH, TARRANT COUNTY, TEXAS, AS SHOWN ON THE PLAT THEREOF AND RECORDED IN VOLUME 63-A, PAGE 18-19, PLAT RECORDS, TARRANT COUNTY, TEXAS (P.R.T.C.T.) AND BEING MORE PARTICULARLY DESCRIBED BY METES AND BOUNDS AS FOLLOWS:

COMMENCING AT A 5/8 INCH IRON ROD FOUND BEING THE EAST RIGHT-OF-WAY LINE OF CLINTON AVENUE (A 60 FOOT RIGHT-OF-WAY) OF SAID M.G. ELLIS ADDITION, AND BEING THE COMMON SOUTHWEST CORNER OF LOT 19, BLOCK 118, OF SAID M.G. ELLIS ADDITION, AND THE NORTHWEST CORNER OF LOT 20, OF SAID BLOCK 118;

THENCE SOUTH 00°21'43" EAST, WITH THE COMMON EAST RIGHT-OF-WAY LINE OF SAID CLINTON AVENUE AND THE WEST LINE OF SAID BLOCK 118, A DISTANCE OF 150.00 FEET TO A POINT BEING THE INTERSECTION OF THE EAST RIGHT-OF-WAY LINE OF SAID CLINTON AVE AND THE NORTH RIGHT-OF-WAY LINE OF NW 34TH STREET (A 55 FOOT RIGHT-OF-WAY) OF SAID M.G. ELLIS ADDITION AND THE SOUTHWEST CORNER OF LOT 22, OF SAID BLOCK 118, FROM WHICH A COTTON SPINDLE FOUND BEARS SOUTH 89°56'59" WEST, A DISTANCE OF 3.42 FEET;

THENCE SOUTH 89°38'17" WEST, WITH THE COMMON NORTH RIGHT-OF-WAY OF SAID NW 34TH STREET AND THE SOUTH RIGHT-OF-WAY LINE OF SAID CLINTON AVENUE, PASSING AT A DISTANCE OF 60.00 FEET, THE INTERSECTION OF THE NORTH RIGHT-OF-WAY OF SAID NW 34TH STREET AND THE WEST RIGHT-OF-WAY LINE OF SAID CLINTON AVENUE AND THE SOUTHEAST CORNER OF LOT 1, OF AFOREMENTIONED BLOCK 117, CONTINUING A TOTAL DISTANCE OF 200.00 FEET TO THE POINT OF BEGINNING BEING THE INTERSECTION OF THE EAST RIGHT-OF-WAY LINE OF AFOREMENTIONED ALLEY, OF SAID BLOCK 117 AND THE NORTH RIGHT-OF-WAY OF SAID NW 34TH STREET AND THE SOUTHWEST CORNER OF SAID LOT 1;

THENCE SOUTH 89°38'17" WEST, WITH THE COMMON SOUTH RIGHT-OF-WAY LINE OF SAID ALLEY AND THE NORTH RIGHT-OF-WAY LINE OF SAID NW 34TH STREET, A DISTANCE OF 21.99 FEET TO A POINT BEING THE INTERSECTION OF THE WEST RIGHT-OF-WAY LINE OF SAID ALLEY AND NORTH RIGHT-OF-WAY OF SAID NW 34TH STREET AND AN ELL CORNER OF BLOCK 2, MEACHAM AIRPORT, AN ADDITION TO THE CITY OF FORT WORTH, TARRANT COUNTY, TEXAS, AS SHOWN ON THE PLAT THEREOF AND RECORDED IN CABINET A, SLIDE 2445, PLAT RECORDS, TARRANT COUNTY, TEXAS (P.R.T.C.T.);

THENCE NORTH 00°14'08" WEST, WITH THE COMMON WEST RIGHT-OF-WAY LINE OF SAID ALLEY AND THE EAST LINE OF SAID BLOCK 2, A DISTANCE OF 566.40 FEET TO A POINT BEING THE WEST INTERSECTION OF SAID ALLEY, SOUTH RIGHT-OF-WAY OF NW 35TH STREET, WASHINGTON HEIGHTS ADDITION, AN ADDITION TO THE CITY OF FORT WORTH, TARRANT COUNTY, TEXAS, AS SHOWN ON THE PLAT THEREOF AND RECORDED IN VOLUME 310, PAGE 40, P.R.T.C.T. AND AN ELL CORNER OF SAID BLOCK 2;

THENCE NORTH 89°38'17" EAST, WITH THE COMMON NORTH RIGHT-OF-WAY LINE OF SAID ALLEY AND THE SOUTH RIGHT-OF-WAY LINE OF SAID NW 35TH STREET, A DISTANCE OF 20.74 FEET TO A POINT BEING THE INTERSECTION OF THE EAST RIGHT-OF-WAY LINE OF SAID ALLEY AND THE SOUTH RIGHT-OF-WAY LINE OF SAID NW 35TH ST AND THE NORTHWEST CORNER OF LOT 11, OF AFOREMENTIONED BLOCK 117;

THENCE SOUTH 00°21'43" EAST, WITH THE COMMON EAST RIGHT-OF-WAY LINE OF SAID ALLEY AND THE WEST LINE OF BLOCK 117, A DISTANCE OF 566.40 FEET TO THE POINT OF BEGINNING AND CONTAINING 12,102 SQUARE FEET OR 0.278 ACRES OF LAND, MORE OR LESS.

NOTES:

1. EASEMENT DRAWING OF EVEN DATE ACCOMPANIES THIS LEGAL DESCRIPTION.
2. BEARINGS REFERENCED TO THE TEXAS STATE PLANE COORDINATE SYSTEM, NORTH CENTRAL ZONE, NAD '83. ALL DISTANCES ARE GROUND DISTANCES.



SHIELD
ENGINEERING

TBPELS ENGINEERING #F-11039, SURVEYING #10193890

CODY WATSON
R.P.L.S. No. 7056
DATED: 02-26-2026

