

**Description of a
Temporary Construction Easement**

BEING that tract of land situated in the J. Conwill Survey, Abstract Number 343, City of Fort Worth, Tarrant County, Texas and being a portion of that tract of land described by deed to International Union of Operating Engineers, Local 178, AFL-CIO, recorded in Instrument Number D202040614, County Records, Tarrant County, Texas and being more particularly described by metes and bounds as follows:

BEGINNING in the east line of said International Union of Operating Engineers tract and the west line of Bowman-Roberts Road (a variable width right-of-way), from which a 1/2 inch iron rod found at the southeast corner of said International Union of Operating Engineers tract bears S 00°24'59"W, 846.54 feet and a ½ inch iron rod found at the northwest corner of Lot 1X, Block 2, Western Ridge, an addition to the City of Fort Worth, Tarrant County, Texas, according to the plat recorded in Instrument Number D220038399, said County Records, bears N 05°47'11"E, 508.37 feet;

THENCE N 89°34'05"W, 11.06 feet, departing said west line;

THENCE N 00°25'54"E, 18.82 feet;

THENCE N 10°54'39"E, 60.84 feet, to said west line;

THENCE S 00°25'58"W, 78.65 feet, along said west line, to the **Point of Beginning** and containing 539 square feet or 0.012 acres of land more or less.

"Integral parts of this document"

1. Description
2. Exhibit

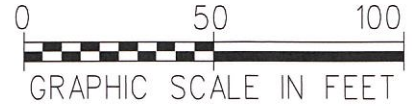
TBPETS - LS FIRM REG. NO. 10177700

Basis of Bearing is the Texas Coordinate System
North Central Zone 4202, NAD 83

IRF = Iron Rod Found

"Integral parts of this document"

- 1. Description
- 2. Exhibit



*J. CONWILL SURVEY
ABST. # 343*

L1 N 89° 34'05"W 11.06'
L2 S 00° 25'58"W 78.65'

*International Order of Operating Engineers
Local 178 AFL-CIO
Inst.* D202040614
C.R.T.C.T.*

Point of Beginning

**Cromwell Marine
Creek Road**

*(Variable width right-of-way)
V.5196, P.389
C.R.T.C.T.*

N10° 54'39"E
60.84'
0.012 Acres

N00° 25'54"E
18.82'

N05° 47'11"E
508.37'

S00° 24'59"W
846.54'

*International Order of Operating Engineers
Local 178 AFL-CIO
Inst.* D202040614
C.R.T.C.T.*

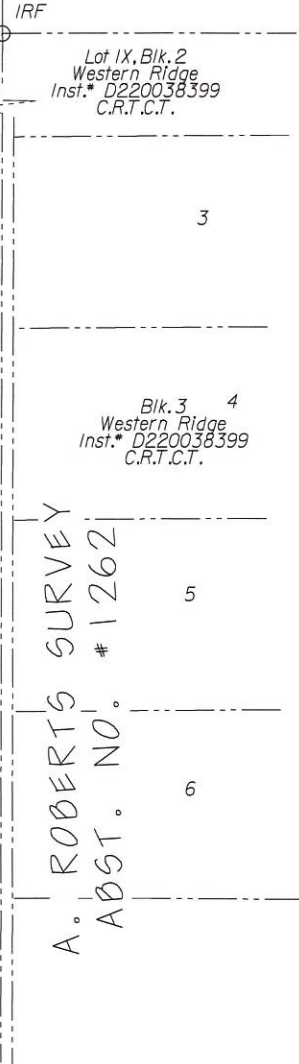


*Todd A. Bridges
12-1522*

Bowman-Roberts Road

Approx. Survey Line

A variable width Right-of-Way



Copyright © 2022 Peloton Land Solutions, Inc.

Exhibit of a

Temporary Construction Easement

Situated in the J. Conwill Survey, Abstract Number 343
City of Fort Worth, Tarrant County, Texas

Parcel TCE8

PELTON
LAND SOLUTIONS

9800 HILLWOOD PARKWAY, SUITE 250
FORT WORTH, TEXAS 76177 PH.# 817-562-3350

JOB # BMC17001

DRAWN BY: SS

CHECKED BY:

DATE: 01/21/2022

PAGE # 2OF2