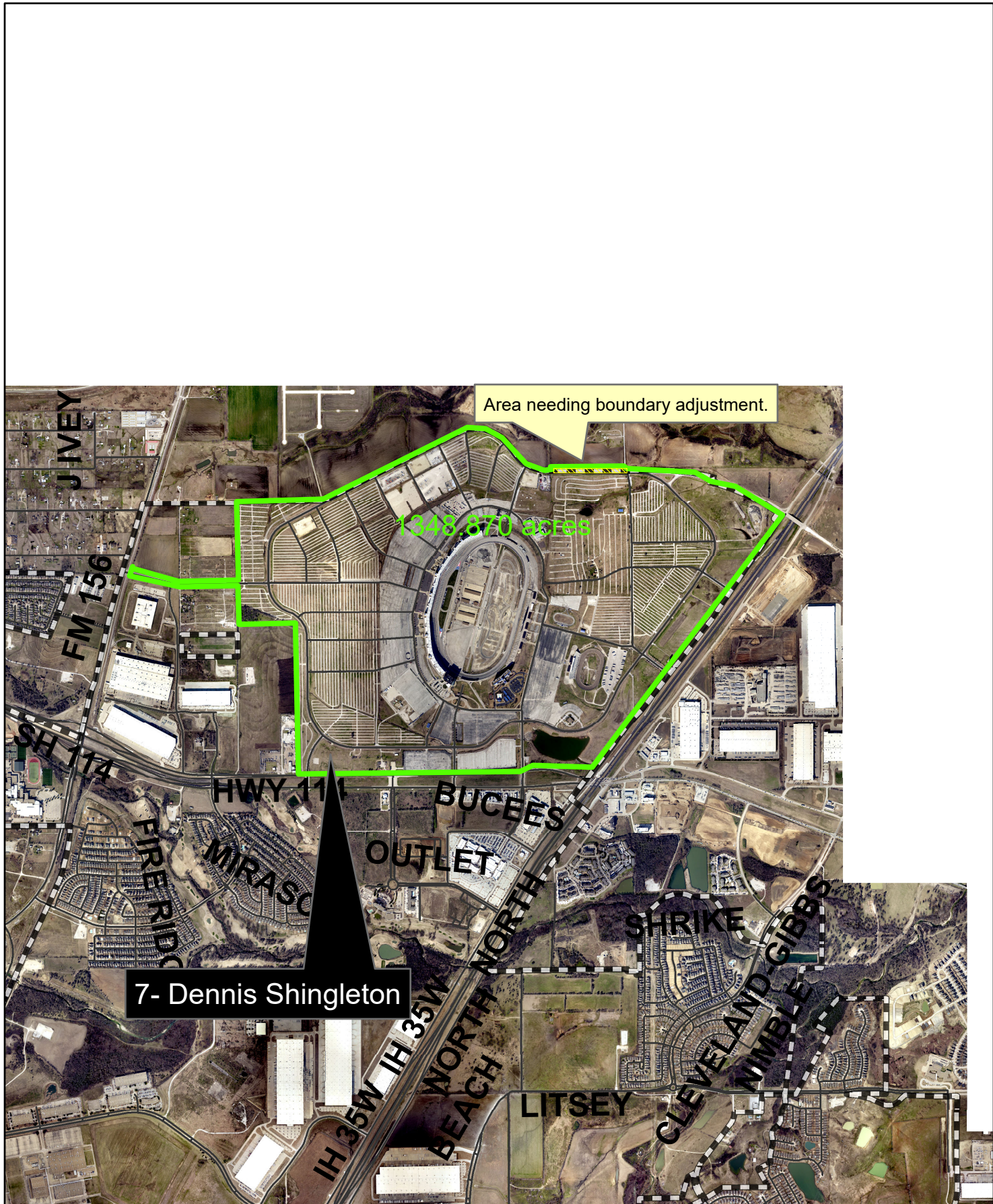


M & C MAP TEXAS MOTOR SPEEDWAY LOT

just west of intersection IH-35W and north of St Hwy 114






7- Dennis Shingleton

Area needing boundary adjustment.

1348,870 sq ft



Copyright 2020 City of Fort Worth. Unauthorized reproduction is a violation of applicable laws. This product is for informational purposes and may not have been prepared for or be suitable for legal, engineering, or surveying purposes. It does not represent an on-the-ground survey and represents only the approximate relative location of property boundaries. The City of Fort Worth assumes no responsibility for the accuracy of said data.

-  City Limits
-  Replat Boundaries
-  Area needing boundary adjustment

